



REV A January 2011

Oscilent Controlled Document

Ordering Code / Part Number	Product Description
813-SL75.0M-20G	75.0 MHz IF SAW Filter 20.6MHz Bandwidth

### Specification Contents

- o Mechanical Dimensions
- o Test Circuit
- o Maximum Ratings
- o Electrical Specification
- o Frequency Response

### Notes

- o Electrostatic Sensitive Device (ESD) 
- o Avoid excessive ultrasonic exposure
- o Solderability compatible with JEDEC J-STD-020C Pb-free process, 260°C peak reflow temperature
- o This product complies with EU directive 2002/95/EC (RoHS compliance)



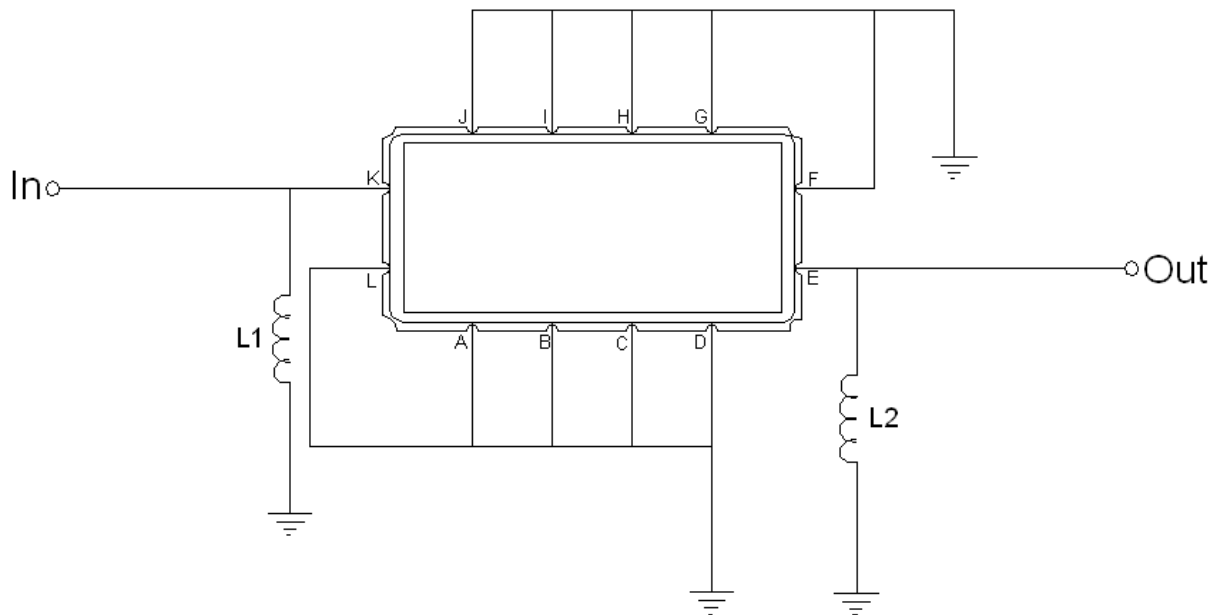


## Mechanical Dimensions (mm)



Pin Description	
A, B, C, D, F, G, H, I, J, L	Ground
K	Input
E	Output

## Test Circuit



Test Fixture & Values	
Input	L1 = 82 nH
Output	L2 = 56 nH
Source/Load Impedance	50 Ω



## Maximum Ratings

Parameters Description	Unit	Minimum	Typical	Maximum
Operating Temperature Range	°C	-30	-	+80
Storage Temperature Range	°C	-40	-	+85
Maximum DC Voltage	V	-	-	10
Maximum Input Power	dBm	-	-	10
Source Impedance (single ended) <sup>(1)</sup>	Ω	-	50	-
Load Impedance (single ended) <sup>(1)</sup>	Ω	-	50	-

Notes: With Matching Network (Ref. Testing Environment Circuit as shown above).

Those impedances could be modified with different impedance values and/or structures, if necessary.

## Electrical Specification

Parameters Description	Unit	Minimum	Typical	Maximum
Center Frequency (Fo)	MHz	-	75.00	-
Insertion Loss at Fo	dB	-	13.5	15.0
Group Delay Variation at Fo±9.75MHz	nsec	-	35	50
Absolute Delay at Fo	usec	-	0.95	-
Passband Ripple Variation at Fo±9.75MHz	dB	-	0.3	1.0
Bandwidth at -1dB	MHz	20	20.6	-
Bandwidth at -3dB	MHz	21	21.4	-
Bandwidth at -40dB	MHz	-	25.1	25.5
Ultimate Rejection	dB	42	48	-



### Frequency Response

