



Part Number	Package	Application	Last Modified
803-RF421.25M-A	3.8 x 3.8 SMD	CDMA450	Mar. 2 2007

TYPE :  
421.25 MHz RF-Rx SAW Filter



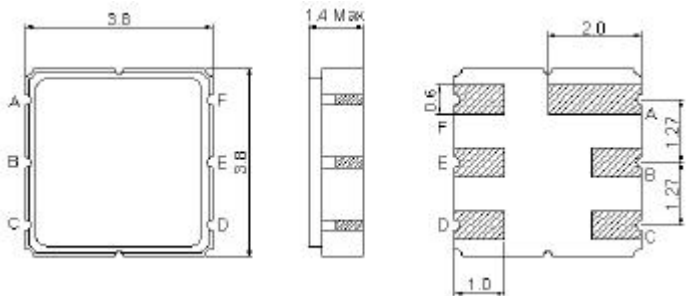
PART NUMBER :  
**803-RF421.25M-A**

**OPERATING CONDITIONS / ELECTRICAL CHARACTERISTICS**

PARAMETERS	Condition	Minimum	Typical	Maximum	Units
Center Frequency	-	-	421.25	-	MHz
Insertion Loss	420.0 ~ 422.5 MHz	-	3.5	4.8	dB
Source Impedance (single ended)	-	-	50	-	ohm
Load Impedance (double ended)	-	-	50	-	ohm
Operating Temperature	-	-30	-	+80	°C
VSWR	420 ~ 422.5 MHz	-	2.1	2.5	-
Max Input Power	-	-	-	30	dBm
Stopband Attenuation	0.3~400.0 MHz	45.0	50.0	-	dB
	410.0~412.5 MHz	35.0	50.0	-	
	485.0~1200.0 MHz	35.0	43.0	-	
	1200.0~2000.0 MHz	30.0	40.0	-	

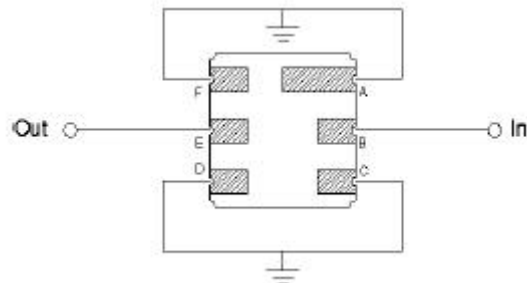
\* No Matching Network

**PACKAGE DRAWING**

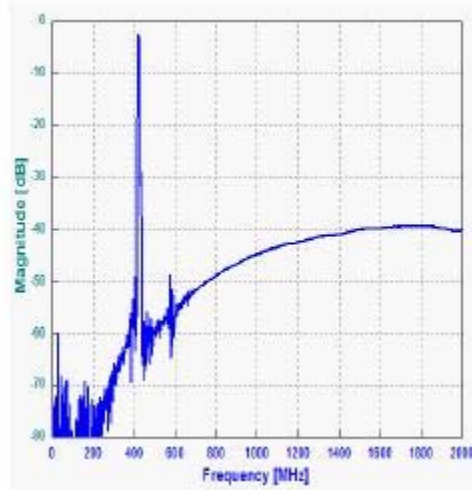
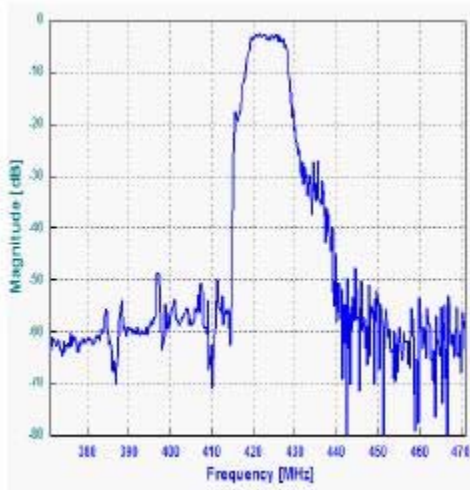


Pin Layout	
A	Ground
B	Input
C	Ground
D	Ground
E	Output
F	Ground

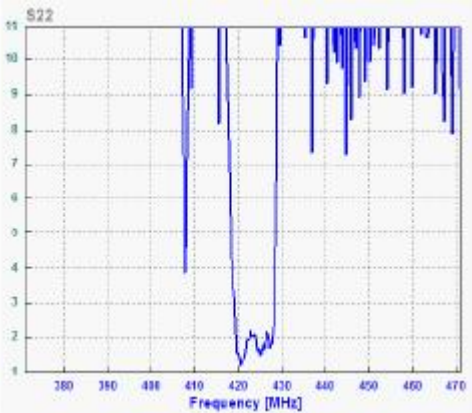
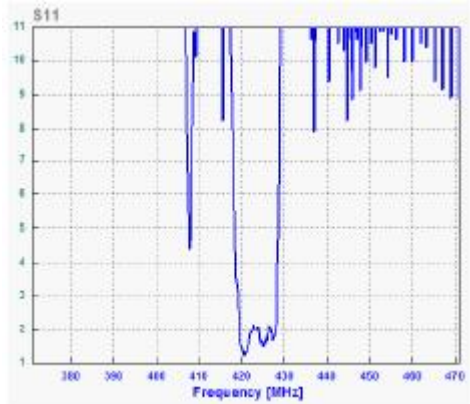
**TESTING ENVIRONMENT**



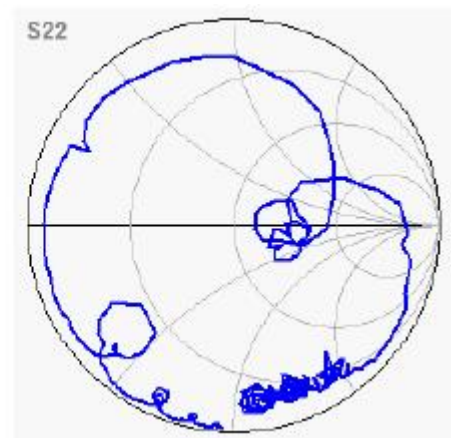
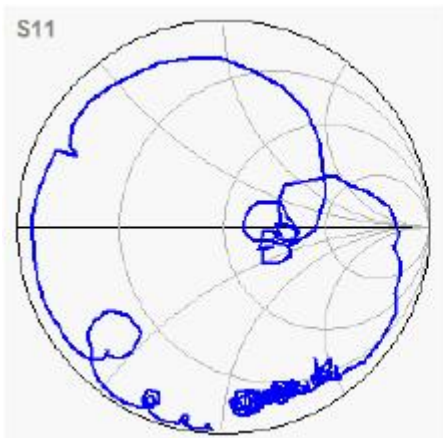
## FREQUENCY RESPONSE



## VSWR (S11, S22)



## SMITH CHART



**Oscilent Corporation** - CALL **949.252.0522**  
18195 East McDermott Street . Building D . Irvine . CA 92614 . USA  
Fax: 949.252.0599 . E-Mail: [Sales@Oscilent.com](mailto:Sales@Oscilent.com)

**Part No.:** 803-RF421.25M-A