



Oscilent Corporation

PRODUCT SPECIFICATION

REV A January 2010

Oscilent Controlled Document

Ordering Code / Part Number	Product Description
803-RF243.95M-B	PHS, IF SAW Filter

Specification Contents

- o Mechanical Dimensions
- o Test Circuit
- o Maximum Ratings
- o Electrical Specification
- o Frequency Performance

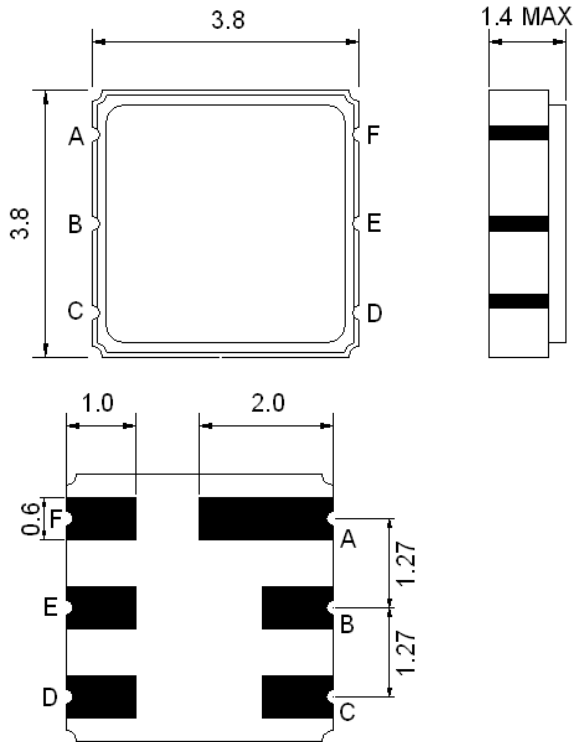
Notes

- o Electrostatic Sensitive Device (ESD) 
- o Avoid excessive ultrasonic exposure
- o Solderability compatible with JEDEC J-STD-020C Pb-free process, 260°C peak reflow temperature
- o This product complies with EU directive 2002/95/EC (RoHS compliance)



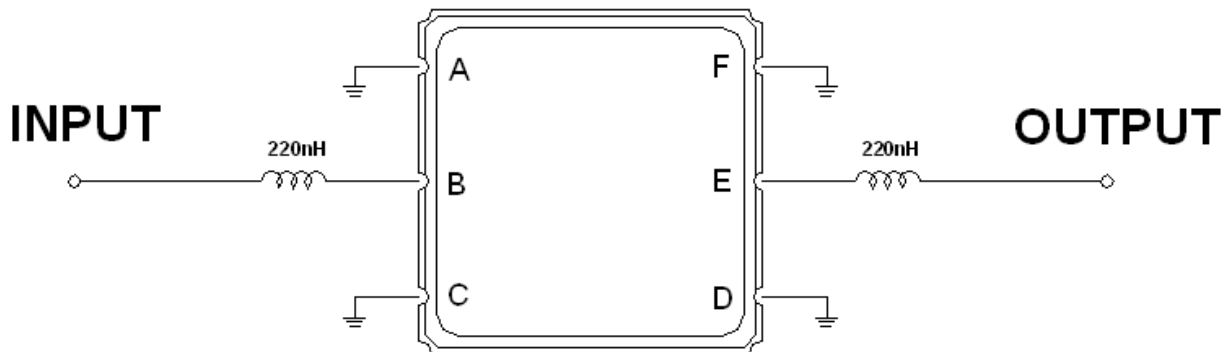


Mechanical Dimensions (mm)



Pin Description	
A, C, D, F	Ground
B	In
E	Out

Test Circuit



Source and Load Impedance: 50 Ω



Maximum Ratings

Parameters Description	Unit	Minimum	Typical	Maximum
Operating Temperature Range	°C	-10	-	+60
Storage Temperature Range	°C	-40	-	+85
Maximum DC Voltage	V	-	-	0
Maximum Input Power	dBm	-	-	10
Source Impedance (single ended) ⁽¹⁾	Ω	-	50	-
Load Impedance (single ended) ⁽¹⁾	Ω	-	50	-

Notes: With matching network (Ref. Testing Environment Circuit as shown above)

Electrical Specification

Parameters Description	Unit	Minimum	Typical	Maximum
Center Frequency (Fo)	MHz	-	243.95	-
Insertion Loss at Fo	dB	-	3.2	4.0
Amplitude Ripple within Fo±100 KHz	dB	-	0.9	1.5
Group Delay Ripple within Fo±100 KHz	μsec	-	-	1.2
Attenuation:				
Fo – 23 MHz	dB	55	61	-
Fo - 1.2 MHz	dB	40	54	-
Fo – 600 KHz	dB	30	37	-
Fo + 600 KHz	dB	30	40	-
Fo + 1.2 MHz	dB	40	46	-
Fo + 23 MHz	dB	55	57	-



Frequency Performance

