



# PRODUCT SPECIFICATION

REV A January 2010


Oscilent Controlled Document

Ordering Code / Part Number	Product Description
803-RF243.95M-A	PHS, IF SAW Filter

## Specification Contents

- o Mechanical Dimensions
- o Test Circuit
- o Maximum Ratings
- o Electrical Specification
- o Frequency Performance
- o Smith Chart

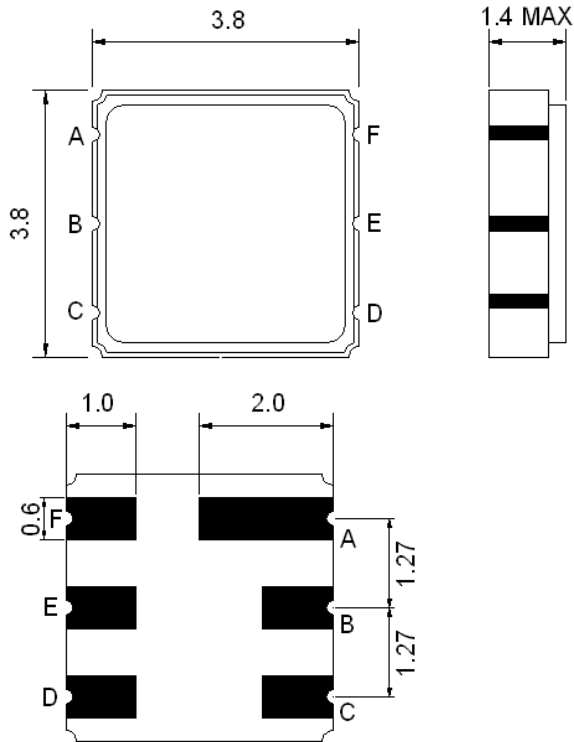
## Notes

- o Electrostatic Sensitive Device (ESD) 
- o Avoid excessive ultrasonic exposure
- o Solderability compatible with JEDEC J-STD-020C Pb-free process, 260°C peak reflow temperature
- o This product complies with EU directive 2002/95/EC (RoHS compliance)



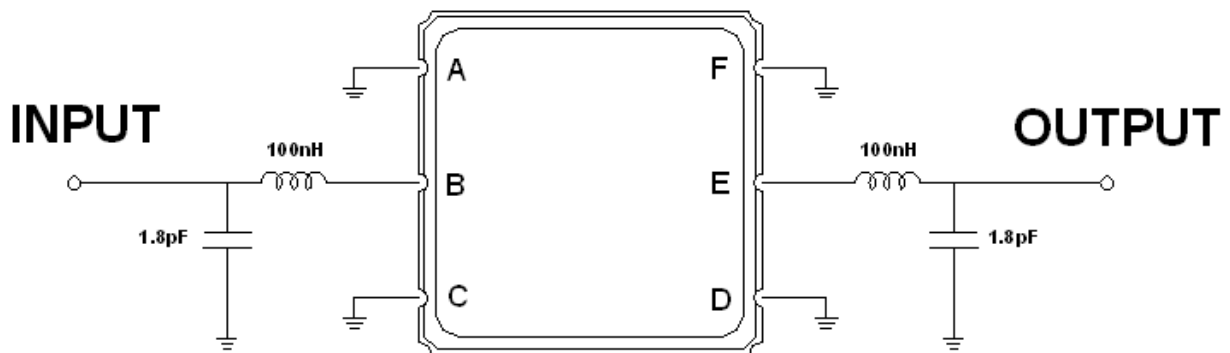


## Mechanical Dimensions (mm)



Pin Description	
A, C, D, F	Ground
B	In
E	Out

## Test Circuit



Source and Load Impedance: 50  $\Omega$

**Maximum Ratings**

Parameters Description	Unit	Minimum	Typical	Maximum
Operating Temperature Range	°C	-10	-	+60
Storage Temperature Range	°C	-40	-	+85
Maximum DC Voltage	V	-	-	0
Maximum Input Power	dBm	-	-	5
Source Impedance (single ended) <sup>(1)</sup>	Ω	-	50	-
Load Impedance (single ended) <sup>(1)</sup>	Ω	-	50	-

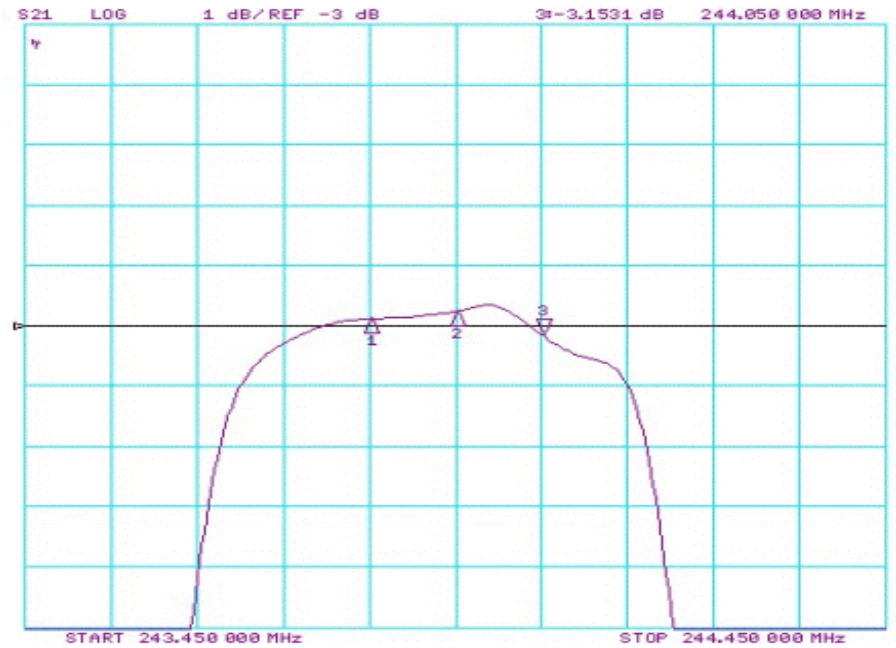
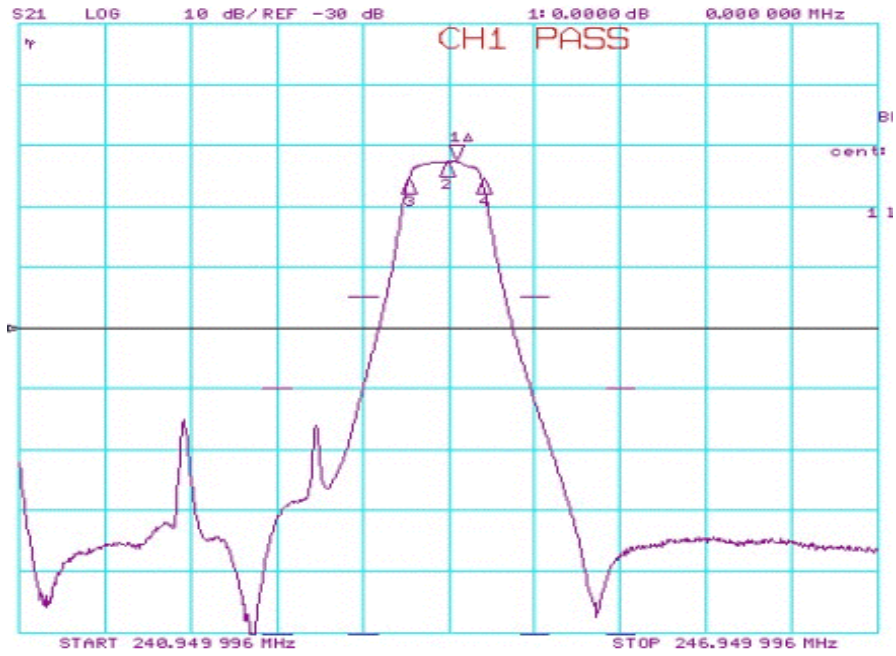
Notes: With matching network (Ref. Testing Environment Circuit as shown above)

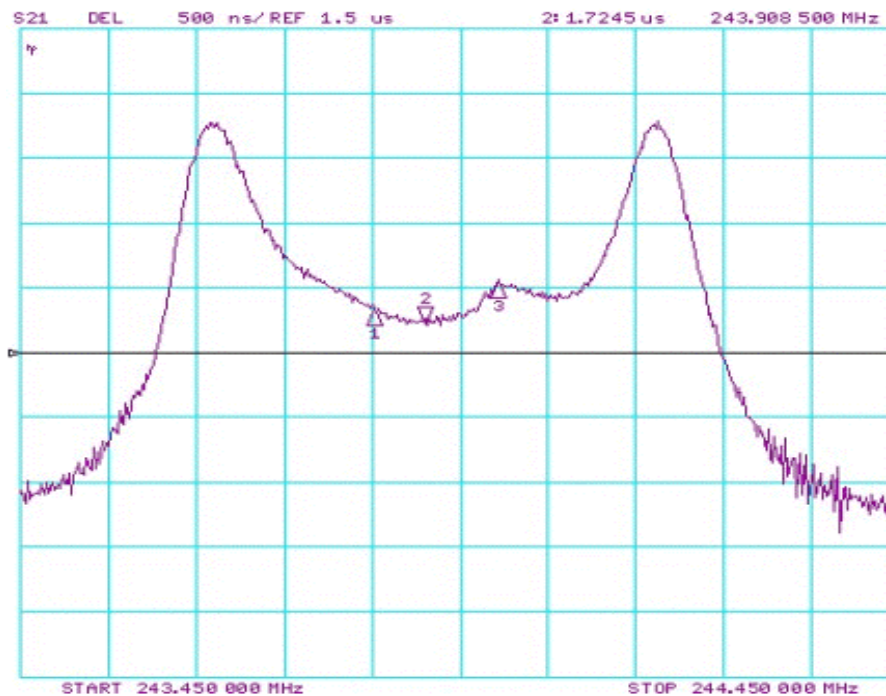
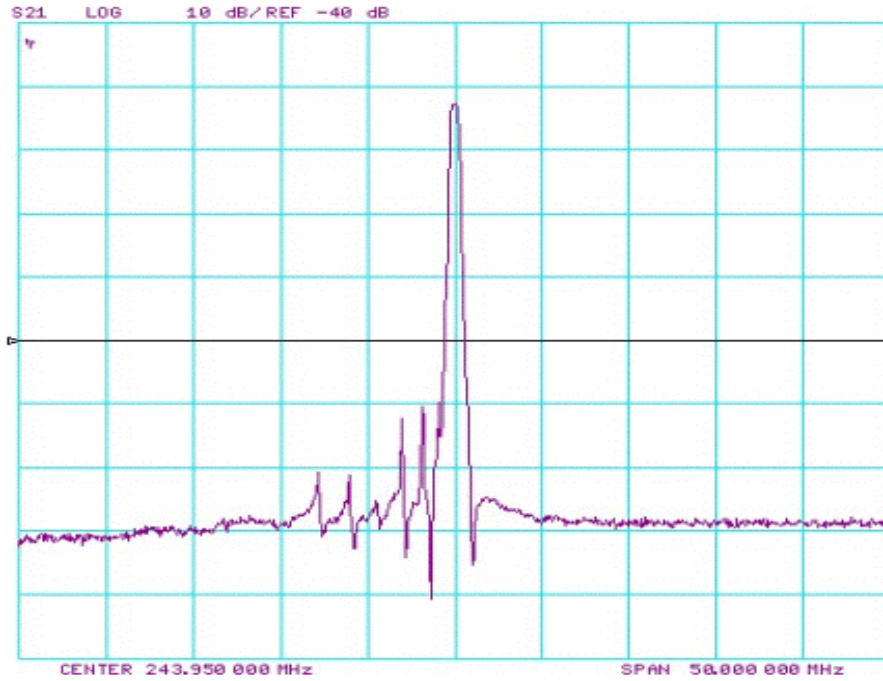
**Electrical Specification**

Parameters Description	Unit	Minimum	Typical	Maximum
Center Frequency (Fo)	MHz	-	243.95	-
Insertion Loss at Fo	dB	-	3.0	4.0
Amplitude Ripple within Fo±100 KHz	dB	-	0.5	1.0
Group Delay Ripple within Fo±100 KHz	μsec	-	0.4	1.0
Attenuation:				
Fo ± 600 KHz	dB	25	30	-
Fo ± 10.7 MHz	dB	50	65	-
Fo ± 21.4 MHz	dB	60	65	-



### Frequency Performance



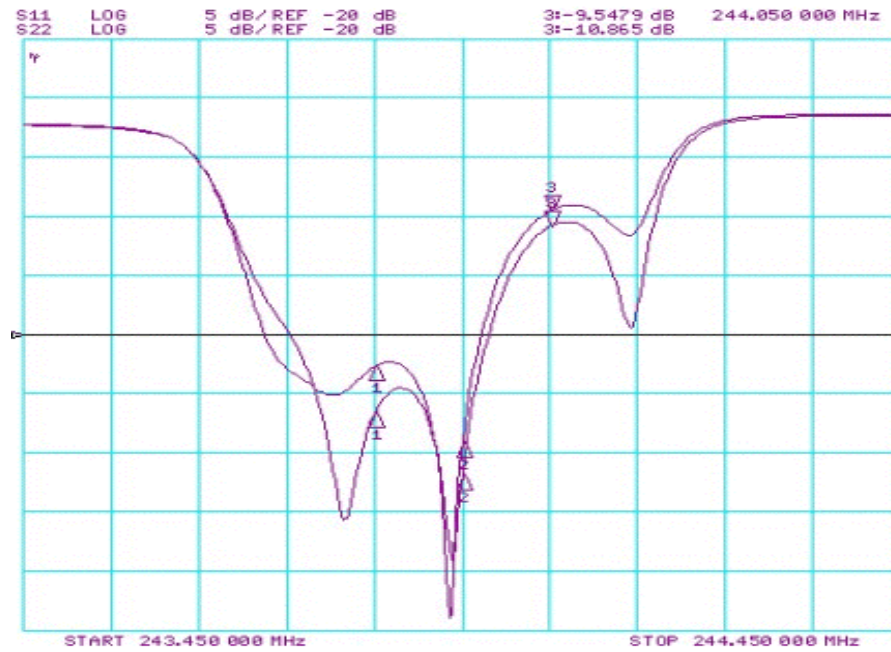




Oscilent Part Number  
**803-RF243.95M-A**

January 2010 Rev A

PHS, IF SAW Filter





### Smith Chart

