



Oscilent Corporation

PRODUCT SPECIFICATION

REV A January 2010


Oscilent Controlled Document

Ordering Code / Part Number	Product Description
805-RF434.42M-B	Remote Control, RF SAW Filter

Specification Contents

- o Mechanical Dimensions
- o Test Circuit
- o Maximum Ratings
- o Electrical Specification
- o Frequency Performance

Notes

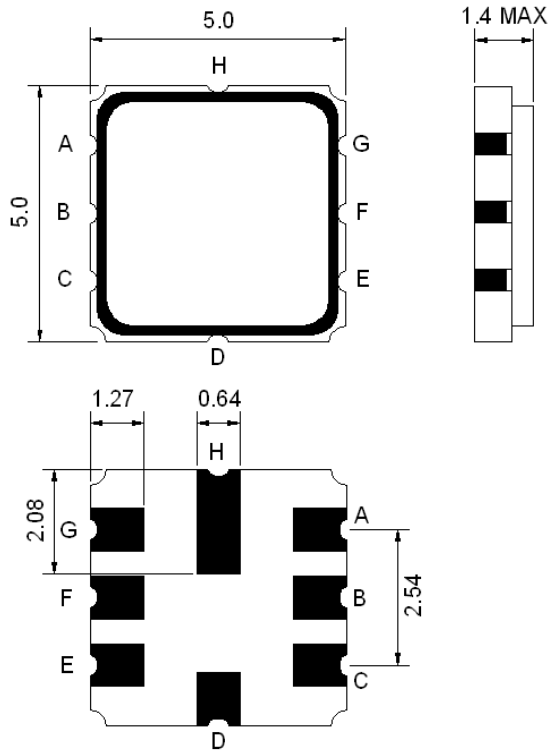
- o Electrostatic Sensitive Device (ESD) 
- o Avoid excessive ultrasonic exposure
- o Solderability compatible with JEDEC J-STD-020C Pb-free process, 260°C peak reflow temperature
- o This product complies with EU directive 2002/95/EC (RoHS compliance)



Oscilent Corporation
Telephone: 1.949.252.0522
Fax: 1.949.252.0522
Email: sales@oscilent.com

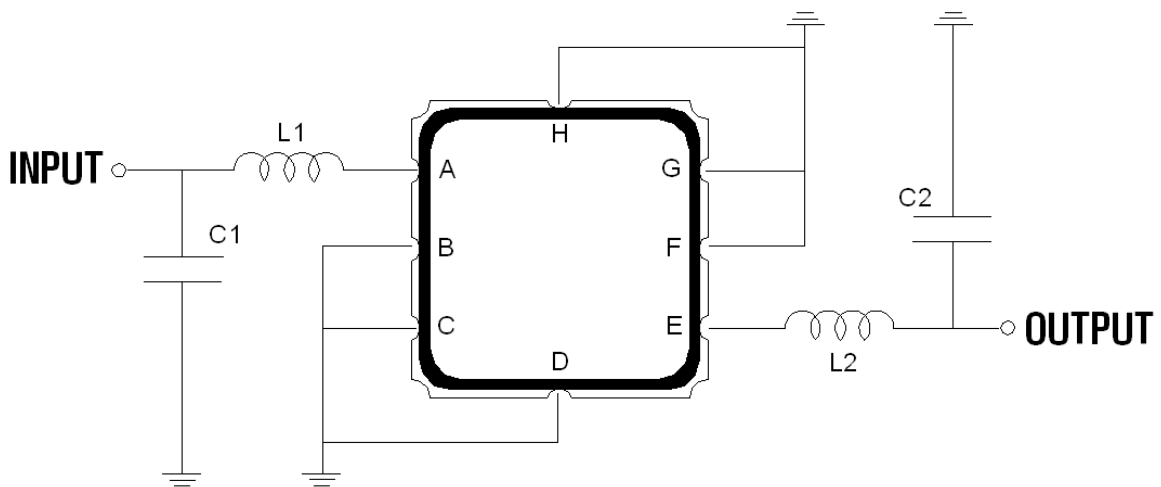


Mechanical Dimensions (mm)



Pin Description	
A, C, D, F, G, H	Ground
B	In
E	Out

Test Circuit



L1=33nH , L2=33nH
 C1=5.6pF , C2=5.6pF



Maximum Ratings

Parameters Description	Unit	Minimum	Typical	Maximum
Operating Temperature Range	°C	-40	-	+85
Storage Temperature Range	°C	-40	-	+85
Maximum DC Voltage	V	-	-	10
Maximum Input Power	dBm	-	-	10
Source Impedance (single ended) ⁽¹⁾	Ω	-	50	-
Load Impedance (single ended) ⁽¹⁾	Ω	-	50	-

Notes: With Matching Network

Electrical Specification

Parameters Description	Unit	Minimum	Typical	Maximum
Center Frequency (Fo)	MHz	-	434.42	-
Insertion Loss within 434.30 ~ 434.54 MHz	dB	-	2.0	4.5
Pass Band Ripple within 434.30 ~ 434.54 MHz	dB	-	1.0	2.0
Attenuation				
10.0 ~ 415.0 MHz	dB	45	50	-
415.0 ~ 429.0 MHz	dB	40	45	-
429.0 ~ 433.42 MHz	dB	15	20	-
435.42 ~ 443.0 MHz	dB	10	15	-
443.0 ~ 550.0 MHz	dB	35	40	-
550.0 ~ 1000.0 MHz	dB	45	50	-



Frequency Performance

