



REV A January 2010

Oscilent Controlled Document

| Ordering Code / Part Number | Product Description           |
|-----------------------------|-------------------------------|
| 805-RF433.92M-C             | Remote Control, RF SAW Filter |

### Specification Contents

- o Mechanical Dimensions
- o Test Circuit
- o Maximum Ratings
- o Electrical Specification
- o Frequency Performance

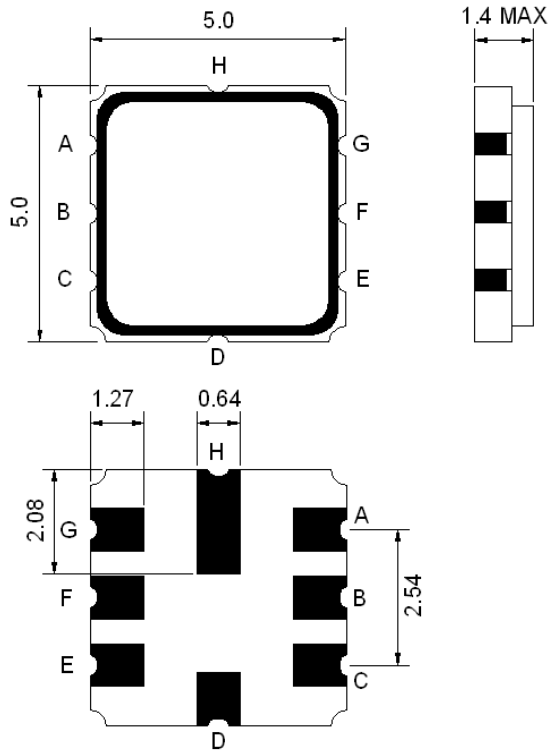
### Notes

- o Electrostatic Sensitive Device (ESD) 
- o Avoid excessive ultrasonic exposure
- o Solderability compatible with JEDEC J-STD-020C Pb-free process, 260°C peak reflow temperature
- o This product complies with EU directive 2002/95/EC (RoHS compliance)



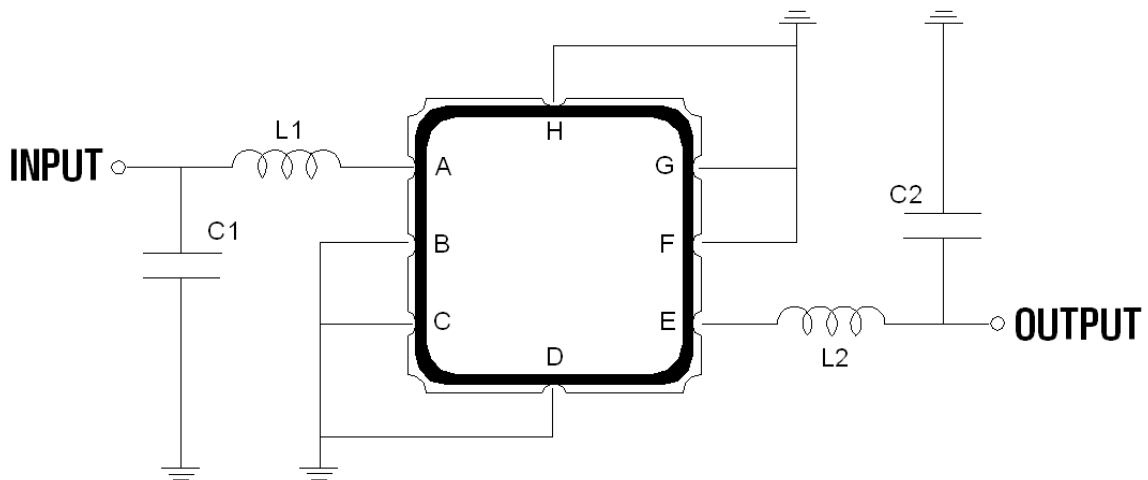


## Mechanical Dimensions (mm)



| Pin Description  |        |
|------------------|--------|
| B, C, D, F, G, H | Ground |
| A                | In     |
| E                | Out    |

## Test Circuit



L1=39nH , L2=39nH  
 C1=3.0pF , C2=3.0pF

**Maximum Ratings**

| Parameters Description                         | Unit | Minimum | Typical | Maximum |
|--|------|---------|---------|---------|
| Operating Temperature Range                    | °C   | -45     | -       | +120    |
| Storage Temperature Range                      | °C   | -40     | -       | +85     |
| Maximum DC Voltage                             | V    | -       | -       | 0       |
| Maximum Input Power                            | dBm  | -       | -       | 10      |
| Source Impedance (single ended) <sup>(1)</sup> | Ω    | -       | 50      | -       |
| Load Impedance (single ended) <sup>(1)</sup>   | Ω    | -       | 50      | -       |

Notes: With Matching Network

**Electrical Specification**

| Parameters Description                     | Unit  | Minimum | Typical | Maximum |
|--|-------|---------|---------|---------|
| Center Frequency (Fo)                      | MHz   | -       | 433.92  | -       |
| Insertion Loss within 433.8 ~ 434.12 MHz   | dB    | -       | 2.2     | 4.0     |
| Relative Passband                          |       |         |         |         |
| 433.76 ~ 434.08 MHz                        | dB    | -       | -       | 2.0     |
| 433.74 ~ 434.10 MHz                        | dB    | -       | -       | 3.0     |
| 433.68 ~ 434.16 MHz                        | dB    | -       | -       | 6.0     |
| Relative Pass bandwidth (BW <sub>3</sub> ) | KHz   | 670     | 720     | -       |
| Attenuation                                |       |         |         |         |
| 10.0 ~ 414.0 MHz                           | dB    | 45      | 48      | -       |
| 414.0 ~ 428.0 MHz                          | dB    | 40      | 43      | -       |
| 428.0 ~ 432.92 MHz                         | dB    | 15      | 19      | -       |
| 434.92 ~ 442.0 MHz                         | dB    | 10      | 14      | -       |
| 442.0 ~ 550.0 MHz                          | dB    | 35      | 38      | -       |
| 550.0 ~ 1000.0 MHz                         | dB    | 45      | 50      | -       |
| Turnover To                                | deg.C | -       | 25      | -       |



Oscilent Part Number

**805-RF433.92M-C**

January 2010 Rev A

Remote Control, RF SAW Filter



## Frequency Performance

