



# PRODUCT SPECIFICATION

REV A January 2010


Oscilent Controlled Document

| Ordering Code / Part Number | Product Description     |
|-----------------------------|-------------------------|
| 803-RF325.3M-A              | Wireless, RF SAW Filter |

## Specification Contents

- o Mechanical Dimensions
- o Test Circuit
- o Maximum Ratings
- o Electrical Specification
- o Frequency Performance

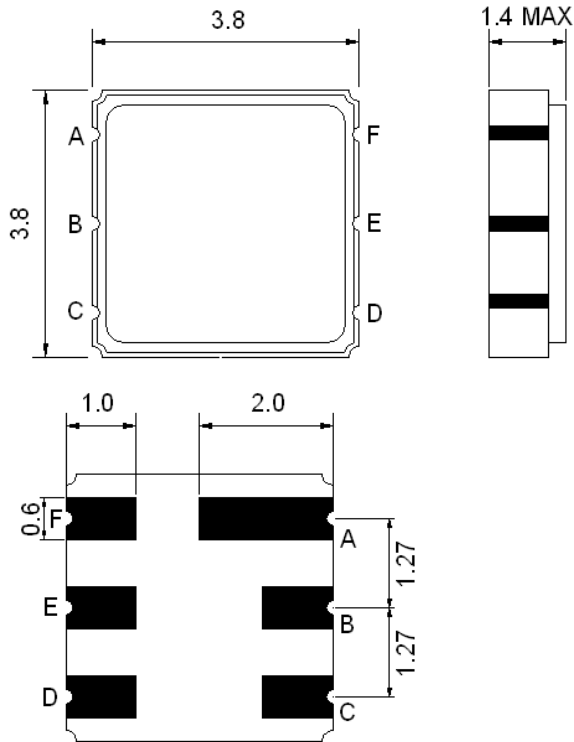
## Notes

- o Electrostatic Sensitive Device (ESD) 
- o Avoid excessive ultrasonic exposure
- o Solderability compatible with JEDEC J-STD-020C Pb-free process, 260°C peak reflow temperature
- o This product complies with EU directive 2002/95/EC (RoHS compliance)



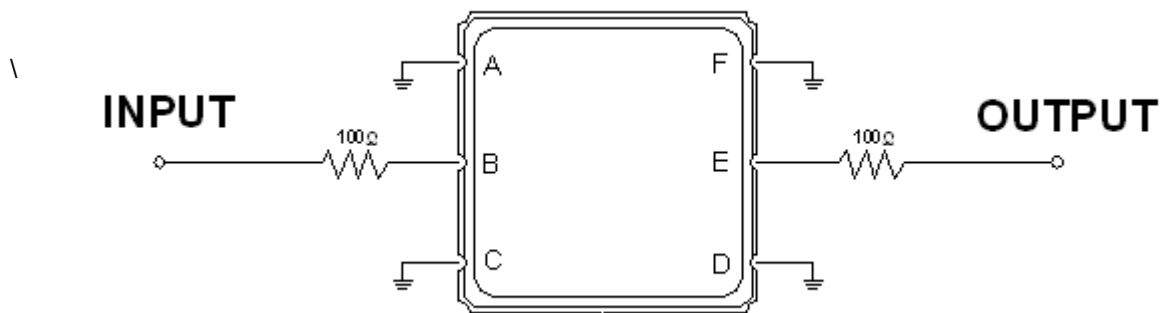


### Mechanical Dimensions (mm)



| Pin Description |        |
|-----------------|--------|
| A, C, D, F      | Ground |
| B               | In     |
| E               | Out    |

### Test Circuit



Source and Load Impedance: 50  $\Omega$



## Maximum Ratings

| Parameters Description                         | Unit | Minimum | Typical | Maximum |
|--|------|---------|---------|---------|
| Operating Temperature Range                    | °C   | -30     | -       | +65     |
| Storage Temperature Range                      | °C   | -40     | -       | +85     |
| Maximum DC Voltage                             | V    | -       | -       | 10      |
| Maximum Input Power                            | dBm  | -       | -       | 0       |
| Source Impedance (single ended) <sup>(1)</sup> | Ω    | -       | 150     | -       |
| Load Impedance (single ended) <sup>(1)</sup>   | Ω    | -       | 150     | -       |

Notes: No Matching Network (Ref. Testing Environment Circuit as shown above).  
Those impedances could be modified with different impedance values and/or structures, if necessary.

## Electrical Specification

| Parameters Description                    | Unit              | Minimum | Typical | Maximum |
|---|-------------------|---------|---------|---------|
| Center Frequency (Fo)                     | MHz               | -       | 325.3   | -       |
| Insertion Loss within 322.0 ~ 328.6 MHz   | dB                | -       | 2.5     | 3.5     |
| Amplitude Ripple within 322.0 ~ 328.6 MHz | dB <sub>p-p</sub> | -       | 0.8     | 1.5     |
| Attenuation:                              |                   |         |         |         |
| Fo-100.0 ~ Fo-39.5 MHz                    | dB                | 40      | 50      | -       |
| Fo+39.5 ~ Fo+100.0 MHz                    | dB                | 50      | 60      | -       |



### Frequency Performance

