



# PRODUCT SPECIFICATION

REV A January 2010

Oscilent Controlled Document

Ordering Code / Part Number	Product Description
805-RF868.69M-E	Remote Control, RF SAW Filter

## Specification Contents

- o Mechanical Dimensions
- o Test Circuit
- o Maximum Ratings
- o Electrical Specification
- o Frequency Performance

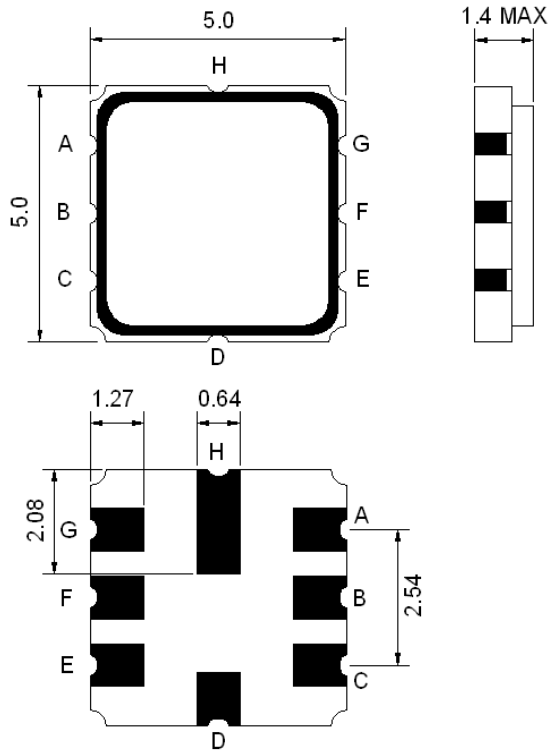
## Notes

- o Electrostatic Sensitive Device (ESD) 
- o Avoid excessive ultrasonic exposure
- o Solderability compatible with JEDEC J-STD-020C Pb-free process, 260°C peak reflow temperature
- o This product complies with EU directive 2002/95/EC (RoHS compliance)



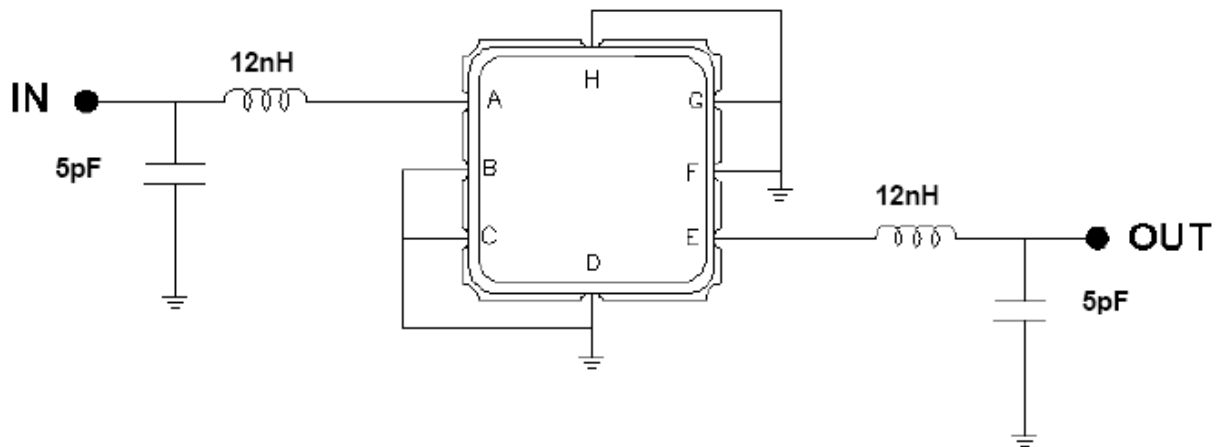


**Mechanical Dimensions (mm)**



Pin Description	
B, C, D, F, G, H	Ground
A	In
E	Out

**Test Circuit**





## Maximum Ratings

Parameters Description	Unit	Minimum	Typical	Maximum
Operating Temperature Range	°C	-45	-	+85
Storage Temperature Range	°C	-45	-	+85
Maximum DC Voltage	V	-	-	0
Maximum Input Power	dBm	-	-	0
Source Impedance (single ended) <sup>(1)</sup>	$\Omega//pF$	-	117//3.7	-
Load Impedance (single ended) <sup>(1)</sup>	$\Omega//pF$	-	117//3.7	-

Notes: With Matching Network

## Electrical Specification

Parameters Description	Unit	Minimum	Typical	Maximum
Center Frequency (Fo)	MHz	-	868.69	-
Minimum Insertion Loss within 868.7 ~ 869.38 MHz	dB	-	3.3	4.7
Relative Passband				
868.7 ~ 869.38 MHz	dB	-	1.5	3.0
867.92 ~ 869.46 MHz	dB	-	2.0	6.0
3dB Bandwidth	KHz	-	1900	-
Attenuation:				
10.0 ~ 700.0 MHz	dB	50	55	-
700.0 ~ 830.0 MHz	dB	35	45	-
830.0 ~ 850.25 MHz	dB	32	40	-
850.25 ~ 865.27 MHz	dB	25	27	-
871.25 ~ 874.75 MHz	dB	11	15	-
874.75 ~ 883.25 MHz	dB	15	20	-
883.25 ~ 900.0 MHz	dB	30	32	-
900.0 ~ 1000.0 MHz	dB	35	45	-



## Frequency Performance

