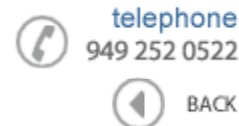


**Data Sheet**

Product Category: IF SAW Filter

Part Number	Package	Application	Last Modified
820-IF70.0M-GB	20.2 x 12.6mm	IF SAW Filter	Mar. 10, 2007

TYPE :

70MHz SAW Filter

PART NUMBER :

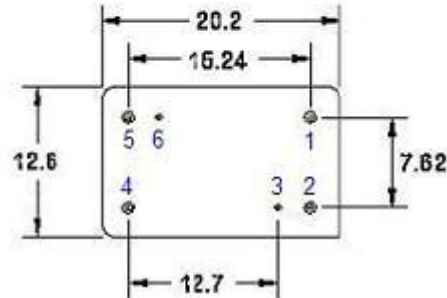
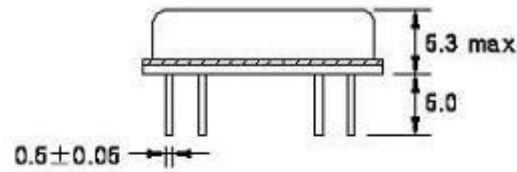
820-IF70.0M-GB**OPERATING CONDITIONS / ELECTRICAL CHARACTERISTICS**

PARAMETERS	Minimum	Typical	Maximum	Units
Center Frequency (Fo)	69.92	70.0	70.08	MHz
Insertion Loss at Fo	-	23.0	24.2	dB
Source Impedance (single ended)*	-	50	-	ohm
Load Impedance (single ended)*	-	50	-	ohm
Bandwidth -1.0 dB	-	20.10	-	MHz
Bandwidth -3.0 dB	20.3	20.40	-	MHz
Bandwidth -40.0 dB	-	21.70	21.80	MHz
Lower Sidelobe	-	55	-	dB
Upper Sidelobe	-	55	-	dB
Amplitude Ripple (Fo +/-9.75MHz)	-	0.7	1.0	dBp-p
Group Delay Variation(Fo +/-9.75MHz)	-	60	100	nsec
Absolute Delay @ Fo	-	2.35	-	µsec
Temperature Coefficient	-	-72	-	ppm/°C

*With Matching Network(ref. Testing Environment Circuit as shown below).

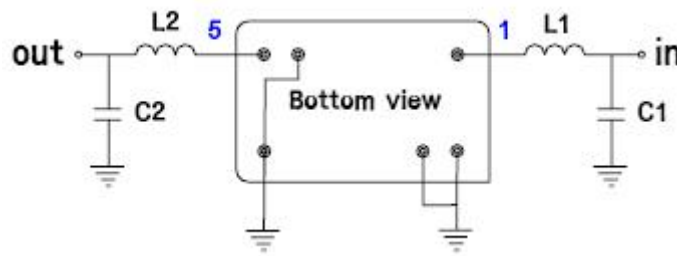
Those impedances could be modified with different impedance values and/or structures, if necessary.

PACKAGE OUTLINE (mm)



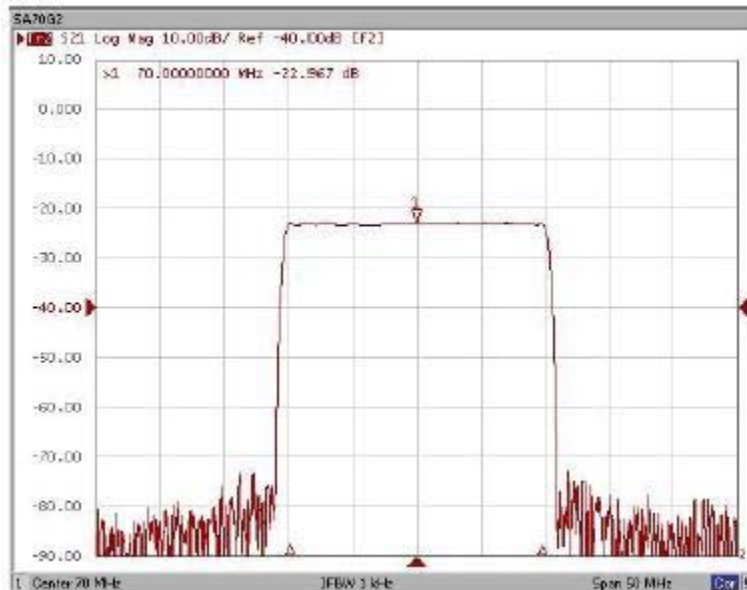
PIN Descriptions: IN-10, OUT-5, GROUND-2,3,4,6,

TEST FIXTURE



Test Fixture & Values	
Input	L1=180nH , C1=30pF
Output	L2=180nH , C2=20pF

FREQUENCY RESPONSE



Oscilent Corporation - CALL **949.252.0522**

Part No.: **820-IF70.0M-GB**

18195 East McDermott Street , Building D , Irvine , CA 92614 , USA
Fax: 949.252.0599 , E-Mail: Sales@Oscilent.com

[Crystal Oscillators](#) | [Quartz Crystal](#) | [TCXO](#) | [VCXO](#) | [IF SAW Filter](#) | [RF SAW Filter](#) | [Ceramic Resonator](#)
[Crystal Filter](#) | [Ceramic Filter](#) | [SAW Filter / SAW Devices](#) | [Site Map](#)