



PRODUCT SPECIFICATION

REV A January 2011

Oscilent Controlled Document

Ordering Code / Part Number	Product Description
813-SL70.0M-09	70.0 MHz IF SAW Filter 8.66 MHz Bandwidth

Specification Contents

- o Mechanical Dimensions
- o Test Circuit
- o Maximum Ratings
- o Electrical Specification
- o Frequency Response

Notes

- o Electrostatic Sensitive Device (ESD) 
- o Avoid excessive ultrasonic exposure
- o Solderability compatible with JEDEC J-STD-020C Pb-free process, 260°C peak reflow temperature
- o This product complies with EU directive 2002/95/EC (RoHS compliance)



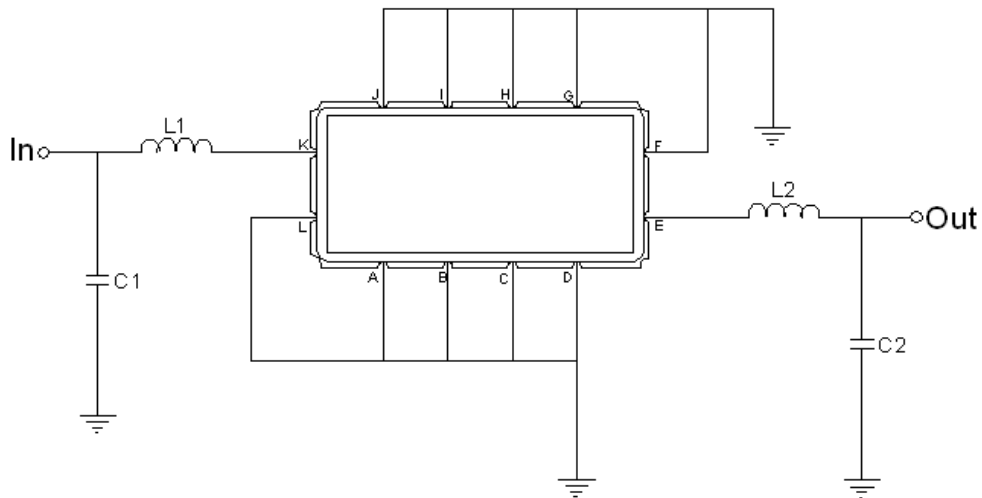


Mechanical Dimensions (mm)



Pin Description	
A, B, C, D, F, G, H, I, J, L	Ground
K	Input
E	Output

Test Circuit



Test Fixture & Values	
Input	L1=220nH Q > 40, C1=36pF
Output	L2=220nH Q > 40, C2=68pF
Source/Load Impedance	50 Ω



Maximum Ratings

Parameters Description	Unit	Minimum	Typical	Maximum
Operating Temperature Range	°C	-40	-	85
Storage Temperature Range	°C	-40	-	85
Maximum DC Voltage	V	-	-	10
Maximum Input Power	dBm	-	-	10
Source Impedance (single ended) ⁽¹⁾	Ω	-	50	-
Load Impedance (single ended) ⁽¹⁾	Ω	-	50	-

Notes: With Matching Network (Ref. Testing Environment Circuit as shown above).

Those impedances could be modified with different impedance values and/or structures, if necessary.

Electrical Specification

Parameters Description	Unit	Minimum	Typical	Maximum
Center Frequency (Fo)	MHz	69.8	70.0	70.2
Insertion Loss at Fo	dB	-	10.7	11.5
Temperature Coefficient	ppm/°C	-	-84	-
Amplitude Ripple Variation at fo ± 3.7 MHz	dB _{p-p}	-	0.6	1.0
Group Delay Variation at fo ± 3.7 MHz	nsec	-	125	160
Absolute Delay at Fo	µsec	-	0.94	-
IN/OUT Return Loss at Fo	dB	-	-	-
Bandwidth at -1.0 dB	MHz	8.4	8.66	-
Bandwidth at -3.0 dB	MHz	9.0	9.31	-
Bandwidth at -35.0 dB	MHz	-	11.70	13.0
Relative Attenuation:				
10 ~ 64 MHz	dB	40	46	-
77 ~ 140 MHz	dB	40	42	-



Frequency Response

