



PRODUCT SPECIFICATION

REV A January 2011

Oscilent Controlled Document

Ordering Code / Part Number	Product Description
807-SL300.0M-20	300MHz IF SAW Filter 23.55MHz Bandwidth

Specification Contents

- o Mechanical Dimensions
- o Test Circuit
- o Maximum Ratings
- o Electrical Specification
- o Frequency Response

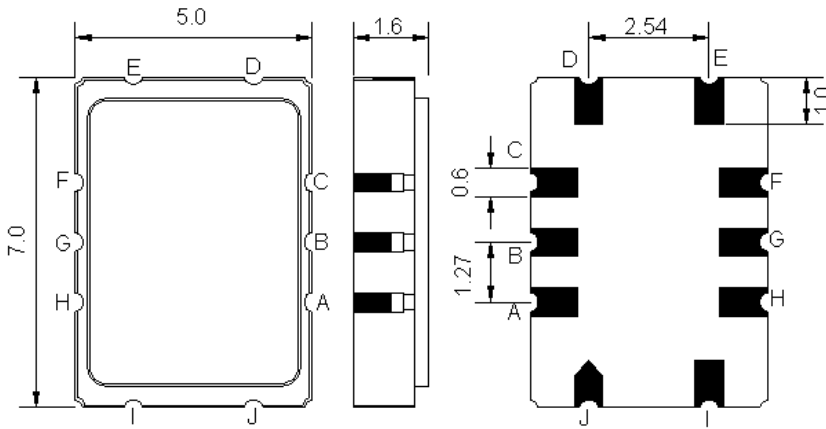
Notes

- o Electrostatic Sensitive Device (ESD) 
- o Avoid excessive ultrasonic exposure
- o Solderability compatible with JEDEC J-STD-020C Pb-free process, 260°C peak reflow temperature
- o This product complies with EU directive 2002/95/EC (RoHS compliance)



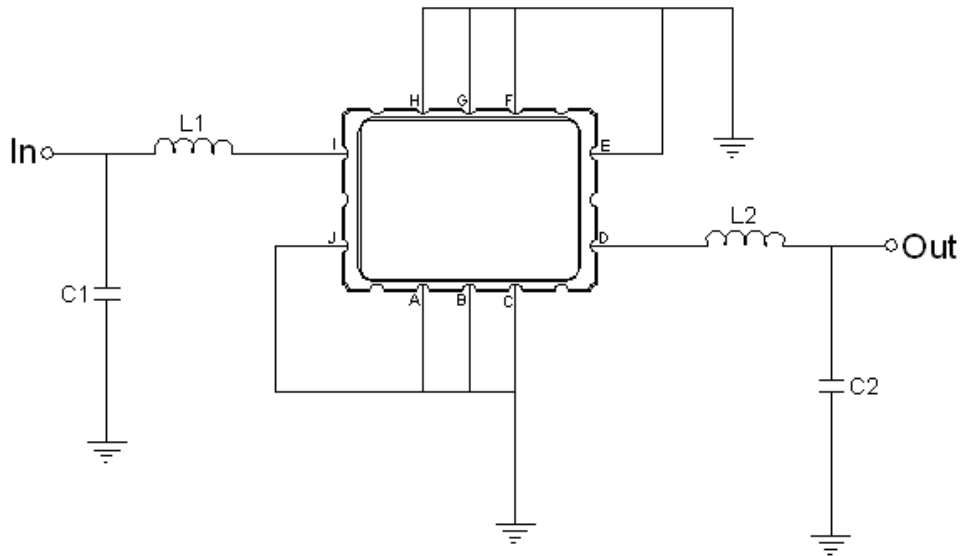


Mechanical Dimensions (mm)



Pin Description	
A, B, C, E, F, G, H, J	Ground
I	Input
D	Output

Test Circuit



Test Fixture & Values	
Input	L1=22nH, C1=13pF
Output	L2=25nH, C2=18pF
Source/Load Impedance	50 Ω



Maximum Ratings

Parameters Description	Unit	Minimum	Typical	Maximum
Operating Temperature Range	°C	-30	-	+80
Storage Temperature Range	°C	-40	-	+85
Maximum DC Voltage	V	-	-	10
Maximum Input Power	dBm	-	-	10
Source Impedance (single ended) ⁽¹⁾	Ω	-	50	-
Load Impedance (single ended) ⁽¹⁾	Ω	-	50	-

Notes: With Matching Network (Ref. Testing Environment Circuit as shown above).

Those impedances could be modified with different impedance values and/or structures, if necessary.

Electrical Specification

Parameters Description	Unit	Minimum	Typical	Maximum
Center Frequency (Fo)	MHz	-	300.0	-
Insertion Loss at Fo	dB	-	10.3	15.0
Temperature Coefficient	ppm/°C	-	-86	-
Amplitude Ripple Variation	dB _{p-p}	-	0.7	1.5
Group Delay Variation	nsec	-	50	100
Absolute Delay at Fo	µsec	-	0.51	1.0
Bandwidth at -1.0 dB	MHz	20.0	21.95	-
Bandwidth at -3.0 dB	MHz	21.0	23.55	-
Bandwidth at -40.0 dB	MHz	-	-	31.0
Relative Attenuation:				
Lower sidelobe	dB	40	-	-
Upper sidelobe	dB	40	-	-
Ambient Temperature	°C	-	25	-



Frequency Response

