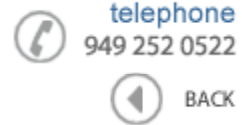




Data Sheet



Product Category: IF SAW Filter

Part Number	Package	Application	Last Modified
835-IF240.0M-B	35.0 x 12.8 Thru Hole	Base Station & Repeater	Jan. 01, 2007

TYPE :

240.0 MHz Bandpass Filter

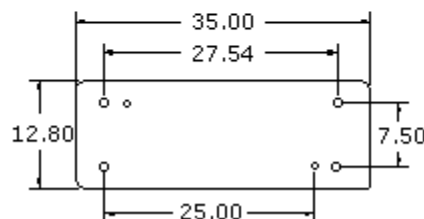
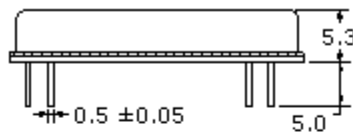
PART NUMBER :

**835-IF240.0M-B****OPERATING CONDITIONS / ELECTRICAL CHARACTERISTICS**

PARAMETERS	Minimum	Typical	Maximum	Units
Center Frequency	239.85	240.0	240.15	MHz
Insertion Loss	-	28.0	30.0	dB
Source Impedance (single ended)*	-	50	-	ohm
Load Impedance (single ended)*	-	50	-	ohm
1.5dB Bandwidth	9.0	9.24	-	MHz
3.0dB Bandwidth	9.2	9.49	-	MHz
40.0dB Bandwidth	-	10.75	11.0	MHz
Amplitude Ripple (Fo+/-4.375 MHz)	-	0.8	1.0	dBp-p
Group Delay Variation (Fo+/-4.375 MHz)	-	60	120	ns
Absolute Delay at Fo	-	3.06	-	μs
Ultimate Rejection	50	55	-	dB
Temperature Coefficient	-	-20	-	ppm/°C
Storage Temperature	-40	-	+85	°C
Operating Temperature	-30	-	+70	ppm/°C

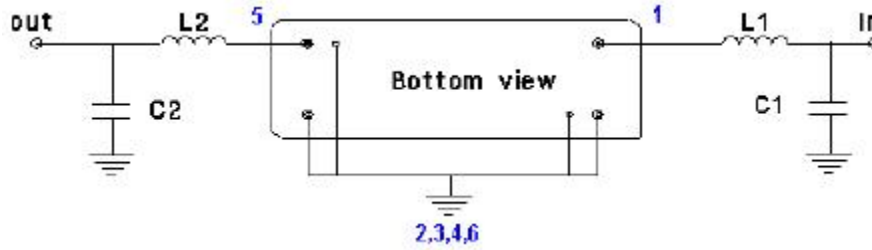
\* with Matching Network (Ref. Testing Environment Circuit as shown below). Those impedances could be modified with different impedances values and/or structures, if necessary.

\*\* Custom SAW IF Filters available. Contact Oscilent for assistance.

**PACKAGE OUTLINE (mm)**

PIN Descriptions: IN-1, OUT 5, GROUND -2,3,4,6,Case

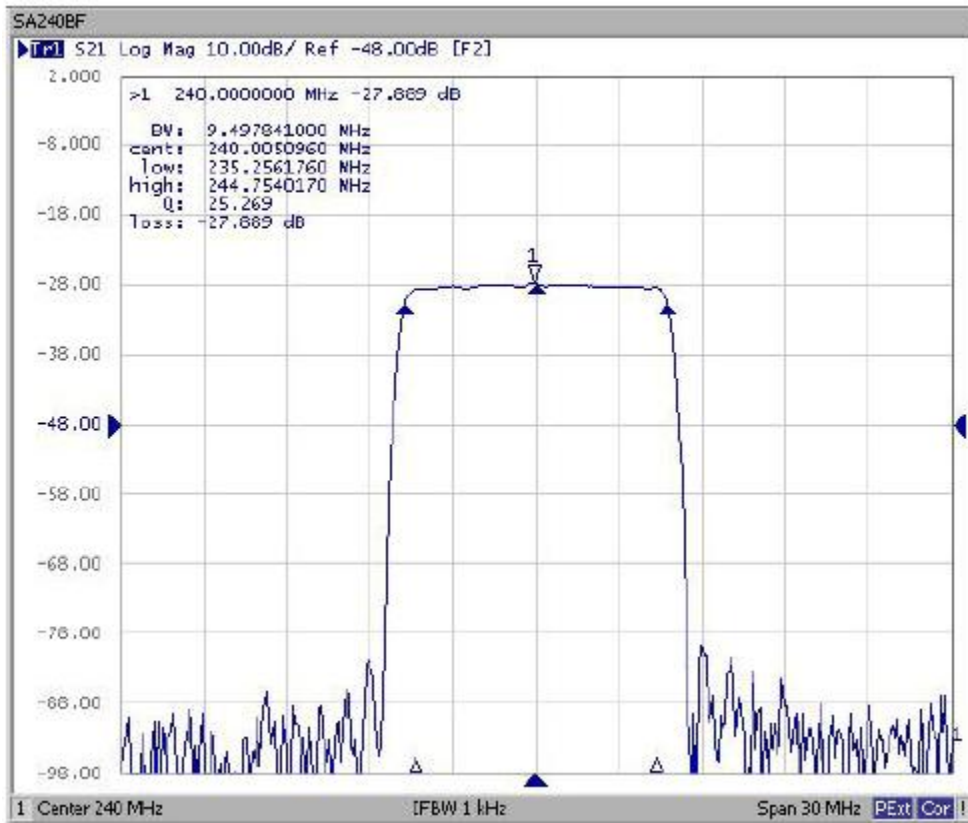
**TEST ENVIRONMENT**



Test Fixture & Values	
Input	L1=10nH , C1=15pF
Output	L2=4.7nH , C2=15pF

Source & Load Impedance: 50 ohm

**FREQUENCY RESPONSE**



**Oscilent Corporation** - CALL **949.252.0522**

**Part No.:** 835-IF240.0M-B

18195 East McDermott Street , Building D , Irvine , CA 92614 , USA  
 Fax: 949.252.0599 , E-Mail: Sales@Oscilent.com