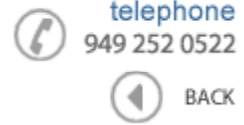




Data Sheet



Product Category: IF SAW Filter

Part Number	Package	Application	Last Modified
835-IF167.5M-A	35.0 x 12.8 Thru Hole	Base Station & Repeater	Jan. 01, 2007

TYPE :
167.5 MHz Bandpass Filter

PART NUMBER :
835-IF167.5M-A



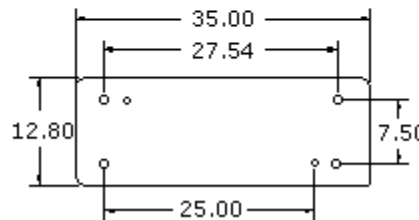
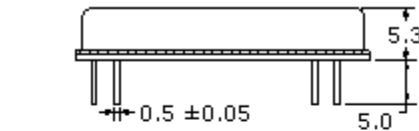
OPERATING CONDITIONS / ELECTRICAL CHARACTERISTICS

PARAMETERS	Minimum	Typical	Maximum	Units
Center Frequency (Fo)	167.35	167.5	167.65	MHz
Insertion Loss at Fo	-	24.5	26.0	dB
Source Impedance (single ended)*	-	50	-	ohm
Load Impedance (single ended)*	-	50	-	ohm
Temperature Coefficient	-	-23	-	ppm/°C
Amplitude Ripple	-	0.55	1.0	dBp-p
Bandwidth at 3.0 dB	9.8	10.0	-	MHz
Ultimate Rejection	-			
Fo + 200 KHz	-	9.4	-	dB
Fo + 400 KHz	-	21.2	-	dB
Fo + 600 KHz	-	42.3	-	dB
Fo + 1 MHz	50	62	-	dB
Adsolute Delay at Fo	-	3.12	-	us

* with Matching Network (Ref. Testing Environment Circuit as shown below). Those impedances could be modified with different impedances values and/or structures, if necessary.

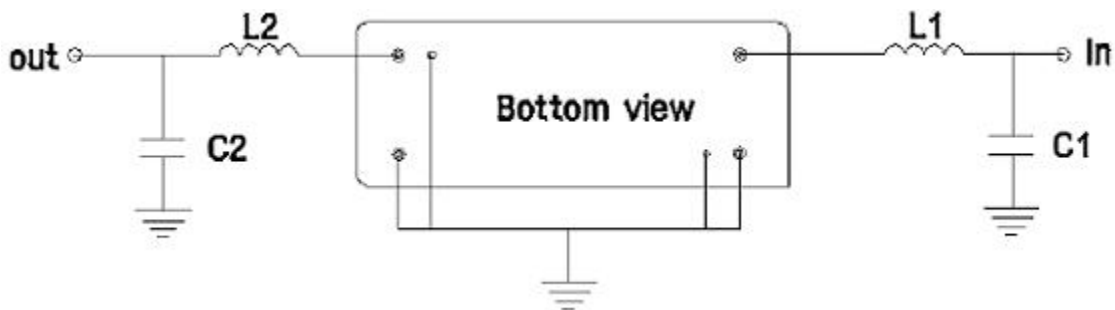
** Custom SAW IF Filters available. Contact Oscilent for assistance.

PACKAGE OUTLINE (mm)



PIN Descriptions: IN-1, OUT 5, GROUND -2,3,4,6,Case

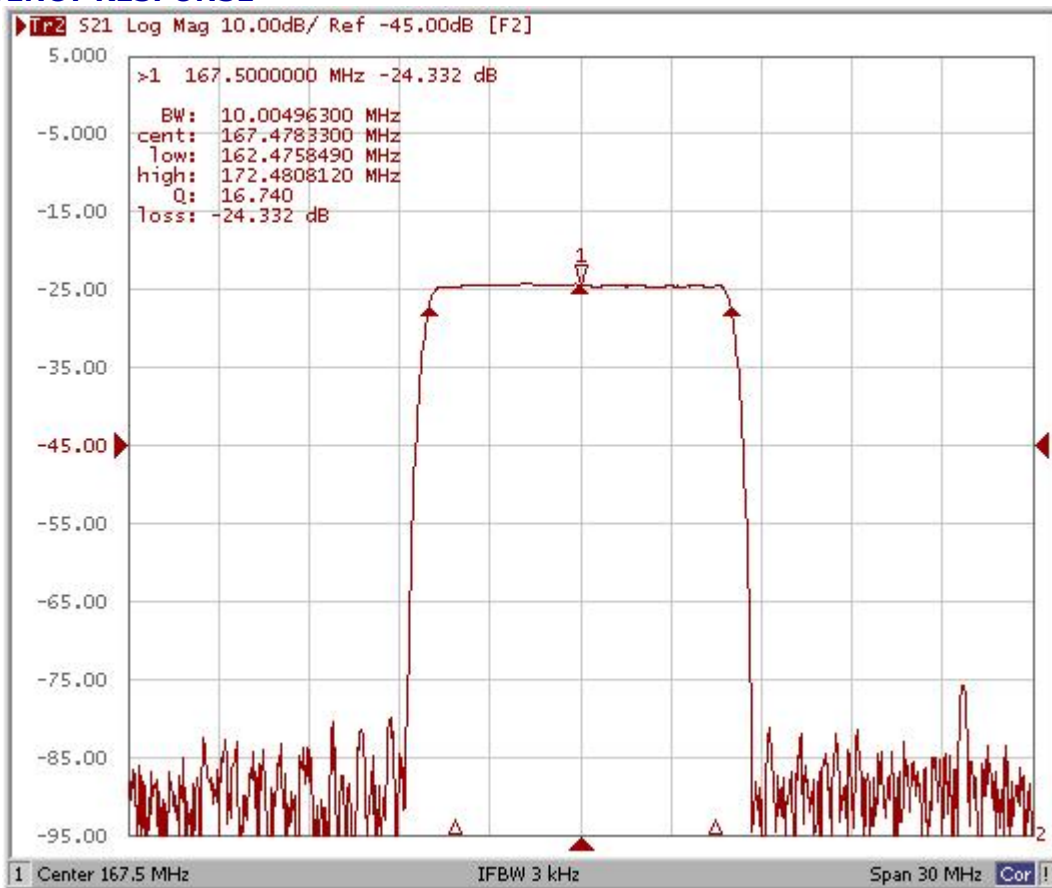
TEST ENVIRONMENT



Test Fixture & Values	
Input	L1=22nH , C1= 27pF
Output	L2=22nH , C2= 27pF

Source & Load Impedance: 50 ohm

FREQUENCY RESPONSE



Oscilent Corporation - CALL **949.252.0522**

Part No.: 835-IF167.5M-A

18195 East McDermott Street , Building D , Irvine , CA 92614 , USA
 Fax: 949.252.0599 , E-Mail: Sales@Oscilent.com