

**Data Sheet**

Product Category: IF SAW Filter

Part Number	Package	Application	Last Modified
835-IF160.0M-M	35.0 x 12.8 Thru Hole	Base Station & Repeater	Jan. 01, 2007

TYPE :

160.0 MHz Bandpass Filter

PART NUMBER :

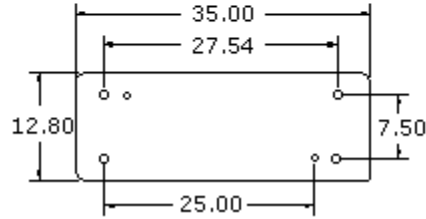
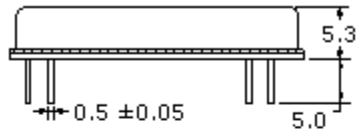
**835-IF160.0M-M****OPERATING CONDITIONS / ELECTRICAL CHARACTERISTICS**

PARAMETERS	Minimum	Typical	Maximum	Units
Center Frequency (Fo)	159.9	160.0	160.1	MHz
Insertion Loss at Fo	-	31.3	32.5	dB
Storage Temperature	-40	-	+85	°C
Operating Temperature	-30	-	+70	°C
Source Impedance (single ended)*	-	50	-	ohm
Load Impedance (single ended)*	-	50	-	ohm
Temperature Coefficient	-	-20	-	ppm/°C
Amplitude Ripple (Fo±9.375 MHz)	-	0.9	1.5	dBp-p
Bandwidth at 1.5 dB	18.9	19.12	-	MHz
Bandwidth at 3.0 dB	19.2	19.40	-	MHz
Bandwidth at 40.0 dB	-	20.78	21.0	MHz
Ultimate Rejection	50	55	-	dB
Group Delay Variation (Fo±9.375 MHz)	-	50	100	ns
Adsolute Delay at Fo	-	2.73	-	us

\* with Matching Network (Ref. Testing Environment Circuit as shown below). Those impedances could be modified with different impedances values and/or structures, if necessary.

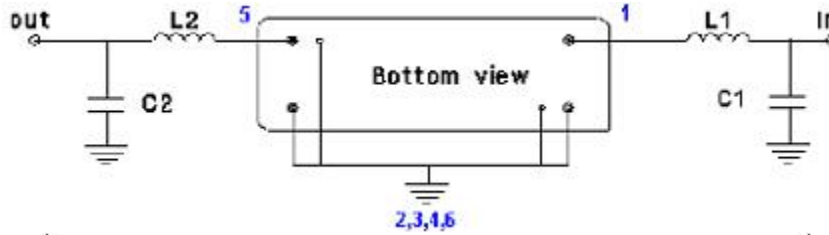
\*\* Custom SAW IF Filters available. Contact Oscilent for assistance.

**PACKAGE OUTLINE (mm)**



PIN Descriptions: IN-1, OUT 5, GROUND -2,3,4,6,Case

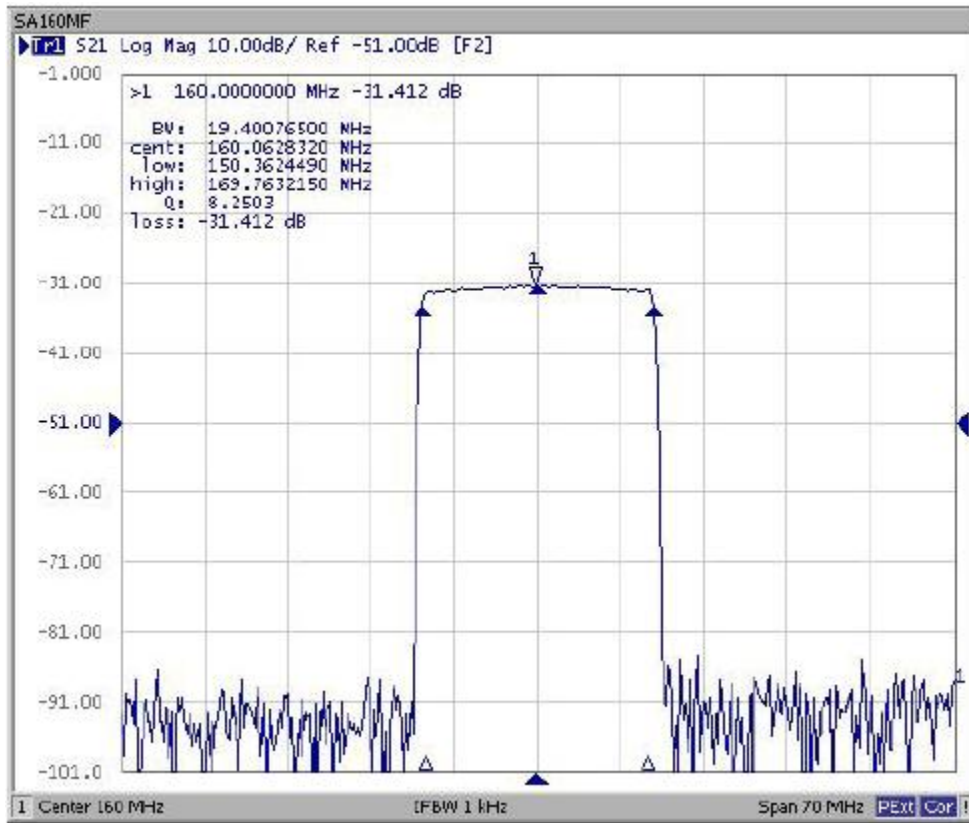
**TEST ENVIRONMENT**



Test Fixture & Values	
Input	L1=39nH , C1=0pF
Output	L2=39nH , C2=33pF

Source & Load Impedance: 50 ohm

**FREQUENCY RESPONSE**



**Oscilent Corporation** - CALL **949.252.0522**

**Part No.:** 835-IF160.0M-M

18195 East McDermott Street, Building D, Irvine, CA 92614, USA  
Fax: 949.252.0599, E-Mail: Sales@Oscilent.com