



REV A January 2011

Oscilent Controlled Document

Ordering Code / Part Number	Product Description
821-IF115.0M-C	115MHz IF SAW Filter 26.1MHz Bandwidth

Specification Contents

- o Mechanical Dimensions
- o Test Circuit
- o Maximum Ratings
- o Electrical Specification
- o Frequency Response

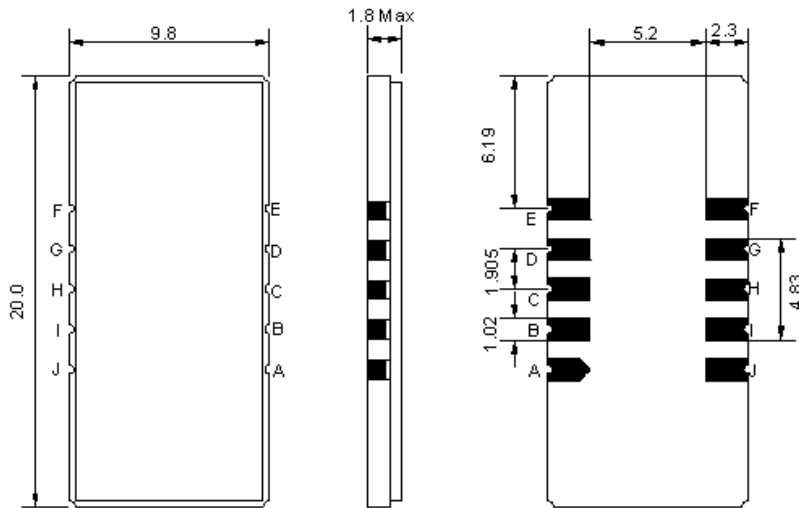
Notes

- o Electrostatic Sensitive Device (ESD) 
- o Avoid excessive ultrasonic exposure
- o Solderability compatible with JEDEC J-STD-020C Pb-free process, 260°C peak reflow temperature
- o This product complies with EU directive 2002/95/EC (RoHS compliance)



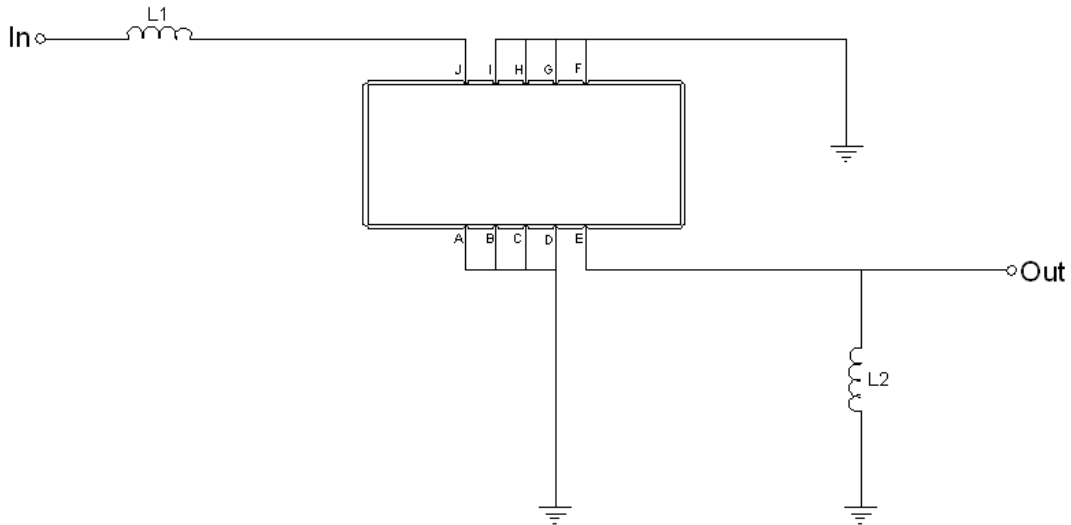


Mechanical Dimensions (mm)



Pin Description	
A, B, C, D, F, G, H, I	Ground
J	Input
E	Output

Test Circuit



Test Fixture & Values	
Input	L1= 82 nH
Output	L2= 56 nH
Source/Load Impedance	50 Ω



Maximum Ratings

Parameters Description	Unit	Minimum	Typical	Maximum
Operating Temperature Range	°C	-30	-	+80
Storage Temperature Range	°C	-40	-	+85
Maximum DC Voltage	V	-	-	10
Maximum Input Power	dBm	-	-	10
Source Impedance (single ended) ⁽¹⁾	Ω	-	50	-
Load Impedance (single ended) ⁽¹⁾	Ω	-	50	-

Notes: With Matching Network (Ref. Testing Environment Circuit as shown above).

Those impedances could be modified with different impedance values and/or structures, if necessary.

Electrical Specification

Parameters Description	Unit	Minimum	Typical	Maximum
Center Frequency (Fo)	MHz	114.9	115.0	115.1
Insertion Loss at Fo	dB	-	22.0	24.0
Amplitude Ripple within fo ±12.49 MHz	dB _{p-p}	-	0.65	1.0
Group Delay Variation within fo ±12.49 MHz	nsec	-	30	100
Absolute Delay at Fo	μsec	-	1.64	-
Temperature Coefficient	ppm/°C	-	-72	-
Bandwidth at -1.0 dB	MHz	-	26.0	-
Bandwidth at -3.0 dB	MHz	26.1	26.5	-
Bandwidth at -40.0 dB	MHz	-	28.6	29.0
Lower Sidelobe	dB	50	55	-
Upper Sidelobe	dB	50	55	-



Frequency Response

