



**Data Sheet**



Product Category: IF SAW Filter

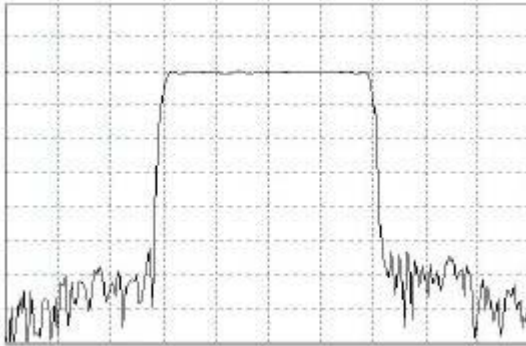
Part Number	Package	Application	Last Modified
820-IF70.0M-T	20.2 x 12.6 Thru Hole	Base Station & Repeater	Jan. 01, 2007

TYPE :  
70.0 MHz Bandpass Filter  
19.5 MHz Bandwidth

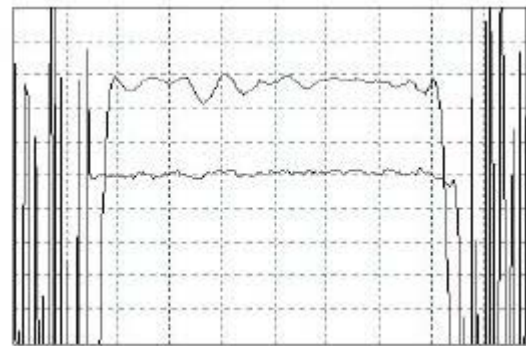
PART NUMBER :  
**820-IF70.0M-T**



**FREQUENCY CHARACTERISTICS**



Horizontal : 5.0 MHz/Div  
Vertical : 10 dB/Div



Horizontal : 3.0 MHz/Div  
Vertical : 1.0 dB/Div  
Vertical : 100 ns/Div

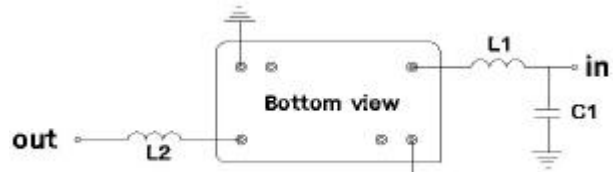
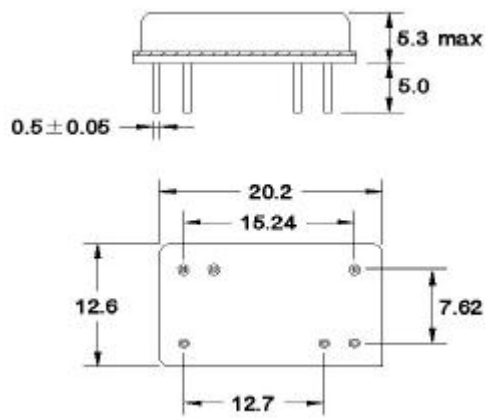
**OPERATING CONDITIONS / ELECTRICAL CHARACTERISTICS**

PARAMETERS	Minimum	Typical	Maximum	Units
Center Frequency	69.94	70	70.06	MHz
Insertion Loss	-	24.5	26.0	dB
1dB Bandwidth	19.0	19.1	-	MHz
3dB Bandwidth	19.5	19.57	-	MHz
40dB Bandwidth	-	21.43	21.7	MHz
Passband Ripple	-	0.85	1.0	dB
Group Delay Variation	-	25	50	nsec
Absolute Delay	-	1.98	-	µsec
Ultimate Rejection	50	55	-	dB
Substrate Material	-	LN	-	-
Ambient Temperature	-	25	-	°C

\* Custom SAW IF Filters available. Contact Oscilent for assistance.

**PACKAGE OUTLINE (mm)**

**TEST FIXTURE**



$L1 = 220\text{nH}$        $C1 = 43\text{pF}$   
 $L2 = 120\text{nH}$   
 Source/Load Impedance = 50 ohms

**Oscilent Corporation** - CALL **949.252.0522**

**Part No.:** **820-IF70.0M-T**

18195 East McDermott Street , Building D , Irvine , CA 92614 , USA  
 Fax: 949.252.0599 , E-Mail: Sales@Oscilent.com