



Data Sheet

telephone
949 252 0522

BACK

Product Category: IF SAW Filter

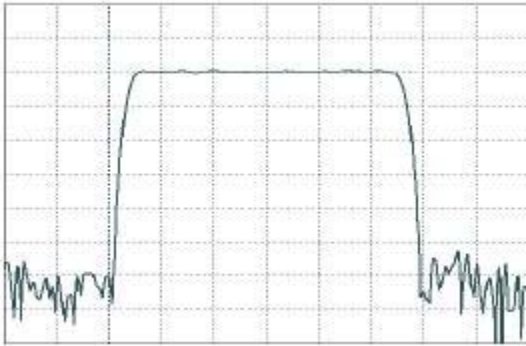
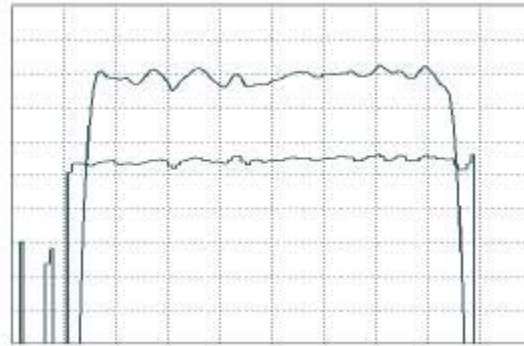
Part Number	Package	Application	Last Modified
820-IF70.0M-NR	20.2 x 12.6 Thru Hole	Base Station & Repeater	Jan. 01, 2007

TYPE :

70.0 MHz Bandpass Filter

25.0 MHz Bandwidth

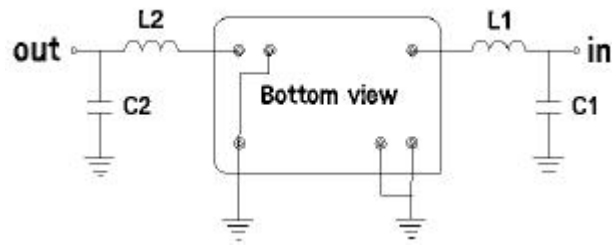
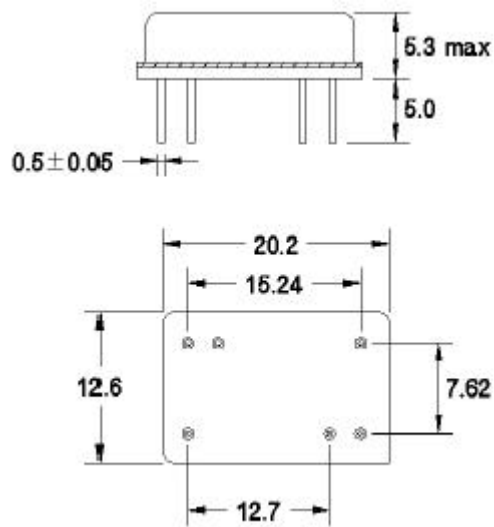
PART NUMBER :

820-IF70.0M-NR**FREQUENCY CHARACTERISTICS**Horizontal : 5.0 MHz/Div
Vertical : 10 dB/DivHorizontal : 3.6 MHz/Div
Vertical : 1.0 dB/Div
Vertical : 100 ns/Div**OPERATING CONDITIONS / ELECTRICAL CHARACTERISTICS**

PARAMETERS	Minimum	Typical	Maximum	Units
Center Frequency	69.90	70	70.10	MHz
Insertion Loss	-	26.6	28.0	dB
1dB Bandwidth	24.5	24.9	-	MHz
3dB Bandwidth	25.0	25.6	-	MHz
40dB Bandwidth	-	28.6	30.0	MHz
Passband Ripple	-	0.74	1.0	dB
Group Delay Variation	-	45	70	nsec
Absolute Delay	-	1.64	-	µsec
Ultimate Rejection	50	55	-	dB
Substrate Material	-	LN	-	-
Ambient Temperature	-	25	-	°C

* Custom SAW IF Filters available. Contact Oscilent for assistance.

PACKAGE OUTLINE (mm)**TEST FIXTURE**



$L1 = 220\text{nH}$ $C1 = 33\text{pF}$
 $L2 = 270\text{nH}$ $C2 = 22\text{pF}$
 Source/Load Impedance = 50 ohms

Oscilent Corporation - CALL **949.252.0522**

Part No.: **820-IF70.0M-NR**

18195 East McDermott Street, Building D, Irvine, CA 92614, USA
 Fax: 949.252.0599, E-Mail: Sales@Oscilent.com