



Oscilent Corporation

# PRODUCT SPECIFICATION

REV A January 2011

Oscilent Controlled Document

Ordering Code / Part Number	Product Description
820-IF63.0M-B	63.0MHz IF SAW Filter 0.4 MHz Bandwidth

## Specification Contents

- o Mechanical Dimensions
- o Test Circuit
- o Maximum Ratings
- o Electrical Specification
- o Frequency Response

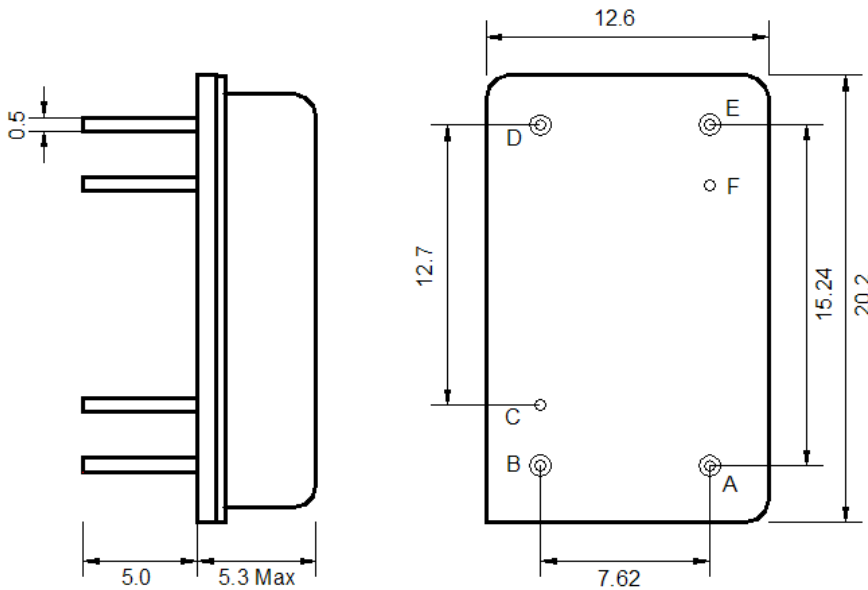
## Notes

- o Electrostatic Sensitive Device (ESD) 
- o Avoid excessive ultrasonic exposure
- o Solderability compatible with JEDEC J-STD-020C Pb-free process, 260°C peak reflow temperature
- o This product complies with EU directive 2002/95/EC (RoHS compliance)



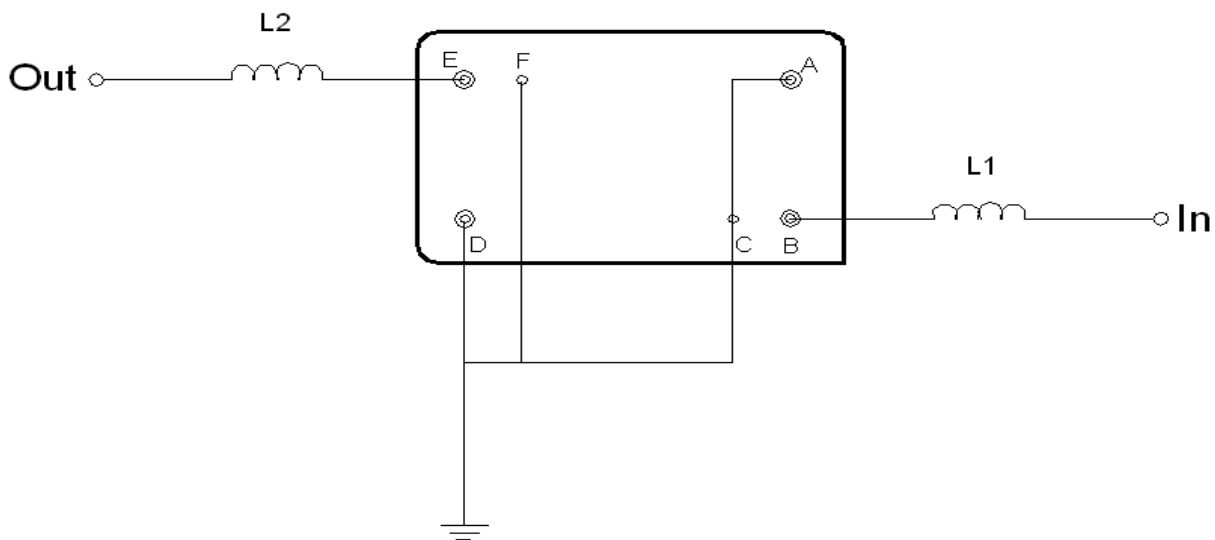


## Mechanical Dimensions (mm)



Pin Description	
A, C, D, F	Ground
B	Input
E	Output

## Test Circuit



Test Fixture & Values	
Input	L1 = 270 nH
Output	L2 = 270 nH
Source/Load Impedance	50 Ω



## Maximum Ratings

Parameters Description	Unit	Minimum	Typical	Maximum
Operating Temperature Range	°C	-55	-	85
Storage Temperature Range	°C	-55	-	85
Maximum DC Voltage	V	-	-	10
Maximum Input Power	dBm	-	-	10
Source Impedance (single ended) <sup>(1)</sup>	Ω	-	50	-
Load Impedance (single ended) <sup>(1)</sup>	Ω	-	50	-

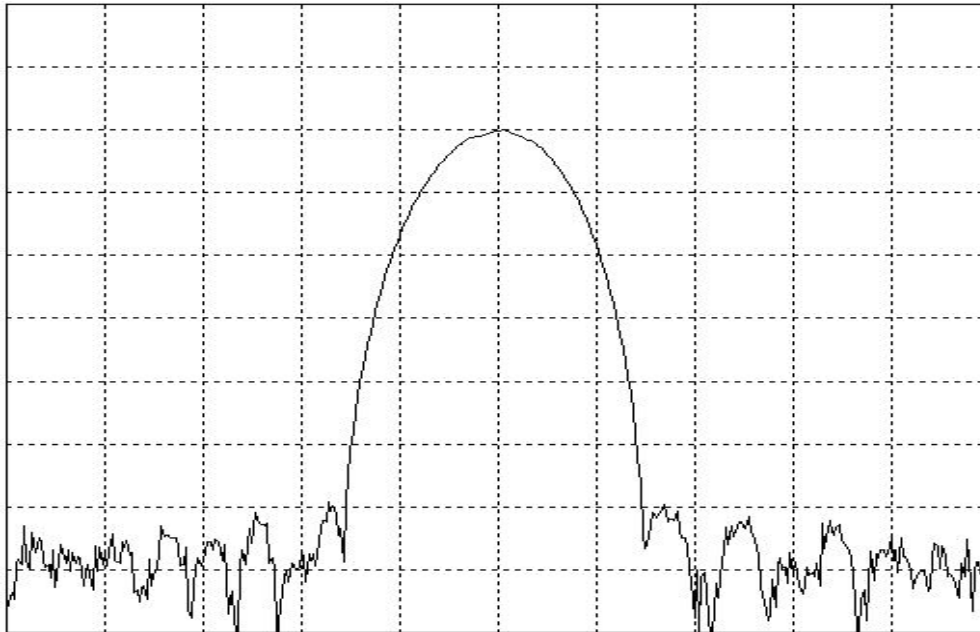
Notes: With Matching Network (Ref. Testing Environment Circuit as shown above).  
Those impedances could be modified with different impedance values and/or structures, if necessary.

## Electrical Specification

Parameters Description	Unit	Minimum	Typical	Maximum
Center Frequency (Fo)	MHz	-	63.0	-
Insertion Loss at Fo	dB	-	14.2	15.0
Amplitude Ripple Variation at Fo±100KHz	dB <sub>p-p</sub>	-	1.0	2.0
Temperature Coefficient	ppm/°C	-	-0.03	-
Bandwidth at -3.0 dB	KHz	Fo±200	Fo±225	-
Bandwidth at -55.0 dB	KHz	-	Fo±750	Fo±800
Ultimate Attenuation	dB	60	65	-
Spurious Attenuation	dB	55	57	-

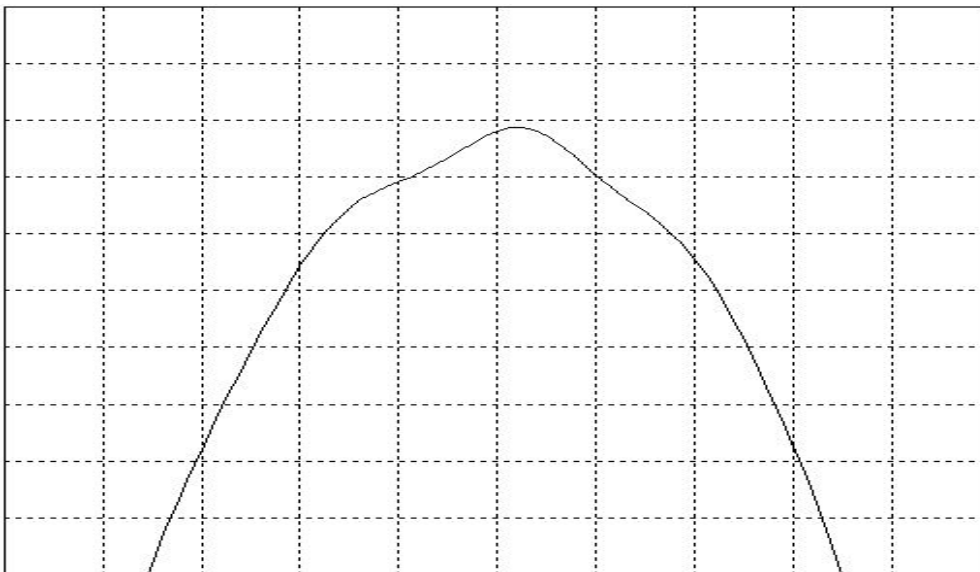


## Frequency Response



Horizontal: 500 KHz/Div

Vertical: 10 dB/Div



Horizontal: 100 KHz/Div

Vertical: 1 dB/Div