



REV A January 2011

Oscilent Controlled Document

Ordering Code / Part Number	Product Description
813-SL62.5M-10	62.5MHz IF SAW Filter 9.85MHz Bandwidth

Specification Contents

- o Mechanical Dimensions
- o Test Circuit
- o Maximum Ratings
- o Electrical Specification
- o Frequency Response

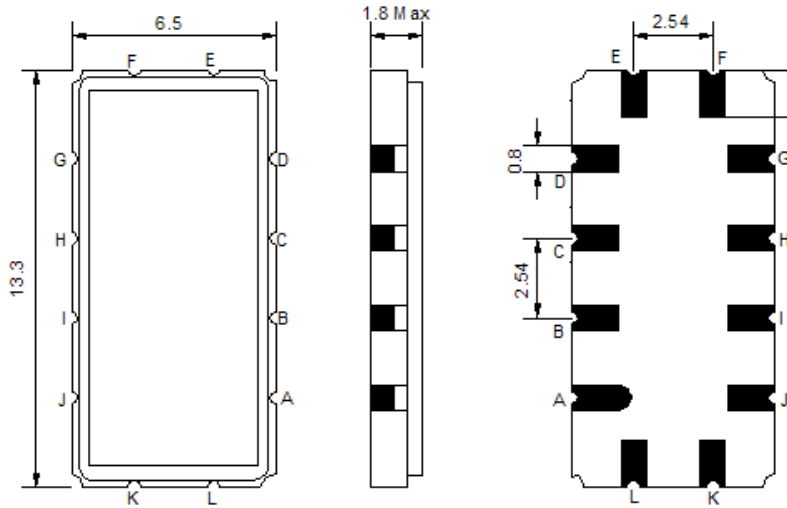
Notes

- o Electrostatic Sensitive Device (ESD) 
- o Avoid excessive ultrasonic exposure
- o Solderability compatible with JEDEC J-STD-020C Pb-free process, 260°C peak reflow temperature
- o This product complies with EU directive 2002/95/EC (RoHS compliance)



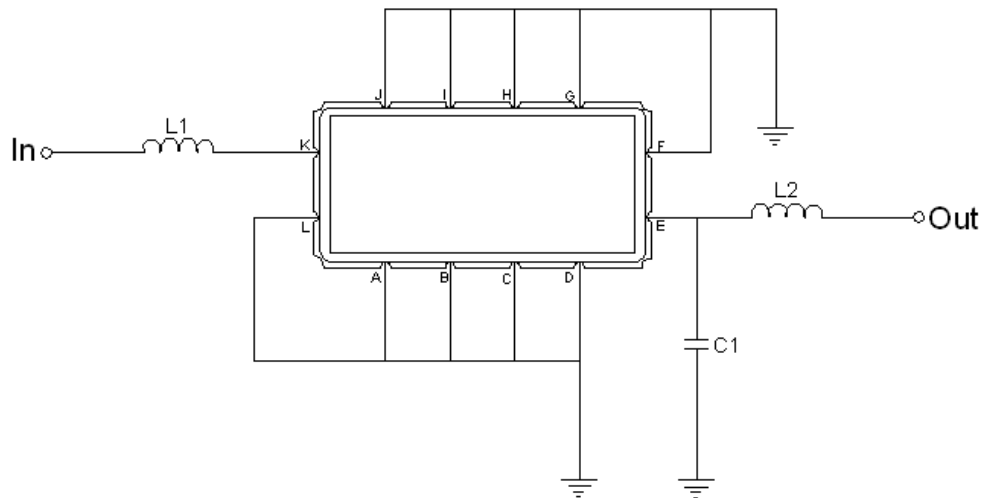


Mechanical Dimensions (mm)



Pin Description	
A, B, C, D, F, G, H, I, J, L	Ground
K	Input
E	Output

Test Circuit



Test Fixture & Values	
Input	L1=180nH
Output	L2=150nH, C1=20pF
Source/Load Impedance	50 Ω



Maximum Ratings

Parameters Description	Unit	Minimum	Typical	Maximum
Operating Temperature Range	°C	-30	-	80
Storage Temperature Range	°C	-40	-	85
Maximum DC Voltage	V	-	-	10
Maximum Input Power	dBm	-	-	10
Source Impedance (single ended) ⁽¹⁾	Ω	-	50	-
Load Impedance (single ended) ⁽¹⁾	Ω	-	50	-

Notes: With Matching Network (Ref. Testing Environment Circuit as shown above).

Those impedances could be modified with different impedance values and/or structures, if necessary.

Electrical Specification

Parameters Description	Unit	Minimum	Typical	Maximum
Center Frequency (Fo)	MHz	-	62.5	-
Insertion Loss at Fo	dB	-	15.5	17.0
Amplitude Ripple Variation	dB _{p-p}	-	0.4	1.0
Group Delay Variation	nsec	-	20	100
Absolute Delay at Fo	μsec	-	0.92	-
Temperature Coefficient	ppm/°C	-	-94	-
Bandwidth at -1.0 dB	MHz	9.5	9.85	-
Bandwidth at -3.0 dB	MHz	10.2	10.6	-
Bandwidth at -40.0 dB	MHz	-	13.9	15.0
Relative Attenuation:				
Lower sidelobe	dB	40	48	-
Upper sidelobe	dB	40	45	-
IN/OUT Return Loss at Fo	dB	-	-	-



Frequency Response

