



**Data Sheet**



Product Category: IF SAW Filter

Part Number	Package	Application	Last Modified
809-SL45.77M-03	9.1 x 4.8 SMD	Mobile Communication	Jan. 01, 2007

TYPE :

45.77 MHz Low Loss SAW Filter  
3.5 MHz Bandwidth



PART NUMBER :

**809-SL45.77M-03**

**OPERATING CONDITIONS / ELECTRICAL CHARACTERISTICS**

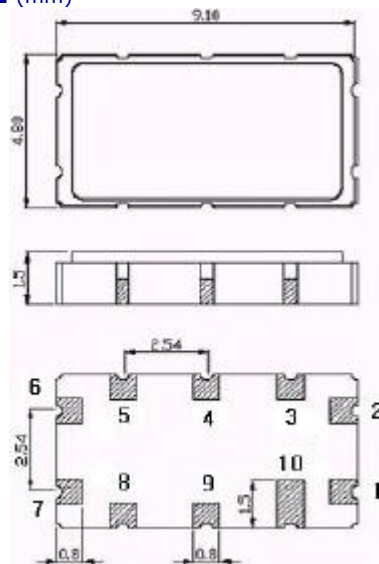
PARAMETERS	Minimum	Typical	Maximum	Units
Center Frequency	-	45.77	-	MHz
Insertion Loss at Fo	-	14.0	16.0	dB
-1.0 dB Bandwidth	2.5	2.7	-	MHz
-3.0 dB Bandwidth	3.2	3.5	-	MHz
-30.0 dB Bandwidth	-	6.2	6.7	MHz
Relative Attenuation 10 to 41.5 MHz	35	40	-	dB
Relative Attenuation 50 to 90 MHz	35	37	-	dB
Source Impedance (Single Ended)*	-	50	-	ohm
Load Impedance (Single Ended)*	-	50	-	ohm
Amplitude Ripple (Fo +/- 1 MHz)	-	0.7	1.0	dBp-p
Group Delay Variation (Fo +/- 1 MHz)	-	80	200	ns
Temperature Coefficient	-	-72	-	ppm/°C
Absolute Delay at Fo	-	0.88	-	µsec
IN/OUT VSWR at Fo	-	1.5	2.0	-

\* With Matching Network (Ref. Testing Environment Circuit as shown below)

Those impedances could be modified with different impedance values and/or structures, if necessary.

\*\* Custom SAW IF Filters available. Contact Oscilent for assistance.

**PACKAGE OUTLINE (mm)**



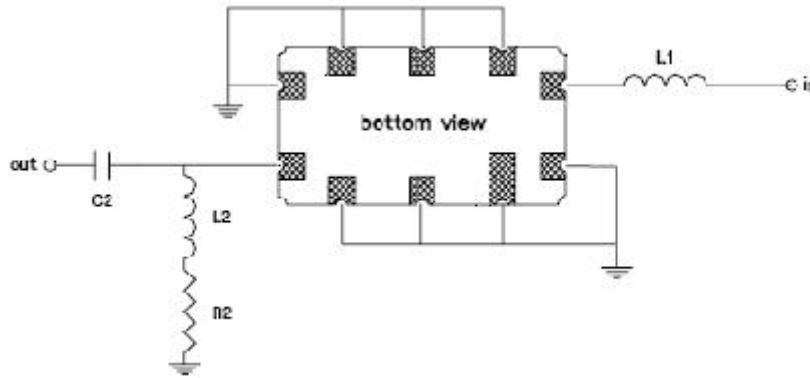
**PIN Descriptions**

INPUT – 2

OUTPUT – 7

GROUND - 1,3,4,5,6,8,9,10

**TEST CIRCUIT**



TEST FIXTURE AND VALUES/SOURCE AND LOAD IMPEDANCE 50 ohm

INPUT: L1: 820nH Q>40

OUTPUT: L2: 220 nH Q>40, C2: 82pF, R2 = 33 ohm

## FREQUENCY RESPONSE



**Oscilent Corporation** - CALL 949.252.0522

**Part No.:** 809-SL45.77M-03

18195 East McDermott Street, Building D, Irvine, CA 92614, USA  
 Fax: 949.252.0599, E-Mail: Sales@Oscilent.com