



Data Sheet



Product Category: IF SAW Filter

Part Number	Package	Application	Last Modified
805-SL482.0M-20	5.0 x 5.0 SMD	Communication	Jan. 01, 2007

TYPE :

IF SAW Filter

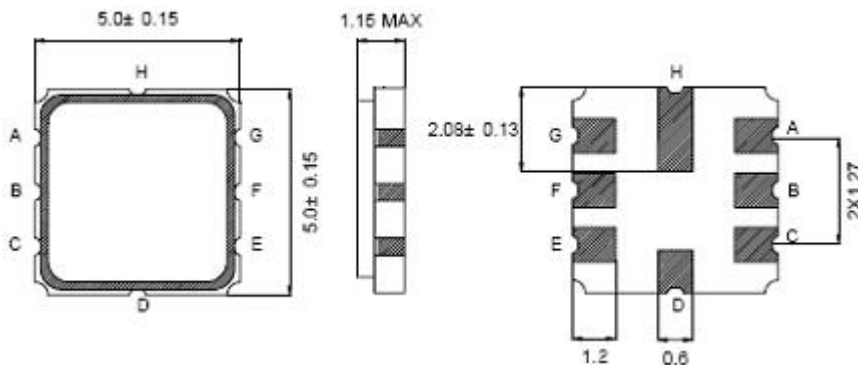
PART NUMBER :

**805-SL482.0M-20****OPERATING CONDITIONS / ELECTRICAL CHARACTERISTICS**

PARAMETERS	Condition	Minimum	Typical	Maximum	Units
Center Frequency (Fo)	-	-	482.0	-	MHz
Insertion Loss	@ Fo	-	8.7	12.0	dB
Relative Attenuation	Fo ± 15.0 MHz	5	8	-	dB
	Fo ± 140.0 MHz	40	45	-	
Bandwidth at -1.0 dB	-	22.5	23.0	-	MHz
Bandwidth at -3.0 dB	-	-	26.5	-	
Bandwidth at -40.0 dB	-	-	37.5	39.0	
Amplitude Ripple	472 ~ 492 MHz	-	0.8	1.0	dBp-p
Passband Phase Ripple	472 ~ 492 MHz	-	7	10	DEG.
Absolute Delay	@ Fo	-	0.35	-	µsec
Source Impedance (Balanced)*	-	-	100	-	ohm
Load Impedance (Balanced)*	-	-	100	-	ohm
Temperature Coefficient	-	-	-94	-	ppm/°C
Operating Temperature	-	-0	-	+50	°C
Storage Temperature	-	-35	-	+85	°C

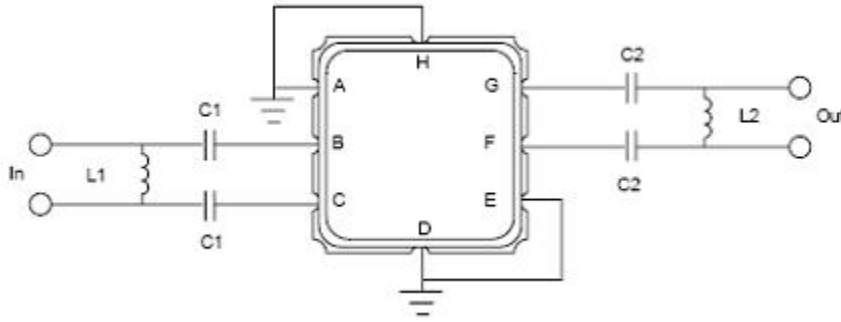
\* With Matching Network (Ref. Testing Environment Circuit as shown below)

\*\* Custom SAW IF Filters available. Contact Oscilent for assistance.

**PACKAGE OUTLINE (mm)**

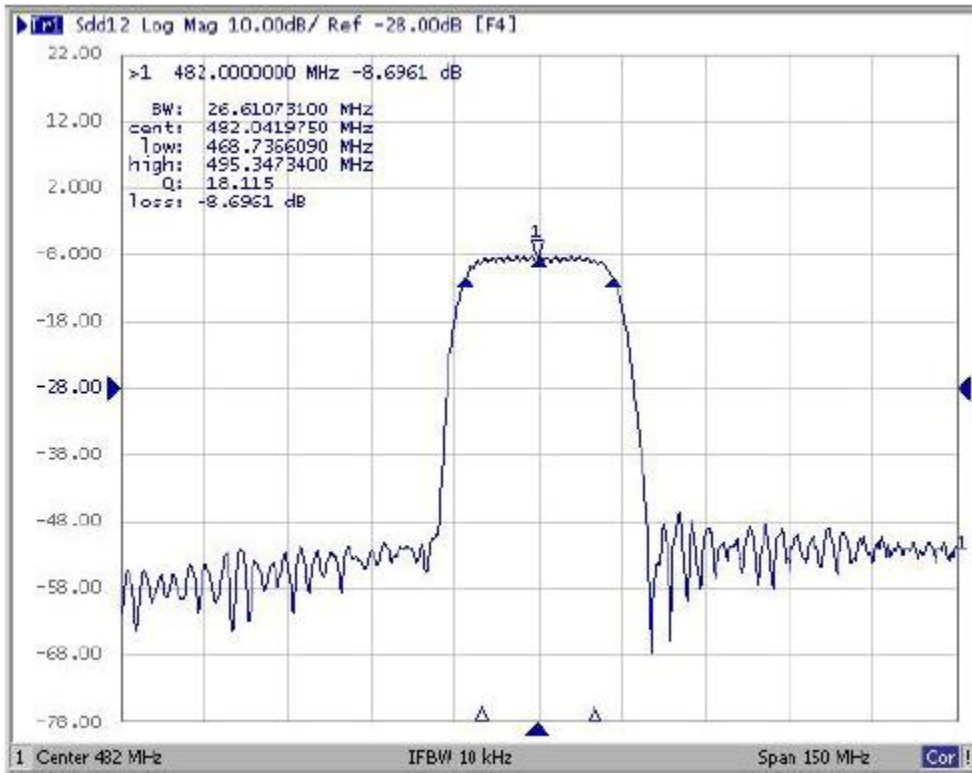
PIN LAYOUT	
A	Ground
B	In
C	In
D	Ground
E	Ground
F	Out
G	Out
H	Ground

**TEST FIXTURE**



L1 = 18nH                      C1 = 27pF  
 L2 = 12nH                      C2 = 36pF  
 Source/Load Impedance = 100 ohms

**FREQUENCY RESPONSE**



**Oscilent Corporation** - CALL **949.252.0522**  
 18195 East McDermott Street , Building D , Irvine , CA 92614 , USA  
 Fax: 949.252.0599 , E-Mail: Sales@Oscilent.com

**Part No.:** 805-SL482.0M-20