



# PRODUCT SPECIFICATION

REV A January 2011

Oscilent Controlled Document

Ordering Code / Part Number	Product Description
867-SL201.0M-11A	01.0 MHz IF SAW Filter 11.35 MHz Bandwidth

## Specification Contents

- o Mechanical Dimensions
- o Test Circuit
- o Maximum Ratings
- o Electrical Specification
- o Frequency Response
- o Smith Chart
- o VSWR

## Notes

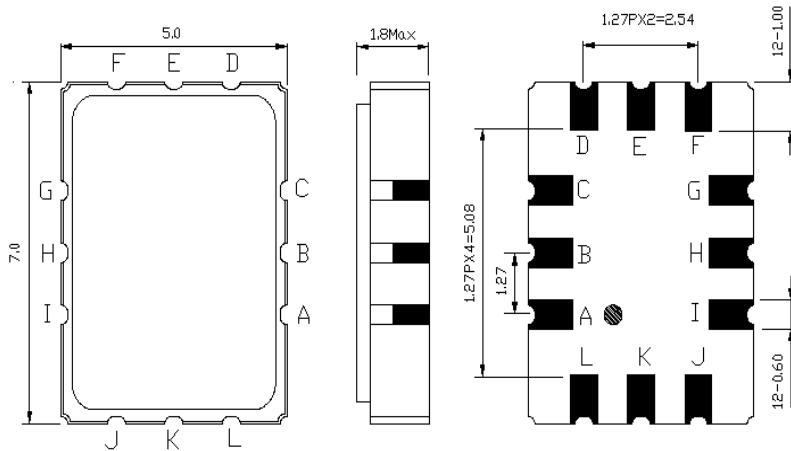
- o Electrostatic Sensitive Device (ESD) 
- o Avoid excessive ultrasonic exposure
- o Solderability compatible with JEDEC J-STD-020C Pb-free process, 260°C peak reflow temperature
- o This product complies with EU directive 2002/95/EC (RoHS compliance)



Oscilent Corporation  
Telephone: 1.949.252.0522  
Fax: 1.949.252.0522  
Email: sales@oscilent.com

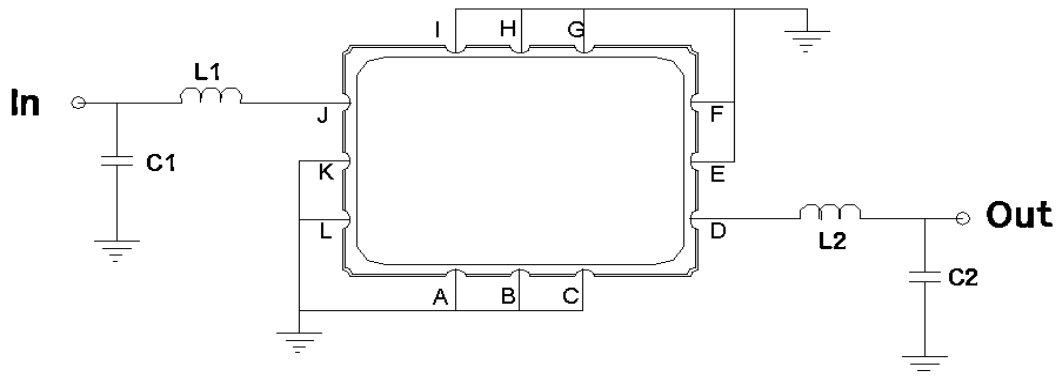


## Mechanical Dimensions (mm)



Pin Description	
A, B, C, E, F, G, H, I, K, L	Ground
J	Input
D	Output

## Test Circuit



Test Fixture & Values	
Input	L1=33 nH, C1=33 pF
Output	L1=33 nH, C2=33 pF
Source/Load Impedance	50 Ω

**Maximum Ratings**

Parameters Description	Unit	Minimum	Typical	Maximum
Operating Temperature Range	°C	-30	-	+80
Storage Temperature Range	°C	-40	-	+85
Maximum DC Voltage	V	-	-	10
Maximum Input Power	dBm	-	-	10
Source Impedance (single ended) <sup>(1)</sup>	Ω	-	50	-
Load Impedance (single ended) <sup>(1)</sup>	Ω	-	50	-

Notes: With Matching Network (Ref. Testing Environment Circuit as shown above).

Those impedances could be modified with different impedance values and/or structures, if necessary.

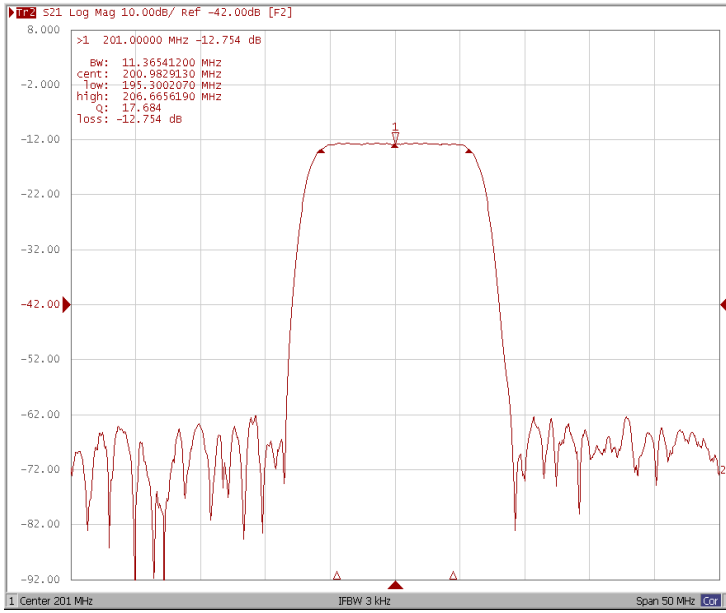
**Electrical Specification**

Parameters Description	Unit	Minimum	Typical	Maximum
Center Frequency (Fo)	MHz	200.75	201.0	201.25
Insertion Loss at Fo	dB	-	12.70	15.0
Amplitude Ripple Variation at Fo ± 4.5 MHz	dB <sub>p-p</sub>	-	0.3	0.8
Group Delay Variation at Fo ± 4.5 MHz	nsec	-	40	80
Absolute Delay at Fo	μsec	-	0.69	-
Temperature Coefficient	ppm/°C	-	-18	-
Bandwidth at -1.0 dB	MHz	11.00	11.35	-
Bandwidth at -3.0 dB	MHz	-	12.50	-
Bandwidth at -40.0 dB	MHz	-	16.75	17.20
Relative Attenuation				
Lower Sidelobe	dB	40	50	-
Upper Sidelobe	dB	40	50	-

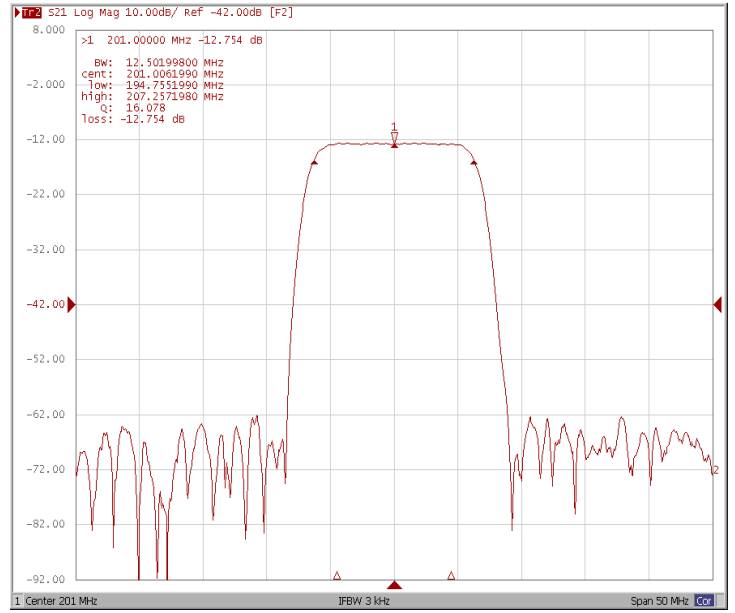


## Frequency Response

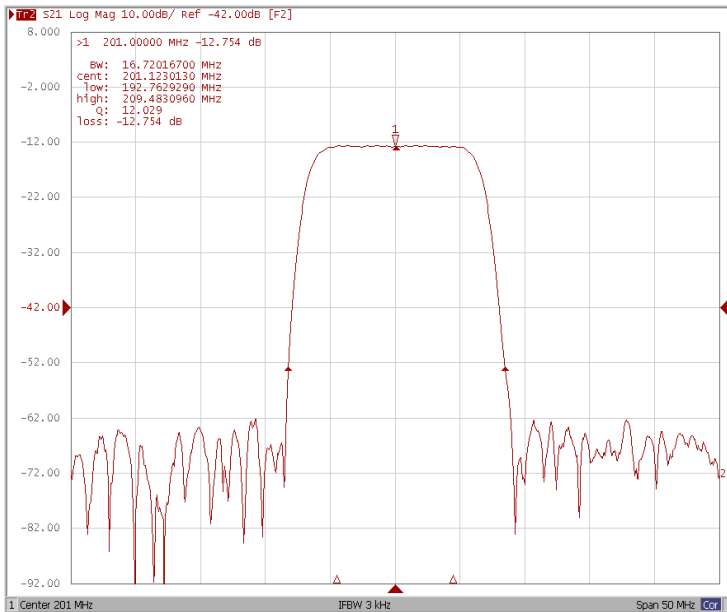
### Bandwidth at -1.0 dB



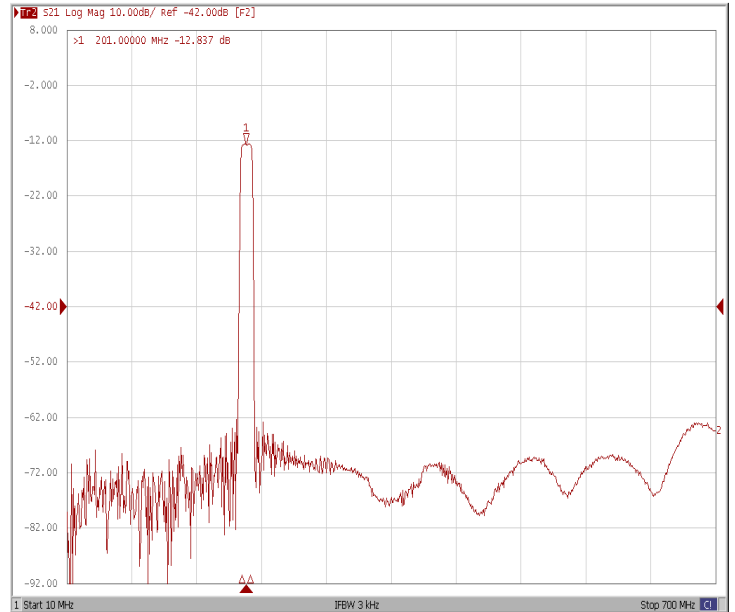
### Bandwidth at -3.0 dB



### Bandwidth at -40.0 dB

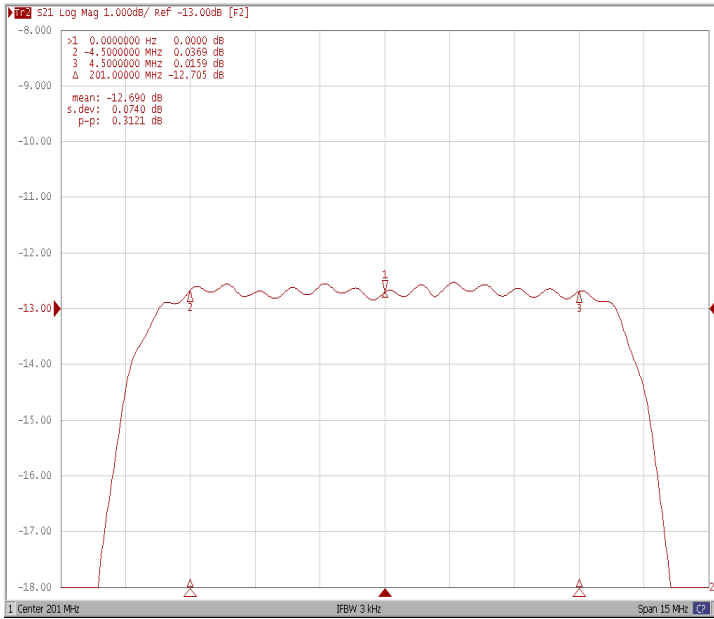


### Wide-Band

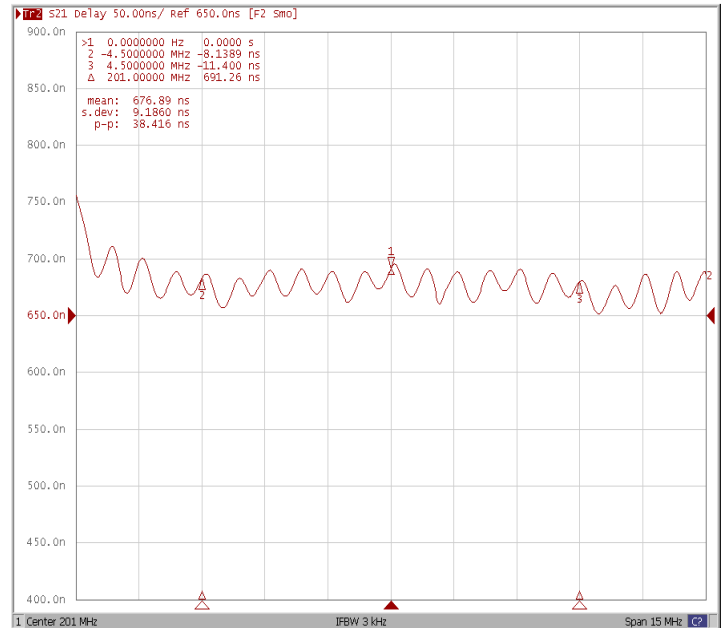




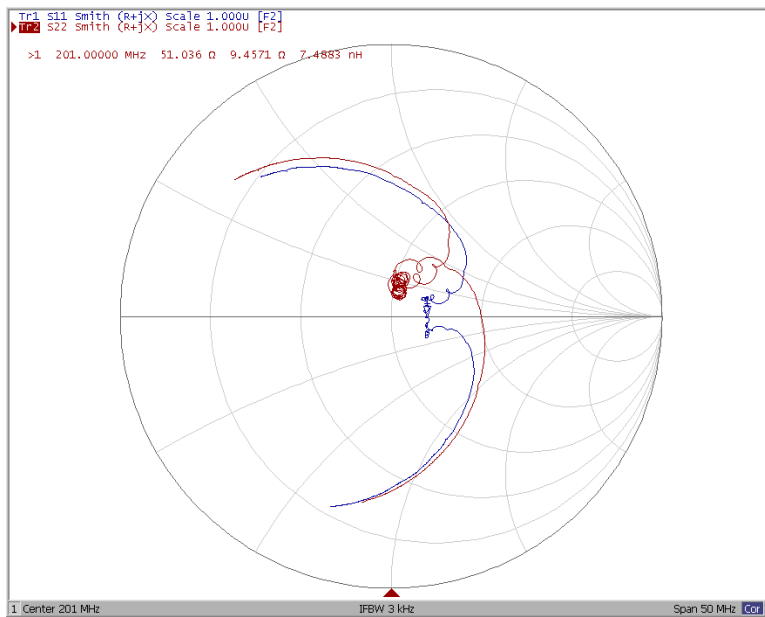
### Ripple Variation Fo±4.5MHz



### Group Delay Variation Fo±4.5MHz



### Smith Chart





## VSWR

