



PRODUCT SPECIFICATION

REV A January 2011

Oscilent Controlled Document

Ordering Code / Part Number	Product Description
835-IF198.5M-05A	198.5 MHz IF SAW Filter 5.15MHz Bandwidth

Specification Contents

- o Mechanical Dimensions
- o Test Circuit
- o Maximum Ratings
- o Electrical Specification
- o Frequency Response
- o Smith Chart
- o VSWR

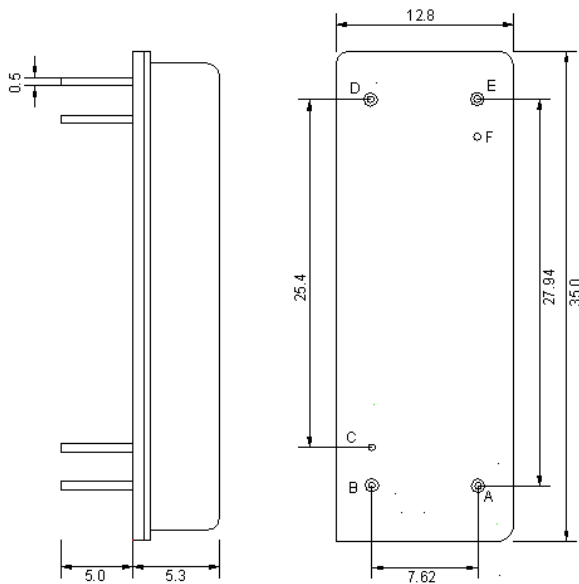
Notes

- o Electrostatic Sensitive Device (ESD) 
- o Avoid excessive ultrasonic exposure
- o Solderability compatible with JEDEC J-STD-020C Pb-free process, 260°C peak reflow temperature
- o This product complies with EU directive 2002/95/EC (RoHS compliance)



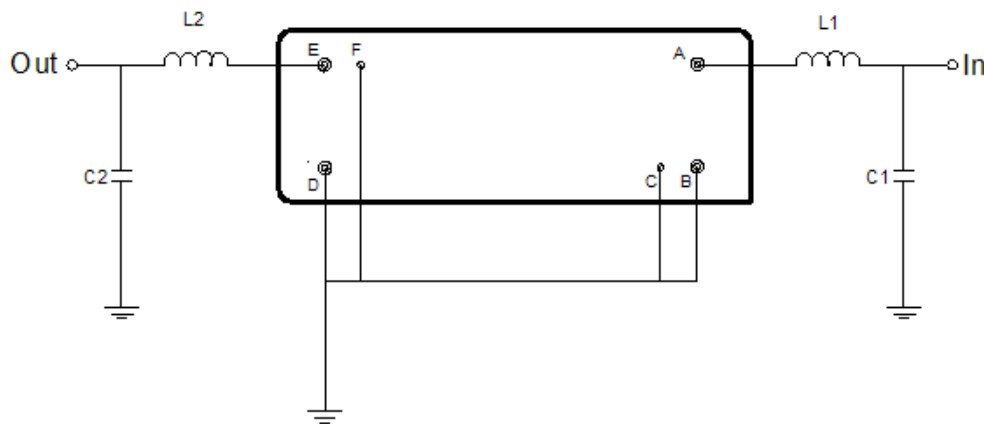


Mechanical Dimensions (mm)



Pin Description	
B, C, D, F	Ground
A	In
E	Out

Test Circuit



Test Fixture & Values	
Input	L1=27nH,C1=27pF
Output	L2=22nH,C2=43pF
Source/Load Impedance	50 Ω



Maximum Ratings

Parameters Description	Unit	Minimum	Typical	Maximum
Operating Temperature Range	°C	-20	-	70
Storage Temperature Range	°C	-25	-	70
Maximum DC Voltage	V	-	-	15
Maximum Input Power	dBm	-	-	10
Source Impedance (single ended) ⁽¹⁾	Ω	-	50	-
Load Impedance (single ended) ⁽¹⁾	Ω	-	50	-

Notes: With Matching Network (Ref. Testing Environment Circuit as shown above).

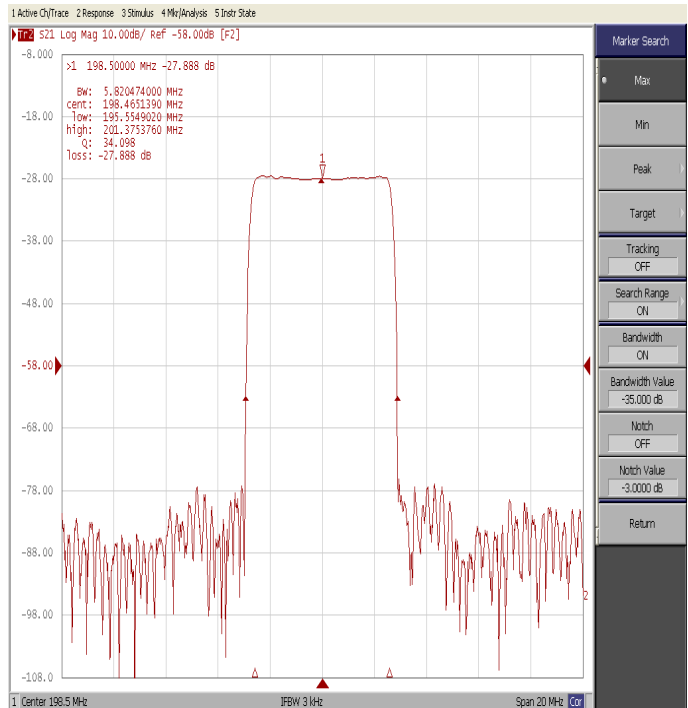
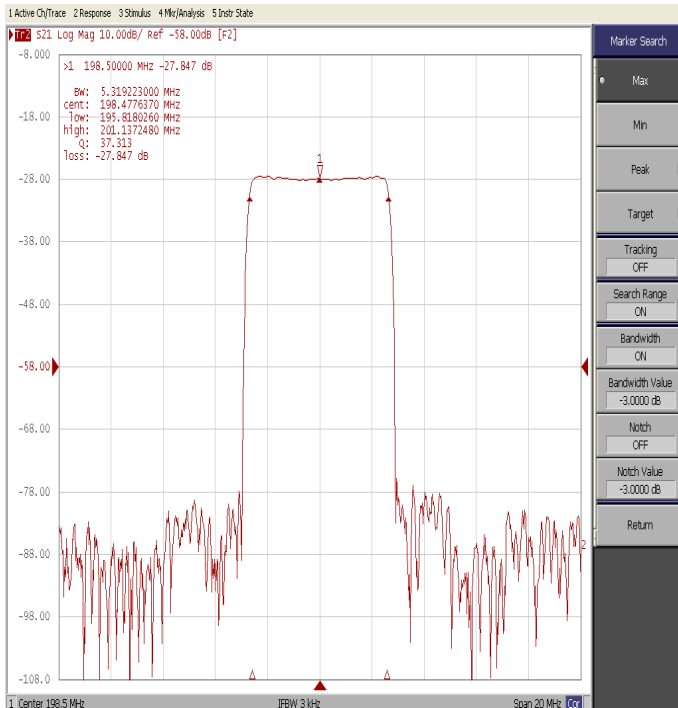
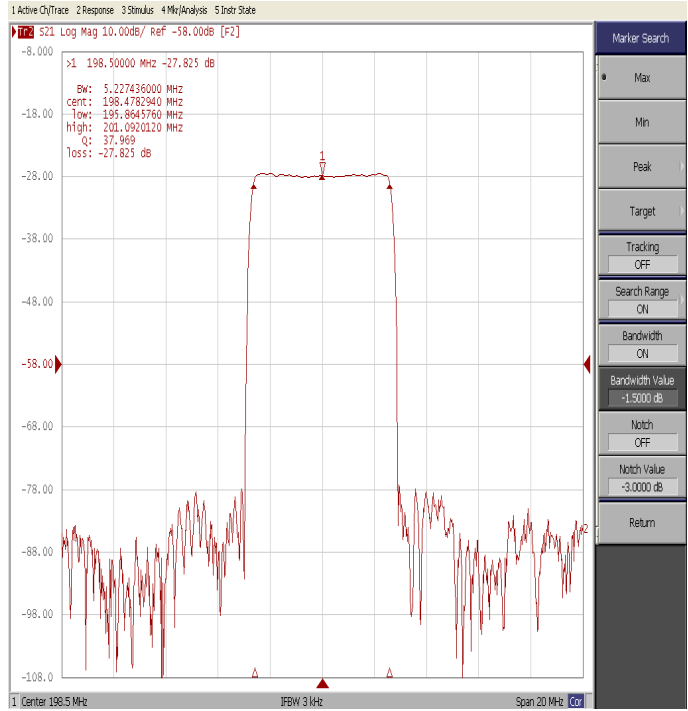
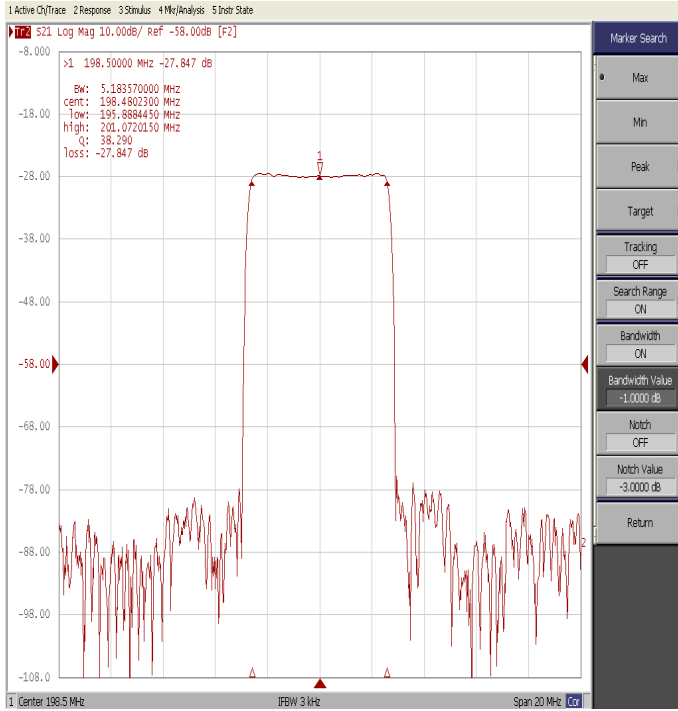
Those impedances could be modified with different impedance values and/or structures, if necessary.

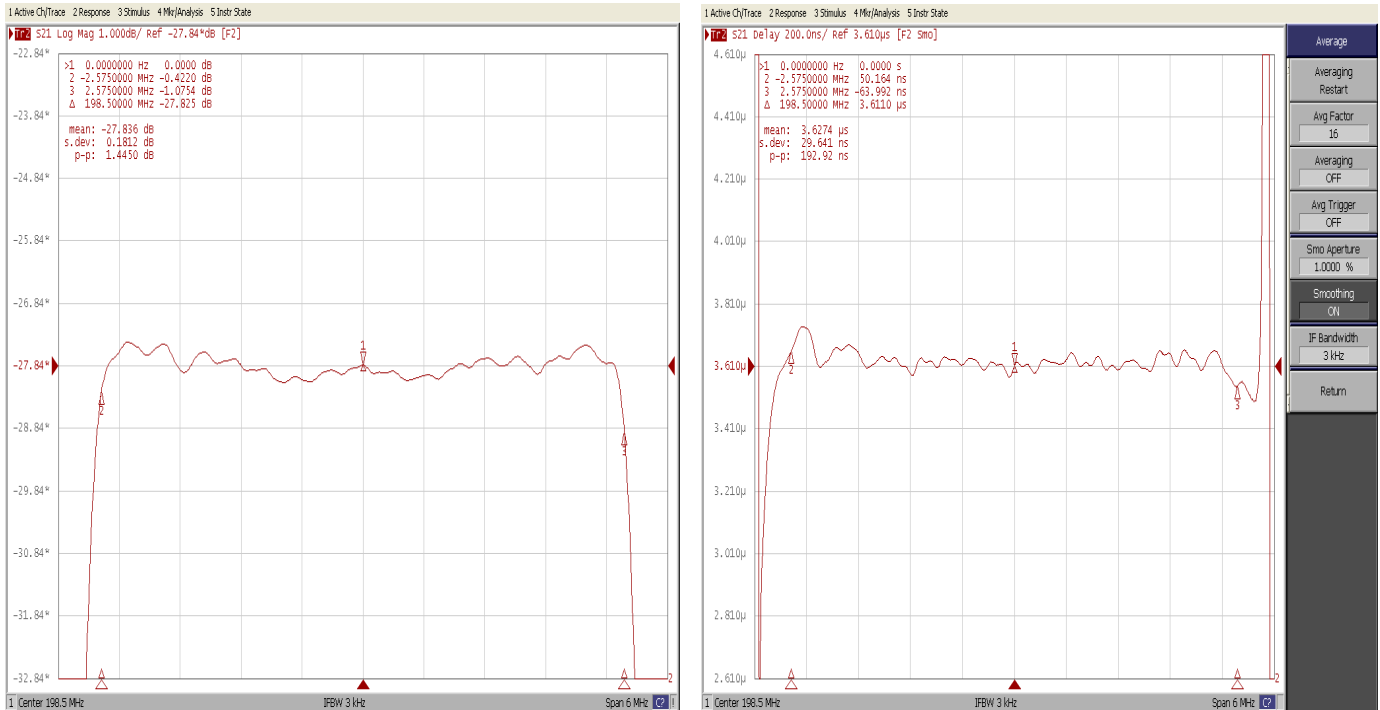
Electrical Specification

Parameters Description	Unit	Minimum	Typical	Maximum
Center Frequency (Fo)	MHz	198.42	198.50	198.58
Insertion Loss at Fo	dB	-	28.0	29.5
Amplitude Ripple Variation ($\Delta F_{o\pm 2.575\text{MHz}}$)	dB _{p-p}	-	1.5	-
Group Delay Variation ($\Delta F_{o\pm 2.575\text{MHz}}$)	nsec	-	200	300
Absolute Delay at Fo	μsec	-	3.65	-
Temperature Coefficient	ppm/°C	-	-0.03	-
Bandwidth at -1.0 dB	MHz	5.10	5.18	-
Bandwidth at -1.5 dB	MHz	-	5.22	-
Bandwidth at -3.0 dB	MHz	-	5.31	-
Bandwidth at -35.0 dB	MHz	-	5.82	5.90
Bandwidth at -40.0 dB	MHz	-	5.84	-
Ultimate Rejection	dB	45	48	-

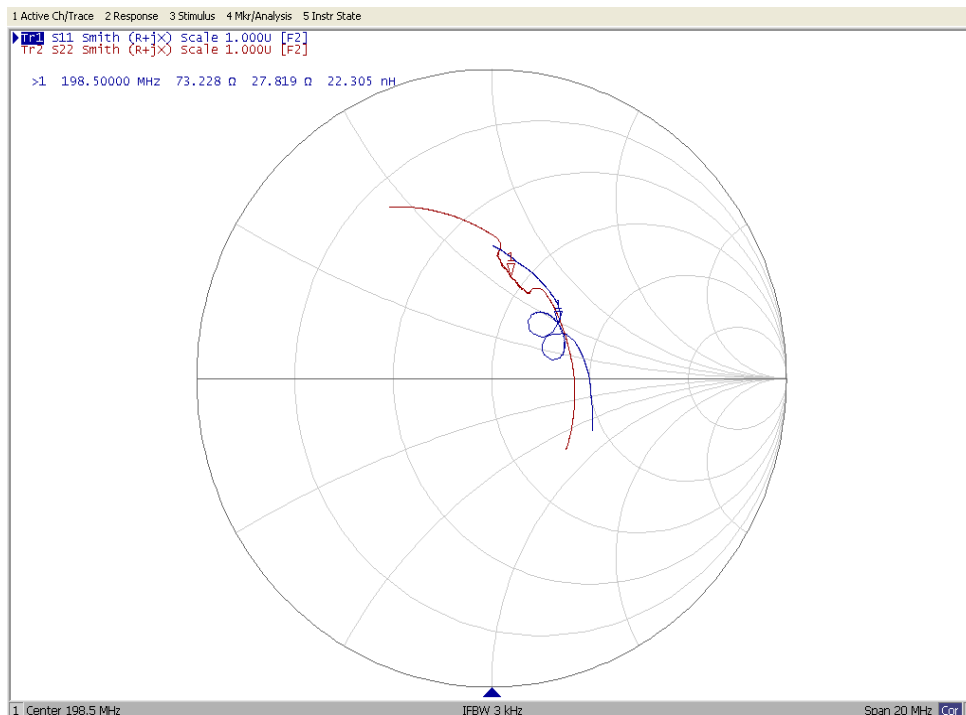


Frequency Response





Smith Chart





VSWR

