



REV A January 2011

Oscilent Controlled Document

Ordering Code / Part Number	Product Description
821-IF80.1M-20B	80.1 MHz IF SAW Filter 20.10 MHz Bandwidth

Specification Contents

- o Mechanical Dimensions
- o Test Circuit
- o Maximum Ratings
- o Electrical Specification
- o Frequency Response
- o Smith Chart
- o VSWR

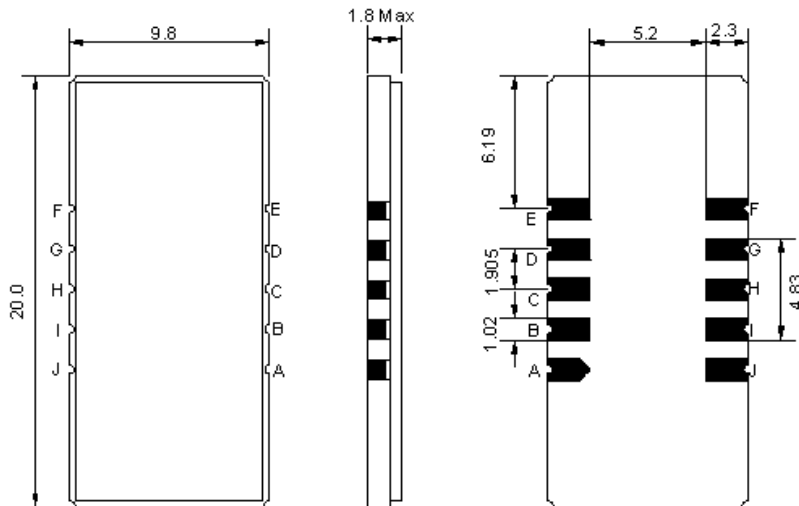
Notes

- o Electrostatic Sensitive Device (ESD) 
- o Avoid excessive ultrasonic exposure
- o Solderability compatible with JEDEC J-STD-020C Pb-free process, 260°C peak reflow temperature
- o This product complies with EU directive 2002/95/EC (RoHS compliance)



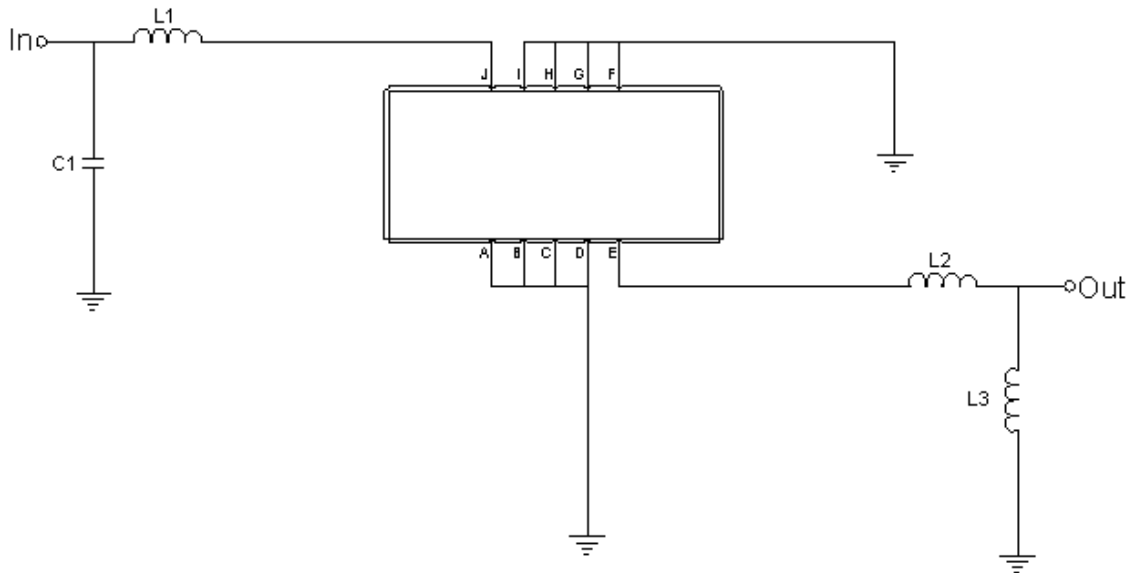


Mechanical Dimensions (mm)



Pin Description	
A, B, C, D, F, G, H, I	Ground
J	Input
E	Output

Test Circuit



Test Fixture & Values	
Input	$L1=150\text{nH}$, $C1=13\text{pF}$
Output	$L2=56\text{nH}$, $C2=100\text{nH}$
Source/Load Impedance	$50\ \Omega$

**Maximum Ratings**

Parameters Description	Unit	Minimum	Typical	Maximum
Operating Temperature Range	°C	-30	-	80
Storage Temperature Range	°C	-30	-	80
Maximum DC Voltage	V	-	-	10
Maximum Input Power	dBm	-	-	10
Source Impedance (single ended) ⁽¹⁾	Ω	-	50	-
Load Impedance (single ended) ⁽¹⁾	Ω	-	50	-

Notes: With Matching Network (Ref. Testing Environment Circuit as shown above).

Those impedances could be modified with different impedance values and/or structures, if necessary.

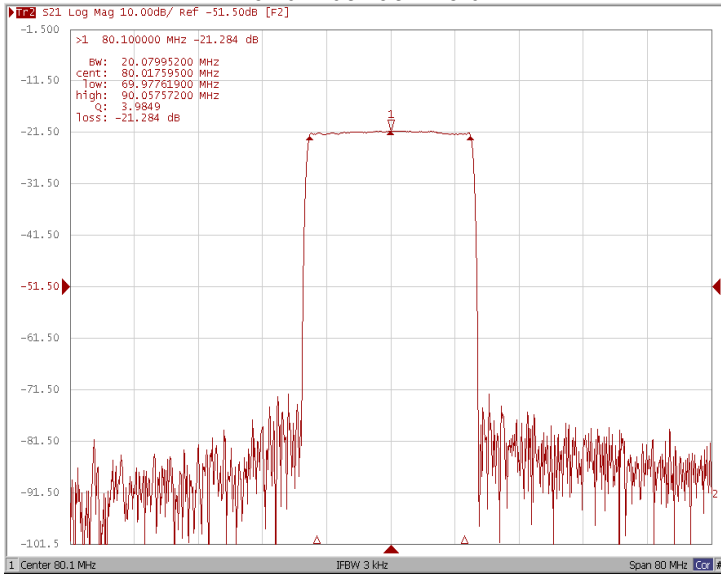
Electrical Specification

Parameters Description	Unit	Minimum	Typical	Maximum
Center Frequency (Fo)	MHz	79.95	80.10	80.25
Insertion Loss at Fo	dB	-	21.3	23.0
Group Delay Variation (Fo±9.22MHz)	ns	-	35	60
Absolute Delay	us	-	2.38	-
Passband Ripple (Fo±9.22MHz)	dB	-	0.75	1.00
Bandwidth at -1dB	MHz	19.30	20.10	-
Bandwidth at -3dB	MHz	-	20.45	-
Bandwidth at -20dB	MHz	-	21.36	21.56
Bandwidth at -40dB	MHz	-	21.80	-
Ultimate Rejection	dB	50	52	-
Temperature coefficient	ppm/°C	-	-72	-

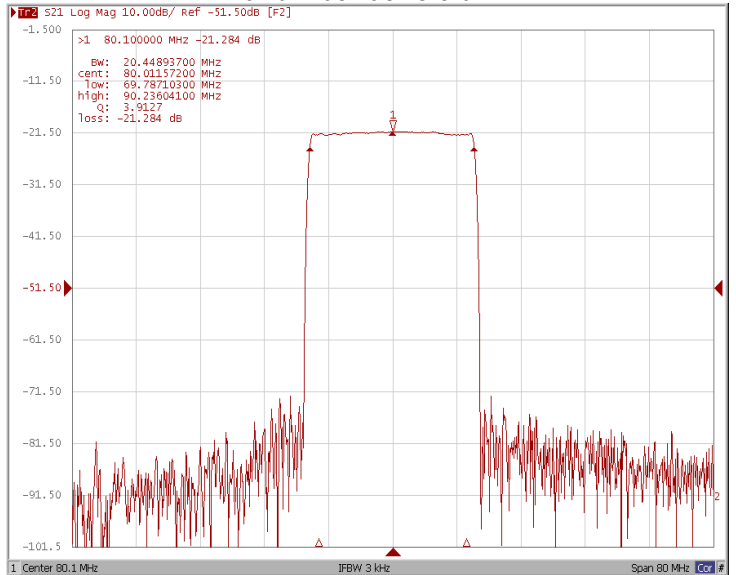


Frequency Response

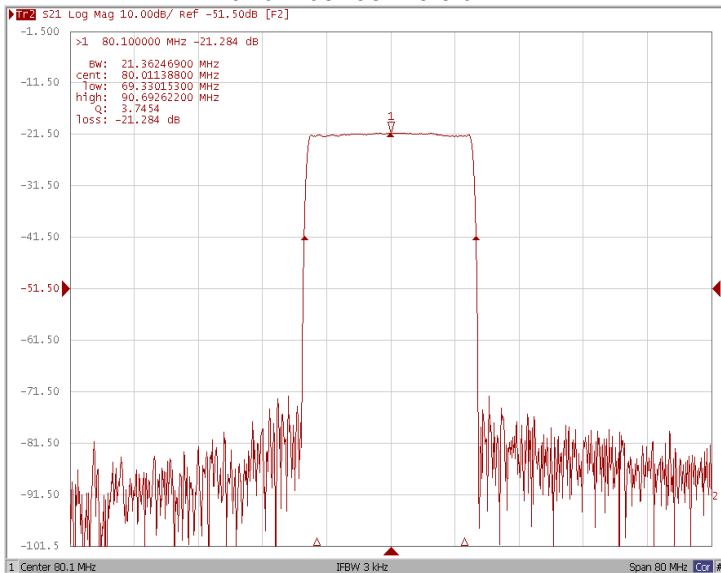
Bandwidth at -1.0 dB



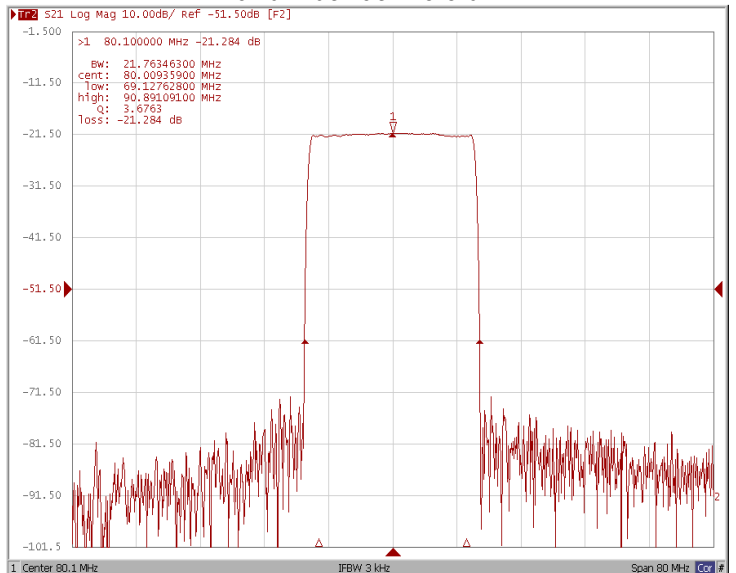
Bandwidth at -3.0 dB



Bandwidth at -20.0 dB



Bandwidth at -40.0 dB

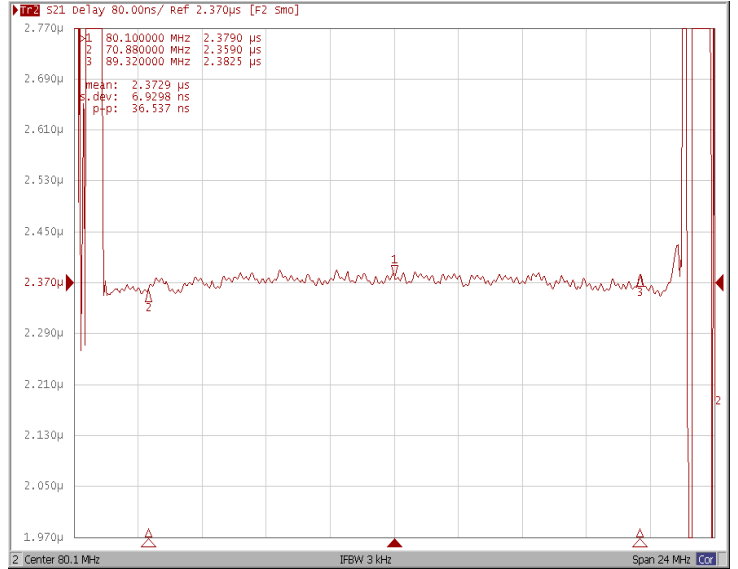




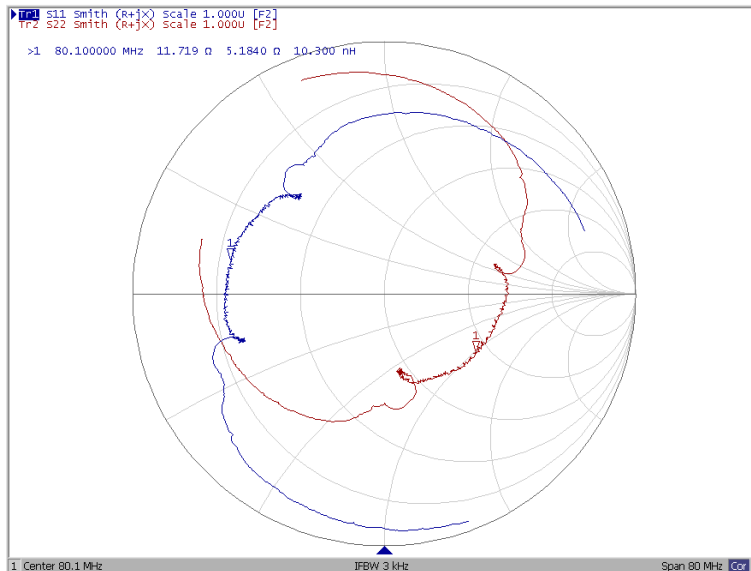
Ripple Variation Fo±9.22MHz



Group Delay Variation Fo±9.22MHz



Smith Chart





VSWR

