



REV A January 2011

Oscilent Controlled Document

Ordering Code / Part Number	Product Description
821-IF80.0M-20A	80.0 MHz IF SAW Filter 20.20 MHz Bandwidth

### Specification Contents

- o Mechanical Dimensions
- o Test Circuit
- o Maximum Ratings
- o Electrical Specification
- o Frequency Response
- o Smith Chart
- o VSWR

### Notes

- o Electrostatic Sensitive Device (ESD) 
- o Avoid excessive ultrasonic exposure
- o Solderability compatible with JEDEC J-STD-020C Pb-free process, 260°C peak reflow temperature
- o This product complies with EU directive 2002/95/EC (RoHS compliance)



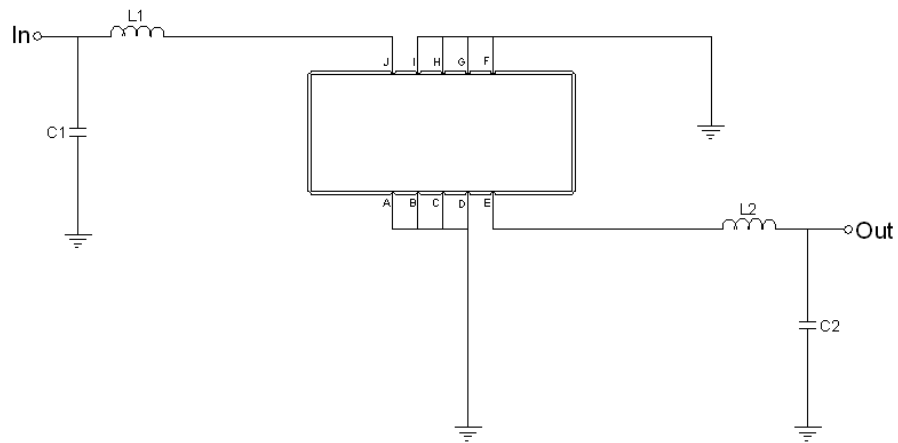


## Mechanical Dimensions (mm)



Pin Description	
A, B, C, D, F, G, H, I	Ground
J	Input
E	Output

## Test Circuit



Test Fixture & Values	
Input	L1=120nH, C1=8.2pF
Output	L2=120nH, C2=15pF
Source/Load Impedance	50 Ω

**Maximum Ratings**

Parameters Description	Unit	Minimum	Typical	Maximum
Operating Temperature Range	°C	0	-	60
Storage Temperature Range	°C	-30	-	80
Maximum DC Voltage	V	-	-	10
Maximum Input Power	dBm	-	-	10
Source Impedance (single ended) <sup>(1)</sup>	Ω	-	50	-
Load Impedance (single ended) <sup>(1)</sup>	Ω	-	50	-

Notes: With Matching Network (Ref. Testing Environment Circuit as shown above).

Those impedances could be modified with different impedance values and/or structures, if necessary.

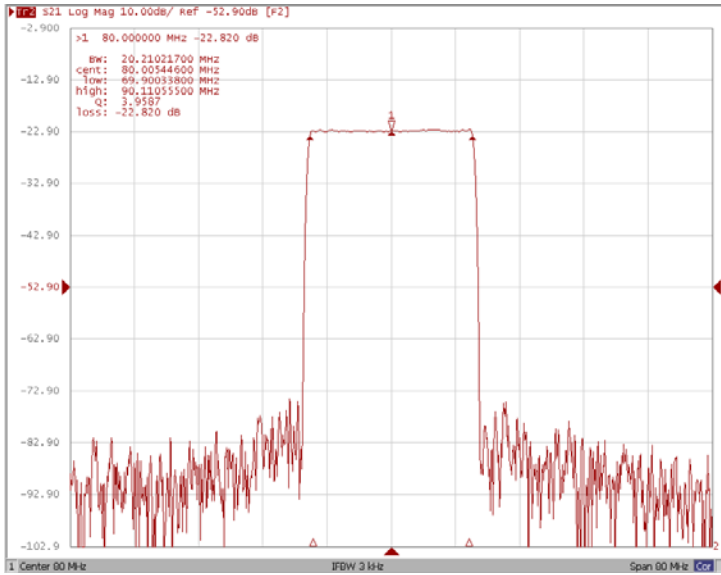
**Electrical Specification**

Parameters Description	Unit	Minimum	Typical	Maximum
Center Frequency (Fo)	MHz	-	80.0	-
Insertion Loss at Fo	dB	-	23.0	25.0
Group Delay Variation (Fo±9.75MHz)	ns	-	36	80
Absolute Delay	us	-	2.38	-
Passband Ripple (Fo±9.75MHz)	dB	-	0.50	1.00
Bandwidth at -1dB	MHz	-	20.20	-
Bandwidth at -3dB	MHz	-	20.50	-
Bandwidth at -40dB	MHz	-	21.80	-
Ultimate Rejection	dB	-	52	-
Temperature coefficient	ppm/°C	-	-72	-

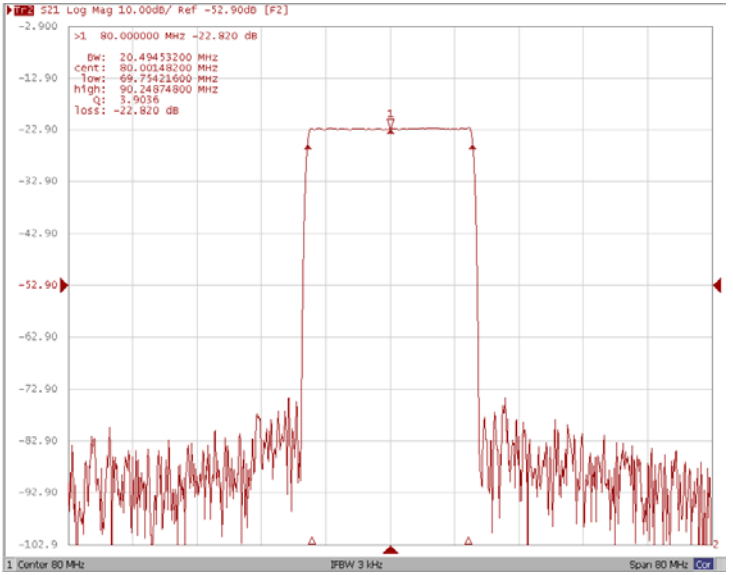


## Frequency Response

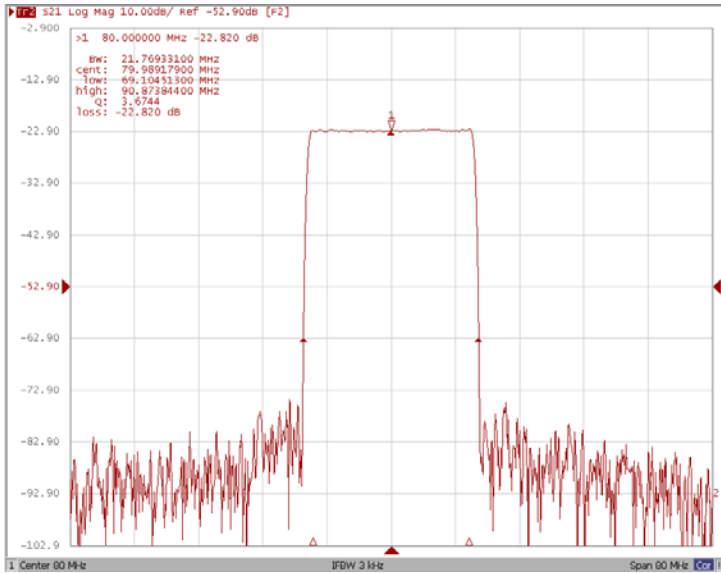
### Bandwidth at -1.0 dB



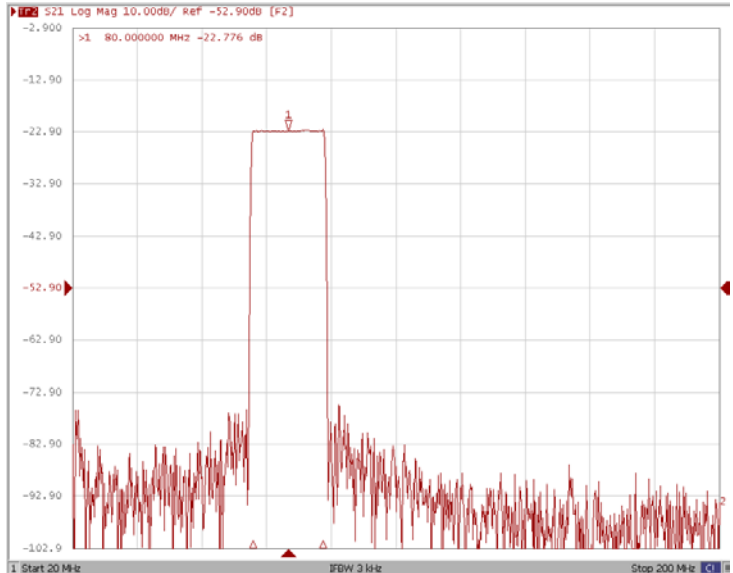
### Bandwidth at -3.0 dB



### Bandwidth at -40.0 dB

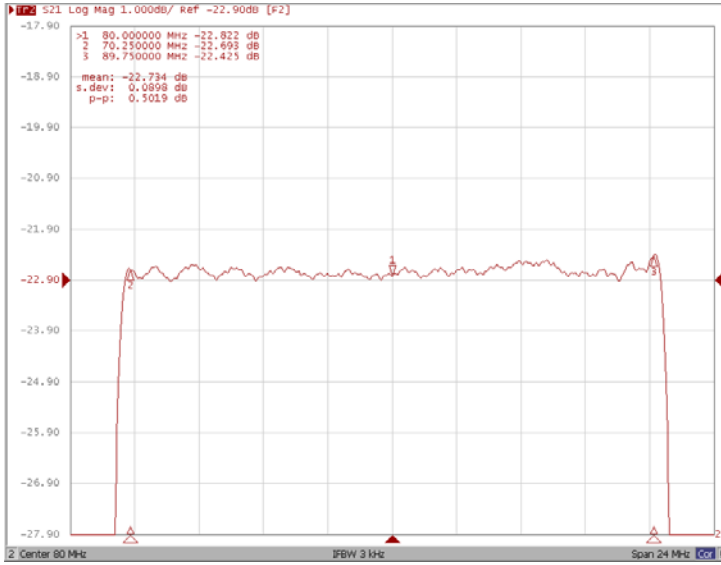


### Wide Band

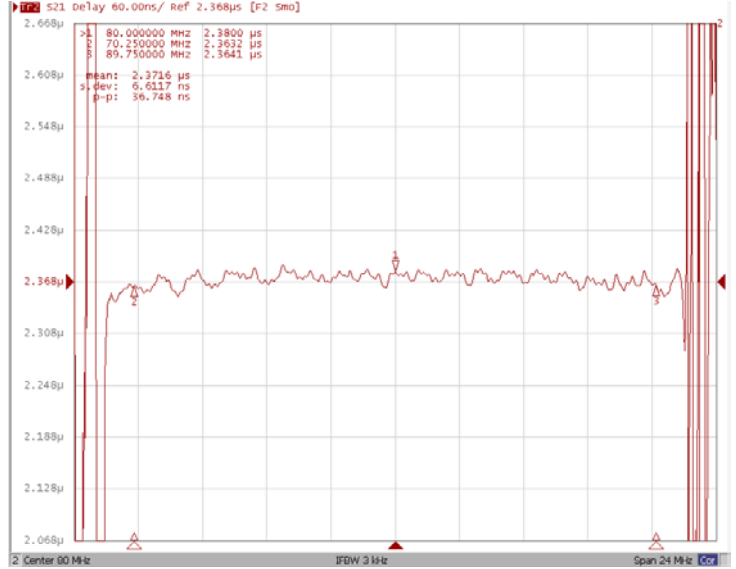




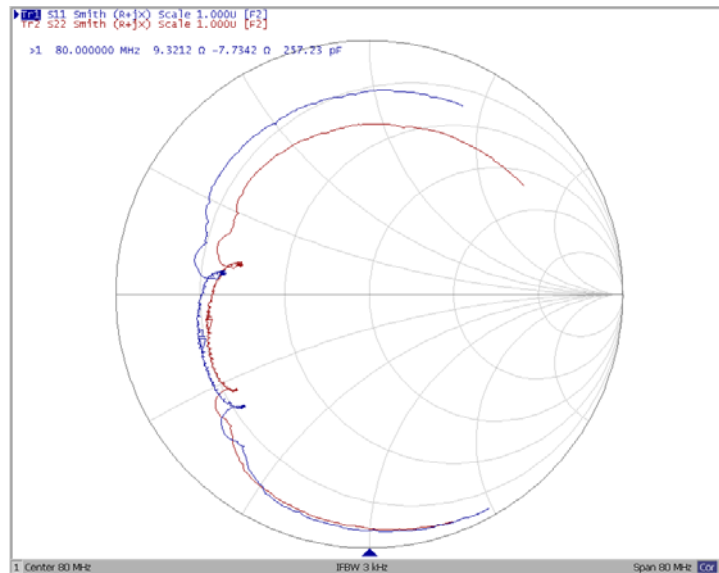
### Ripple Variation Fo±9.75MHz



### Group Delay Variation Fo±9.75MHz



### Smith Chart





## VSWR

