



REV A January 2011

Oscilent Controlled Document

Ordering Code / Part Number	Product Description
821-SL75.0M-40B	75.0 MHz IF SAW Filter 40.60 MHz Bandwidth

Specification Contents

- o Mechanical Dimensions
- o Test Circuit
- o Maximum Ratings
- o Electrical Specification
- o Frequency Response
- o Smith Chart
- o VSWR

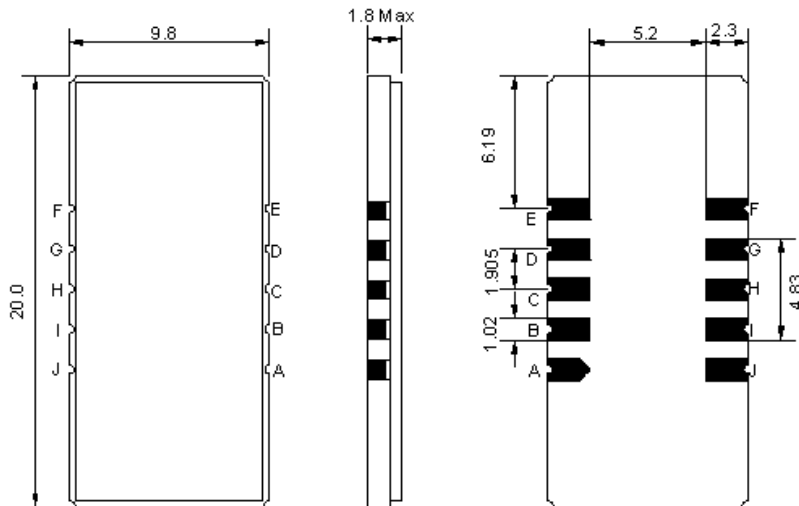
Notes

- o Electrostatic Sensitive Device (ESD) 
- o Avoid excessive ultrasonic exposure
- o Solderability compatible with JEDEC J-STD-020C Pb-free process, 260°C peak reflow temperature
- o This product complies with EU directive 2002/95/EC (RoHS compliance)



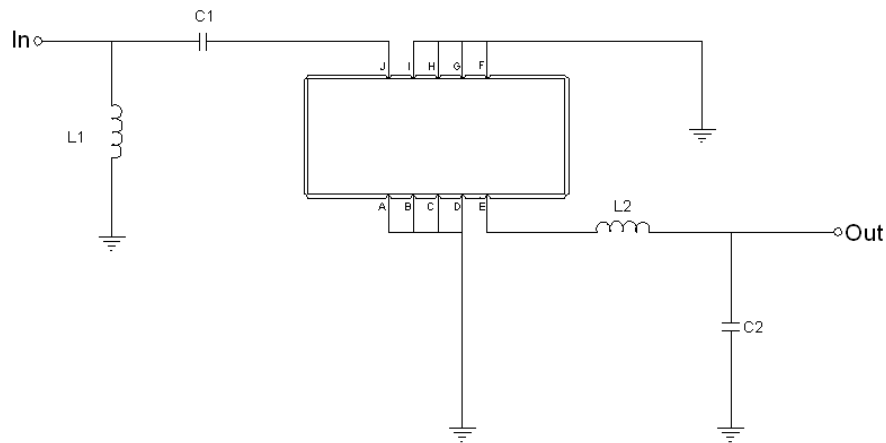


Mechanical Dimensions (mm)



Pin Description	
A, B, C, D, F, G, H, I	Ground
J	Input
E	Output

Test Circuit



Test Fixture & Values	
Input	L1 = 56 nH, C1 = 220 pF
Output	L2 = 150 nH, C2 = 27 pF
Source/Load Impedance	50 Ω

**Maximum Ratings**

Parameters Description	Unit	Minimum	Typical	Maximum
Operating Temperature Range	°C	-	25	-
Storage Temperature Range	°C	-40	-	85
Maximum DC Voltage	V	-	-	10
Maximum Input Power	dBm	-	-	10
Source Impedance (single ended) ⁽¹⁾	Ω	-	50	-
Load Impedance (single ended) ⁽¹⁾	Ω	-	50	-

Notes: With Matching Network (Ref. Testing Environment Circuit as shown above).

Those impedances could be modified with different impedance values and/or structures, if necessary.

Electrical Specification

Parameters Description	Unit	Minimum	Typical	Maximum
Center Frequency (Fo)	MHz	-	75.0	-
Insertion Loss at Fo	dB	-	27.00	28.50
Group Delay Variation at Fo ± 19.40 MHz	nsec	-	28	60
Absolute Delay at Fo	usec	-	1.50	-
Passband Ripple Variation at Fo ± 19.40 MHz	dB	-	0.60	1.0
Bandwidth at -1dB	MHz	-	40.60	-
Bandwidth at -3dB	MHz	41.00	41.35	-
Bandwidth at -20dB	MHz	-	43.50	43.85
Bandwidth at -40dB	MHz	-	44.66	44.95
Ultimate Rejection	dB	-	45	-
Temperature Coefficient	ppm/°C	-	-86	-



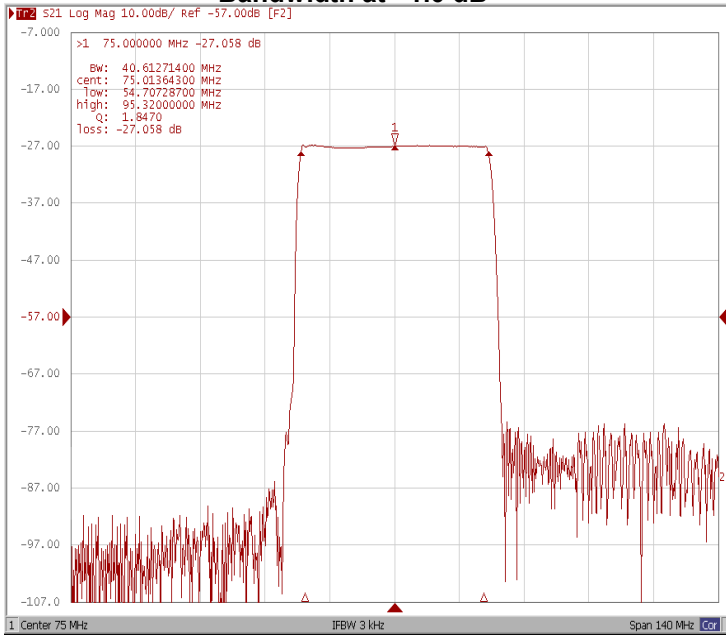
January 2011 Rev A

Oscilent Part Number
821-SL75.0M-40B

75.0 MHz IF SAW Filter 40.60 MHz Bandwidth

Frequency Response

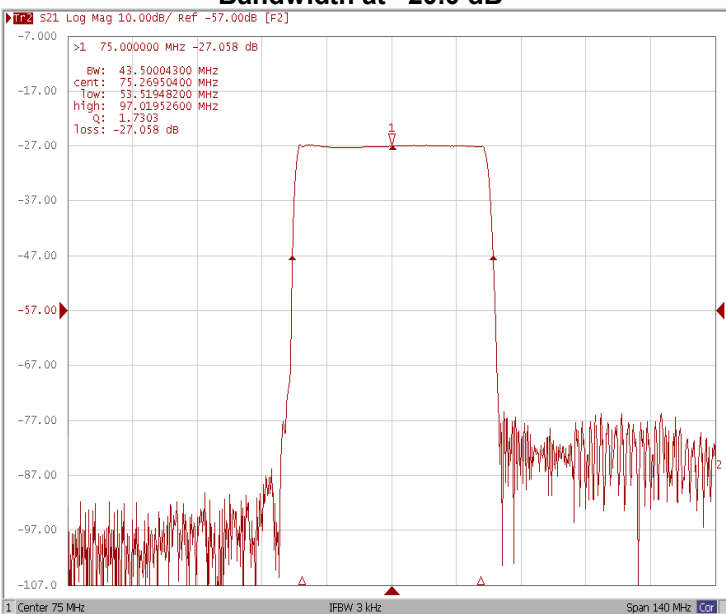
Bandwidth at -1.0 dB



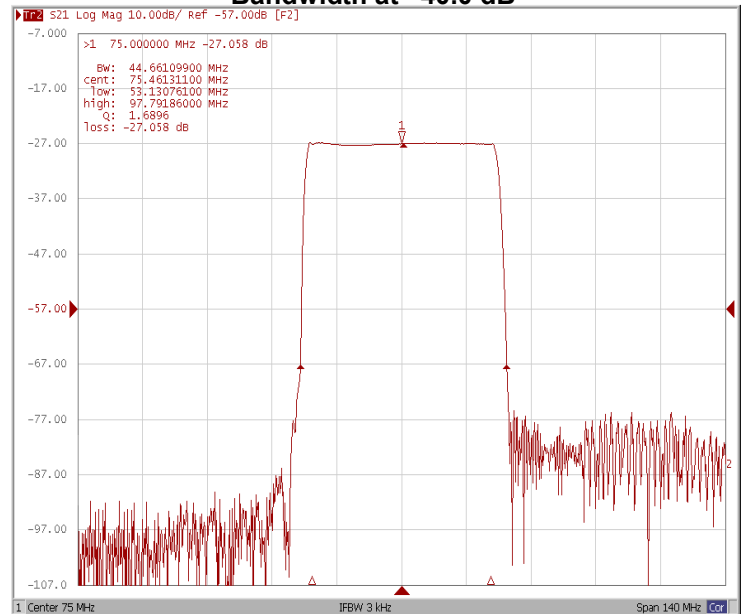
Bandwidth at -3.0 dB



Bandwidth at -20.0 dB

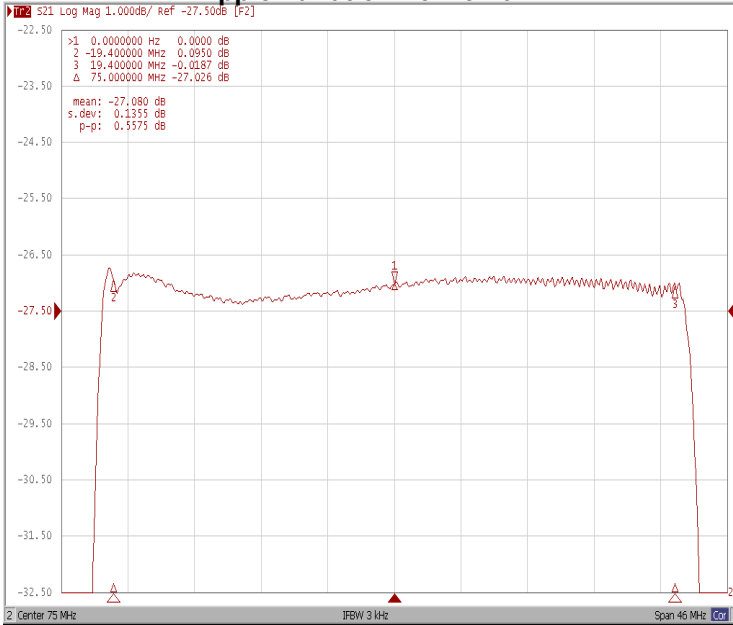


Bandwidth at -40.0 dB

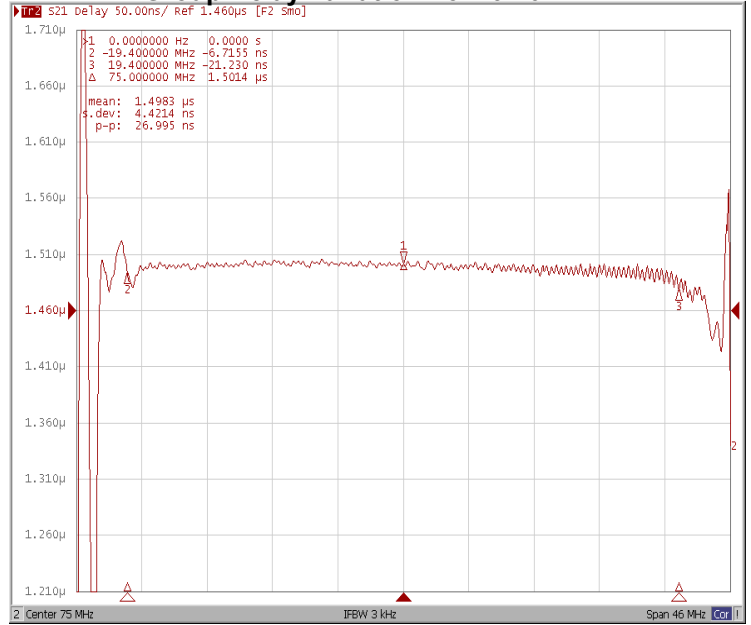




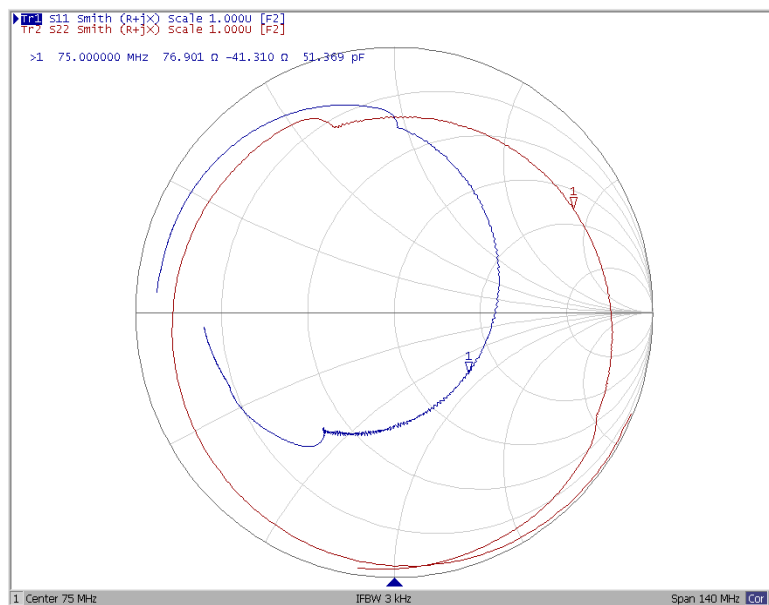
Ripple Variation Fo±19.40MHz



Group Delay Variation Fo±19.40MHz



Smith Chart





VSWR

