



REV A January 2011

Oscilent Controlled Document

Ordering Code / Part Number	Product Description
821-SL145.0M-26A	145.0 MHz IF SAW Filter 27.0 MHz Bandwidth

Specification Contents

- o Mechanical Dimensions
- o Test Circuit
- o Maximum Ratings
- o Electrical Specification
- o Frequency Response
- o Smith Chart
- o VSWR

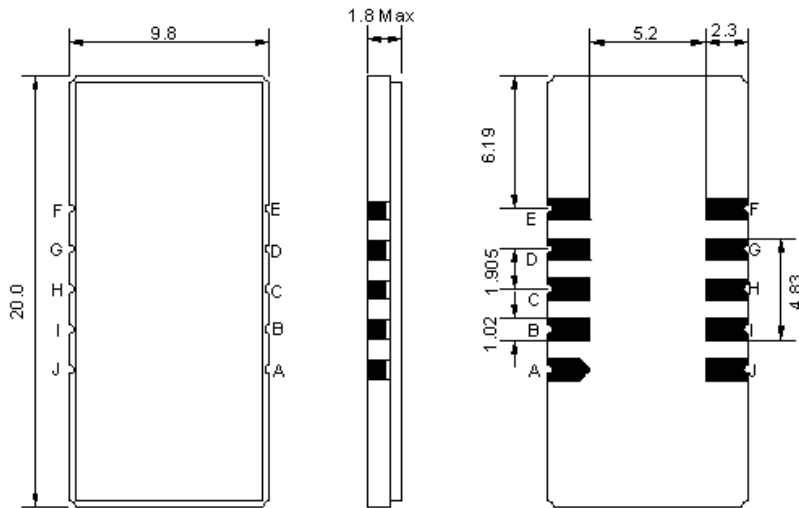
Notes

- o Electrostatic Sensitive Device (ESD) 
- o Avoid excessive ultrasonic exposure
- o Solderability compatible with JEDEC J-STD-020C Pb-free process, 260°C peak reflow temperature
- o This product complies with EU directive 2002/95/EC (RoHS compliance)



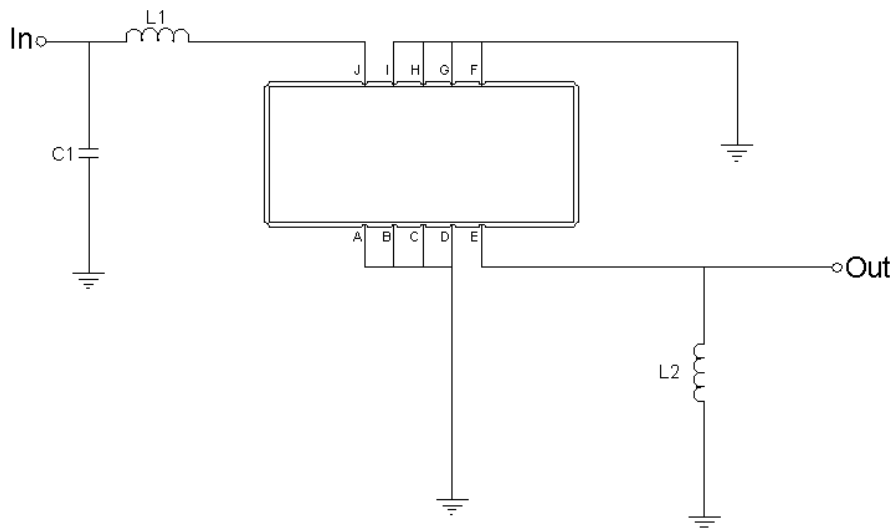


Mechanical Dimensions (mm)



Pin Description	
A, B, C, D, F, G, H, I	Ground
J	Input
E	Output

Test Circuit



Test Fixture & Values	
Input	L1=39nH, C1=18pF
Output	L2=39nH
Source/Load Impedance	50 Ω

**Maximum Ratings**

Parameters Description	Unit	Minimum	Typical	Maximum
Operating Temperature Range	°C	-10	-	70
Storage Temperature Range	°C	-30	-	80
Maximum DC Voltage	V	-	-	10
Maximum Input Power	dBm	-	-	10
Source Impedance (single ended) ⁽¹⁾	Ω	-	50	-
Load Impedance (single ended) ⁽¹⁾	Ω	-	50	-

Notes: With Matching Network (Ref. Testing Environment Circuit as shown above).

Those impedances could be modified with different impedance values and/or structures, if necessary.

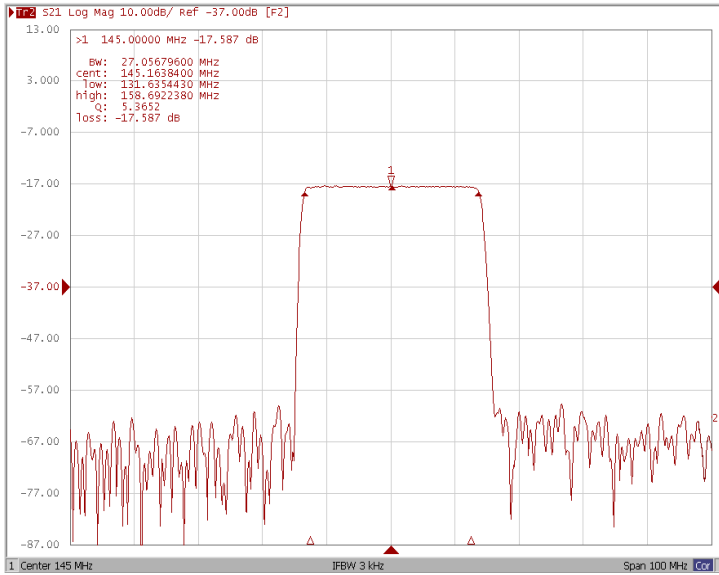
Electrical Specification

Parameters Description	Unit	Minimum	Typical	Maximum
Center Frequency (Fo)	MHz	-	145.0	-
Insertion Loss at Fo	dB	-	17.6	21.0
Group Delay Variation (Fo±12.48MHz)	ns	-	45	70
Absolute Delay	us	-	1.05	-
Passband Ripple (Fo±12.48MHz)	dB	-	0.42	0.90
Bandwidth at -1dB	MHz	26.50	27.05	-
Bandwidth at -10dB	MHz	-	28.78	28.96
Bandwidth at -20dB	MHz	-	29.65	-
Bandwidth at -40dB	MHz	-	30.90	-
Ultimate Rejection	dB	-	42	-
Temperature coefficient	ppm/°C	-	-86	-

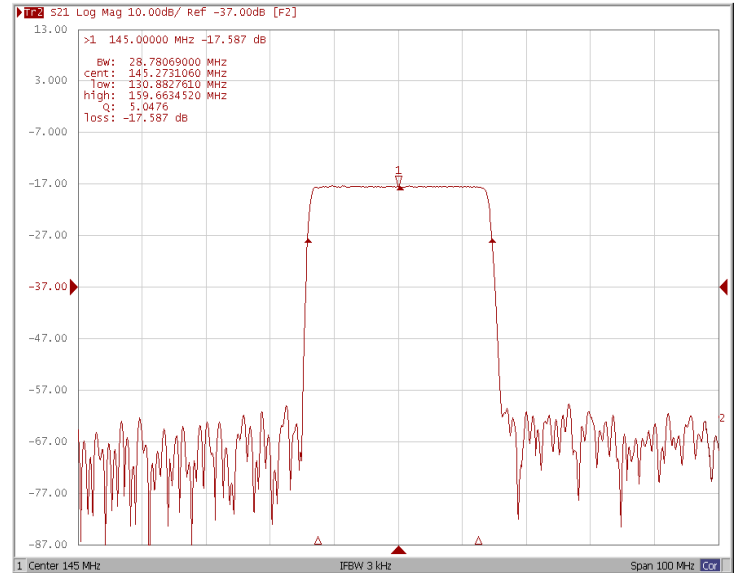


Frequency Response

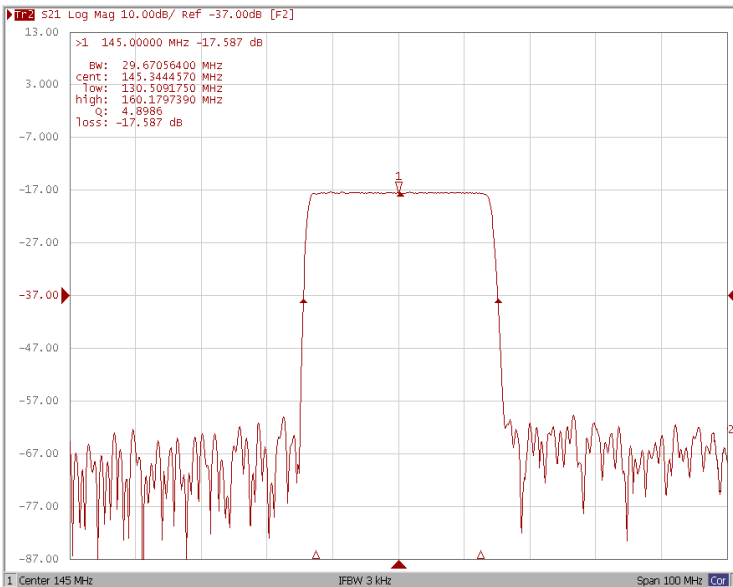
Bandwidth at -1.0 dB



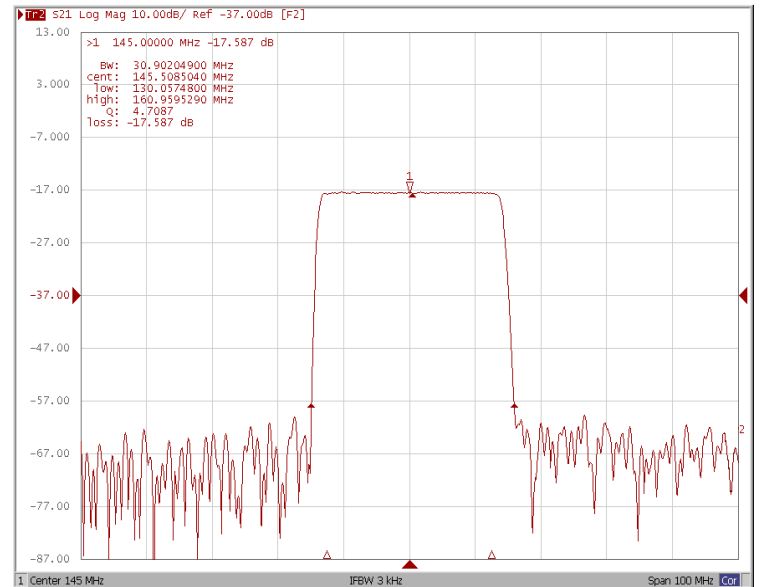
Bandwidth at -10.0 dB



Bandwidth at -20.0 dB

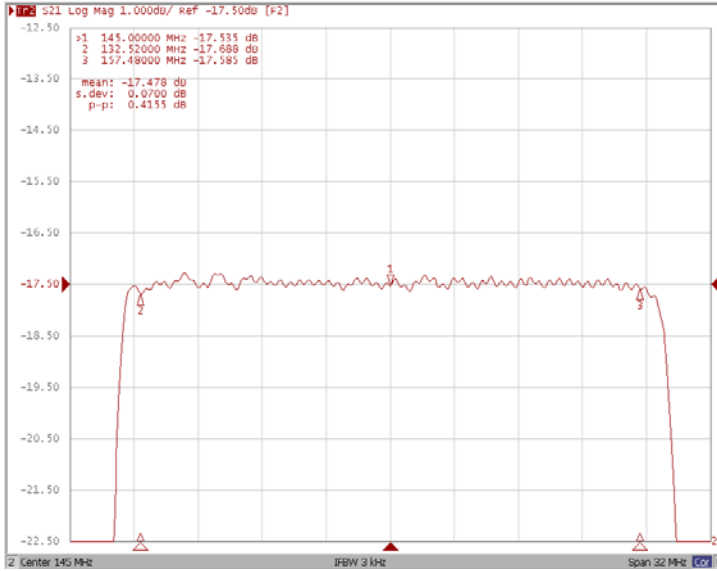


Bandwidth at -40.0 dB

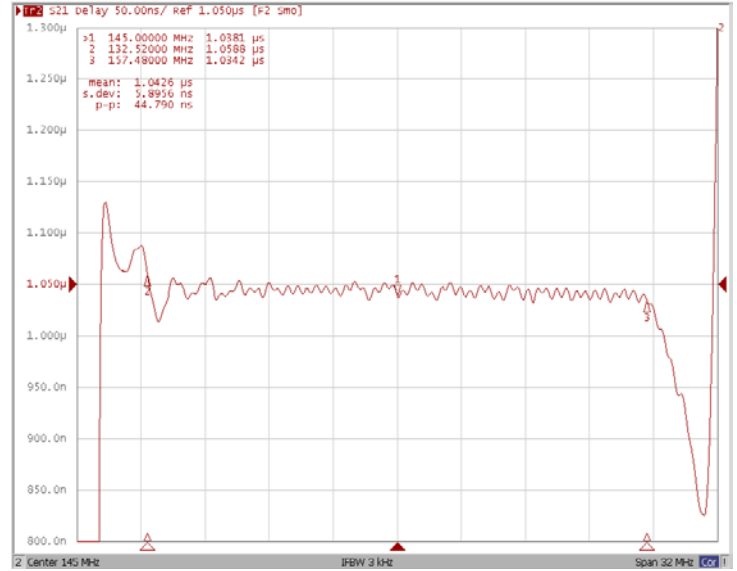




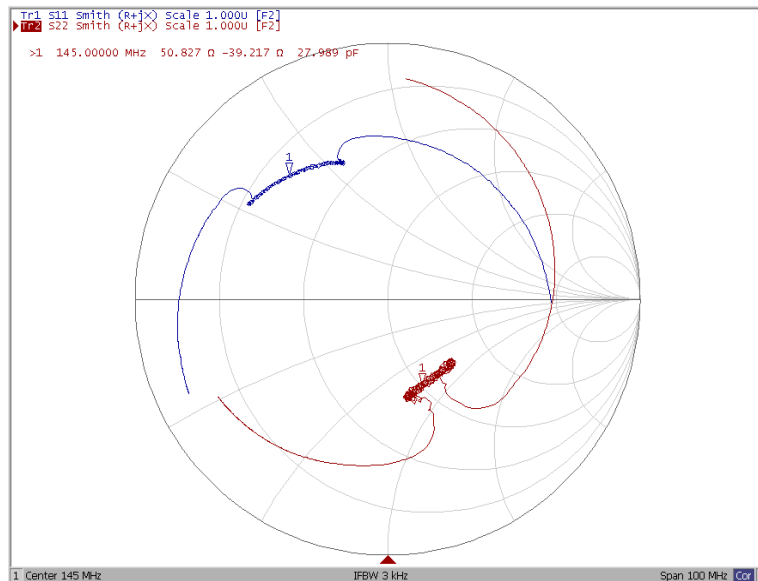
Ripple Variation Fo±12.48MHz



Group Delay Variation Fo±12.48MHz



Smith Chart





VSWR

