



# PRODUCT SPECIFICATION

REV A January 2011

Oscilent Controlled Document

Ordering Code / Part Number	Product Description
821-IF133.5M-26D	33.5 MHz IF SAW Filter 26.20 MHz Bandwidth

## Specification Contents

- o Mechanical Dimensions
- o Test Circuit
- o Maximum Ratings
- o Electrical Specification
- o Frequency Response
- o Smith Chart
- o VSWR

## Notes

- o Electrostatic Sensitive Device (ESD) 
- o Avoid excessive ultrasonic exposure
- o Solderability compatible with JEDEC J-STD-020C Pb-free process, 260°C peak reflow temperature
- o This product complies with EU directive 2002/95/EC (RoHS compliance)



Oscilent Corporation  
Telephone: 1.949.252.0522  
Fax: 1.949.252.0522  
Email: sales@oscilent.com

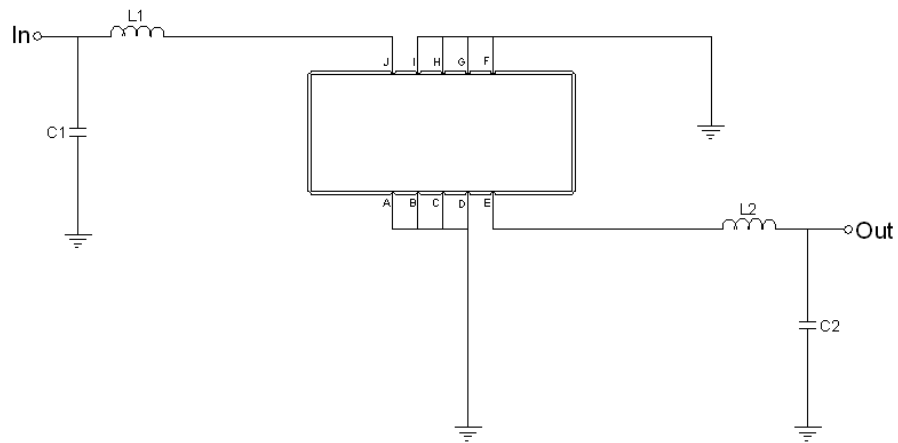


## Mechanical Dimensions (mm)



Pin Description	
A, B, C, D, F, G, H, I	Ground
J	Input
E	Output

## Test Circuit



Test Fixture & Values	
Input	L1=68 nH, C1=10 pF
Output	L2=82nH, C2=22 pF
Source/Load Impedance	50 Ω



## Maximum Ratings

Parameters Description	Unit	Minimum	Typical	Maximum
Operating Temperature Range	°C	0		70
Storage Temperature Range	°C	-30	-	80
Maximum DC Voltage	V	-	-	10
Maximum Input Power	dBm	-	-	10
Source Impedance (single ended) <sup>(1)</sup>	Ω	-	50	-
Load Impedance (single ended) <sup>(1)</sup>	Ω	-	50	-

Notes: With Matching Network (Ref. Testing Environment Circuit as shown above).

Those impedances could be modified with different impedance values and/or structures, if necessary.

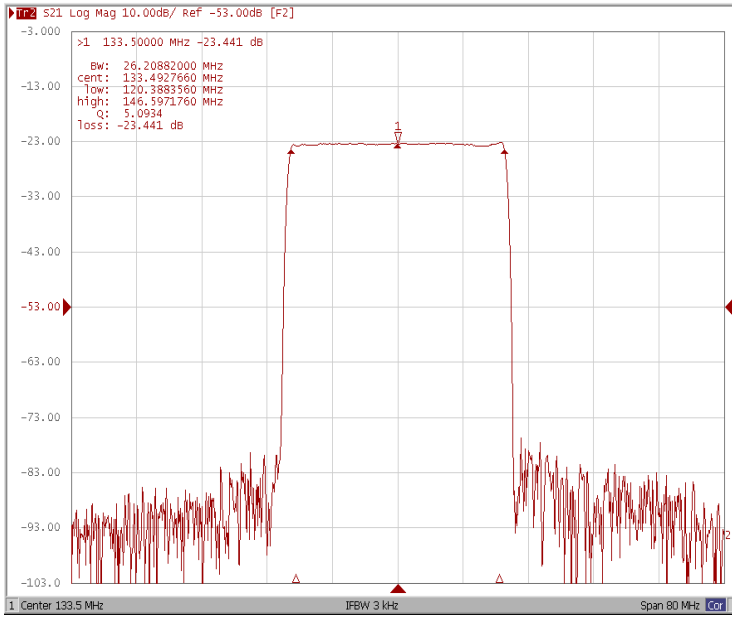
## Electrical Specification

Parameters Description	Unit	Minimum	Typical	Maximum
Center Frequency (Fo)	MHz	-	133.50	-
Insertion Loss at Fo	dB	-	23.50	25.0
Group Delay Variation (Fo±12.5MHz)	ns	-	40	80
Absolute Delay	us	-	1.92	-
Passband Ripple (Fo±12.5MHz)	dB	-	0.75	1.2
Bandwidth at -1dB	MHz	25.00	26.20	-
Bandwidth at -10dB	MHz	-	27.15	27.30
Bandwidth at -20dB	MHz	-	27.60	27.80
Bandwidth at -30dB	MHz	-	27.90	28.10
Bandwidth at -45dB	MHz	-	28.25	
Ultimate Rejection	dB	-	50	-
Temperature Coefficient	ppm/°C	-	-72	-

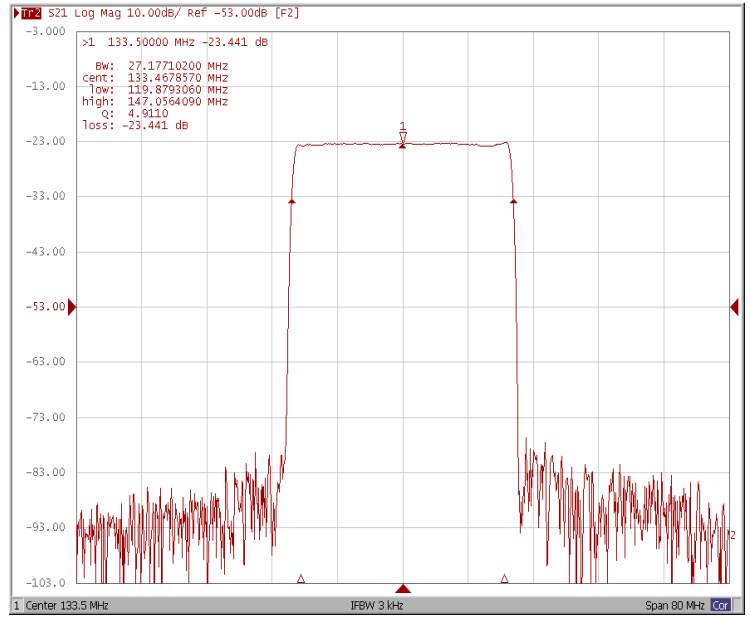


## Frequency Response

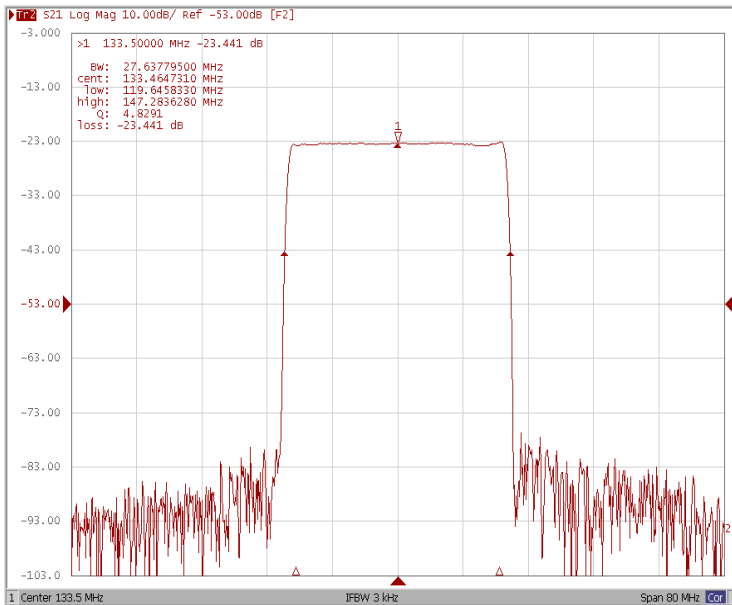
### Bandwidth at -1.0 dB



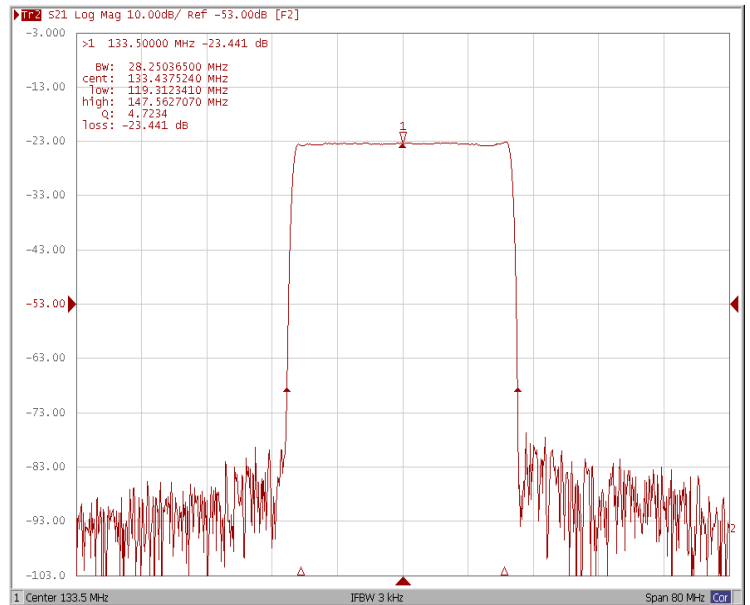
### Bandwidth at -10.0 dB



### Bandwidth at -20.0 dB

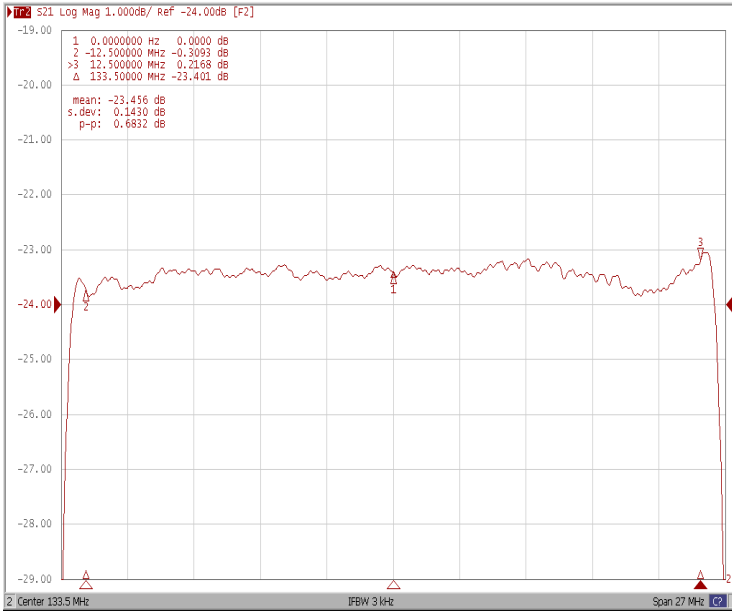


### Bandwidth at -45.0 dB

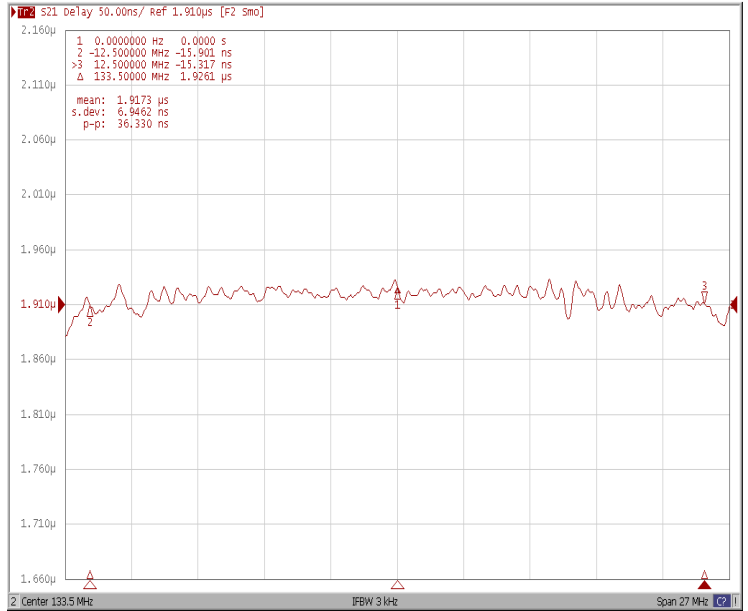




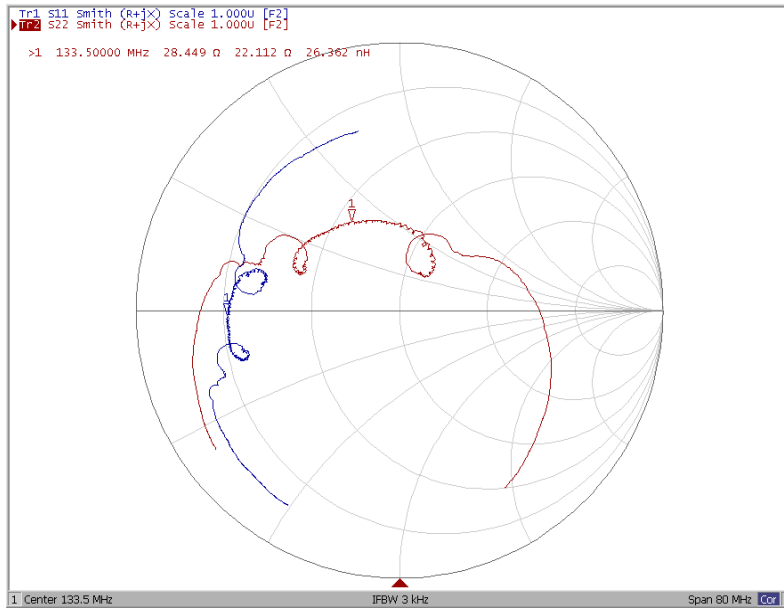
### Ripple Variation Fo±12.5MHz



### Group Delay Variation Fo±12.5MHz



### Smith Chart





### VSWR

