



REV A January 2011

Oscilent Controlled Document

Ordering Code / Part Number	Product Description
820-IF260.0M-29A	60.0 MHz IF SAW Filter 29.61 MHz Bandwidth

Specification Contents

- o Mechanical Dimensions
- o Test Circuit
- o Maximum Ratings
- o Electrical Specification
- o Frequency Response
- o Smith Chart
- o VSWR

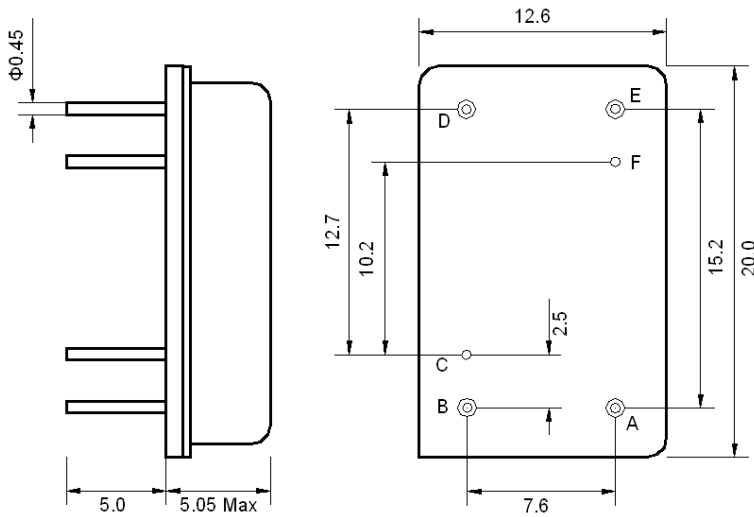
Notes

- o Electrostatic Sensitive Device (ESD) 
- o Avoid excessive ultrasonic exposure
- o Solderability compatible with JEDEC J-STD-020C Pb-free process, 260°C peak reflow temperature
- o This product complies with EU directive 2002/95/EC (RoHS compliance)



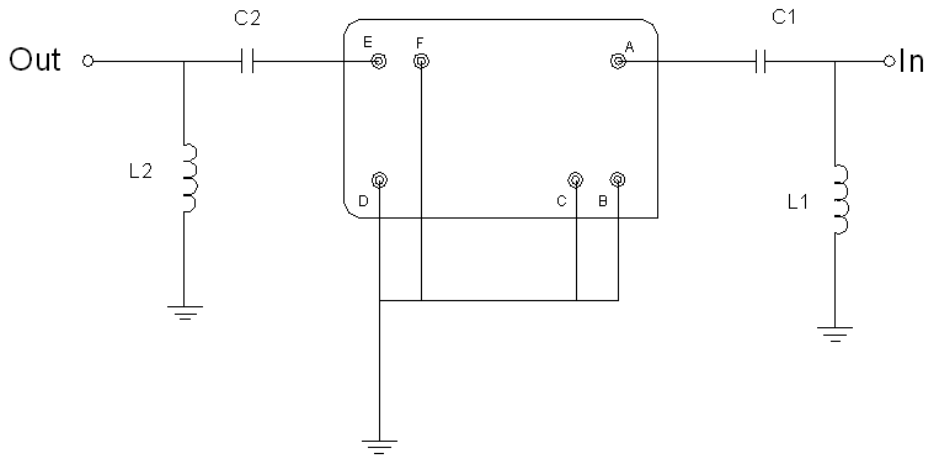


Mechanical Dimensions (mm)



Pin Description	
B, C, D, F	Ground
A	Input
E	Output

Test Circuit



Test Fixture & Values	
Input	L1 = 8.2 nH, C1 = 220 pF
Output	L2 = 10 nH, C2 = 75 pF
Source/Load Impedance	50 Ω



Maximum Ratings

Parameters Description	Unit	Minimum	Typical	Maximum
Operating Temperature Range	°C	-30	-	+80
Storage Temperature Range	°C	-40	-	+85
Maximum DC Voltage	V	-	-	10
Maximum Input Power	dBm	-	-	10
Source Impedance (single ended) ⁽¹⁾	Ω	-	50	-
Load Impedance (single ended) ⁽¹⁾	Ω	-	50	-

Notes: With Matching Network (Ref. Testing Environment Circuit as shown above).

Those impedances could be modified with different impedance values and/or structures, if necessary.

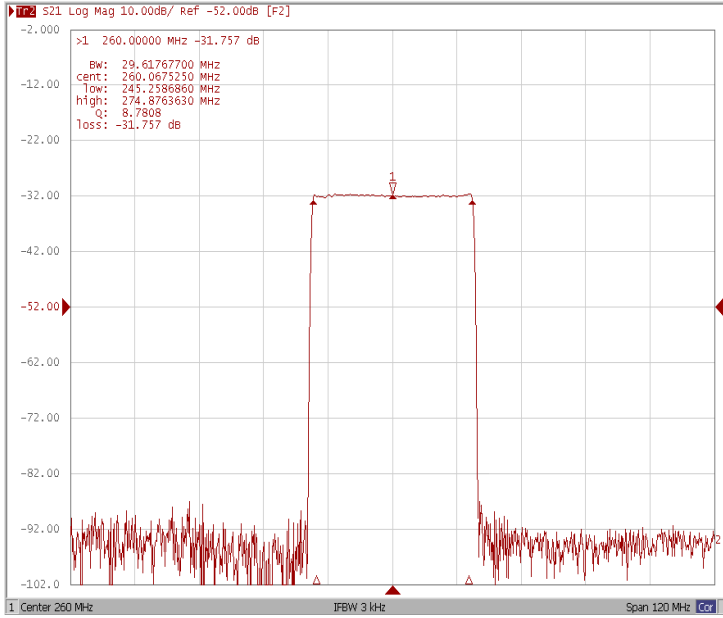
Electrical Specification

Parameters Description	Unit	Minimum	Typical	Maximum
Center Frequency (Fo)	MHz	-	260.0	-
Insertion Loss at Fo	dB	-	31.7	-
Group Delay Variation at Fo ± 14.32 MHz	nsec	-	43	80
Absolute Delay at Fo	usec	-	2.83	-
Passband Ripple Variation at Fo ± 14.32 MHz	dB	-	0.7	1.0
Bandwidth at -1dB	MHz	29.40	29.61	-
Bandwidth at -3dB	MHz	-	29.92	-
Bandwidth at -40dB	MHz	-	31.23	31.40
Ultimate Rejection	dB	50	53	-
Temperature Coefficient	ppm/°C	-	-18	-

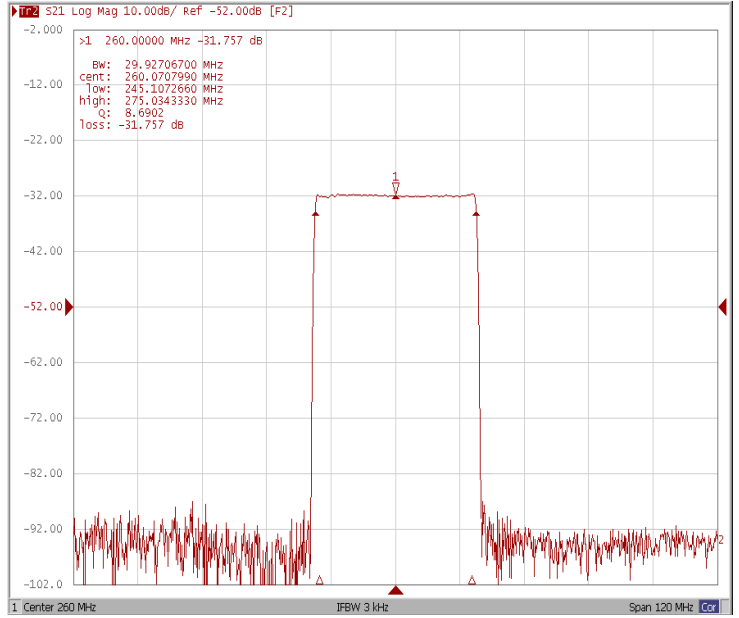


Frequency Response

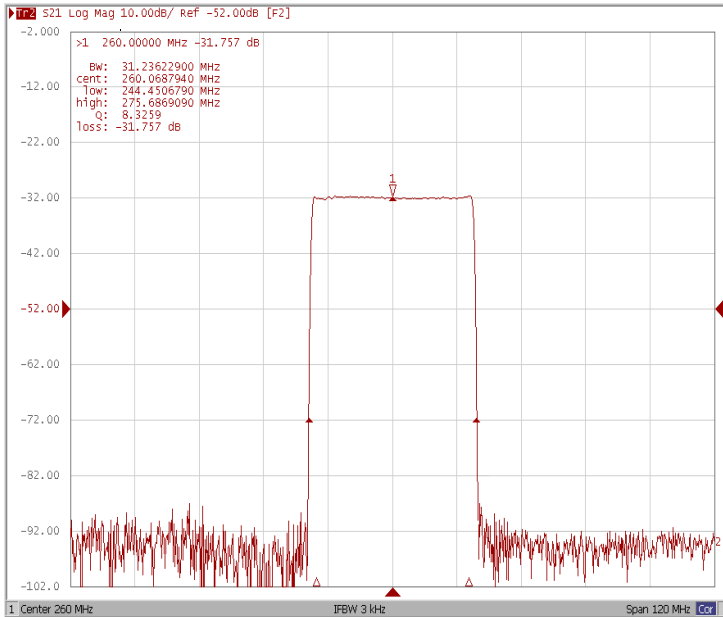
Bandwidth at -1.0 dB



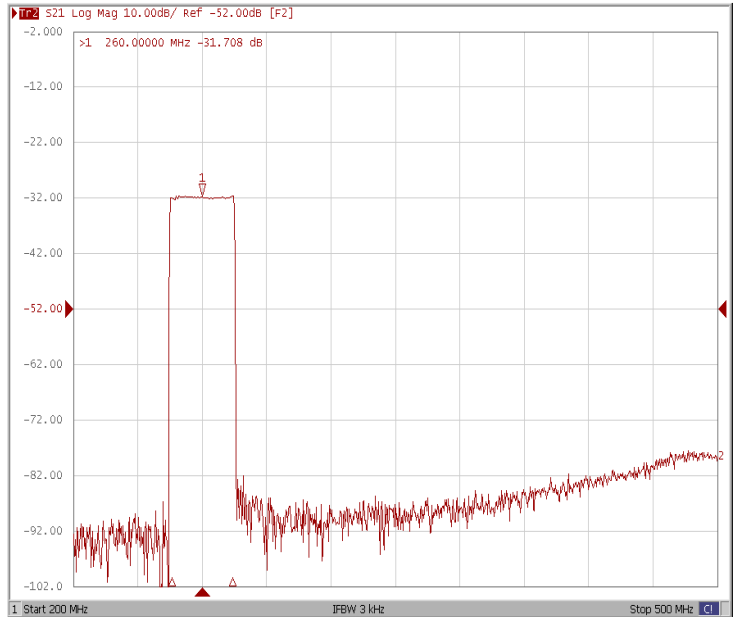
Bandwidth at -3.0 dB



Bandwidth at -40.0 dB

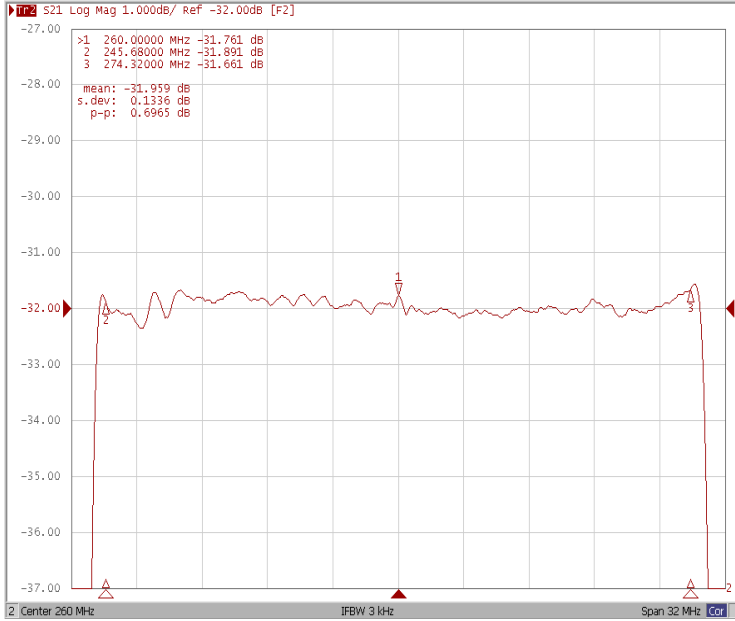


Wide-Band

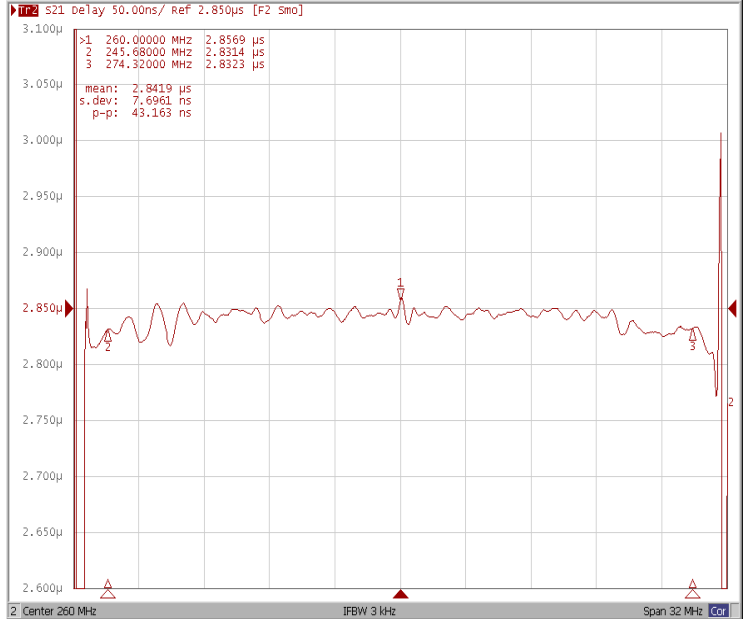




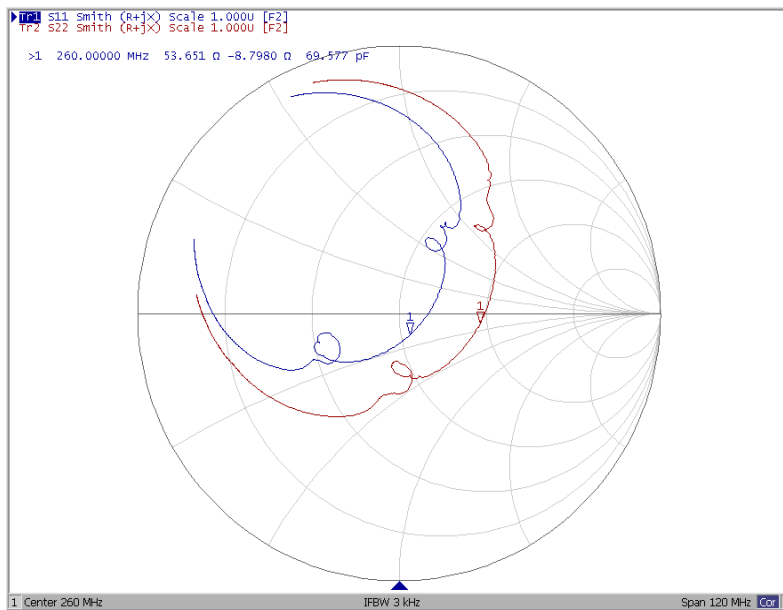
Ripple Variation Fo±14.32MHz



Group Delay Variation Fo±14.32MHz



Smith Chart





VSWR

