



REV A January 2011

Oscilent Controlled Document

Ordering Code / Part Number	Product Description
820-IF120.0M-04A	120.0MHz IF SAW Filter 4.20MHz Bandwidth

Specification Contents

- o Mechanical Dimensions
- o Test Circuit
- o Maximum Ratings
- o Electrical Specification
- o Frequency Response
- o Smith Chart
- o VSWR

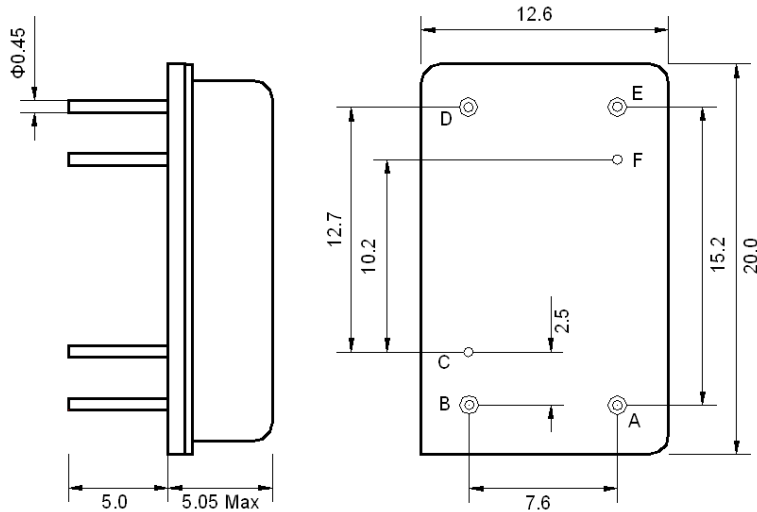
Notes

- o Electrostatic Sensitive Device (ESD) 
- o Avoid excessive ultrasonic exposure
- o Solderability compatible with JEDEC J-STD-020C Pb-free process, 260°C peak reflow temperature
- o This product complies with EU directive 2002/95/EC (RoHS compliance)



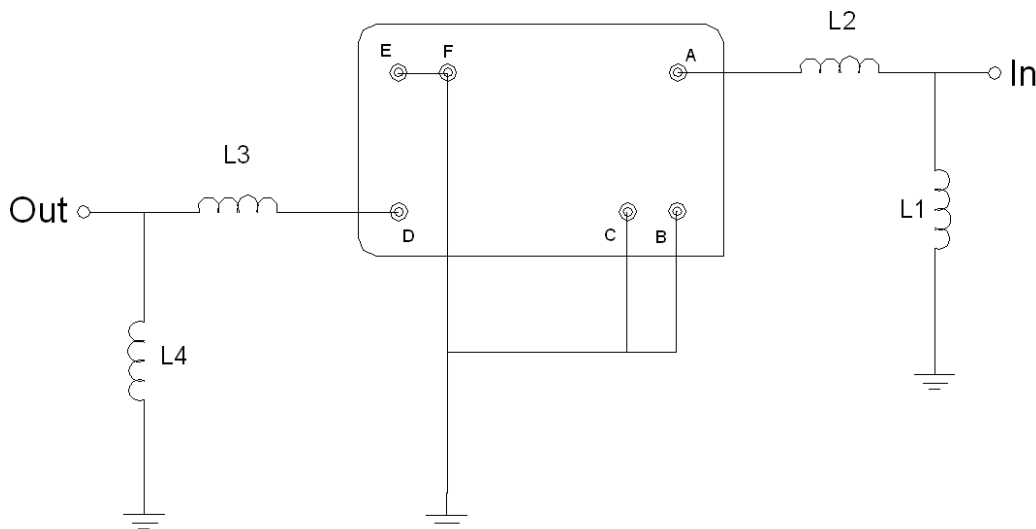


Mechanical Dimensions (mm)



Pin Description	
B, C, E, F	Ground
A	Input
D	Output

Test Circuit



Test Fixture & Values	
Input	L1 = 27 nH, L2 = 68 nH
Output	L3 = 47 nH, L4 = 27 nH
Source/Load Impedance	50 Ω



Maximum Ratings

Parameters Description	Unit	Minimum	Typical	Maximum
Operating Temperature Range	°C	-30	-	80
Storage Temperature Range	°C	-40	-	85
Maximum DC Voltage	V	-	-	10
Maximum Input Power	dBm	-	-	10
Source Impedance (single ended) ⁽¹⁾	Ω	-	50	-
Load Impedance (single ended) ⁽¹⁾	Ω	-	50	-

Notes: With Matching Network (Ref. Testing Environment Circuit as shown above).

Those impedances could be modified with different impedance values and/or structures, if necessary.

Electrical Specification

Parameters Description	Unit	Minimum	Typical	Maximum
Center Frequency (Fo)	MHz	-	120.0	-
Insertion Loss at Fo	dB	-	21.20	23.00
Amplitude Ripple Variation within Fo ±1.92 MHz	dB _{p-p}	-	0.35	1.00
Group Delay Variation within Fo ±1.92 MHz	nsec	-	70	150
Absolute Delay at Fo	μsec	-	2.47	-
Temperature Coefficient	ppm/°C	-	-0.03	-
Bandwidth at -1.0 dB	MHz	4.00	4.20	-
Bandwidth at -3.0 dB	MHz	-	4.50	-
Bandwidth at -25.0 dB	MHz	-	5.33	5.50
Bandwidth at -40.0 dB	MHz	-	5.58	5.70
Attenuation Rejection				
Lower Sidelobe	dB	47	52	
Upper Sidelobe	dB	47	52	



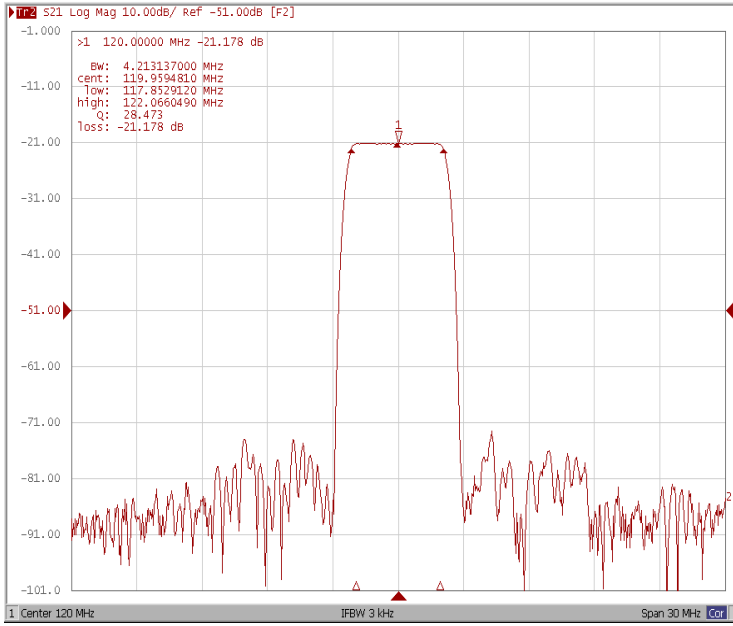
January 2011 Rev A

Oscilent Part Number 820-IF120.0M-04A

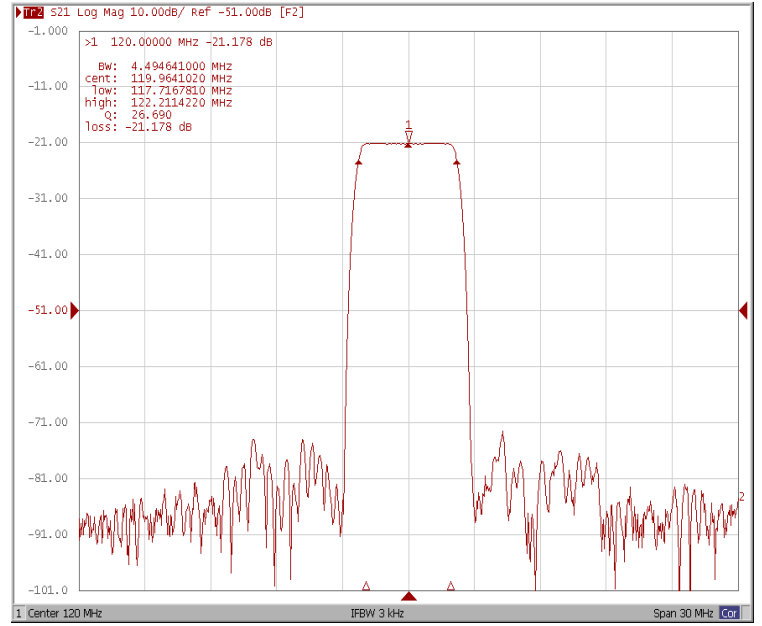
120.0MHz IF SAW Filter 4.20MHz Bandwidth

Frequency Response

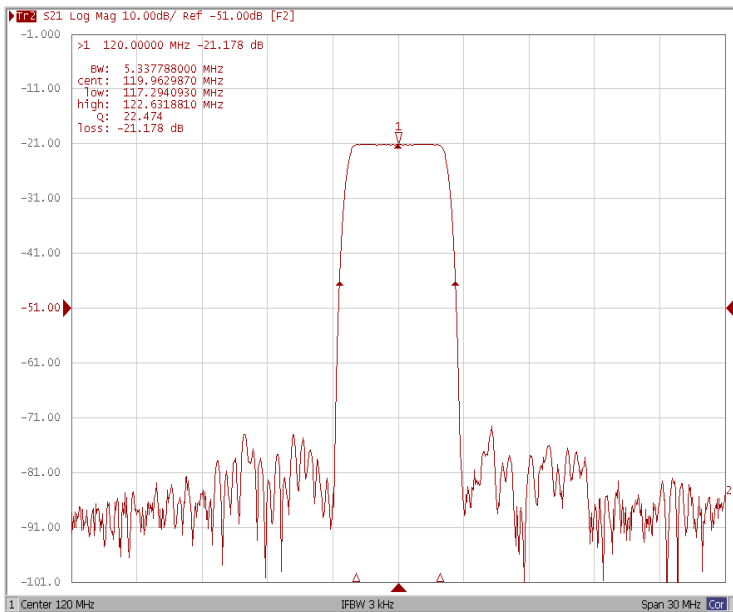
Bandwidth at -1.0 dB



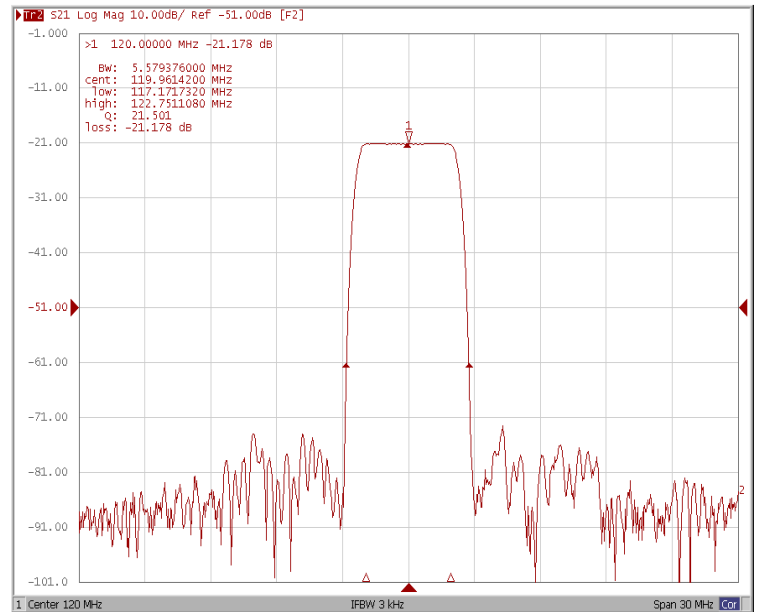
Bandwidth at -3.0 dB



Bandwidth at -25.0 dB

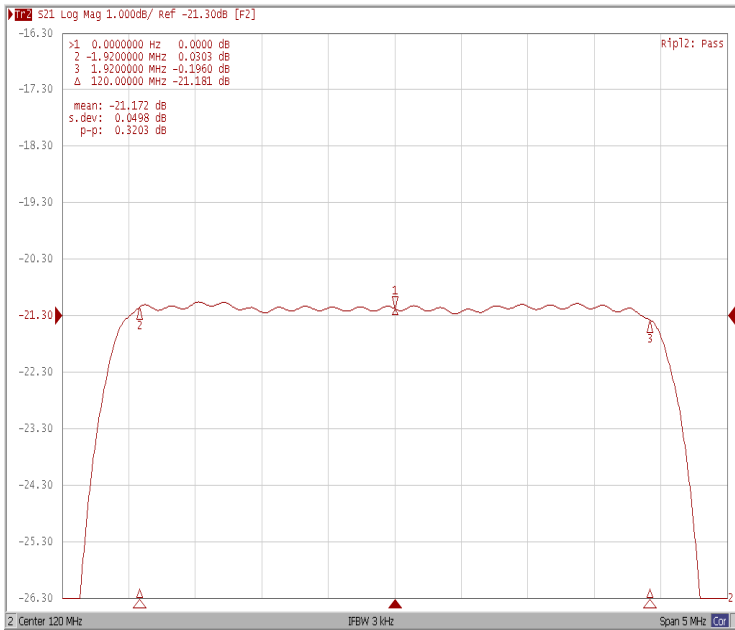


Bandwidth at -40.0 dB

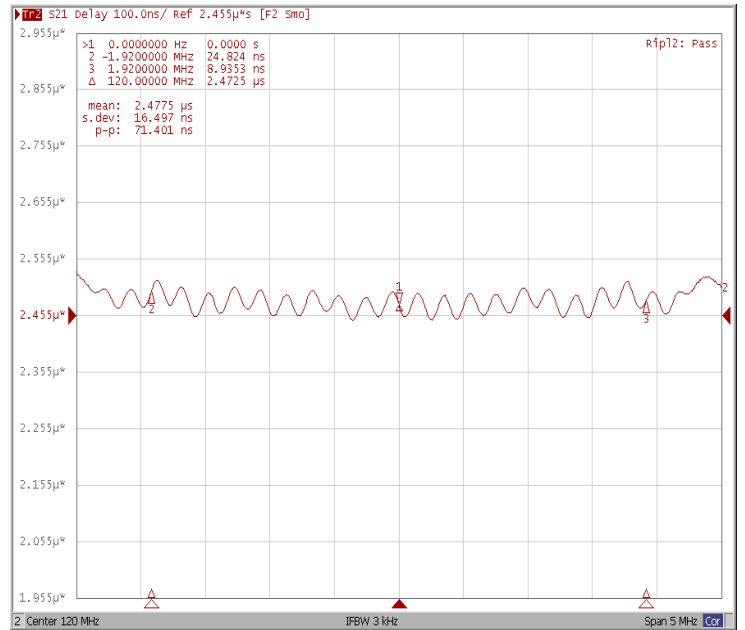




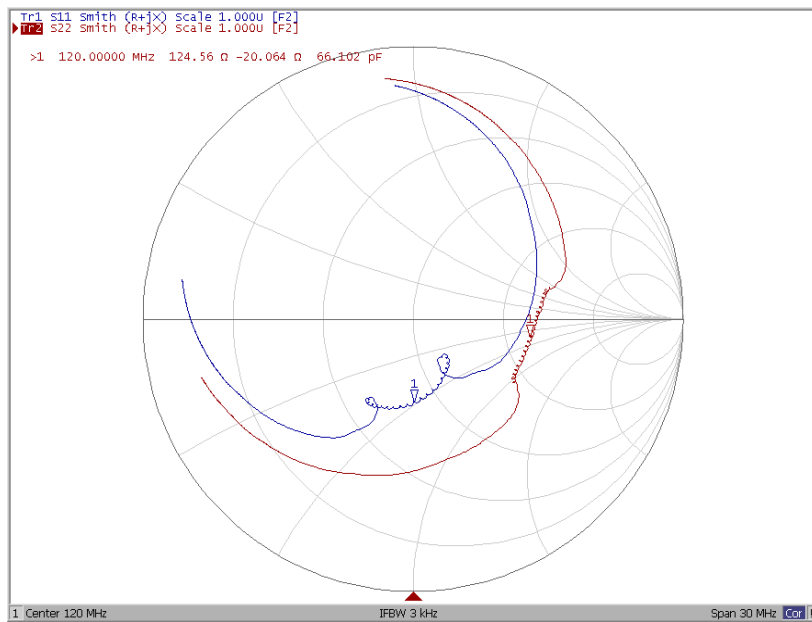
Ripple Variation Fo±1.92MHz



Group Delay Variation Fo±1.92MHz



Smith Chart





VSWR

