



# PRODUCT SPECIFICATION

REV A January 2011

Oscilent Controlled Document

Ordering Code / Part Number	Product Description
813-SL75.0M-26A	75.0 MHz IF SAW Filter 25.0 MHz Band

## Specification Contents

- o Mechanical Dimensions
- o Test Circuit
- o Maximum Ratings
- o Electrical Specification
- o Frequency Response
- o Smith Chart
- o VSWR

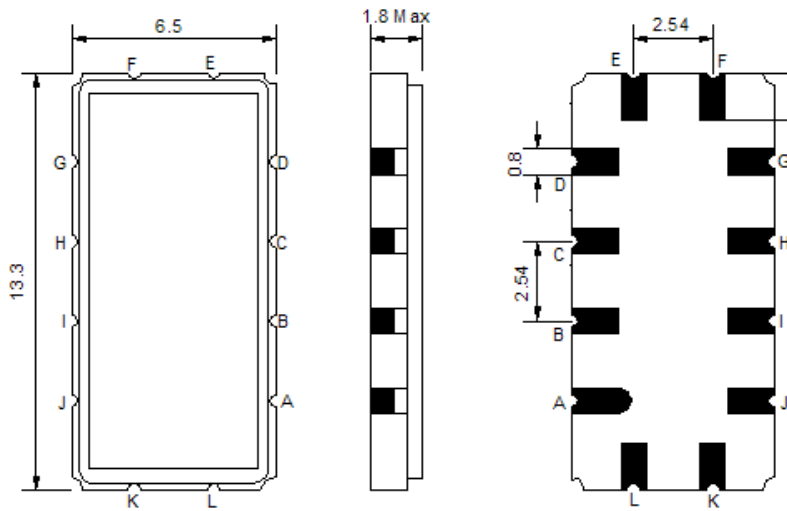
## Notes

- o Electrostatic Sensitive Device (ESD) 
- o Avoid excessive ultrasonic exposure
- o Solderability compatible with JEDEC J-STD-020C Pb-free process, 260°C peak reflow temperature
- o This product complies with EU directive 2002/95/EC (RoHS compliance)



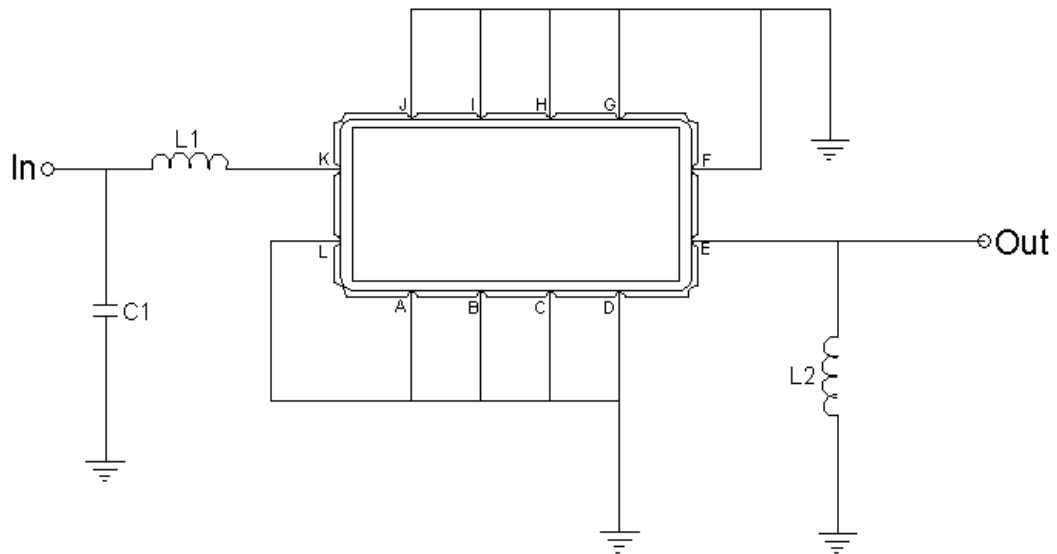


## Mechanical Dimensions (mm)



Pin Description	
A, B, C, D, F, G, H, I, J, L	Ground
K	Input
E	Output

## Test Circuit



Test Fixture & Values	
Input	L1=120 nH, C1=12pF
Output	L2=120 nH
Source/Load Impedance	50 Ω



## Maximum Ratings

Parameters Description	Unit	Minimum	Typical	Maximum
Operating Temperature Range	°C	-30	-	+80
Storage Temperature Range	°C	-40	-	+85
Maximum DC Voltage	V	-	-	10
Maximum Input Power	dBm	-	-	10
Source Impedance (single ended) <sup>(1)</sup>	Ω	-	50	-
Load Impedance (single ended) <sup>(1)</sup>	Ω	-	50	-

Notes: With Matching Network (Ref. Testing Environment Circuit as shown above).

Those impedances could be modified with different impedance values and/or structures, if necessary.

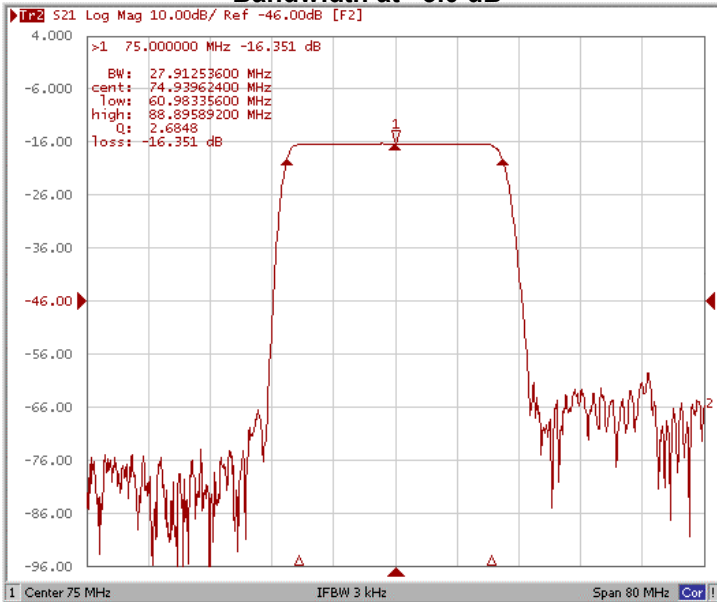
## Electrical Specification

Parameters Description	Unit	Minimum	Typical	Maximum
Center Frequency (Fo)	MHz	-	75.0	-
Insertion Loss at Fo	dB	-	16.3	18.0
Group Delay Variation (Fo±12.5MHz)	nsec	-	18	35
Absolute Delay at Fo	usec	-	0.82	-
Temperature Coefficient	ppm/°C	-	-86	-
Passband Ripple (Fo±12.5MHz)	dB	-	0.40	1.00
Bandwidth at -1dB	MHz	26.0	26.7	-
Bandwidth at -3dB	MHz	-	27.9	-
Bandwidth at -40dB	MHz	-	33.2	35.0
Relative Attenuation				
Lower Sidelobe	dB	-	48	-
Upper Sidelobe	dB	-	45	-

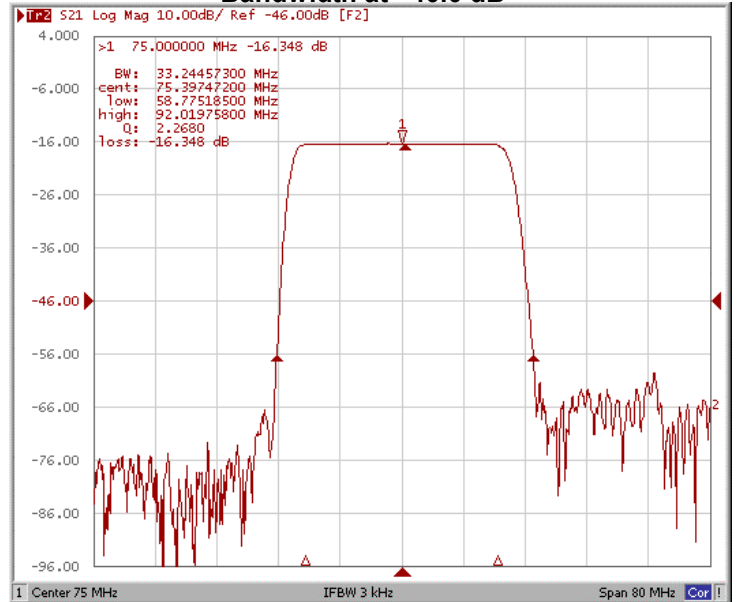


### Frequency Response

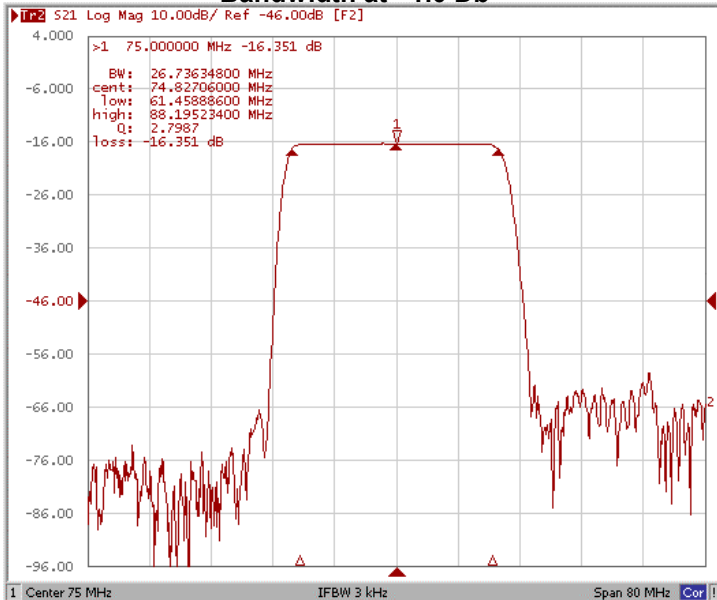
#### Bandwidth at -3.0 dB



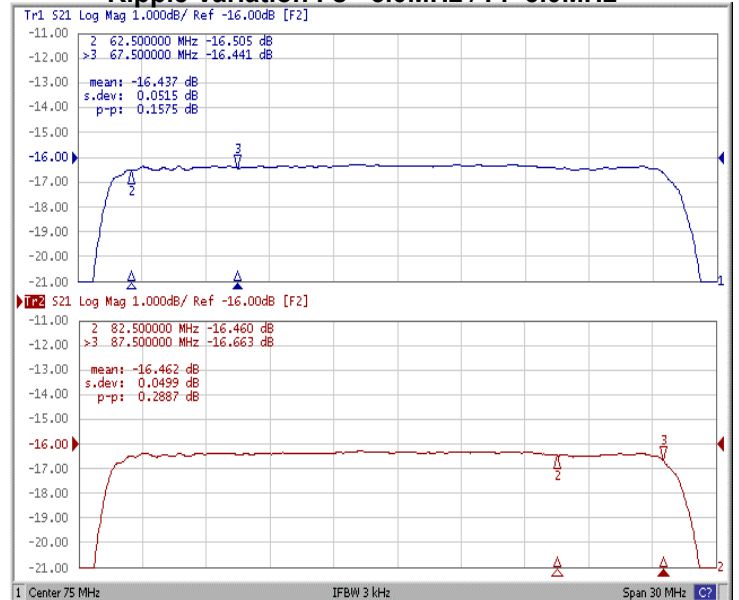
#### Bandwidth at -40.0 dB



#### Bandwidth at -1.0 Db

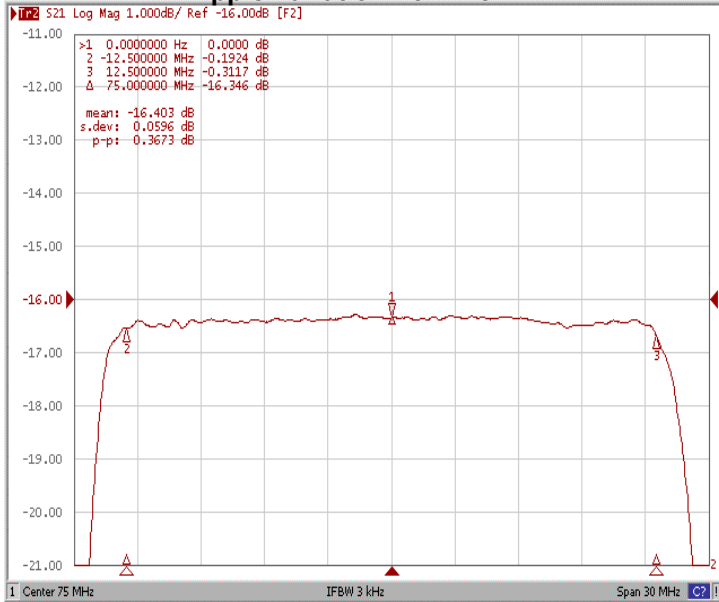


#### Ripple Variation Fs +5.0MHz / FI -5.0MHz

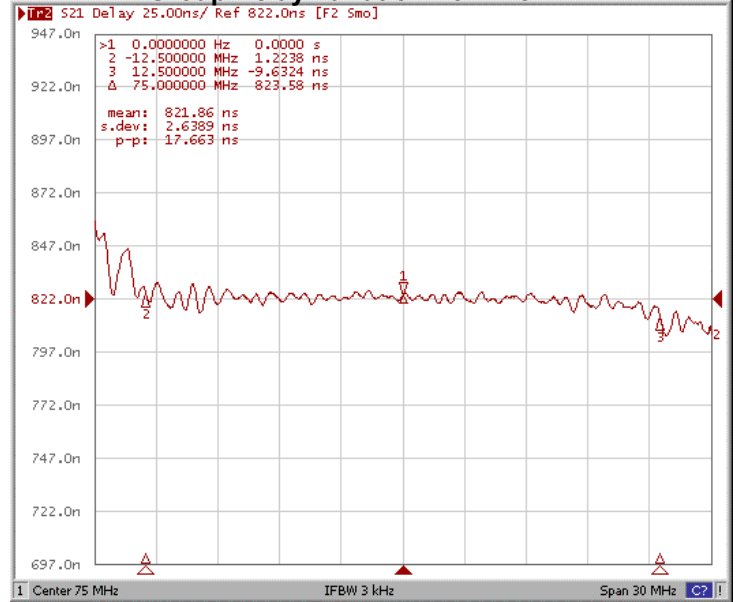




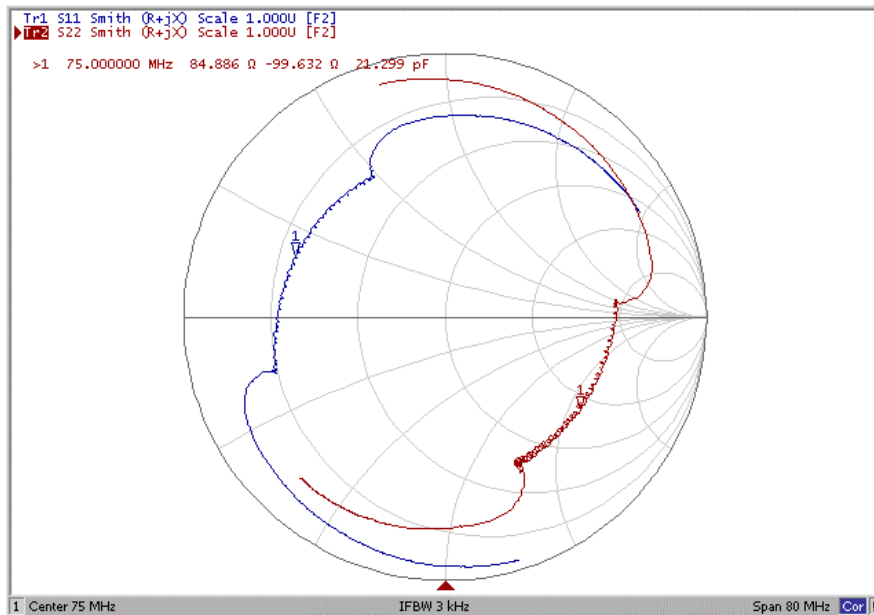
### Ripple Variation Fo±12.5MHz



### Group Delay Variation Fo±12.5MHz



### Smith Chart





### VSWR

