



PRODUCT SPECIFICATION

REV A January 2011

Oscilent Controlled Document

Ordering Code / Part Number	Product Description
813-SL75.0M-05A	75.0MHz IF SAW Filter 5.30MHz Bandwidth

Specification Contents

- o Mechanical Dimensions
- o Test Circuit
- o Maximum Ratings
- o Electrical Specification
- o Frequency Response
- o Smith Chart
- o VSWR

Notes

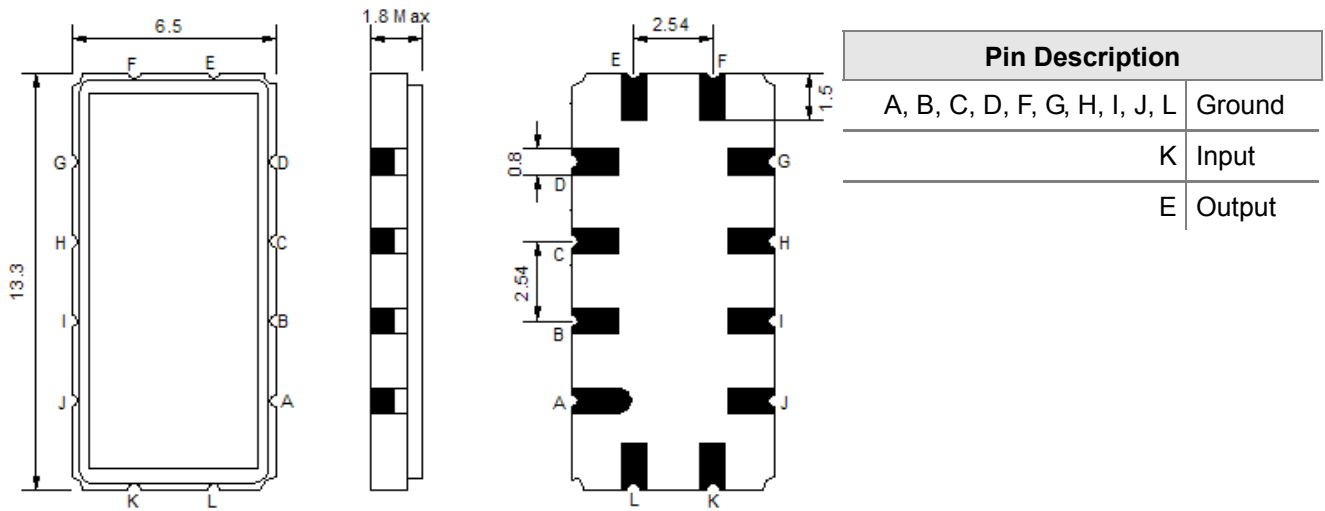
- o Electrostatic Sensitive Device (ESD) 
- o Avoid excessive ultrasonic exposure
- o Solderability compatible with JEDEC J-STD-020C Pb-free process, 260°C peak reflow temperature
- o This product complies with EU directive 2002/95/EC (RoHS compliance)



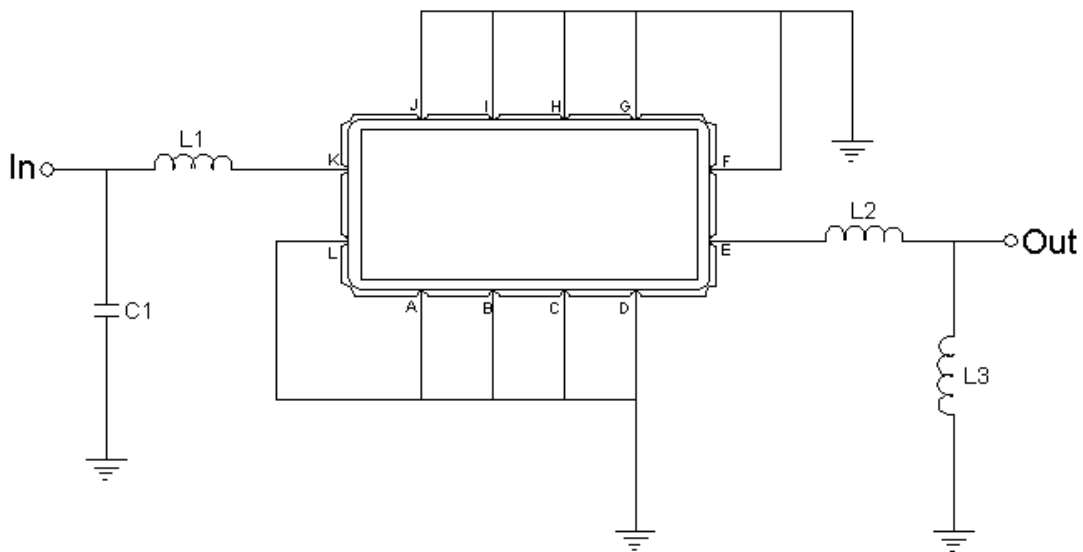
Oscilent Corporation
Telephone: 1.949.252.0522
Fax: 1.949.252.0522
Email: sales@oscilent.com



Mechanical Dimensions (mm)



Test Circuit



Test Fixture & Values	
Input	L1=68nH, C1=130pF
Output	L2=8.2nH, L3=39nH
Source/Load Impedance	50 Ω



Maximum Ratings

Parameters Description	Unit	Minimum	Typical	Maximum
Operating Temperature Range	°C	-30	-	85
Storage Temperature Range	°C	-40	-	85
Maximum DC Voltage	V	-	-	10
Maximum Input Power	dBm	-	-	30
Source Impedance (single ended) ⁽¹⁾	Ω	-	50	-
Load Impedance (single ended) ⁽¹⁾	Ω	-	50	-

Notes: With Matching Network (Ref. Testing Environment Circuit as shown above).

Those impedances could be modified with different impedance values and/or structures, if necessary.

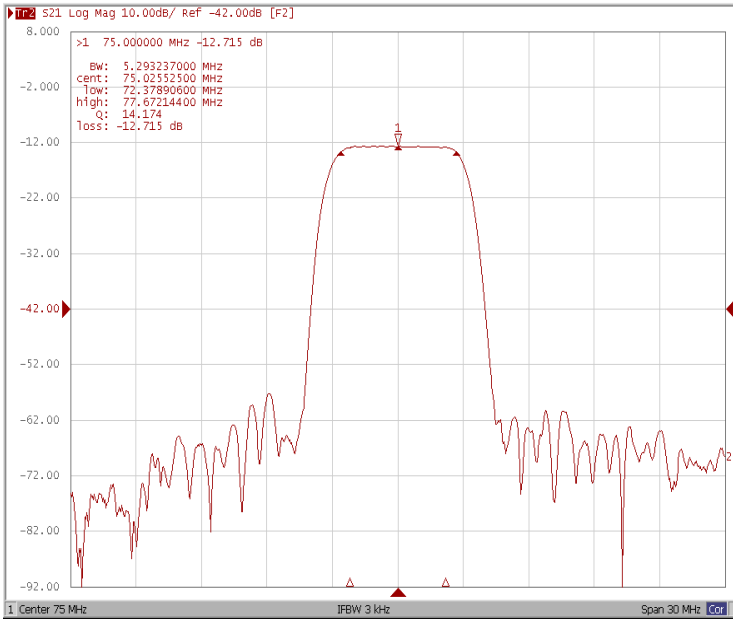
Electrical Specification

Parameters Description	Unit	Minimum	Typical	Maximum
Center Frequency (Fo)	MHz	-	75.0	-
Insertion Loss at Fo	dB	-	12.8	15.0
Temperature Coefficient	ppm/°C	-	-18	-
Amplitude Ripple within fo ±2.2 MHz	dB _{p-p}	-	0.3	0.5
Group Delay Variation within fo ±2.2 MHz	nsec	-	50	80
Absolute Delay at Fo	µsec	-	1.21	-
Bandwidth at -1.0 dB	MHz	-	5.30	-
Bandwidth at -3.0 dB	MHz	-	5.95	-
Bandwidth at -40.0 dB	MHz	-	8.40	8.60
Input VSWR at Fo	dB	-	1.2	-
Output VSWR at Fo	dB	-	1.5	-
Relative Attenuation:				
Lower Sidelobe	dB	40	45	-
Upper Sidelobe	dB	40	45	-

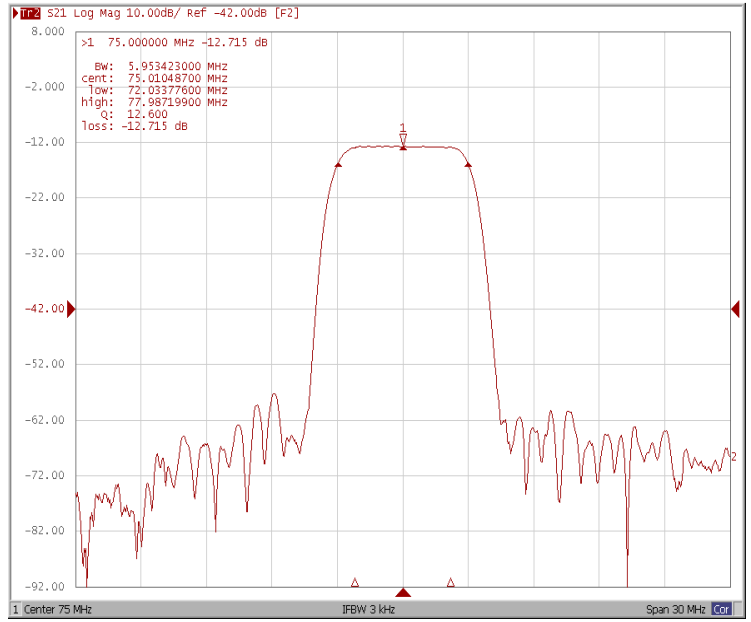


Frequency Response

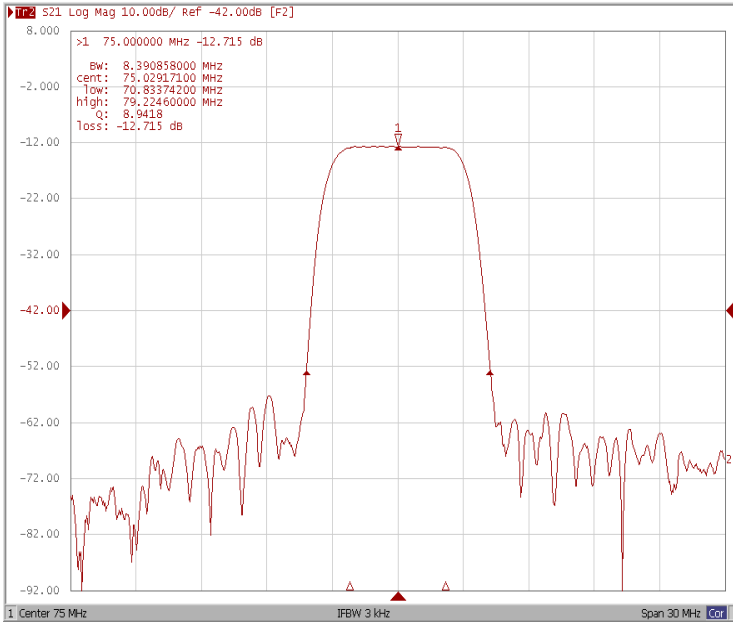
Bandwidth at -1.0 dB



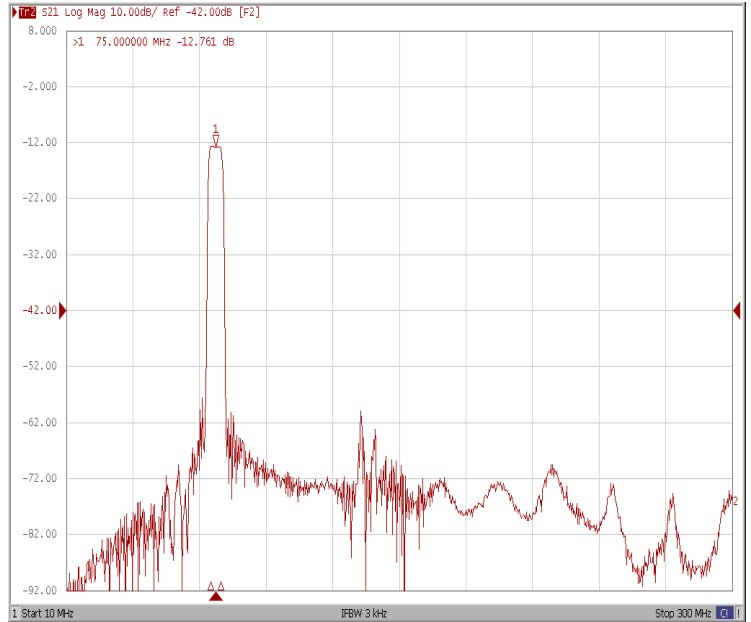
Bandwidth at -3.0 dB



Bandwidth at -40.0 dB

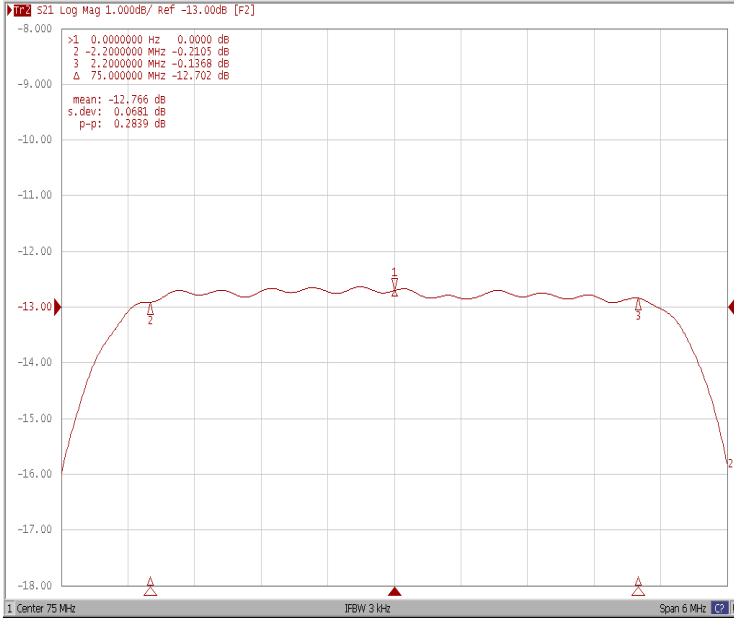


Wide-Band

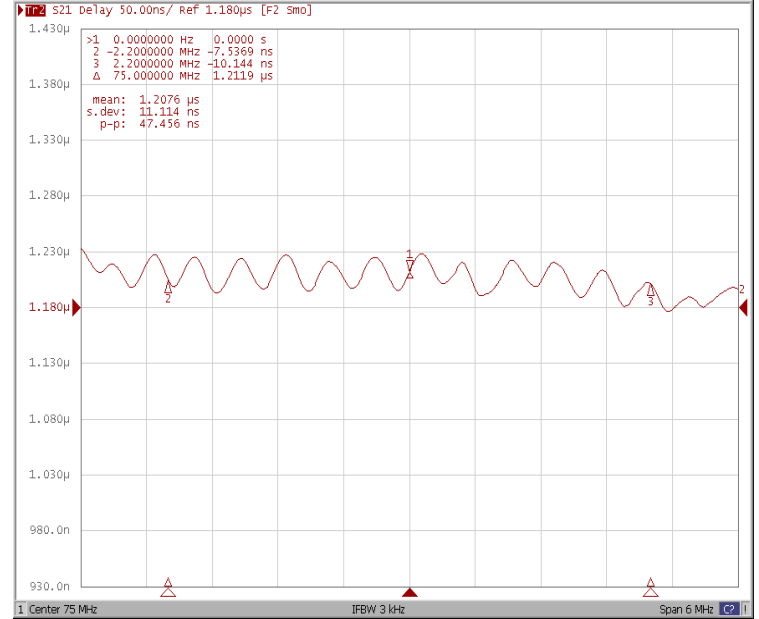




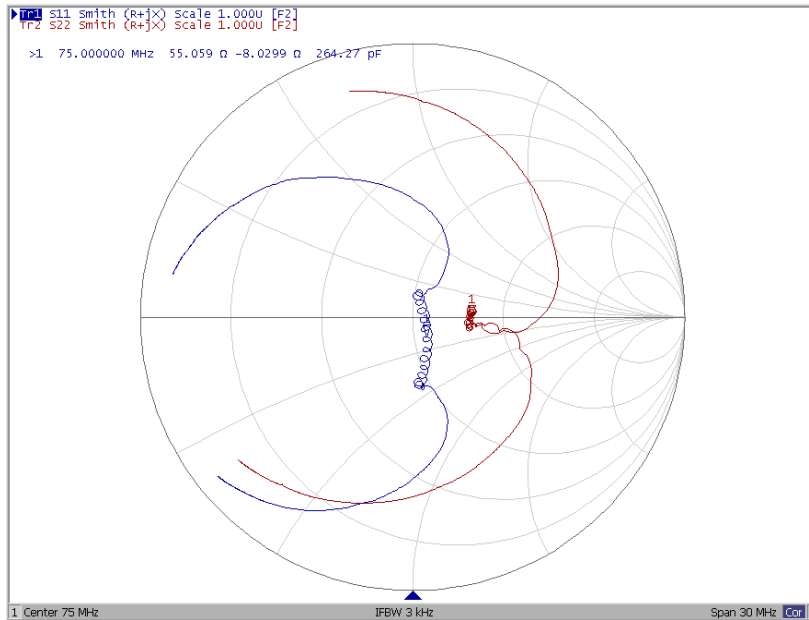
Ripple Variation Fo±2.2MHz



Group Delay Variation Fo±2.2MHz



Smith Chart





VSWR

