



PRODUCT SPECIFICATION

REV A January 2011

Oscilent Controlled Document

Ordering Code / Part Number	Product Description
813-SL66.6M-02A	66.6MHz IF SAW Filter 2.88MHz Bandwidth

Specification Contents

- o Mechanical Dimensions
- o Test Circuit
- o Maximum Ratings
- o Electrical Specification
- o Frequency Response
- o Smith Chart
- o VSWR

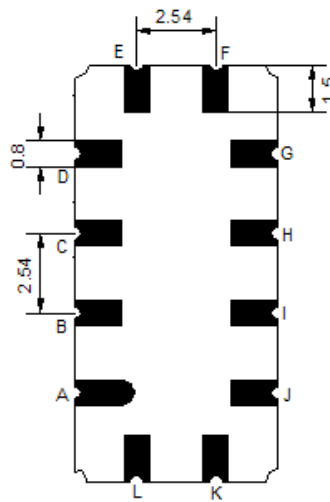
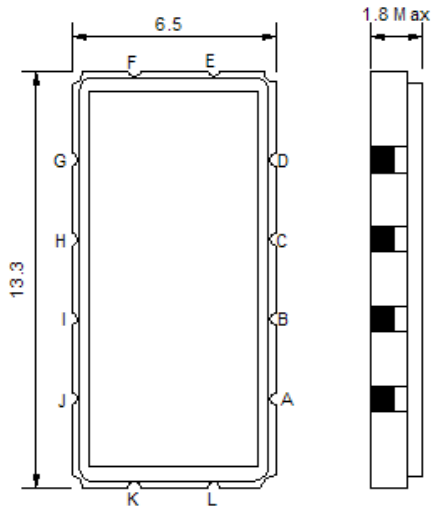
Notes

- o Electrostatic Sensitive Device (ESD) 
- o Avoid excessive ultrasonic exposure
- o Solderability compatible with JEDEC J-STD-020C Pb-free process, 260°C peak reflow temperature
- o This product complies with EU directive 2002/95/EC (RoHS compliance)



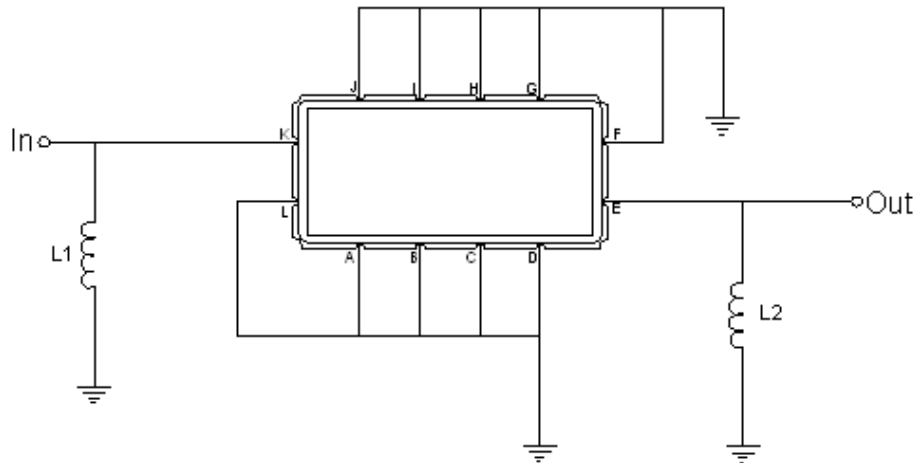


Mechanical Dimensions (mm)



Pin Description	
A, B, C, D, F, G, H, I, J, L	Ground
K	Input
E	Output

Test Circuit



Test Fixture & Values	
Input	L1=47nH
Output	L2=82nH
Source/Load Impedance	50 Ω



Maximum Ratings

Parameters Description	Unit	Minimum	Typical	Maximum
Operating Temperature Range	°C	-5	-	70
Storage Temperature Range	°C	-40	-	85
Maximum DC Voltage	V	-	-	10
Maximum Input Power	dBm	-	-	10
Source Impedance (single ended) ⁽¹⁾	Ω	-	50	-
Load Impedance (single ended) ⁽¹⁾	Ω	-	50	-

Notes: With Matching Network (Ref. Testing Environment Circuit as shown above).

Those impedances could be modified with different impedance values and/or structures, if necessary.

Electrical Specification

Parameters Description	Unit	Minimum	Typical	Maximum
Center Frequency (Fo)	MHz	66.5	66.6	66.7
Insertion Loss at Fo	dB	-	12.5	15.0
Temperature Coefficient	ppm/°C	-	-20	-
Amplitude Ripple within fo ±0.9 MHz	dB _{p-p}	-	0.1	0.5
Group Delay Variation within fo ±0.9 MHz	nsec	-	23	50
Absolute Delay at Fo	µsec	-	1.38	-
Bandwidth at -1.0 dB	MHz	1.8	2.88	-
Bandwidth at -3.0 dB	MHz	-	3.38	-
Bandwidth at -40.0 dB	MHz	-	5.36	5.6
Ultimate Attenuation:	-	40	48	-



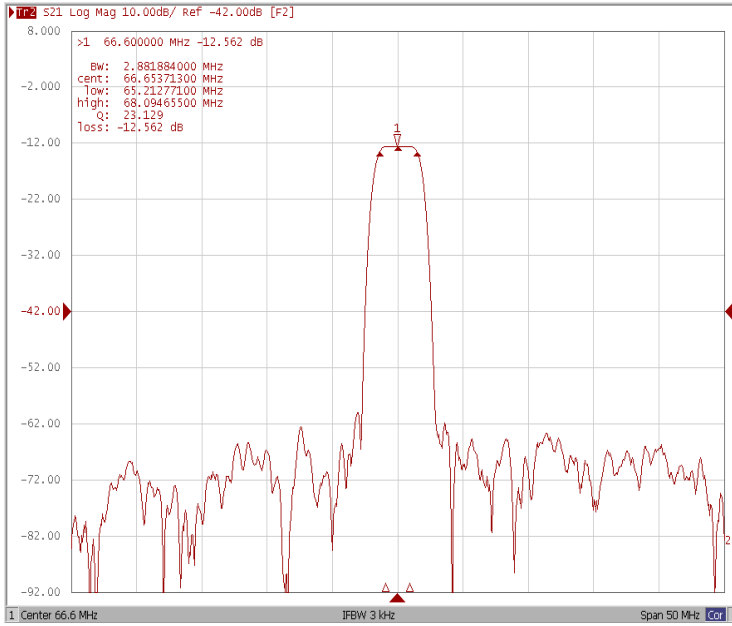
January 2011 Rev A

Oscilent Part Number 813-SL66.6M-02A

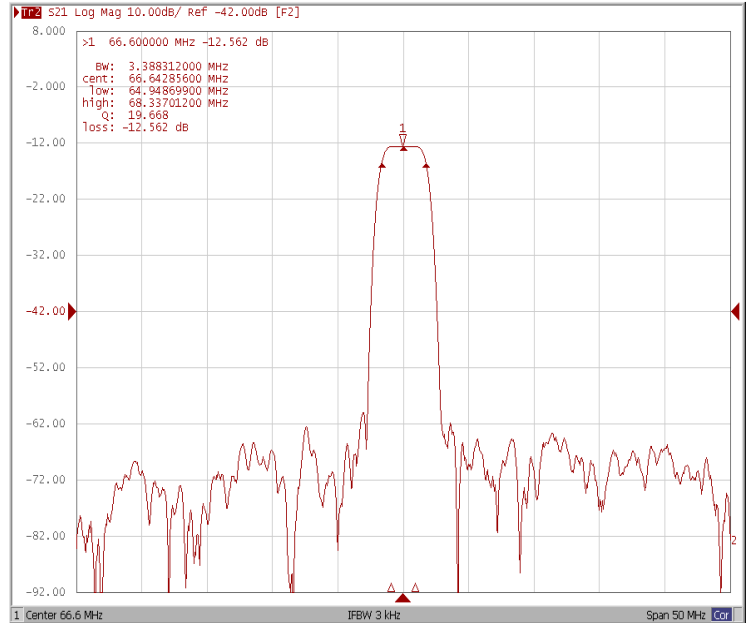
66.6MHz IF SAW Filter 2.88MHz Bandwidth

Frequency Response

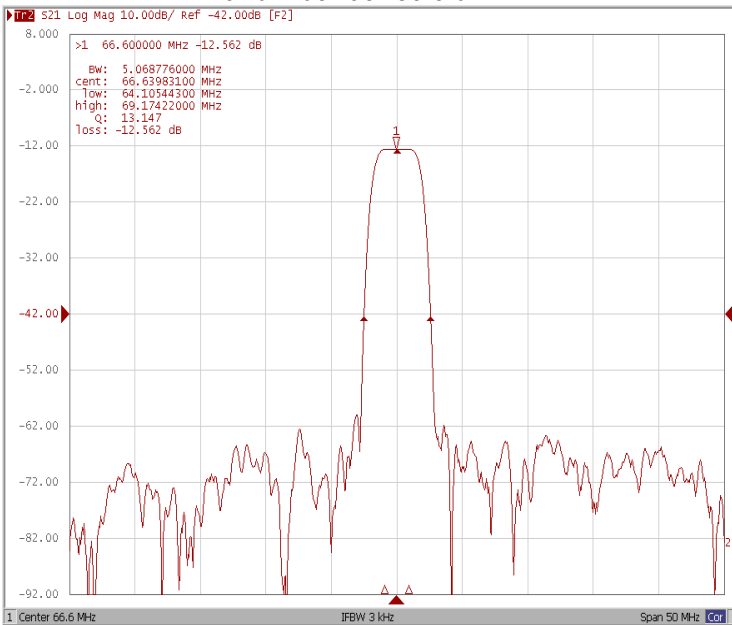
Bandwidth at -1.0 dB



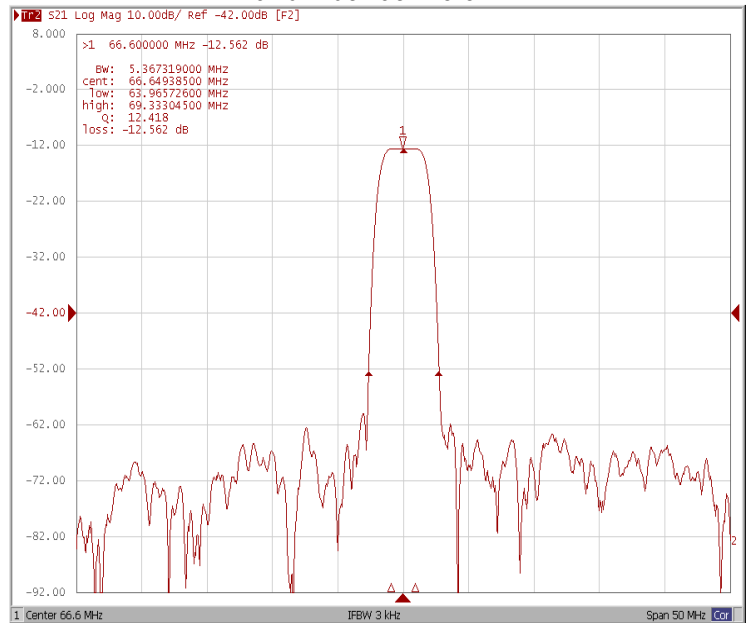
Bandwidth at -3.0 dB



Bandwidth at -30.0 dB

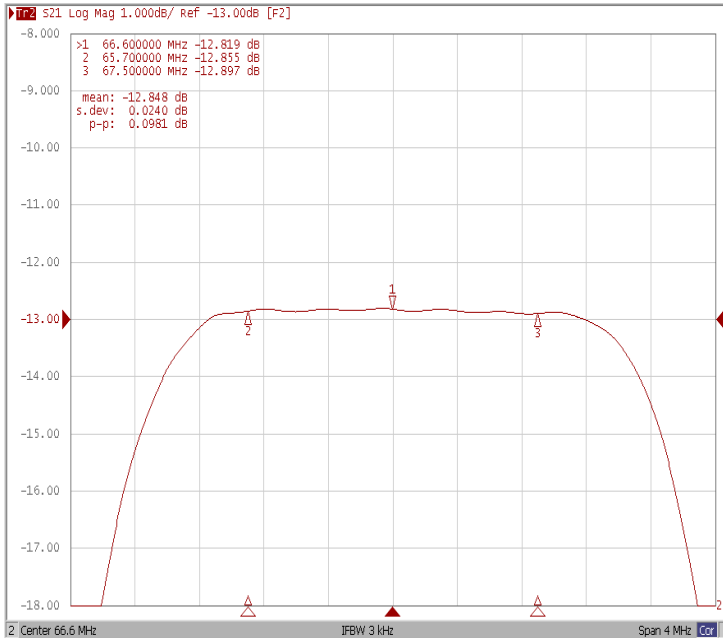


Bandwidth at -40.0

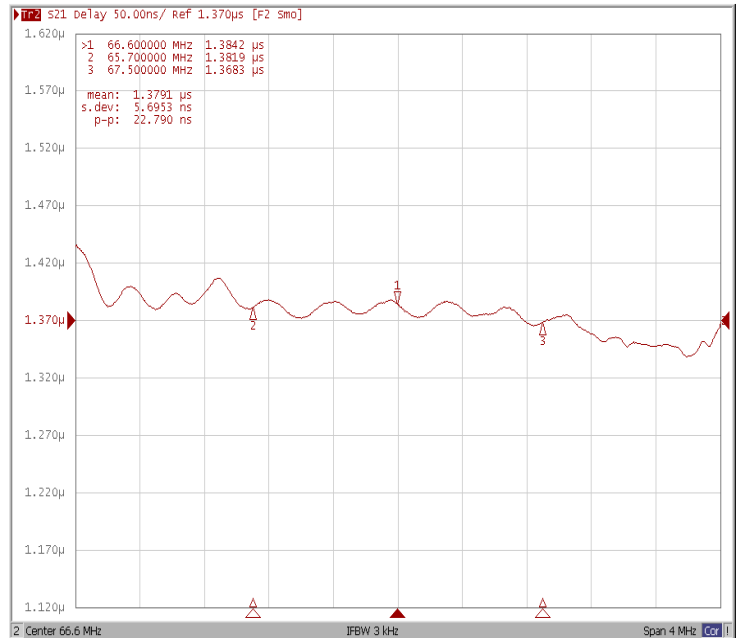




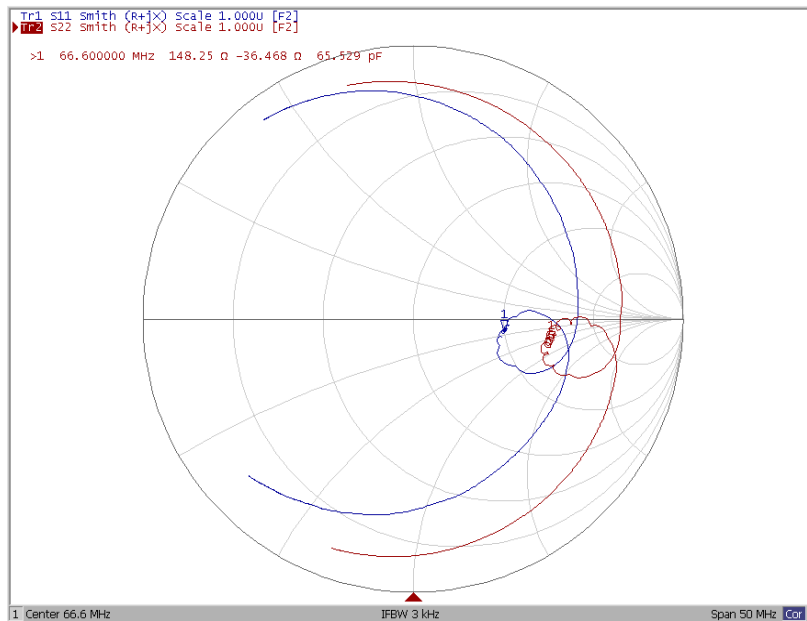
Ripple Variation Fo±0.9MHz



Group Delay Variation Fo±0.9MHz



Smith Chart





VSWR

