



PRODUCT SPECIFICATION

REV A January 2011

Oscilent Controlled Document

Ordering Code / Part Number	Product Description
813-SL63.8M-03A	63.8MHz IF SAW Filter 3.60MHz Bandwidth

Specification Contents

- o Mechanical Dimensions
- o Test Circuit
- o Maximum Ratings
- o Electrical Specification
- o Frequency Response
- o Smith Chart
- o VSWR

Notes

- o Electrostatic Sensitive Device (ESD) 
- o Avoid excessive ultrasonic exposure
- o Solderability compatible with JEDEC J-STD-020C Pb-free process, 260°C peak reflow temperature
- o This product complies with EU directive 2002/95/EC (RoHS compliance)



Oscilent Corporation
Telephone: 1.949.252.0522
Fax: 1.949.252.0522
Email: sales@oscilent.com

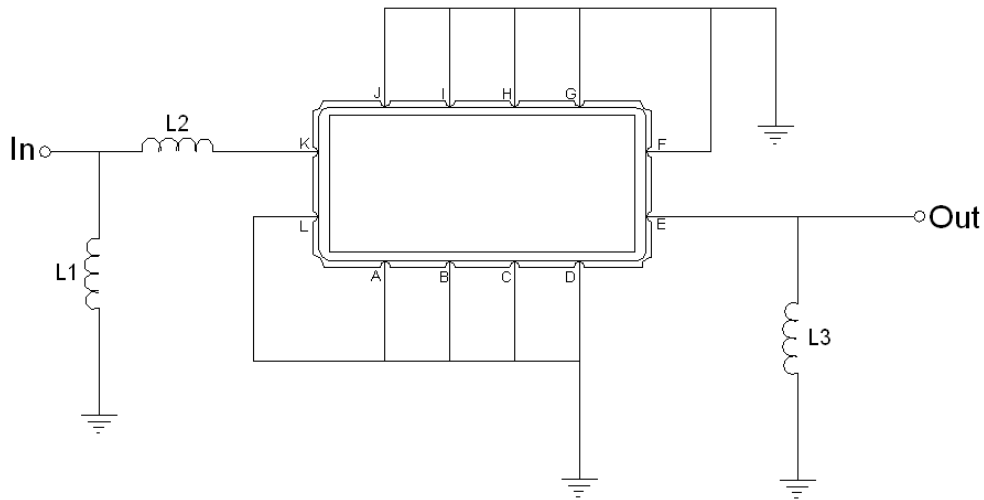


Mechanical Dimensions (mm)



Pin Description	
A, B, C, D, F, G, H, I, J, L	Ground
K	Input
E	Output

Test Circuit



Test Fixture & Values	
Input	L1 = 68 nH, L2 = 12nH
Output	L3 = 56 nH
Source/Load Impedance	50 Ω



Maximum Ratings

Parameters Description	Unit	Minimum	Typical	Maximum
Operating Temperature Range	°C	-5	-	65
Storage Temperature Range	°C	-40	-	85
Maximum DC Voltage	V	-	-	10
Maximum Input Power	dBm	-	-	10
Source Impedance (single ended) ⁽¹⁾	Ω	-	50	-
Load Impedance (single ended) ⁽¹⁾	Ω	-	50	-

Notes: With Matching Network (Ref. Testing Environment Circuit as shown above).

Those impedances could be modified with different impedance values and/or structures, if necessary.

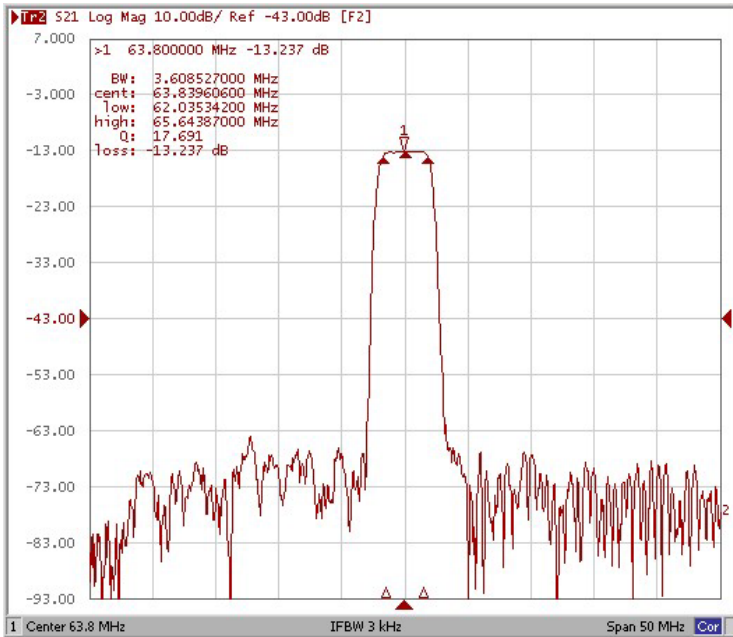
Electrical Specification

Parameters Description	Unit	Minimum	Typical	Maximum
Center Frequency (Fo)	MHz	63.70	63.80	63.90
Insertion Loss at Fo	dB	-	13.30	15.00
Group Delay Variation (Fo±1.50MHz)	ns	-	35	70
Absolute Delay Time at Fo	us	-	1.68	1.80
Temperature Coefficient	ppm/°C	-	-18	-
Amplitude Ripple (Fo±1.50MHz)	dB	-	0.30	0.80
Bandwidth at -1dB	MHz	3.30	3.60	-
Bandwidth at -3dB	MHz	3.80	4.06	-
Bandwidth at -25dB	MHz	-	5.32	5.50
Bandwidth at -40dB	MHz	-	5.83	6.05
Ultimate Rejection	dB	45	50	-

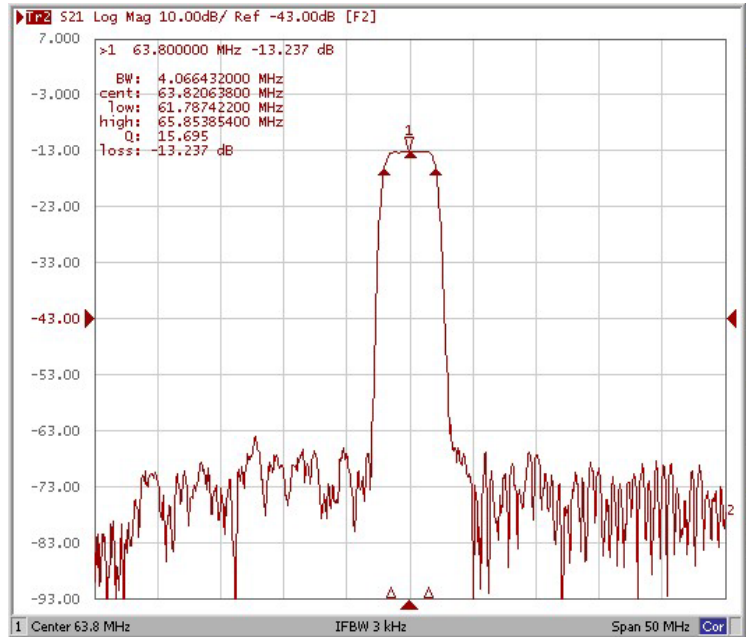


Frequency Response

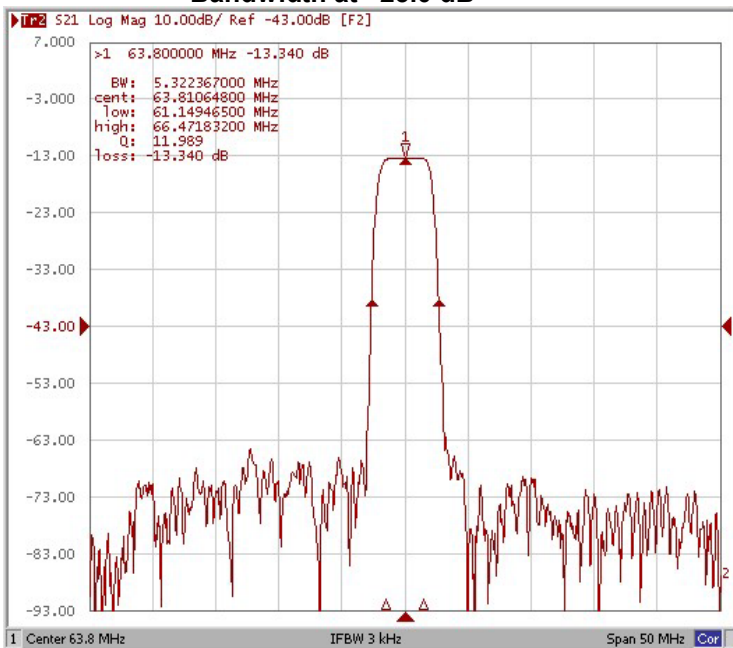
Bandwidth at -1.0 dB



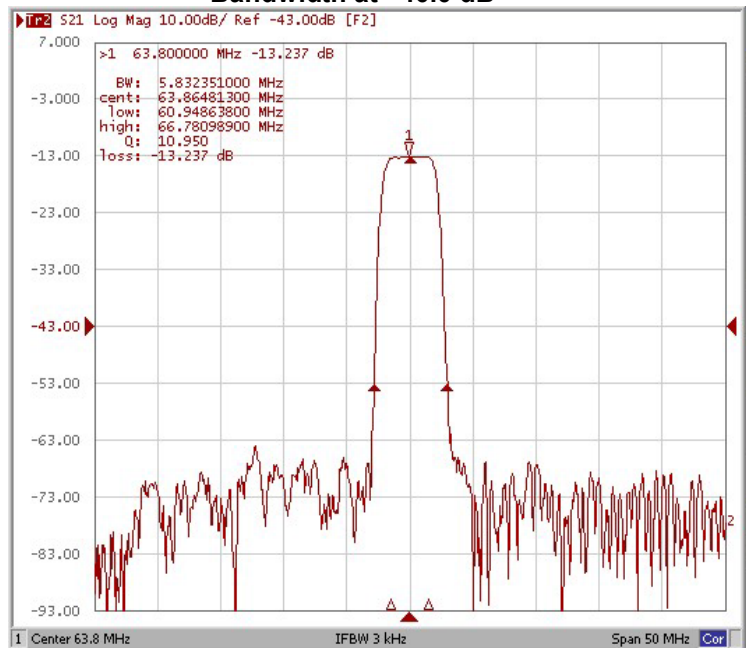
Bandwidth at -3.0 dB



Bandwidth at -25.0 dB

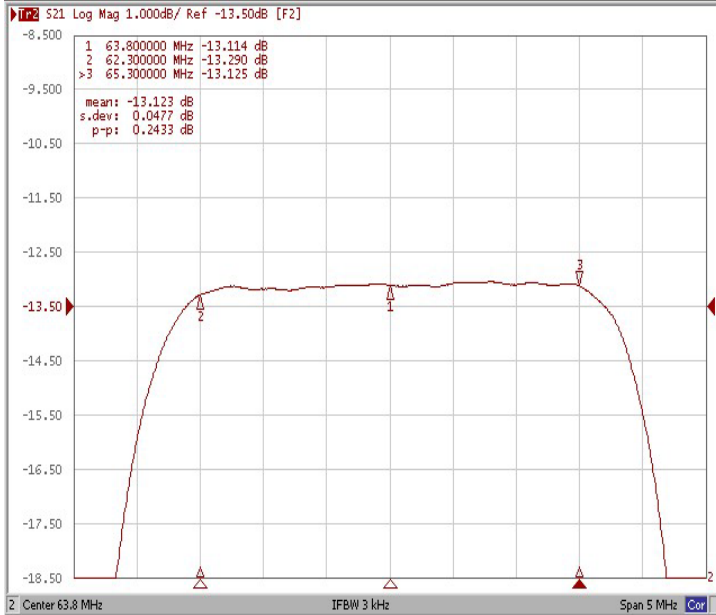


Bandwidth at -40.0 dB

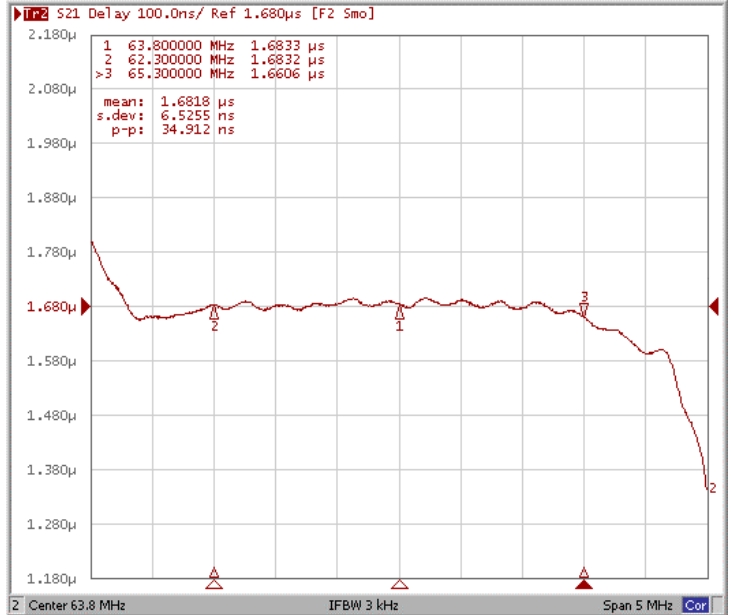




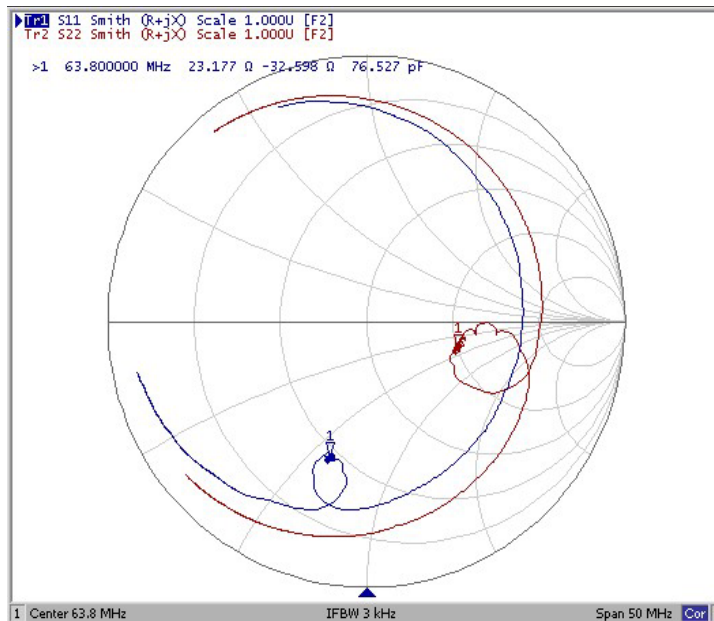
Ripple Variation Fo±1.50MHz



Group Delay Variation Fo±1.50MHz



Smith Chart





VSWR

