



REV A January 2011

Oscilent Controlled Document

Ordering Code / Part Number	Product Description
813-IF62.5M-20B	62.5 MHz IF SAW Filter 20.5 MHz Bandwidth

Specification Contents

- o Mechanical Dimensions
- o Test Circuit
- o Maximum Ratings
- o Electrical Specification
- o Frequency Response

Notes

- o Electrostatic Sensitive Device (ESD) 
- o Avoid excessive ultrasonic exposure
- o Solderability compatible with JEDEC J-STD-020C Pb-free process, 260°C peak reflow temperature
- o This product complies with EU directive 2002/95/EC (RoHS compliance)



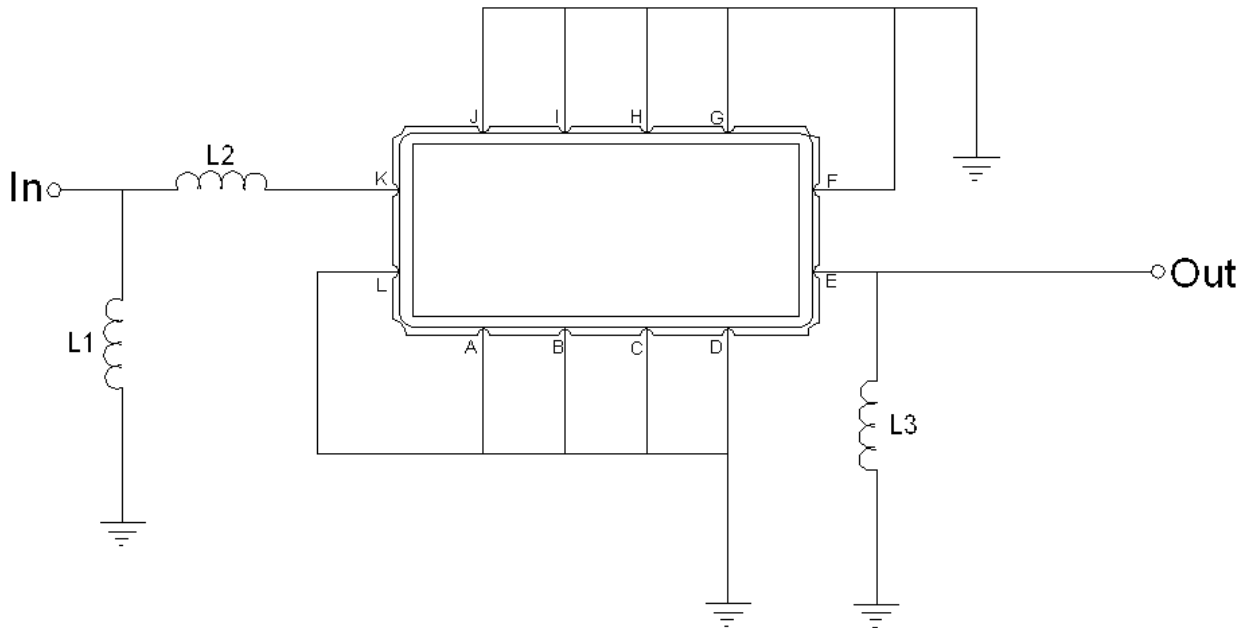


Mechanical Dimensions (mm)



Pin Description	
A, B, C, D, F, G, H, I, J, L	Ground
K	Input
E	Output

Test Circuit



Test Fixture & Values	
Input	L1 = 120 nH, L2 = 27 nH
Output	L3 = 100 nH
Source/Load Impedance	50 Ω



Maximum Ratings

Parameters Description	Unit	Minimum	Typical	Maximum
Operating Temperature Range	°C	-30	-	80
Storage Temperature Range	°C	-40	-	85
Maximum DC Voltage	V	-	-	10
Maximum Input Power	dBm	-	-	10
Source Impedance (single ended) ⁽¹⁾	Ω	-	50	-
Load Impedance (single ended) ⁽¹⁾	Ω	-	50	-

Notes: With Matching Network (Ref. Testing Environment Circuit as shown above).

Those impedances could be modified with different impedance values and/or structures, if necessary.

Electrical Specification

Parameters Description	Unit	Minimum	Typical	Maximum
Center Frequency (Fo)	MHz	-	62.50	-
Insertion Loss at Fo	dB	-	14.2	15.5
Group Delay Variation at Fo±9.75MHz	nsec	-	35	50
Absolute Delay at Fo	usec	-	1.12	-
Passband Ripple Variation	dB	-	0.3	1.0
Bandwidth at -1dB	MHz	20	20.5	-
Bandwidth at -3dB	MHz	21	21.3	-
Bandwidth at -38dB	MHz	-	24.3	25
Ultimate Rejection	dB	40	45	-



Frequency Response

