



PRODUCT SPECIFICATION

REV A January 2011

Oscilent Controlled Document

Ordering Code / Part Number	Product Description
813-IF62.5M-14C	62.5MHz IF SAW Filter 14.60 MHz Bandwidth

Specification Contents

- o Mechanical Dimensions
- o Test Circuit
- o Maximum Ratings
- o Electrical Specification
- o Frequency Response
- o Smith Chart
- o VSWR

Notes

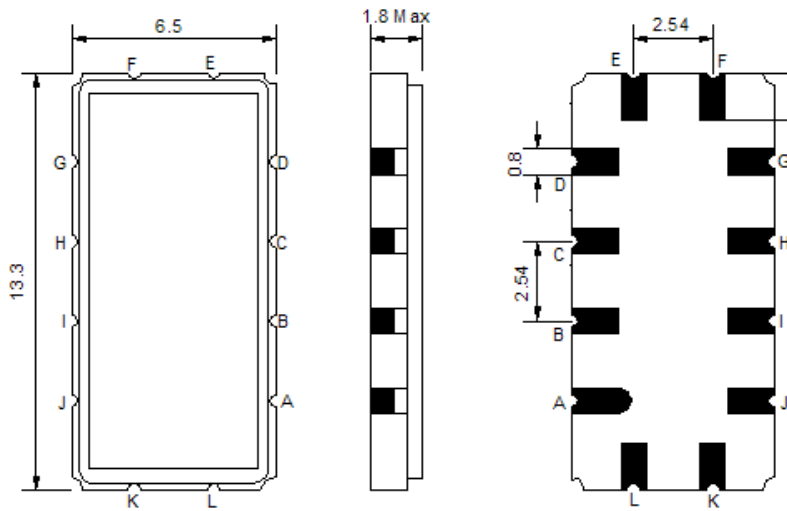
- o Electrostatic Sensitive Device (ESD) 
- o Avoid excessive ultrasonic exposure
- o Solderability compatible with JEDEC J-STD-020C Pb-free process, 260°C peak reflow temperature
- o This product complies with EU directive 2002/95/EC (RoHS compliance)



Oscilent Corporation
Telephone: 1.949.252.0522
Fax: 1.949.252.0522
Email: sales@oscilent.com

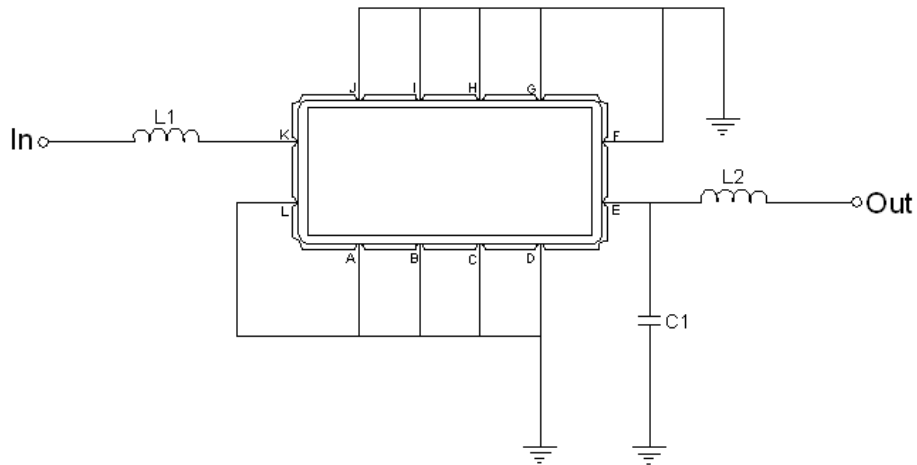


Mechanical Dimensions (mm)



Pin Description	
A, B, C, D, F, G, H, I, J, L	Ground
K	Input
E	Output

Test Circuit



Test Fixture & Values	
Input	L1=220 nH
Output	L2=220 nH, C1=16pF
Source/Load Impedance	50 Ω



Maximum Ratings

Parameters Description	Unit	Minimum	Typical	Maximum
Operating Temperature Range	°C	-	25	-
Storage Temperature Range	°C	-40	-	85
Maximum DC Voltage	V	-	-	10
Maximum Input Power	dBm	-	-	10
Source Impedance (single ended) ⁽¹⁾	Ω	-	50	-
Load Impedance (single ended) ⁽¹⁾	Ω	-	50	-

Notes: With Matching Network (Ref. Testing Environment Circuit as shown above).

Those impedances could be modified with different impedance values and/or structures, if necessary.

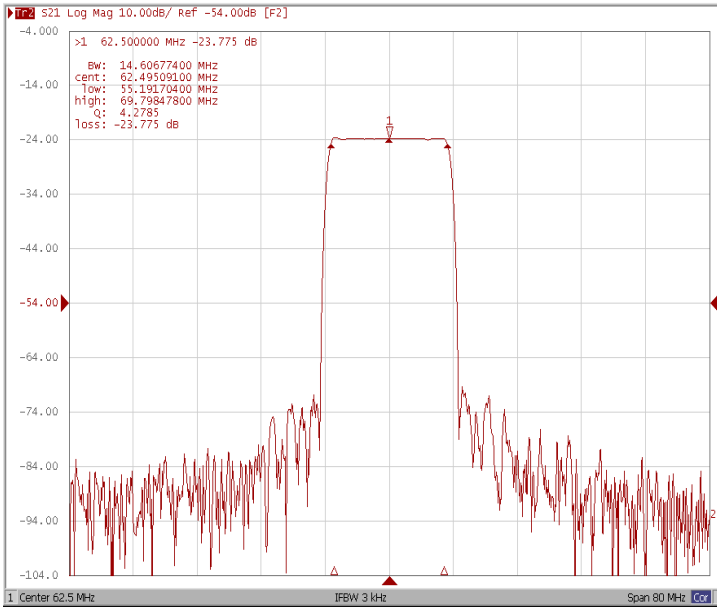
Electrical Specification

Parameters Description	Unit	Minimum	Typical	Maximum
Center Frequency (Fo)	MHz	-	62.5	-
Insertion Loss at Fo	dB	-	23.8	25.0
Group Delay Variation (Fo±6.82MHz)	ns	-	30	80
Absolute Delay Time at Fo	us	-	1.7	-
Temperature Coefficient	ppm/°C	-	-72	-
Amplitude Ripple (Fo±6.82MHz)	dB	-	0.5	1.0
Bandwidth at -1dB	MHz	14.40	14.60	-
Bandwidth at -3dB	MHz	-	15.10	-
Bandwidth at -40dB	MHz	-	17.10	17.30
Relative Attenuation				
Fo±8.5MHz	dB	28	33	-
Lower sidelobe	dB	40	46	-
Upper sidelobe	dB	40	46	-

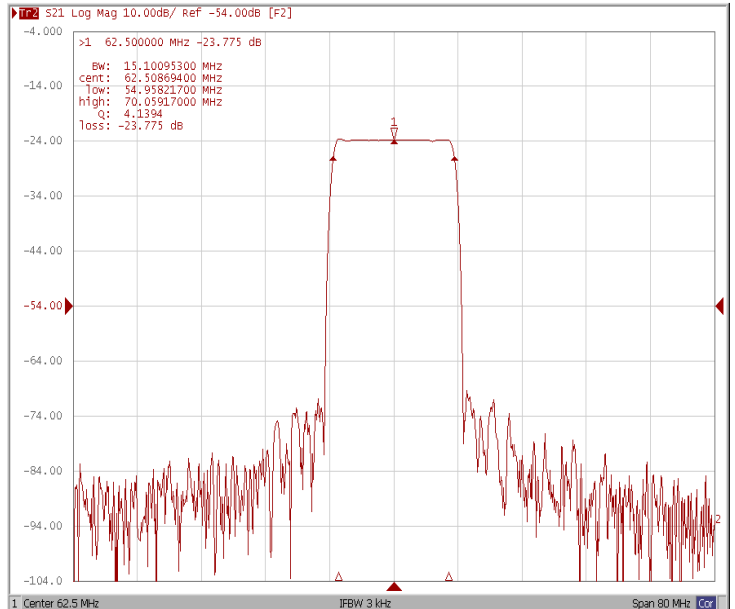


Frequency Response

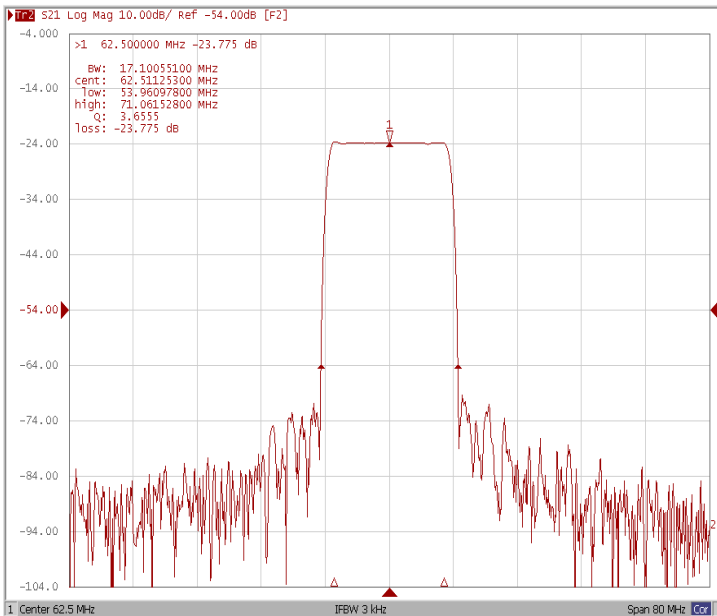
Bandwidth at -1.0 dB



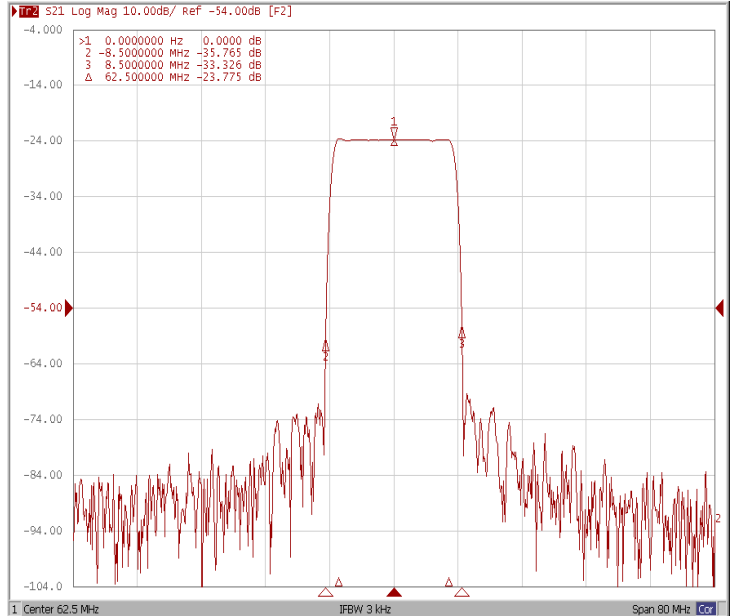
Bandwidth at -3.0 dB



Bandwidth at -40.0 dB



Attenuation Fo ±8.5MHz

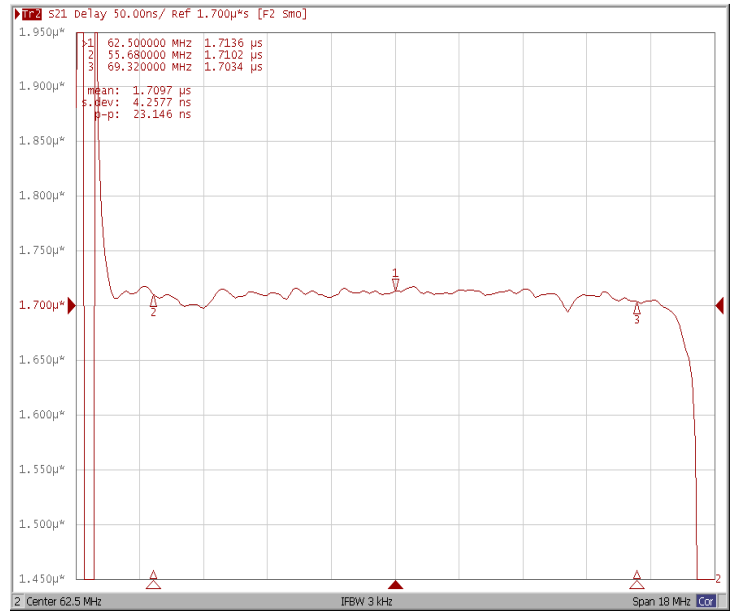




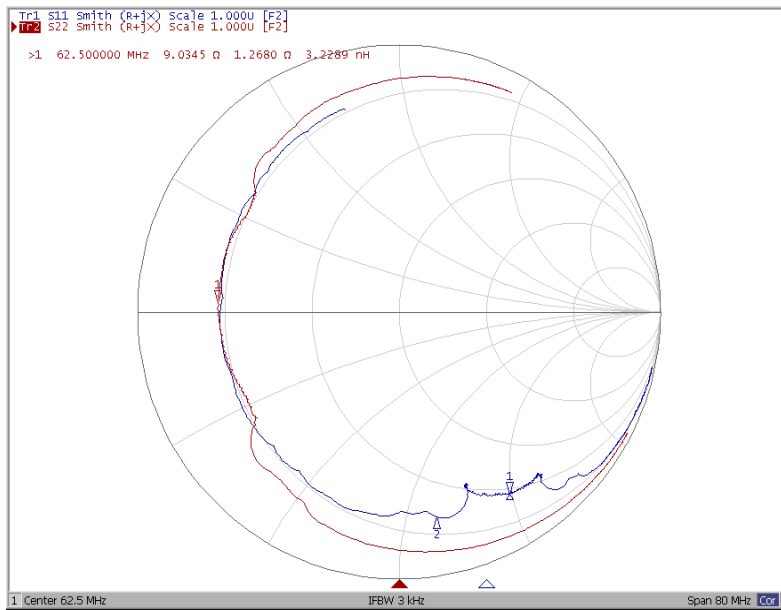
Ripple Variation Fo±6.82MHz



Group Delay Variation Fo±6.82MHz



Smith Chart





VSWR

