



PRODUCT SPECIFICATION

REV A January 2011

Oscilent Controlled Document

Ordering Code / Part Number	Product Description
813-SL62.5M-06A	62.5MHz IF SAW Filter 6.47MHz Bandwidth

Specification Contents

- o Mechanical Dimensions
- o Test Circuit
- o Maximum Ratings
- o Electrical Specification
- o Frequency Response
- o Smith Chart
- o VSWR

Notes

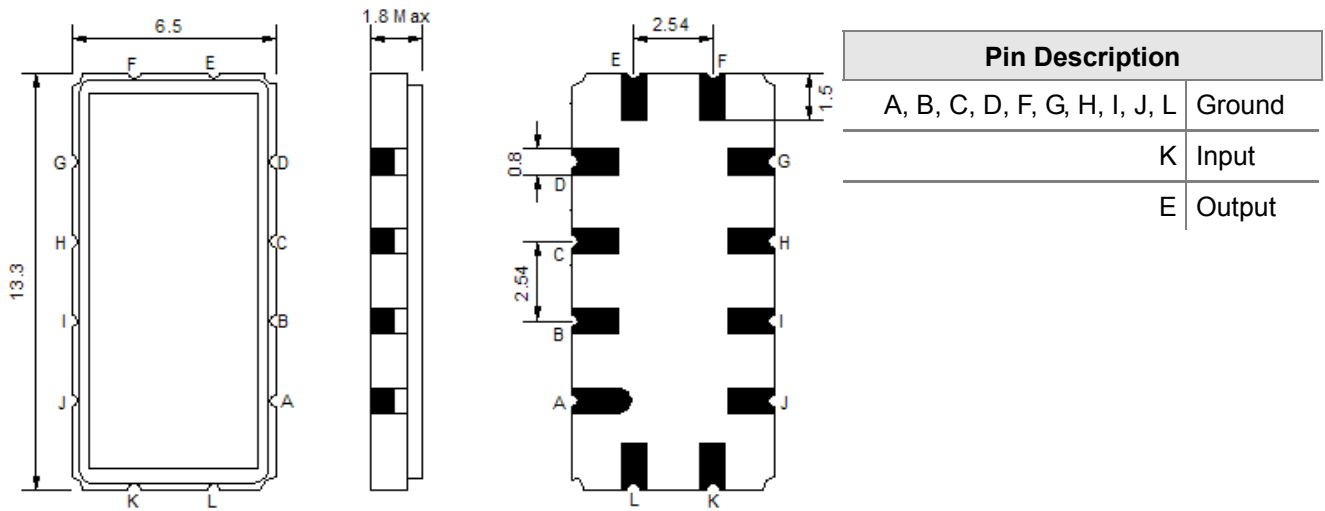
- o Electrostatic Sensitive Device (ESD) 
- o Avoid excessive ultrasonic exposure
- o Solderability compatible with JEDEC J-STD-020C Pb-free process, 260°C peak reflow temperature
- o This product complies with EU directive 2002/95/EC (RoHS compliance)



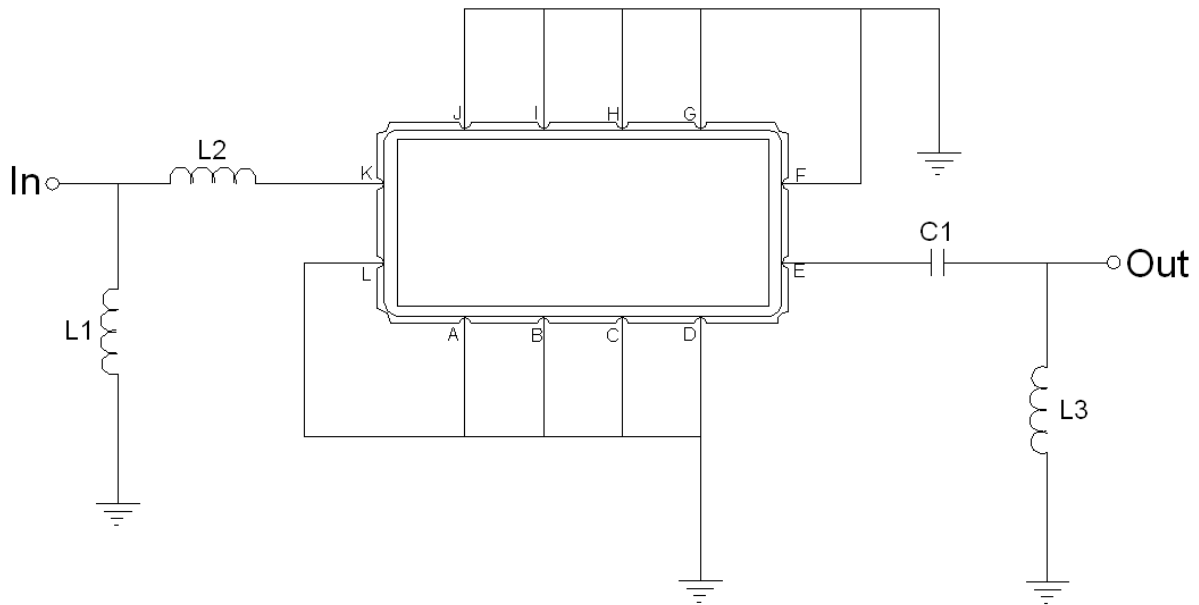
Oscilent Corporation
Telephone: 1.949.252.0522
Fax: 1.949.252.0522
Email: sales@oscilent.com



Mechanical Dimensions (mm)



Test Circuit



Test Fixture & Values	
Input	L1=82nH, L2=27nH
Output	C1=330pF, L3=180nH
Source/Load Impedance	50 Ω

**Maximum Ratings**

Parameters Description	Unit	Minimum	Typical	Maximum
Operating Temperature Range	°C	-20	-	70
Storage Temperature Range	°C	-40	-	85
Maximum DC Voltage	V	-	-	10
Maximum Input Power	dBm	-	-	10
Source Impedance (single ended) ⁽¹⁾	Ω	-	50	-
Load Impedance (single ended) ⁽¹⁾	Ω	-	50	-

Notes: With Matching Network (Ref. Testing Environment Circuit as shown above).

Those impedances could be modified with different impedance values and/or structures, if necessary.

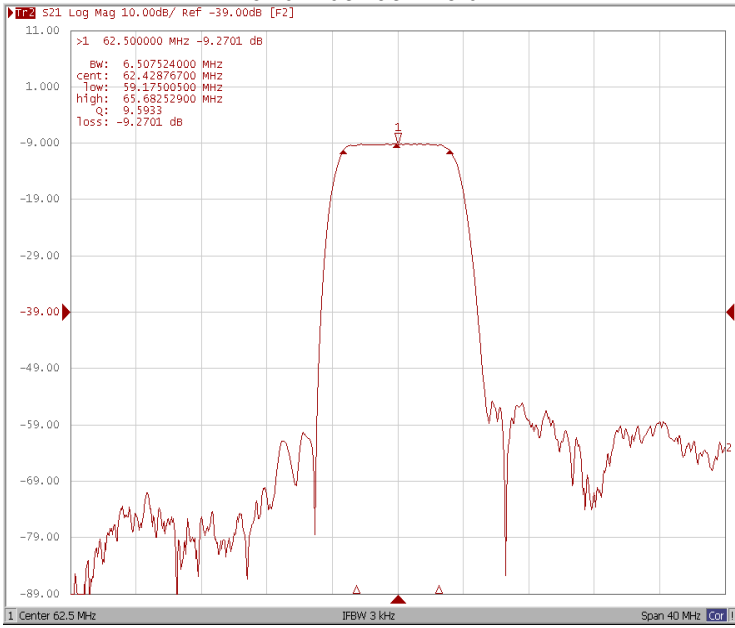
Electrical Specification

Parameters Description	Unit	Minimum	Typical	Maximum
Center Frequency (Fo)	MHz	-	62.5	-
Insertion Loss at Fo	dB	-	9.30	11.00
Temperature Coefficient	ppm/°C	-	-86	-
Amplitude Ripple within fo ±2.5 MHz	dB _{p-p}	-	0.30	0.60
Group Delay Variation within fo ±2.5 MHz	nsec	-	70	120
Absolute Delay at Fo	µsec	-	1.23	-
Bandwidth at -1.0 dB	MHz	6.00	6.47	-
Bandwidth at -3.0 dB	MHz	-	7.15	-
Bandwidth at -40.0 dB	MHz	-	10.00	10.50
Relative Attenuation:				
Lower Sidelobe	dB	48	52	-
Upper Sidelobe	dB	40	45	-

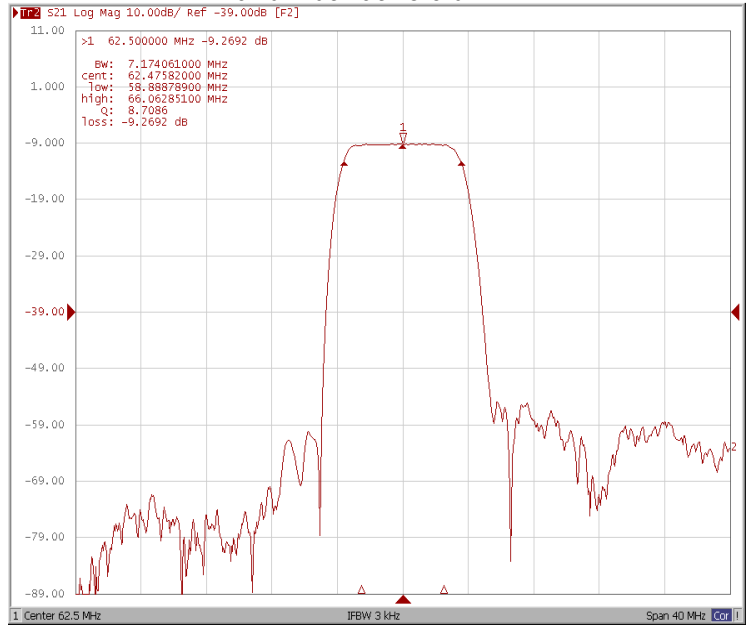


Frequency Response

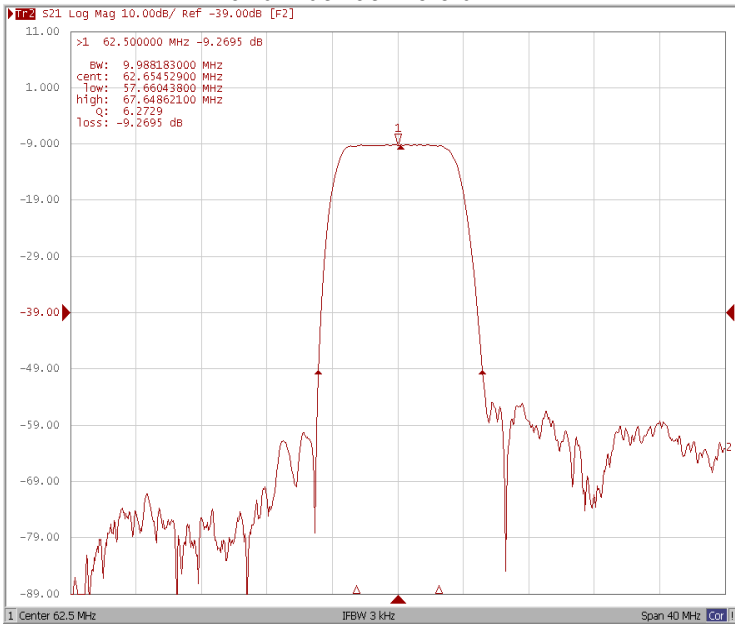
Bandwidth at -1.0 dB



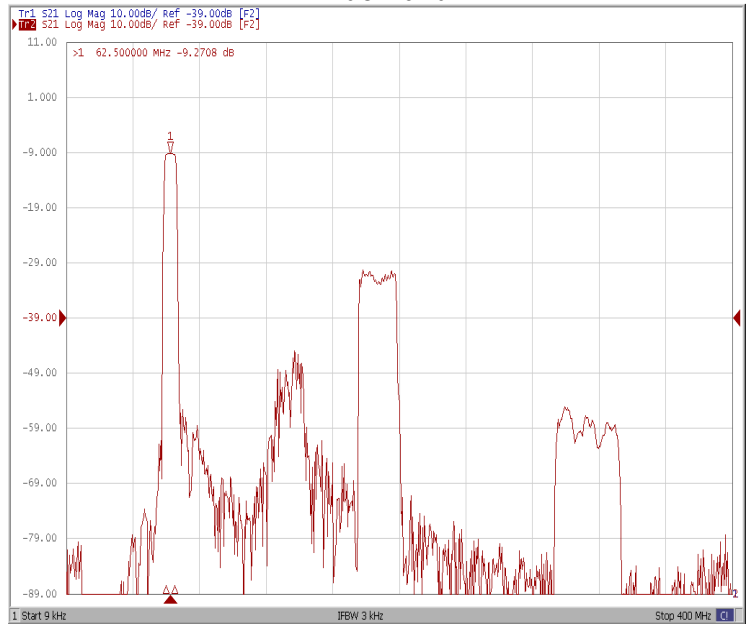
Bandwidth at -3.0 dB



Bandwidth at -40.0 dB

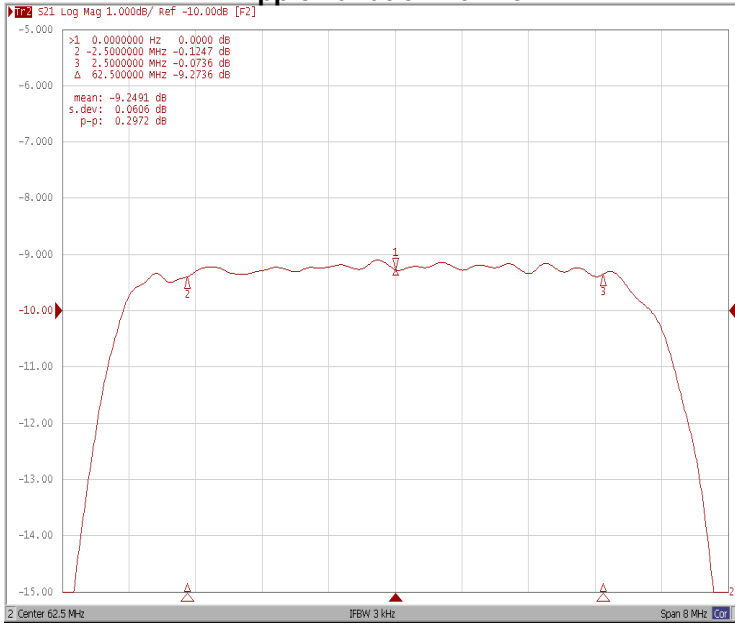


Wide-Band

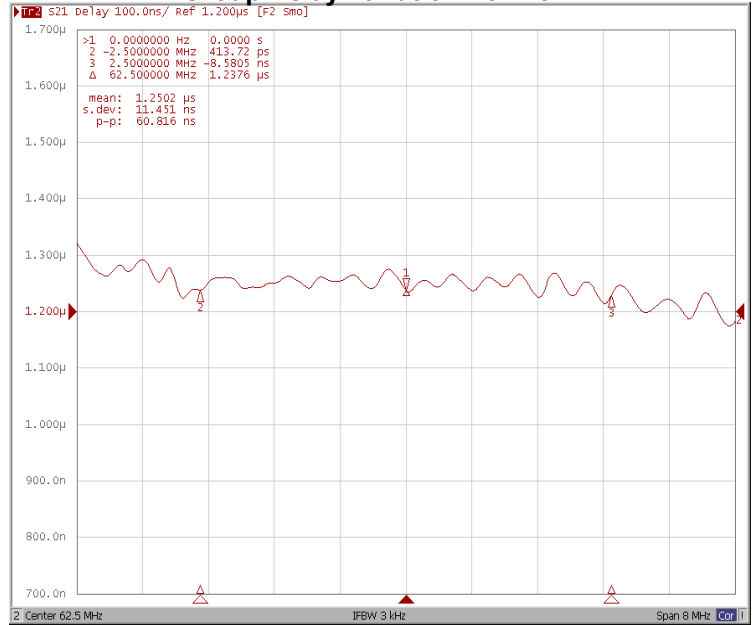




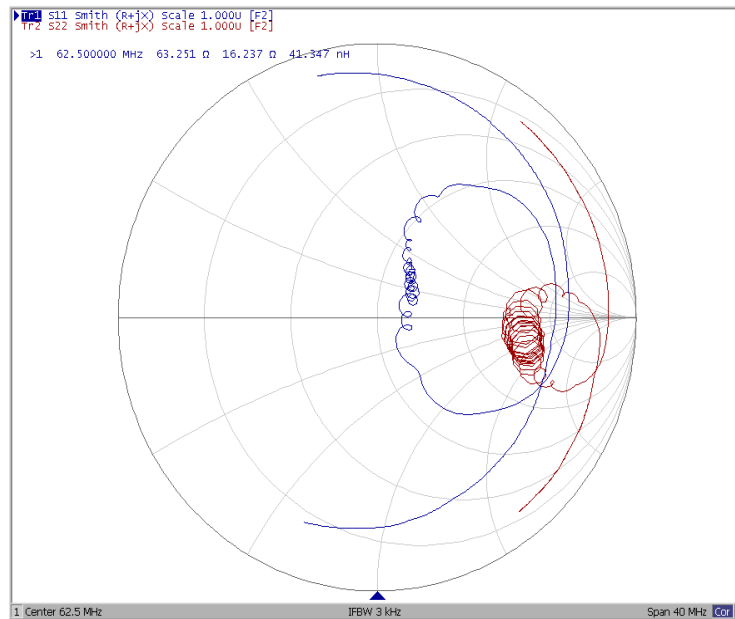
Ripple Variation Fo±2.5MHz



Group Delay Variation Fo±2.5MHz



Smith Chart





VSWR

