



REV A January 2011

Oscilent Controlled Document

Ordering Code / Part Number	Product Description
813-IF264.0M-15A	264.0MHz IF SAW Filter 15.35MHz Bandwidth

### Specification Contents

- o Mechanical Dimensions
- o Test Circuit
- o Maximum Ratings
- o Electrical Specification
- o Frequency Response
- o Smith Chart
- o VSWR

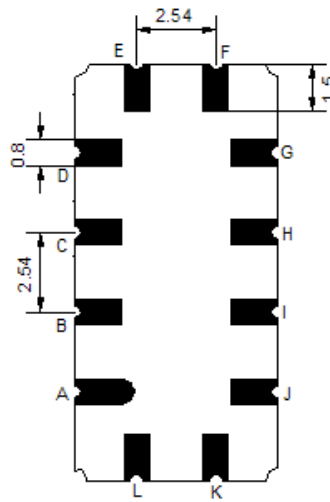
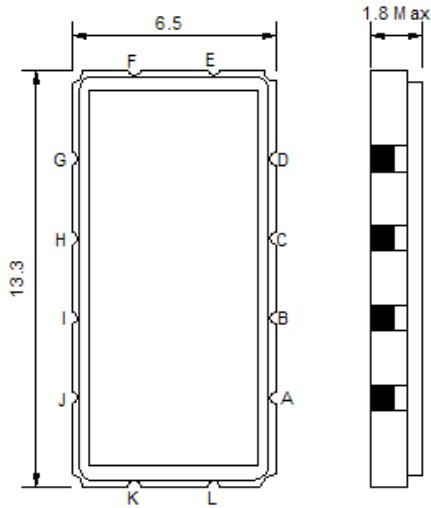
### Notes

- o Electrostatic Sensitive Device (ESD) 
- o Avoid excessive ultrasonic exposure
- o Solderability compatible with JEDEC J-STD-020C Pb-free process, 260°C peak reflow temperature
- o This product complies with EU directive 2002/95/EC (RoHS compliance)



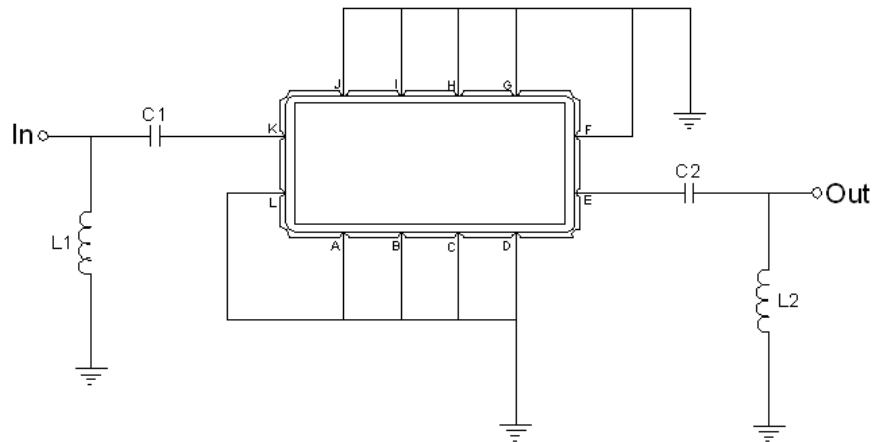


## Mechanical Dimensions (mm)



Pin Description	
A, B, C, D, F, G, H, I, J, L	Ground
K	Input
E	Output

## Test Circuit



Test Fixture & Values	
Input	L1 = 8.2 nH, C1 = 75 pF
Output	L2 = 18 nH, C2 = 33 pF
Source/Load Impedance	50 Ω

**Maximum Ratings**

Parameters Description	Unit	Minimum	Typical	Maximum
Operating Temperature Range	°C	-20	-	70
Storage Temperature Range	°C	-40	-	85
Maximum DC Voltage	V	-	-	10
Maximum Input Power	dBm	-	-	10
Source Impedance (single ended) <sup>(1)</sup>	Ω	-	50	-
Load Impedance (single ended) <sup>(1)</sup>	Ω	-	50	-

Notes: With Matching Network (Ref. Testing Environment Circuit as shown above).

Those impedances could be modified with different impedance values and/or structures, if necessary.

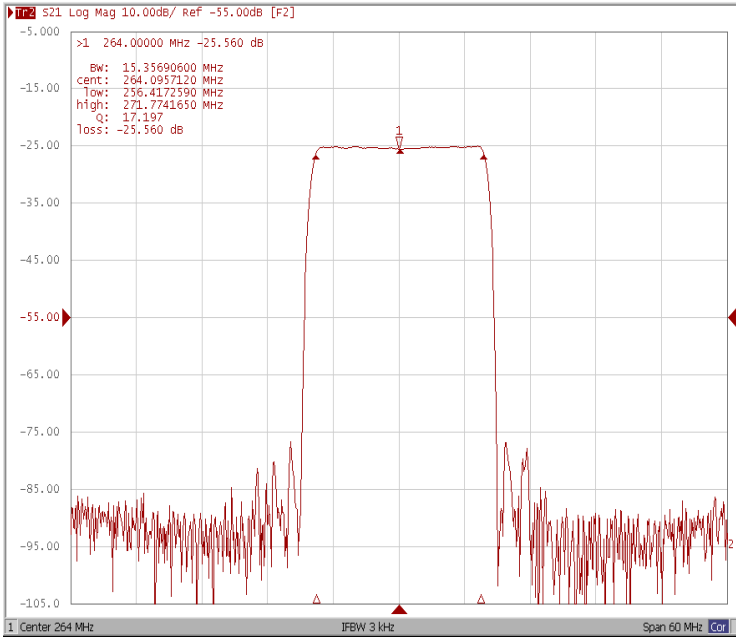
**Electrical Specification**

Parameters Description	Unit	Minimum	Typical	Maximum
Center Frequency (Fo)	MHz	-	264.0	-
Insertion Loss at Fo	dB	-	25.5	28.0
Group Delay Variation	ns	-	38	80
Absolute Delay at Fo	us	-	2.02	-
Amplitude Ripple	dB	-	0.60	1.00
Bandwidth at -1dB	MHz	15.00	15.35	-
Bandwidth at -3dB	MHz	-	15.78	-
Bandwidth at -25dB	MHz	-	17.25	17.50
Bandwidth at -40dB	MHz	-	17.66	17.90
Relative Attenuation				
Lower Sidelobe	dB	48	52	-
Upper Sidelobe	dB	48	52	-
Temperature Coefficient	ppm/°C	-	-20	-

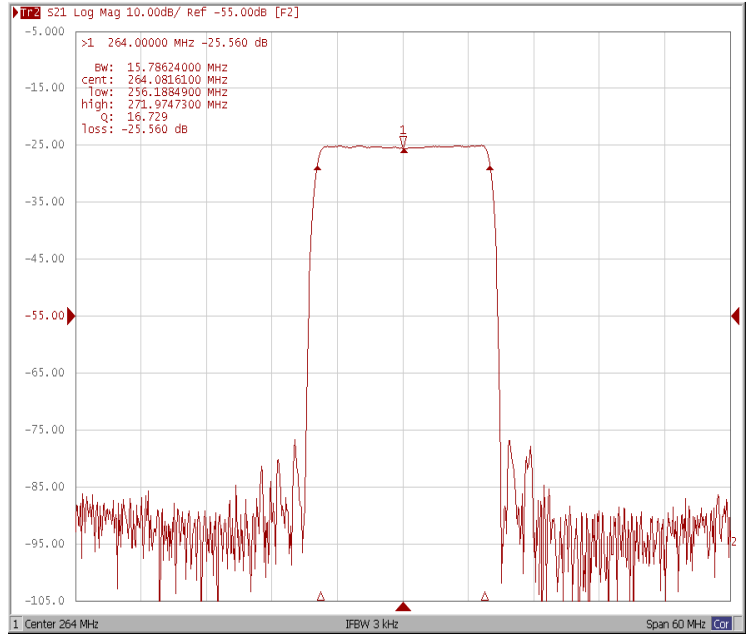


## Frequency Response

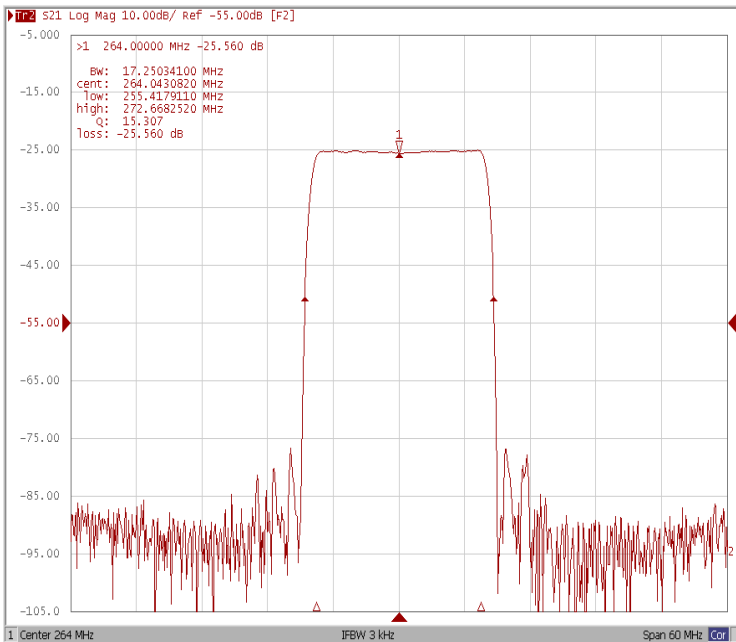
### Bandwidth at -1.0 dB



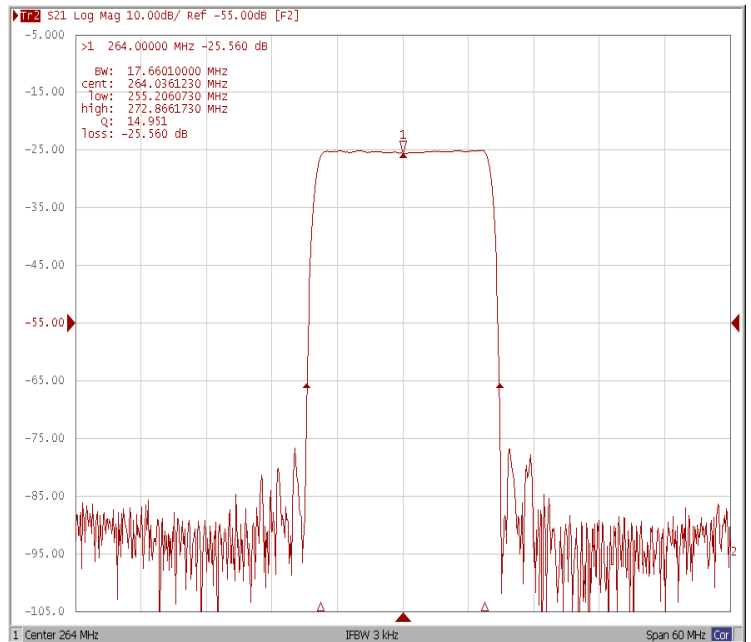
### Bandwidth at -3.0 dB



### Bandwidth at -25.0 dB

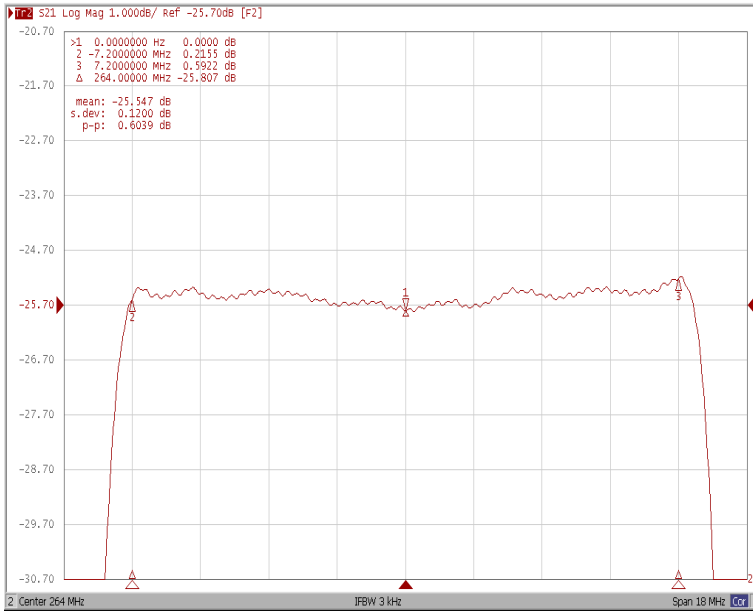


### Bandwidth at -40.0 dB

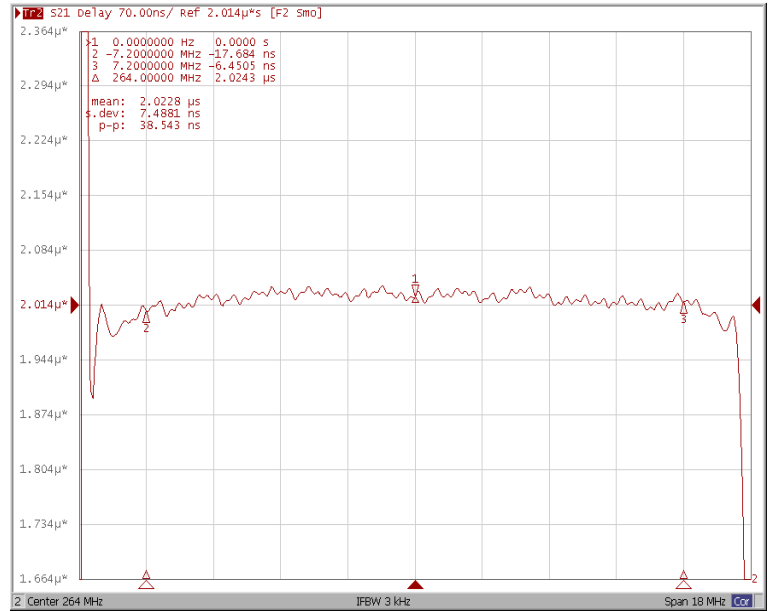




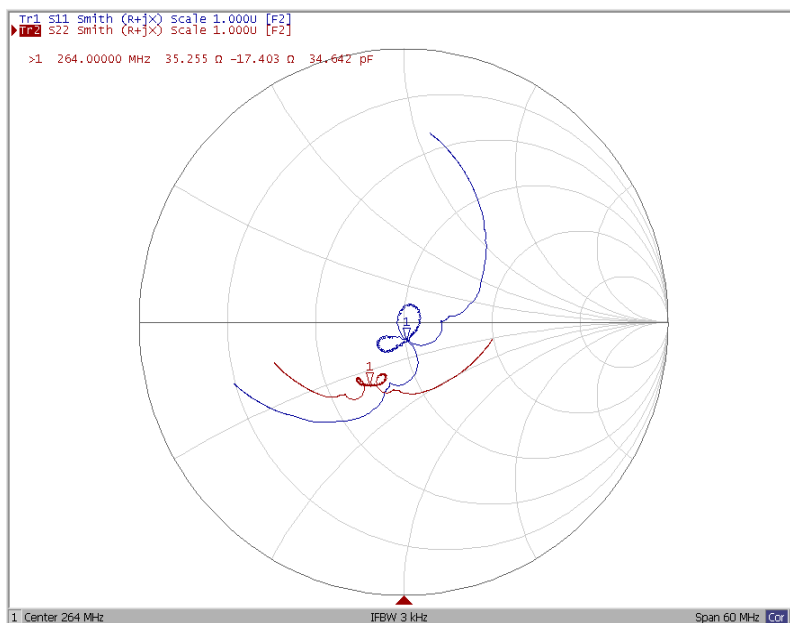
### Ripple Variation



### Group Delay Variation



### Smith Chart





### VSWR

