



# PRODUCT SPECIFICATION

REV A January 2011

Oscilent Controlled Document

Ordering Code / Part Number	Product Description
813-IF160.0M-16C	60.0 MHz IF SAW Filter 16.26 MHz Bandwidth

## Specification Contents

- o Mechanical Dimensions
- o Test Circuit
- o Maximum Ratings
- o Electrical Specification
- o Frequency Response
- o Smith Chart
- o VSWR

## Notes

- o Electrostatic Sensitive Device (ESD) 
- o Avoid excessive ultrasonic exposure
- o Solderability compatible with JEDEC J-STD-020C Pb-free process, 260°C peak reflow temperature
- o This product complies with EU directive 2002/95/EC (RoHS compliance)



Oscilent Corporation  
Telephone: 1.949.252.0522  
Fax: 1.949.252.0522  
Email: sales@oscilent.com

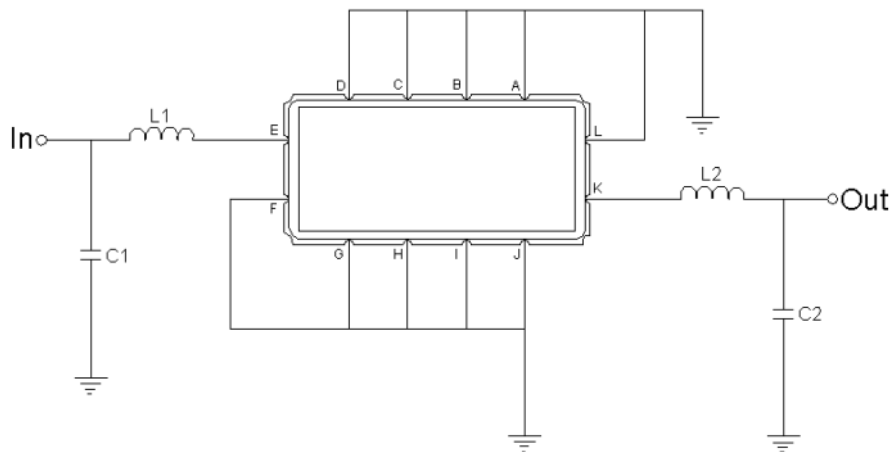


## Mechanical Dimensions (mm)



Pin Description	
A, B, C, D, F, G, H, I, J, L	Ground
K	Input
E	Output

## Test Circuit



Test Fixture & Values	
Input	L1 = 8.2 nH, C1 = 10 pF
Output	L2 = 22 nH, C2 = 10 pF
Source/Load Impedance	50 Ω



## Maximum Ratings

Parameters Description	Unit	Minimum	Typical	Maximum
Operating Temperature Range	°C	-5	-	70
Storage Temperature Range	°C	-40	-	85
Maximum DC Voltage	V	-	-	10
Maximum Input Power	dBm	-	-	10
Source Impedance (single ended) <sup>(1)</sup>	Ω	-	50	-
Load Impedance (single ended) <sup>(1)</sup>	Ω	-	50	-

Notes: With Matching Network (Ref. Testing Environment Circuit as shown above).

Those impedances could be modified with different impedance values and/or structures, if necessary.

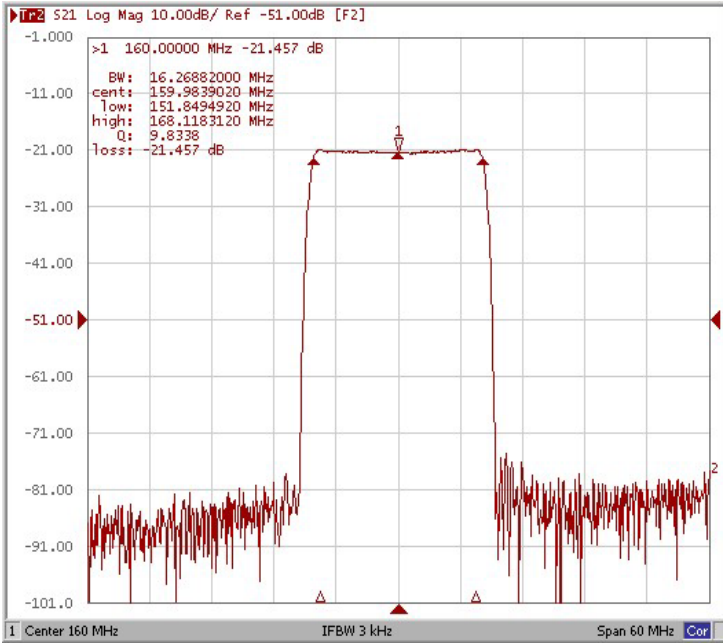
## Electrical Specification

Parameters Description	Unit	Minimum	Typical	Maximum
Center Frequency (Fo)	MHz	-	160.0	-
Insertion Loss at Fo	dB	-	21.4	23.5
Group Delay Variation at Fo ± 7.50 MHz	nsec	-	42	80
Absolute Delay at Fo	usec	-	1.61	-
Passband Ripple Variation at Fo ± 7.50 MHz	dB	-	0.70	1.0
Bandwidth at -1dB	MHz	16.10	16.26	-
Bandwidth at -3dB	MHz	-	16.67	-
Bandwidth at -40dB	MHz	-	18.52	18.70
Ultimate Rejection	dB	50	55	-
Temperature Coefficient	ppm/°C	-	-72	-

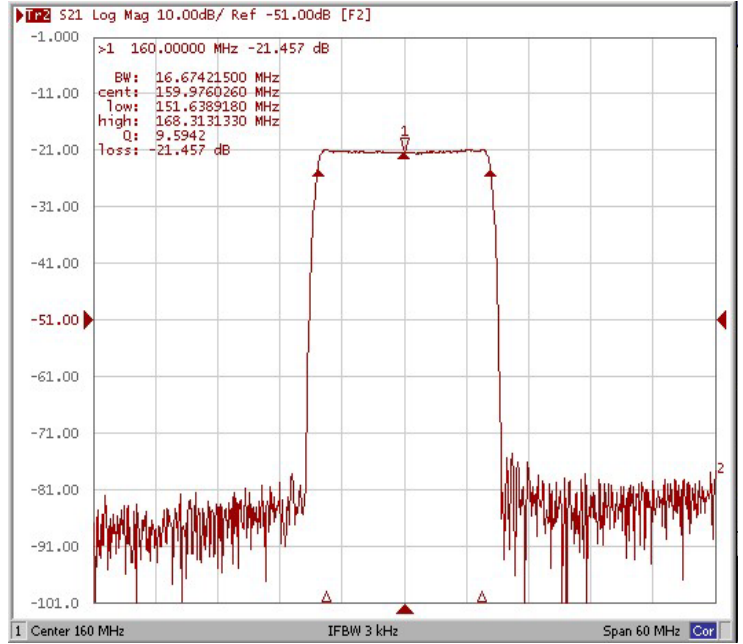


## Frequency Response

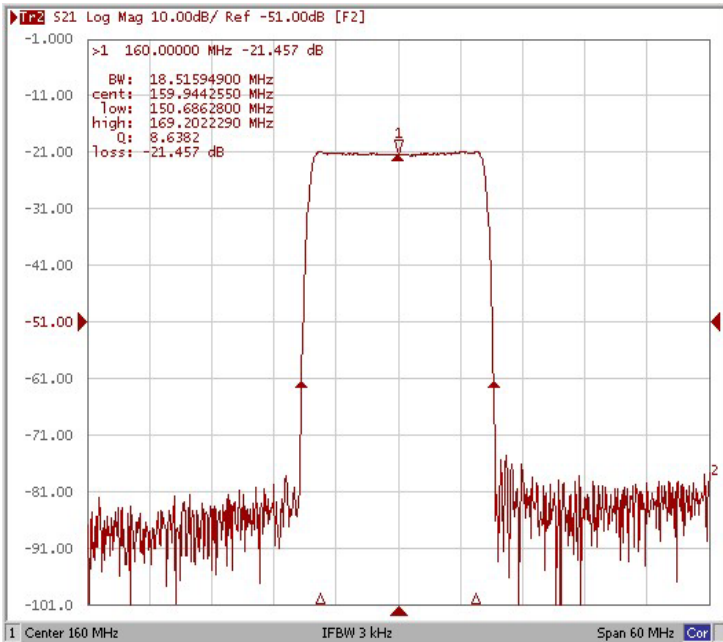
### Bandwidth at -1.0 dB



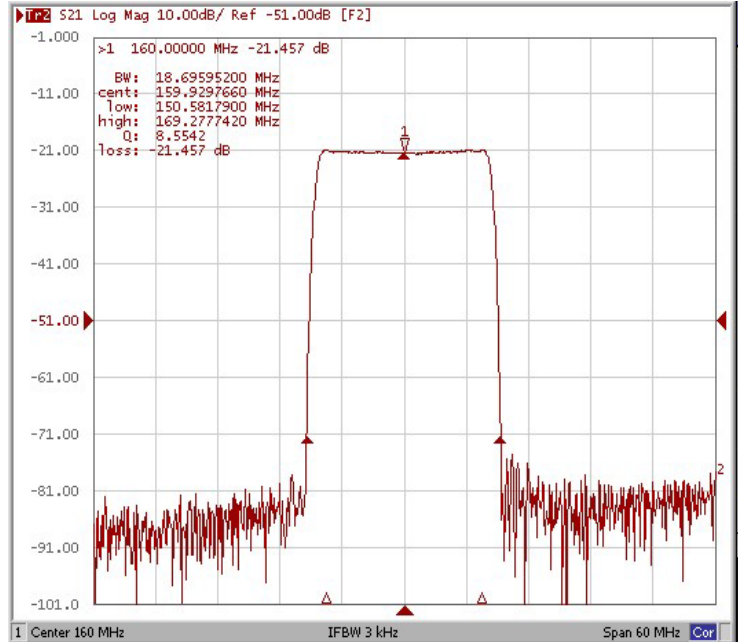
### Bandwidth at -3.0 dB



### Bandwidth at -40 dB

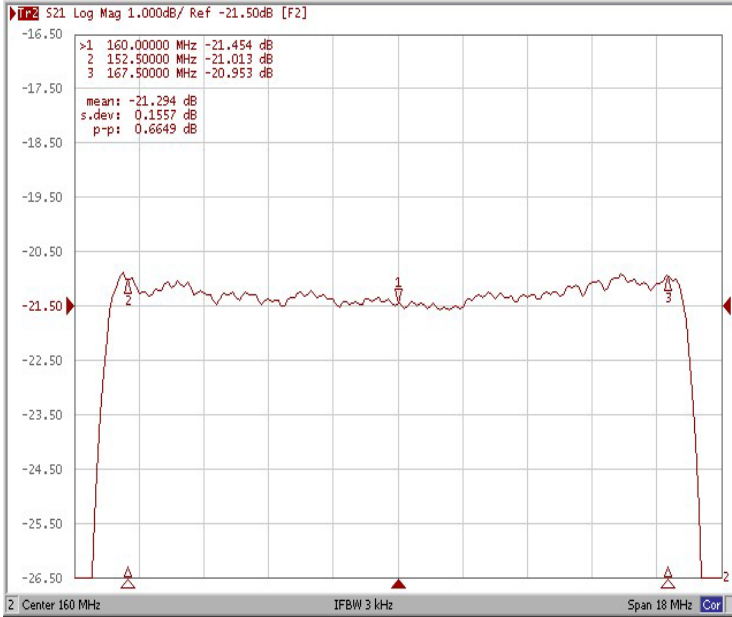


### Bandwidth at -50 dB

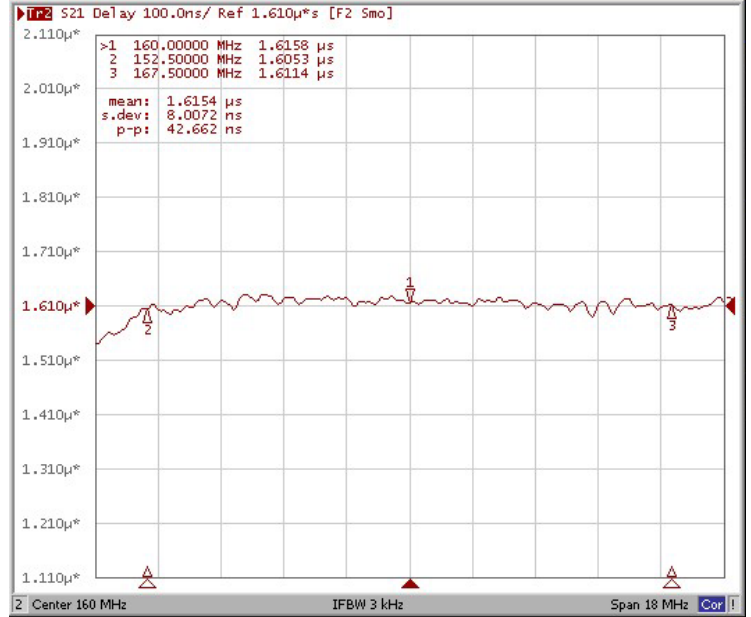




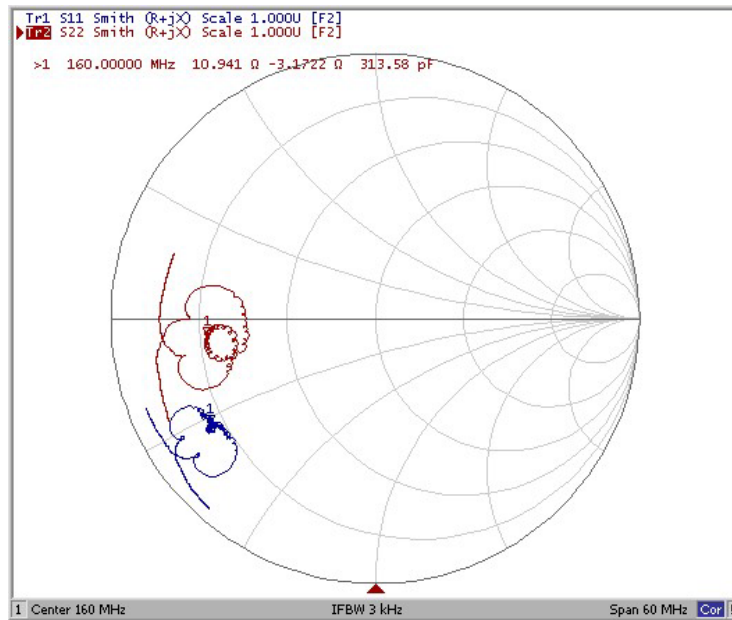
### Ripple Variation Fo±7.50 MHz



### Group Delay Variation Fo±7.50 MHz



### Smith Chart





### VSWR

