



REV A January 2011

Oscilent Controlled Document

Ordering Code / Part Number	Product Description
809-SL75.0M-15C	75.0 MHz IF SAW Filter 15.5 MHz Bandwidth

Specification Contents

- o Mechanical Dimensions
- o Test Circuit
- o Maximum Ratings
- o Electrical Specification
- o Frequency Response
- o Smith Chart
- o VSWR

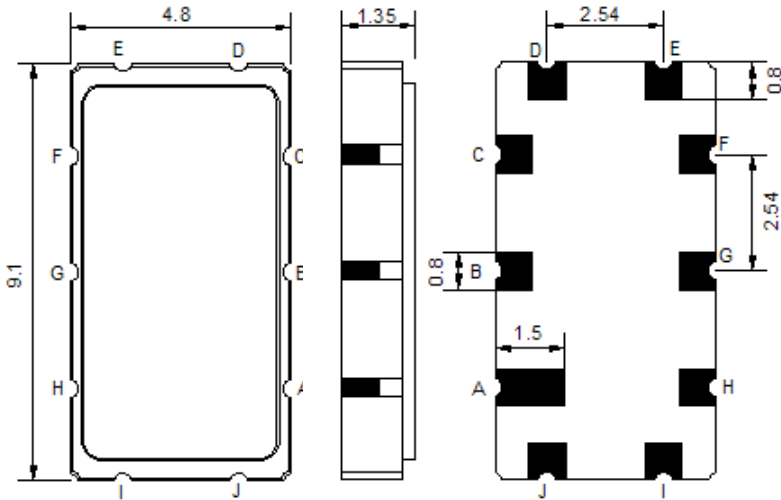
Notes

- o Electrostatic Sensitive Device (ESD) 
- o Avoid excessive ultrasonic exposure
- o Solderability compatible with JEDEC J-STD-020C Pb-free process, 260°C peak reflow temperature
- o This product complies with EU directive 2002/95/EC (RoHS compliance)



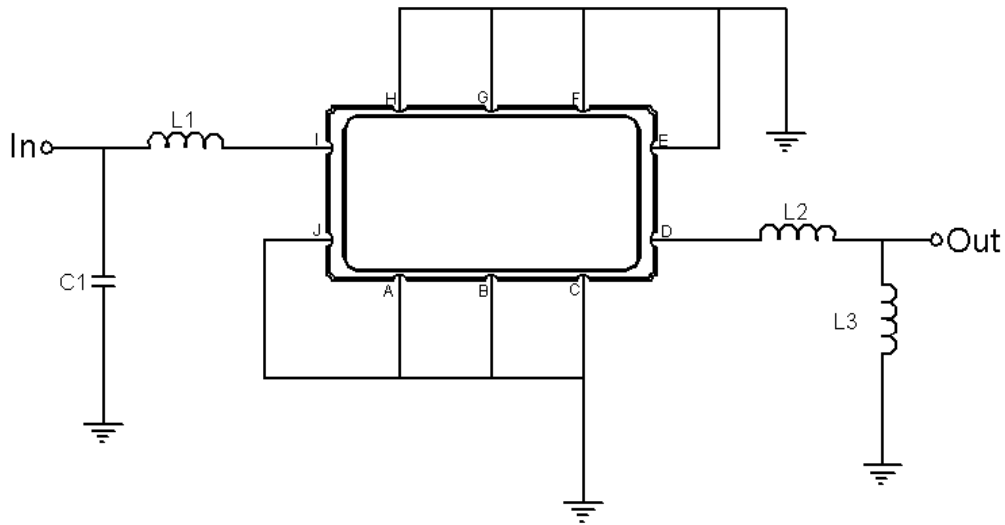


Mechanical Dimensions (mm)



Pin Description	
A, B, C, E, F, G, H, J	Ground
I	Input
D	Output

Test Circuit



Test Fixture & Values	
Input	L1 = 120 nH, C1 = 20 pF
Output	L2 = 18 nH, L3 = 100 nH
Source/Load Impedance	50 Ω



Maximum Ratings

Parameters Description	Unit	Minimum	Typical	Maximum
Operating Temperature Range	°C	-30	-	+80
Storage Temperature Range	°C	-40	-	+85
Maximum DC Voltage	V	-	-	10
Maximum Input Power	dBm	-	-	10
Source Impedance (single ended) ⁽¹⁾	Ω	-	50	-
Load Impedance (single ended) ⁽¹⁾	Ω	-	50	-

Notes: With Matching Network (Ref. Testing Environment Circuit as shown above).

Those impedances could be modified with different impedance values and/or structures, if necessary.

Electrical Specification

Parameters Description	Unit	Minimum	Typical	Maximum
Center Frequency (Fo)	MHz	-	75.0	-
Insertion Loss at Fo	dB	-	12.5	15.0
Group Delay Variation at Fo±6.875MHz	nsec	-	25	60
Absolute Delay Time at Fo	usec	-	0.9	-
Passband Ripple at Fo±6.875MHz	dB	-	0.33	0.8
Bandwidth at -1dB	MHz	13.75	15.5	-
Bandwidth at -3dB	MHz	-	16.35	-
Bandwidth at -40dB	MHz	-	20.0	21.0
Ultimate Rejection	dB	40	45	-
Temperature Coefficient	ppm/°	-	-86	-
VSWR	-	-	4	-



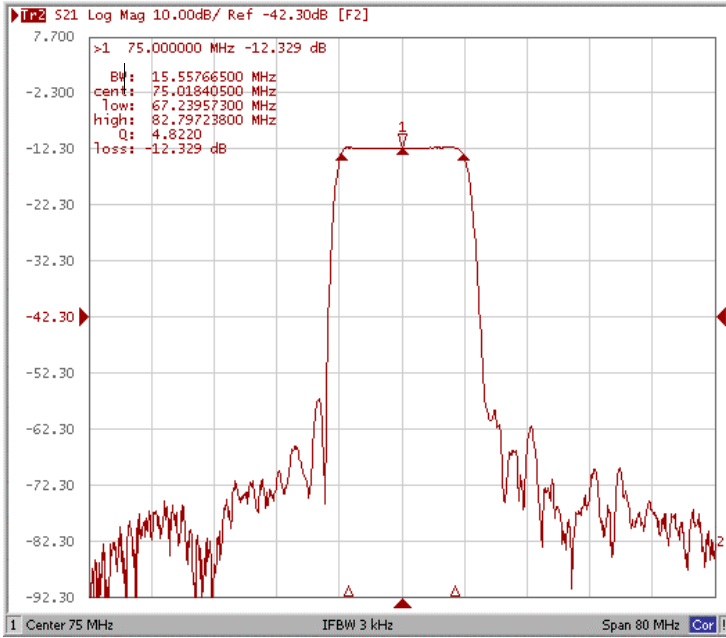
January 2011 Rev A

Oscilent Part Number 809-SL75.0M-15C

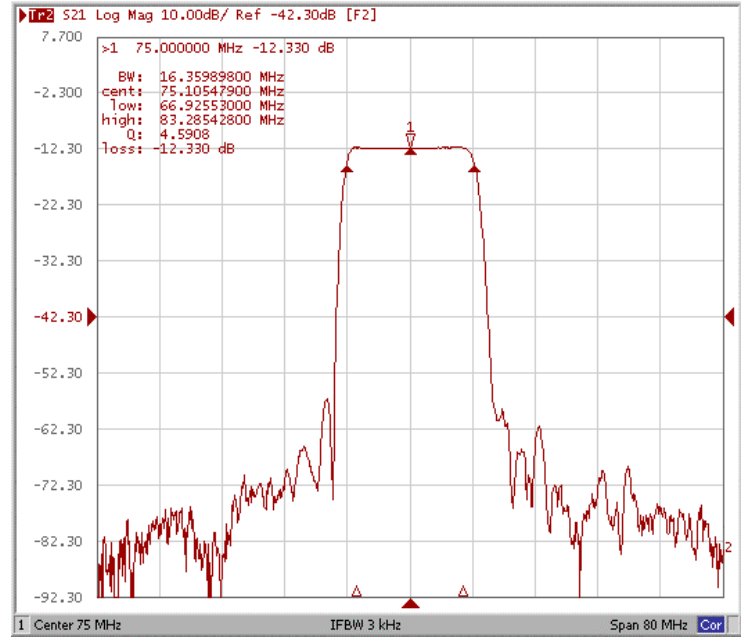
75.0 MHz IF SAW Filter 15.5 MHz Bandwidth

Frequency Response

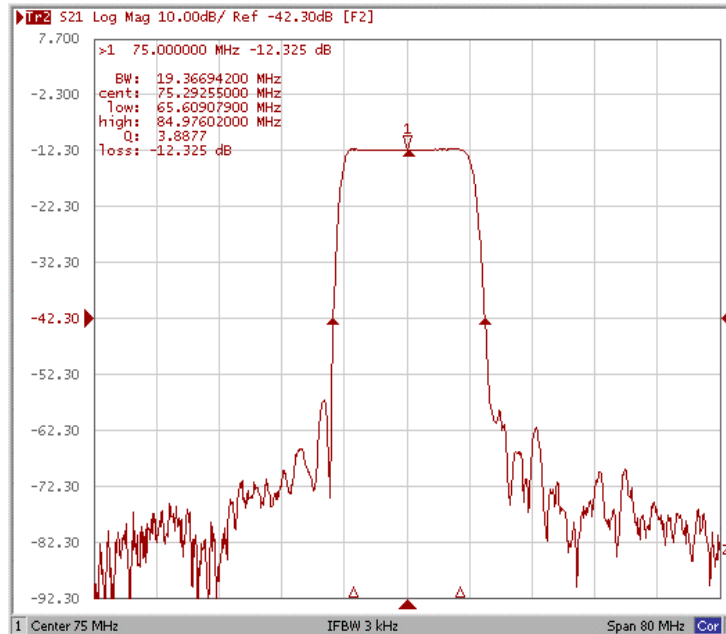
Bandwidth at -1.0 dB



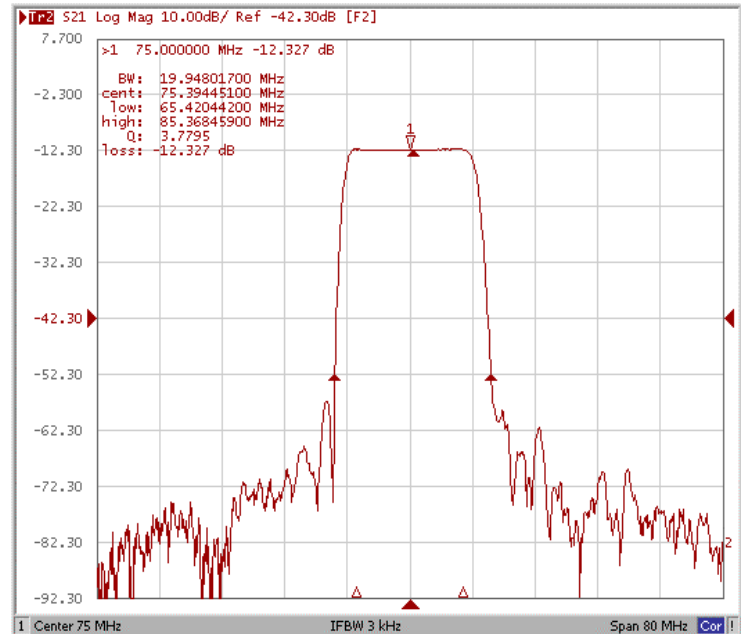
Bandwidth at -3.0 dB



Bandwidth at -30.0 dB

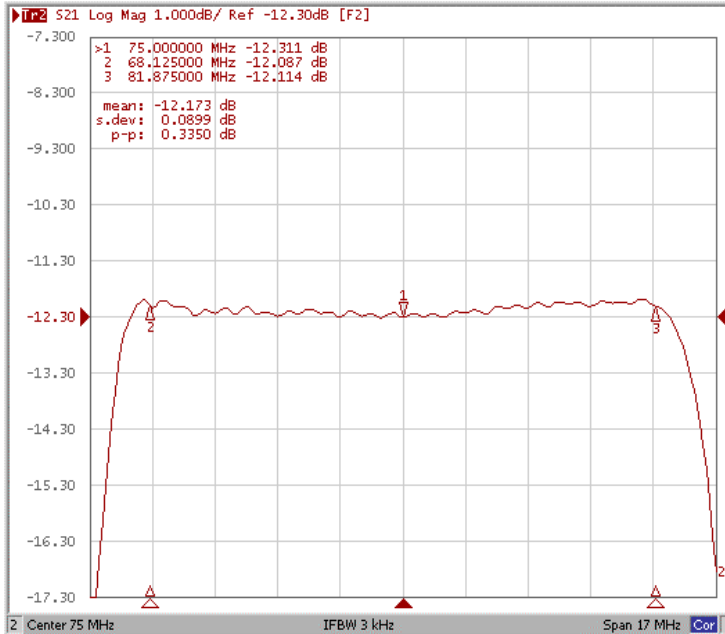


Bandwidth at -40.0 dB

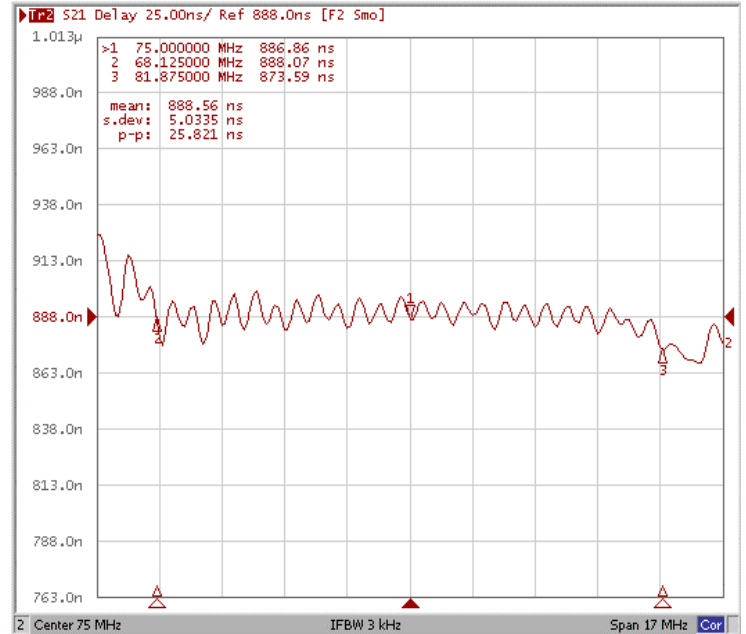




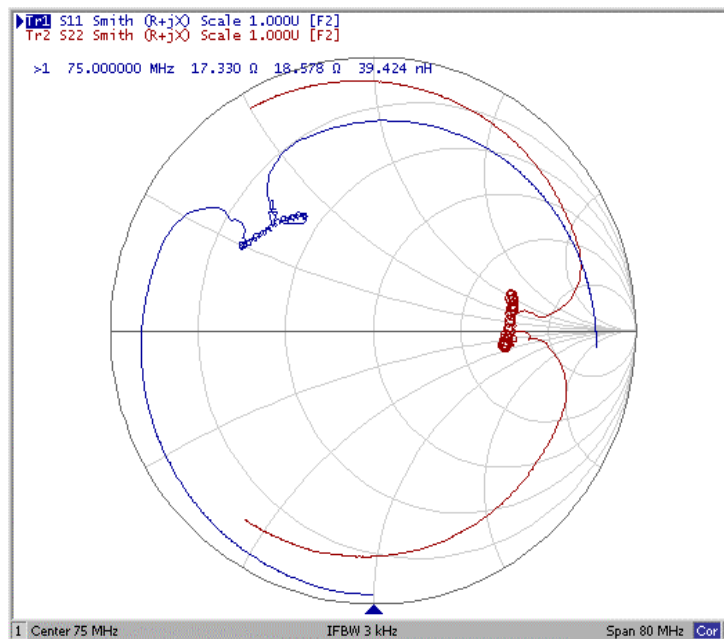
Ripple Variation Fo±6.875MHz



Group Delay Variation Fo±6.875MHz



Smith Chart





VSWR

