



Oscilent Corporation

PRODUCT SPECIFICATION

REV A January 2011

Oscilent Controlled Document

Ordering Code / Part Number	Product Description
809-SL75.0M-15B	75.0 MHz IF SAW Filter 16.2 MHz Bandwidth

Specification Contents

- o Mechanical Dimensions
- o Test Circuit
- o Maximum Ratings
- o Electrical Specification
- o Frequency Response

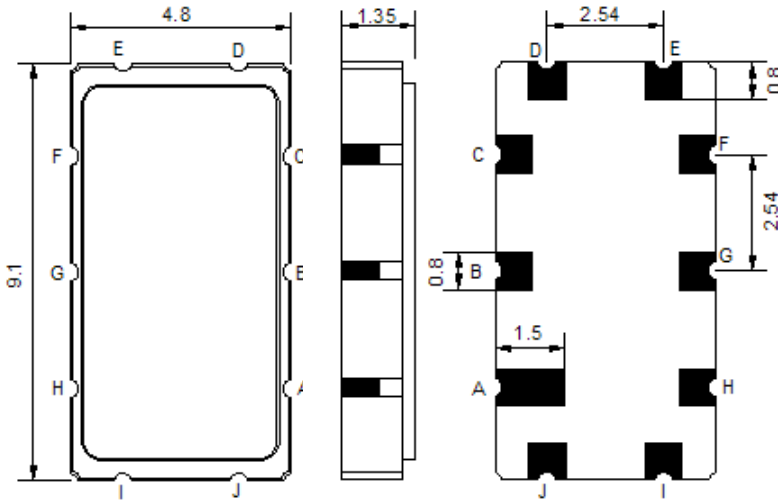
Notes

- o Electrostatic Sensitive Device (ESD) 
- o Avoid excessive ultrasonic exposure
- o Solderability compatible with JEDEC J-STD-020C Pb-free process, 260°C peak reflow temperature
- o This product complies with EU directive 2002/95/EC (RoHS compliance)



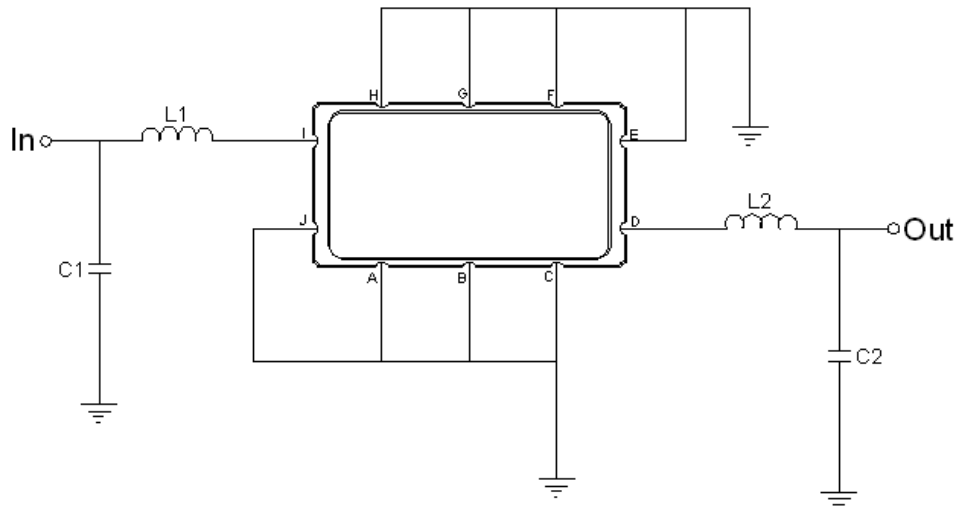


Mechanical Dimensions (mm)



Pin Description	
A, B, C, E, F, G, H, J	Ground
I	Input
D	Output

Test Circuit



Test Fixture & Values	
Input	L1=270 nH, Q>40, C1=7 pF
Output	L2=270 nH, Q>40, C2=7 pF
Source/Load Impedance	50 Ω



Maximum Ratings

Parameters Description	Unit	Minimum	Typical	Maximum
Operating Temperature Range	°C	-30	-	+80
Storage Temperature Range	°C	-40	-	+85
Maximum DC Voltage	V	-	-	10
Maximum Input Power	dBm	-	-	10
Source Impedance (single ended) ⁽¹⁾	Ω	-	50	-
Load Impedance (single ended) ⁽¹⁾	Ω	-	50	-

Notes: With Matching Network (Ref. Testing Environment Circuit as shown above).

Those impedances could be modified with different impedance values and/or structures, if necessary.

Electrical Specification

Parameters Description	Unit	Minimum	Typical	Maximum
Center Frequency (Fo)	MHz	-	75.0	-
Insertion Loss at Fo	dB	-	13.0	14.5
Amplitude Ripple Variation at Fo ±7.5 MHz	dB _{p-p}	-	0.55	1.0
Group Delay Variation at Fo ±7.5 MHz	nsec	-	45	60
Absolute Delay at Fo	μsec	-	0.88	-
Temperature Coefficient	ppm/°C	-	-84	-
Bandwidth at -1.0 dB	MHz	15.8	16.20	-
Bandwidth at -3.0 dB	MHz	-	16.95	-
Bandwidth at -40.0 dB	MHz	-	20.70	21.5
Relative Attenuation: (Ref 75MHz)				
Lower Sidelobe	dB	40	45	-
Upper Sidelobe	dB	37	45	-
IN/OUT Return Loss at Fo	dB	-	-	-



Frequency Response

