



PRODUCT SPECIFICATION

REV A January 2011

Oscilent Controlled Document

Ordering Code / Part Number	Product Description
809-SL75.0M-05B	75.0MHz IF SAW Filter 5.59MHz Bandwidth

Specification Contents

- o Mechanical Dimensions
- o Test Circuit
- o Maximum Ratings
- o Electrical Specification
- o Frequency Response
- o Smith Chart
- o VSWR

Notes

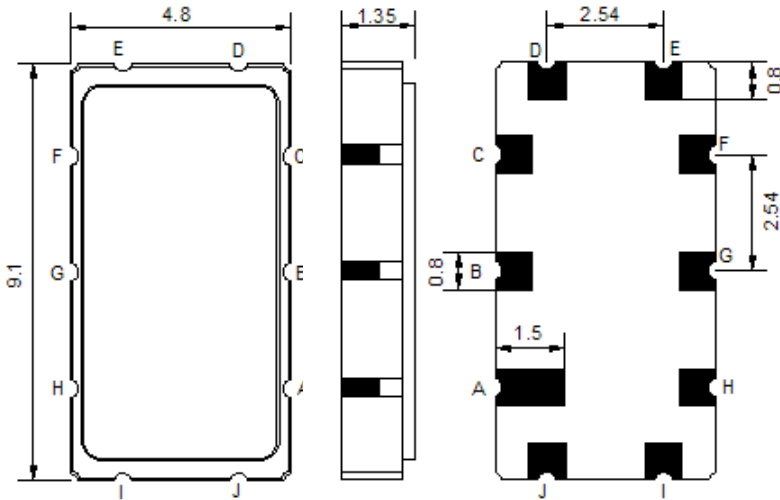
- o Electrostatic Sensitive Device (ESD) 
- o Avoid excessive ultrasonic exposure
- o Solderability compatible with JEDEC J-STD-020C Pb-free process, 260°C peak reflow temperature
- o This product complies with EU directive 2002/95/EC (RoHS compliance)



Oscilent Corporation
Telephone: 1.949.252.0522
Fax: 1.949.252.0522
Email: sales@oscilent.com

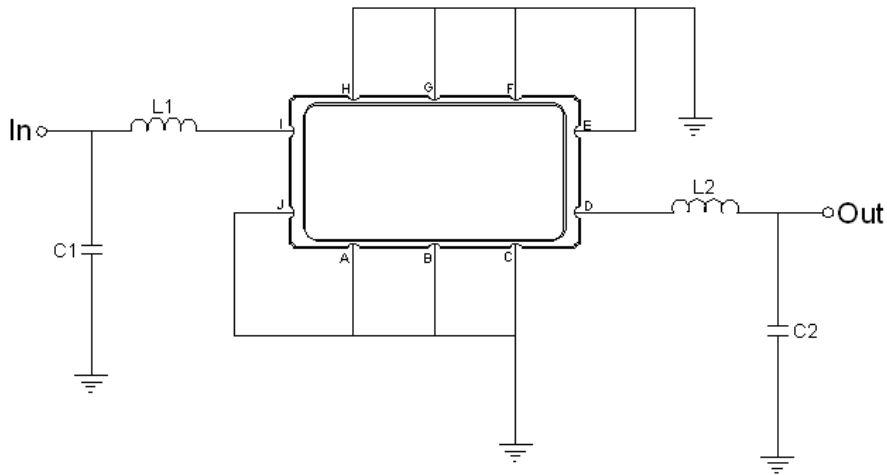


Mechanical Dimensions (mm)



Pin Description	
A, B, C, E, F, G, H, J	Ground
I	Input
D	Output

Test Circuit



Test Fixture & Values	
Input	L1 = 100 nH, C1 = 7 pF
Output	L2 = 100 nH, C2 = 7 pF
Source/Load Impedance	50 Ω

**Maximum Ratings**

Parameters Description	Unit	Minimum	Typical	Maximum
Operating Temperature Range	°C	-30	-	+80
Storage Temperature Range	°C	-40	-	+85
Maximum DC Voltage	V	-	-	10
Maximum Input Power	dBm	-	-	10
Source Impedance (single ended) ⁽¹⁾	Ω	-	50	-
Load Impedance (single ended) ⁽¹⁾	Ω	-	50	-

Notes: With Matching Network (Ref. Testing Environment Circuit as shown above).

Those impedances could be modified with different impedance values and/or structures, if necessary.

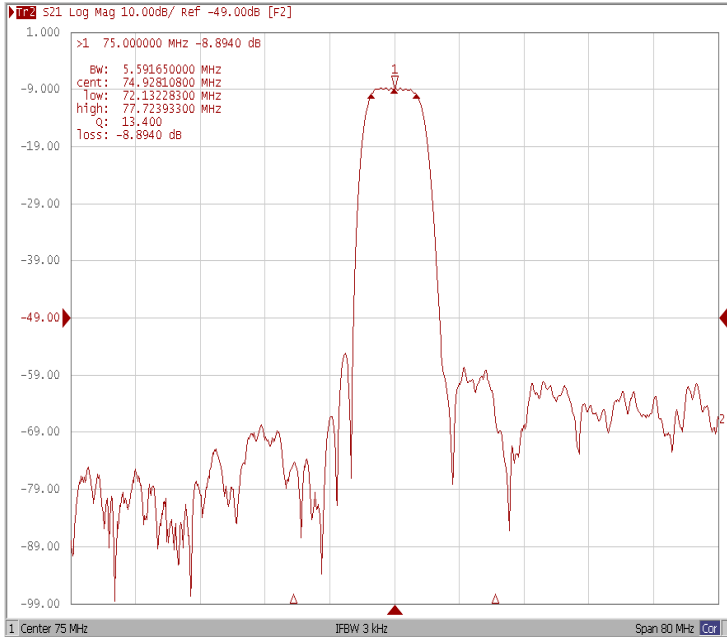
Electrical Specification

Parameters Description	Unit	Minimum	Typical	Maximum
Center Frequency (Fo)	MHz	-	75.0	-
Insertion Loss at Fo	dB	-	8.9	12.00
Temperature Coefficient	ppm/°C	-	-86	-
Amplitude Ripple Variation (Fo+/-1.94MHz)	dB _{p-p}	-	0.4	0.9
Group Delay Variation (Fo+/-1.94MHz)	nsec	-	56	100
Absolute Delay at Fo	µsec	-	0.8	-
Bandwidth at -1.0 dB	MHz	-	5.6	-
Bandwidth at -3.0 dB	MHz	-	6.6	-
Bandwidth at -30.0 dB	MHz	-	9.92	-
VSWR	-	-	3.8	-

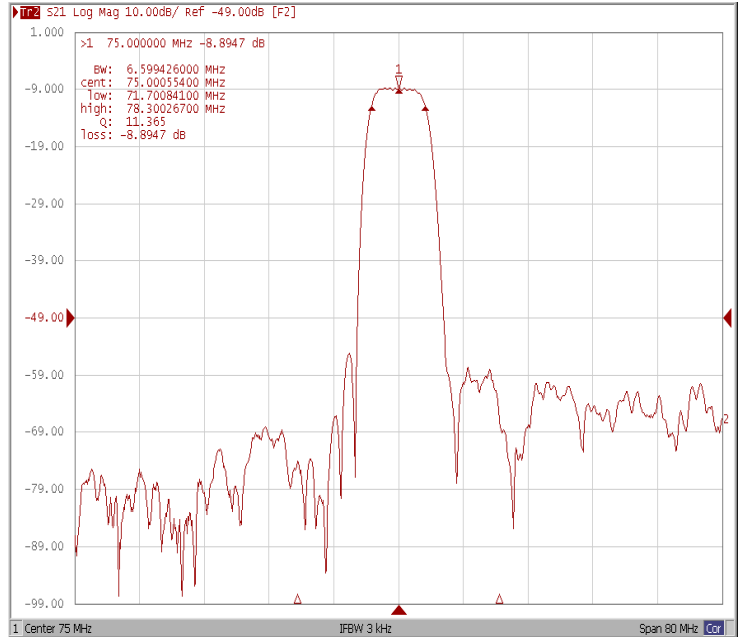


Frequency Response

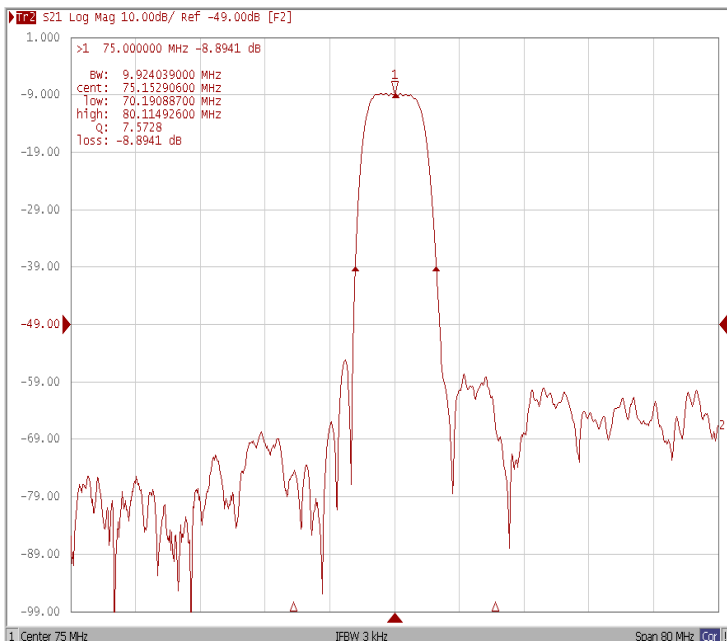
Bandwidth at -1.0 dB



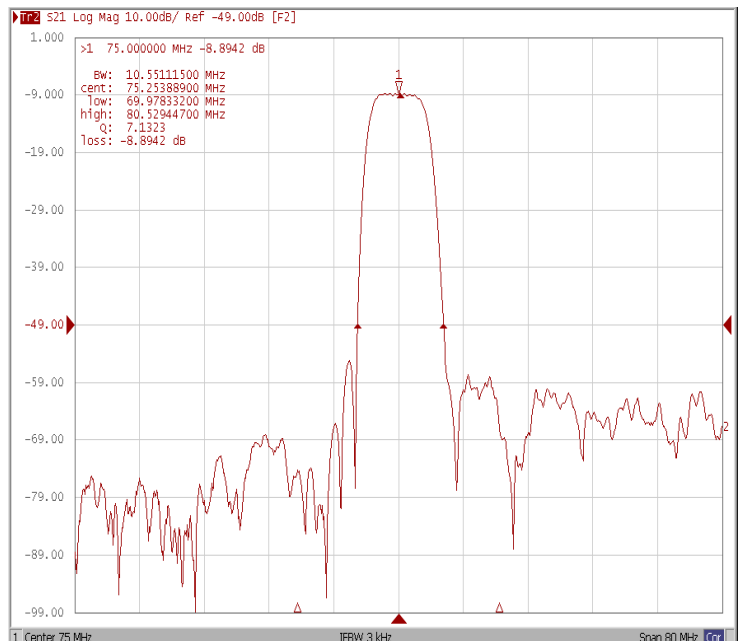
Bandwidth at -3.0 dB



Bandwidth at -30 dB

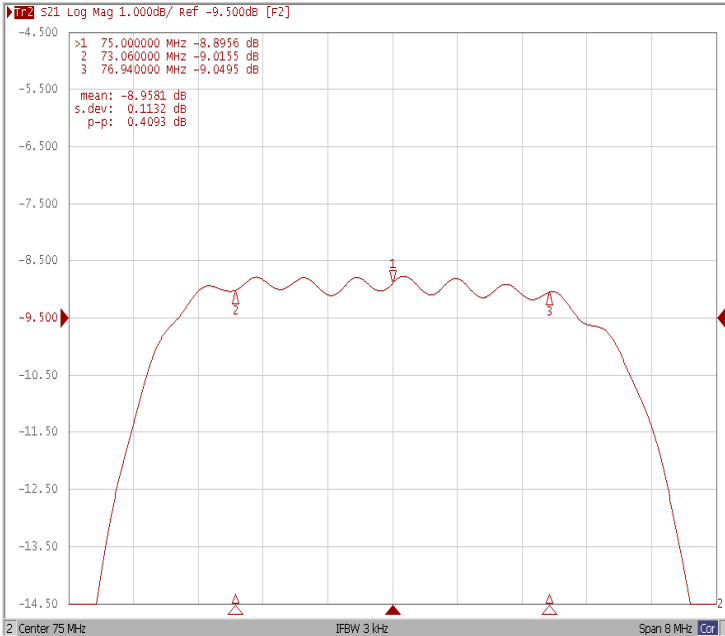


Bandwidth at -40 dB

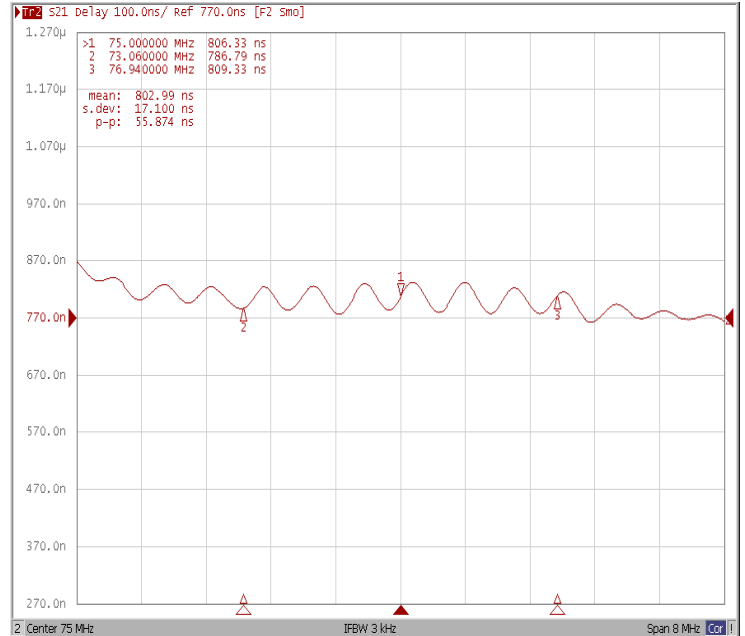




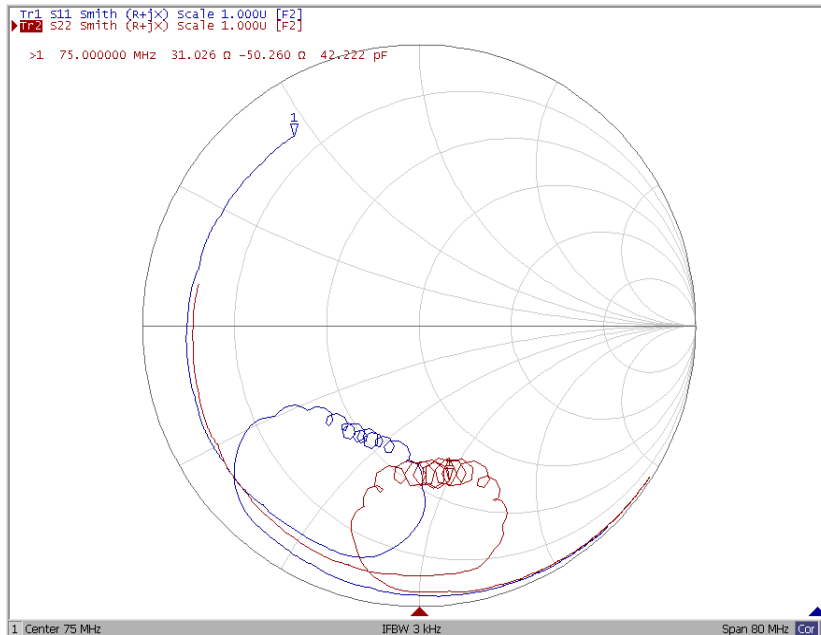
Ripple Variation (Fo±1.94MHz)



Group Delay Variation (Fo±1.94MHz)



Smith Chart





VSWR

