



PRODUCT SPECIFICATION

REV A January 2011

Oscilent Controlled Document

Ordering Code / Part Number	Product Description
809-SL62.5M-19C	62.5 MHz IF SAW Filter 19.62 MHz Bandwidth

Specification Contents

- o Mechanical Dimensions
- o Test Circuit
- o Maximum Ratings
- o Electrical Specification
- o Frequency Response
- o Smith Chart
- o VSWR

Notes

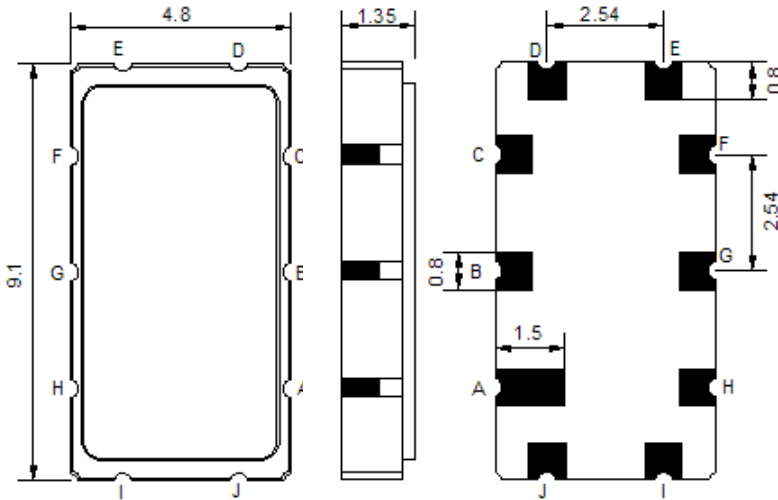
- o Electrostatic Sensitive Device (ESD) 
- o Avoid excessive ultrasonic exposure
- o Solderability compatible with JEDEC J-STD-020C Pb-free process, 260°C peak reflow temperature
- o This product complies with EU directive 2002/95/EC (RoHS compliance)



Oscilent Corporation
Telephone: 1.949.252.0522
Fax: 1.949.252.0522
Email: sales@oscilent.com

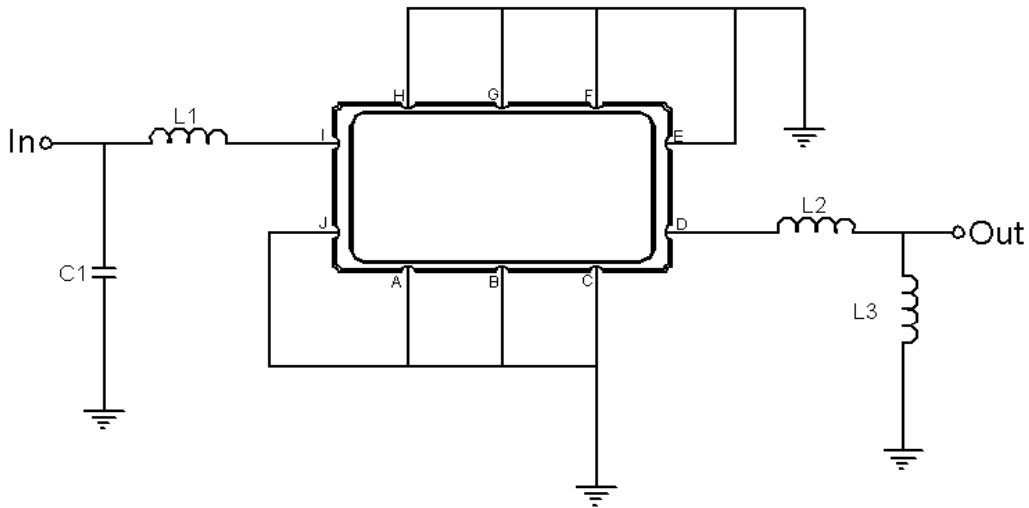


Mechanical Dimensions (mm)



Pin Description	
A, B, C, E, F, G, H, J	Ground
I	Input
D	Output

Test Circuit



Test Fixture & Values	
Input	L1 = 180 nH, C1 = 33 pF
Output	L2 = 39 nH, C2 = 68 pF
Source/Load Impedance	50 Ω

**Maximum Ratings**

Parameters Description	Unit	Minimum	Typical	Maximum
Operating Temperature Range	°C	-30	-	60
Storage Temperature Range	°C	-40	-	85
Maximum DC Voltage	V	-	-	10
Maximum Input Power	dBm	-	-	10
Source Impedance (single ended) ⁽¹⁾	Ω	-	50	-
Load Impedance (single ended) ⁽¹⁾	Ω	-	50	-

Notes: With Matching Network (Ref. Testing Environment Circuit as shown above).

Those impedances could be modified with different impedance values and/or structures, if necessary.

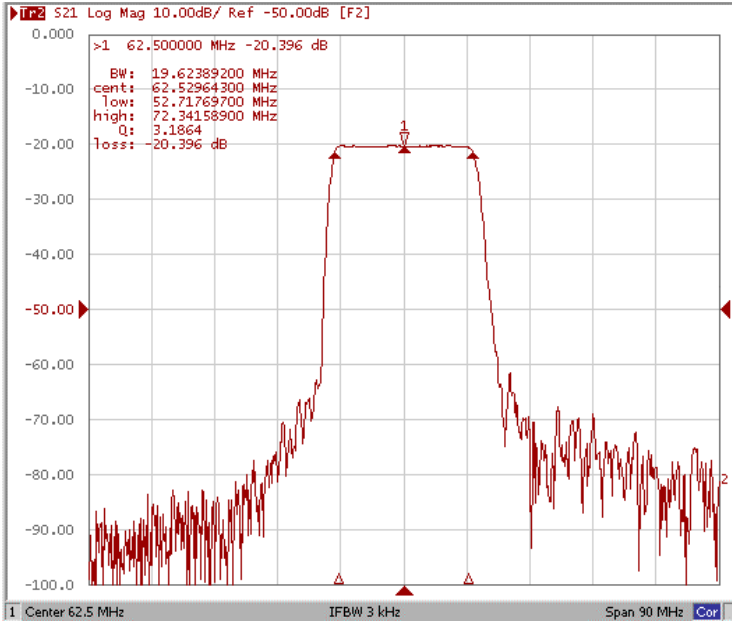
Electrical Specification

Parameters Description	Unit	Minimum	Typical	Maximum
Center Frequency (Fo)	MHz	-	62.5	-
Insertion Loss at Fo	dB	-	20.50	22.0
Group Delay Variation at Fo±9.22MHz	nsec	-	30	80
Absolute Delay at Fo	usec	-	1.01	-
Passband Ripple at Fo±9.22MHz	dB	-	0.50	1.0
Bandwidth at -1dB	MHz	19.50	19.62	-
Bandwidth at -3dB	MHz	-	20.44	-
Bandwidth at -5dB	MHz	-	20.94	-
Bandwidth at -40dB	MHz	-	25.20	25.80
Relative Attenuation:				
Lower sidelobe	dB	40	45	-
Upper sidelobe	dB	40	45	-

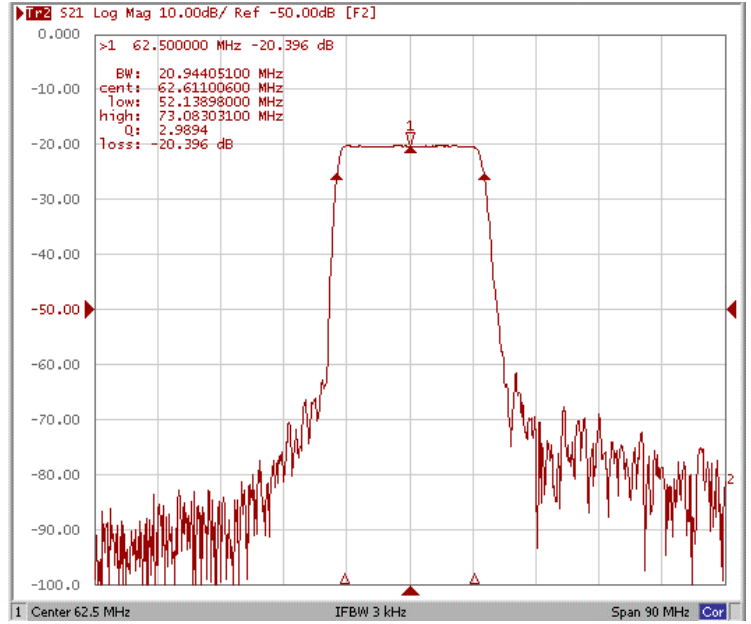


Frequency Response

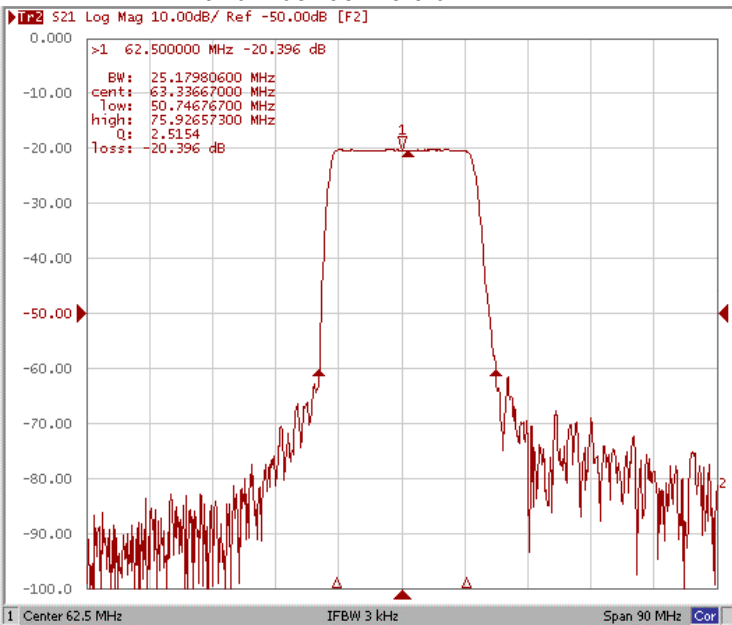
Bandwidth at -1.0 dB



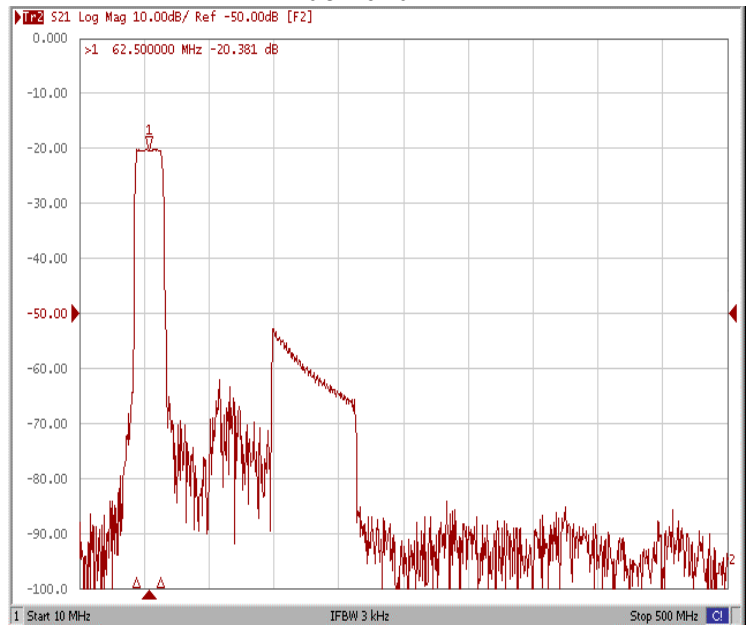
Bandwidth at -5.0 dB



Bandwidth at -40.0 dB

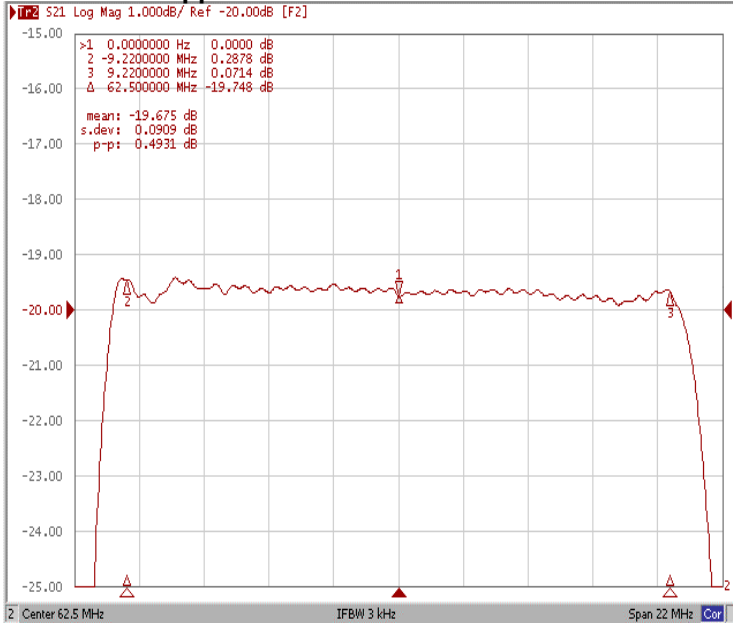


Wide-Band

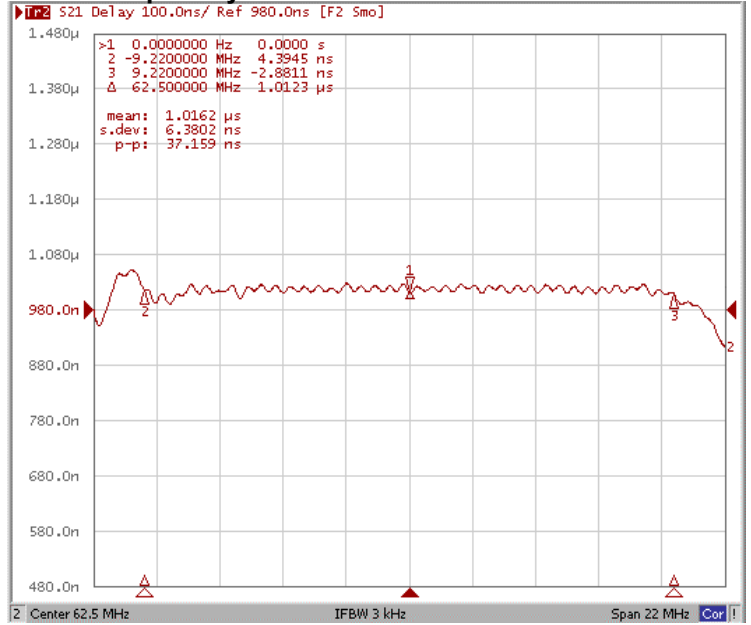




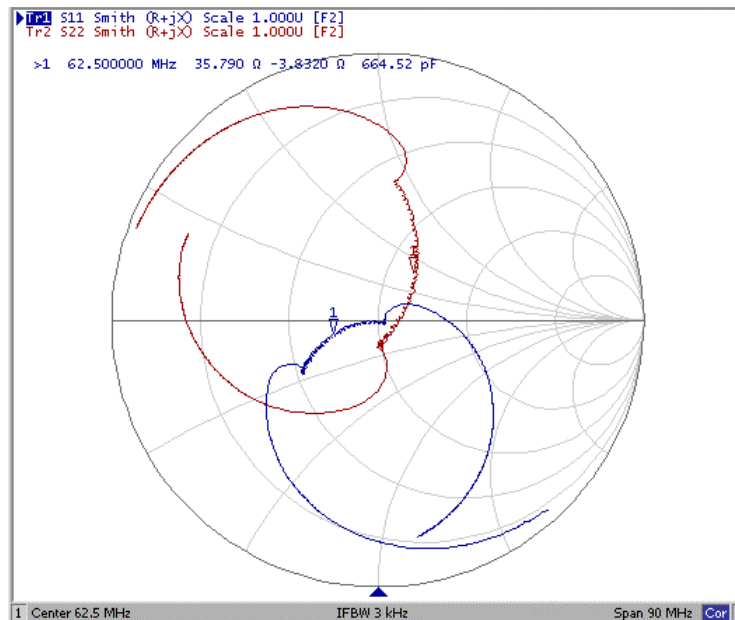
Ripple Variation at Fo ±9.22MHz



Group Delay Variation at Fo ±9.22MHz



Smith Chart





VSWR

