



REV A January 2011

Oscilent Controlled Document

Ordering Code / Part Number	Product Description
835-IF115.0M-B	115.0 MHz IF SAW Filter 26.1 MHz Bandwidth

### Specification Contents

- o Mechanical Dimensions
- o Test Circuit
- o Maximum Ratings
- o Electrical Specification

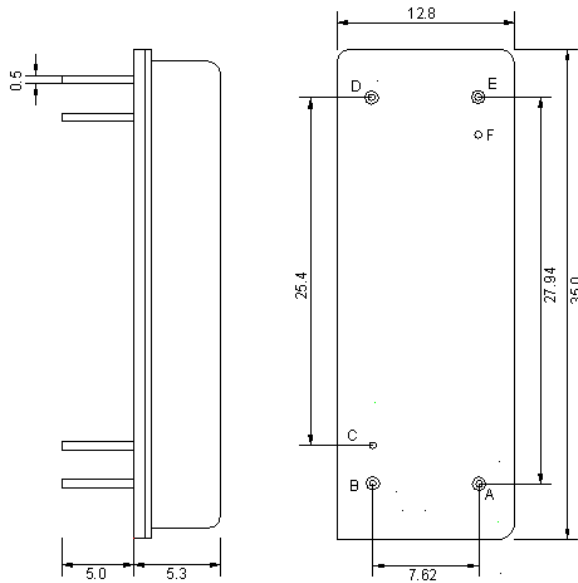
### Notes

- o Electrostatic Sensitive Device (ESD) 
- o Avoid excessive ultrasonic exposure
- o Solderability compatible with JEDEC J-STD-020C Pb-free process, 260°C peak reflow temperature
- o This product complies with EU directive 2002/95/EC (RoHS compliance)



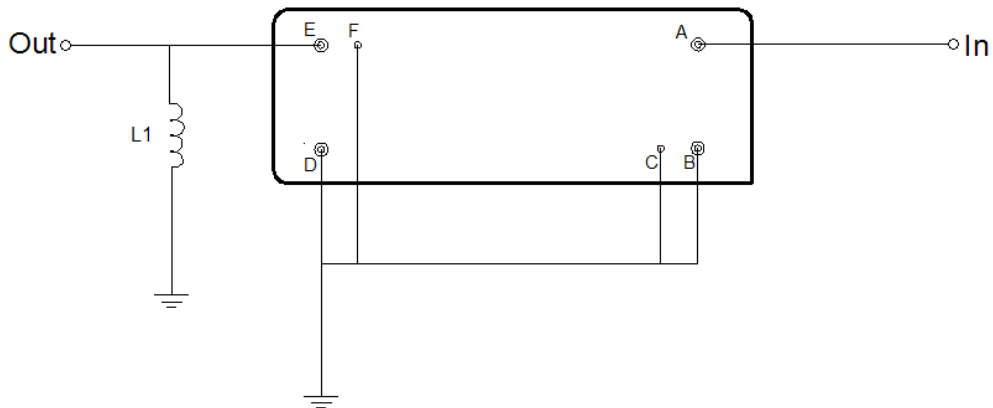


**Mechanical Dimensions (mm)**



Pin Description	
B, C, D, F	Ground
A	In
E	Out

**Test Circuit**



Test Fixture & Values	
Output	L1 = 39 nH
Source/Load Impedance	50 Ω



## Maximum Ratings

Parameters Description	Unit	Minimum	Typical	Maximum
Operating Temperature Range	°C	-30	-	80
Storage Temperature Range	°C	-40	-	85
Maximum DC Voltage	V	-	-	10
Maximum Input Power	dBm	-	-	10
Source Impedance (single ended) <sup>(1)</sup>	Ω	-	50	-
Load Impedance (single ended) <sup>(1)</sup>	Ω	-	50	-

Notes: With Matching Network (Ref. Testing Environment Circuit as shown above).  
Those impedances could be modified with different impedance values and/or structures, if necessary.

## Electrical Specification

Parameters Description	Unit	Minimum	Typical	Maximum
Center Frequency (Fo)	MHz	114.91	115.00	115.09
Insertion Loss at Fo	dB	-	23.1	25.0
Group Delay Variation	nsec	-	35	80
Absolute Delay at Fo	usec	-	1.573	-
Passband Ripple Variation	dB <sub>p-p</sub>	-	0.7	1.0
Bandwidth at -1dB	MHz	25.5	25.60	-
Bandwidth at -3dB	MHz	26.1	26.25	-
Bandwidth at -40dB	MHz	-	28.60	28.80
Ultimate Rejection	dB	50	55	-
Substrate Material	-	-	LN	-