



**Data Sheet**



Product Category: IF SAW Filter

Part Number  
820-IF72.5M-A

Package  
20.2 x 12.6 Thru Hole

Application  
Base Station & Repeater

Last Modified  
May 30 2003

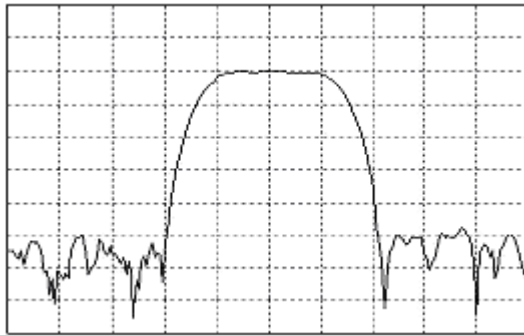
**TYPE :**

72.5 MHz Bandpass Filter

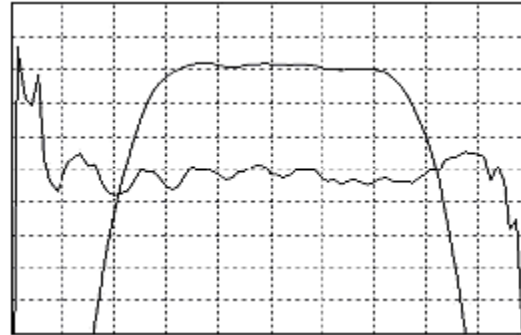
1.1 MHz Bandwidth

**PART NUMBER :**

**820-IF72.5M-A**



Horizontal : 0.5 MHz/Div  
Vertical : 10 dB/Div



Horizontal : 0.2 MHz/Div  
Vertical : 1 dB/Div  
Vertical : 100 ns/Div

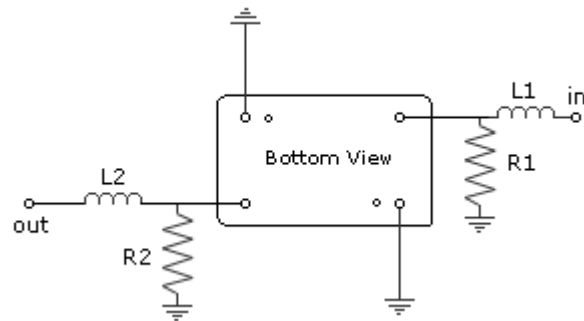
**OPERATING CONDITIONS / ELECTRICAL CHARACTERISTICS**

PARAMETERS	Minimum	Typical	Maximum	Units
<b>Center Frequency</b>	72.44	72.5	72.56	MHz
<b>Insertion Loss</b>	-	23.0	28.0	dB
<b>1dB Bandwidth</b>	0.91	1.0	-	MHz
<b>3dB Bandwidth</b>	1.1	1.2	-	MHz
<b>40dB Bandwidth</b>	-	1.95	2.0	MHz
<b>Passband Ripple</b>	-	0.4	0.8	dB
<b>Group Delay Variation</b>	-	100	150	nsec
<b>Absolute Delay</b>	-	2.6	-	µsec
<b>Ultimate Rejection</b>	40	50	-	dB
<b>Substrate Material</b>	-	Quartz	-	-
<b>Ambient Temperature</b>	-	25	-	°C

\* Custom SAW IF Filters available. Contact Oscilent for assistance.

**PACKAGE OUTLINE (mm)**

**TEST FIXTURE**



L1 = 220nH  
 L2 = 180nH  
 R1 = 1.0 kohm  
 R2 = 1.0 kohm  
 Source/Load Impedance = 50 ohms

**Part No.:** 820-IF72.5M-A

**Oscilent Corporation** - CALL **949.252.0522**

17962 Sky Park Circle, Building D, Irvine, CA 92614, USA  
 Fax: 949.252.0599, E-Mail: Sales@Oscilent.com