



Data Sheet



Product Category: IF SAW Filter

Part Number
820-IF70.0M-F

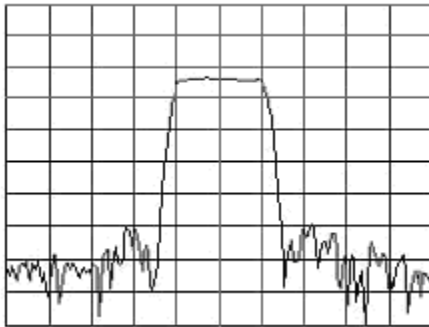
Package
20.2 x 12.6 Thru Hole

Application
Base Station & Repeater

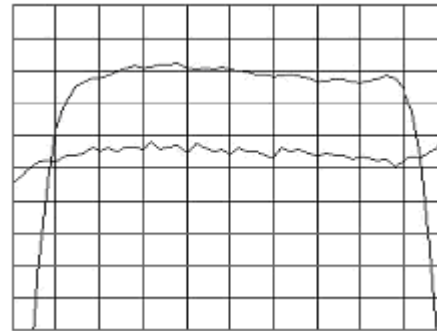
Last Modified
May 02 2003

TYPE :
70.0 MHz Bandpass Filter
4.0 MHz Bandwidth

PART NUMBER :
820-IF70.0M-F



Horizontal : 2.0 MHz/Div
Vertical : 10 dB/Div



Horizontal : 0.5 MHz/Div
Vertical : 1 dB/Div
Vertical : 100 ns/Div

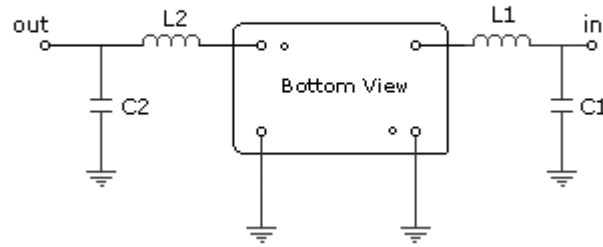
OPERATING CONDITIONS / ELECTRICAL CHARACTERISTICS

PARAMETERS	Minimum	Typical	Maximum	Units
Center Frequency	69.92	70.00	70.08	MHz
Insertion Loss	-	22.5	25.0	dB
1dB Bandwidth	3.8	4.0	-	MHz
3dB Bandwidth	4.1	4.3	-	MHz
40dB Bandwidth	-	5.6	5.9	MHz
Passband Ripple	-	0.5	0.8	dB
Group Delay Variation	-	80	100	nsec
Absolute Delay	-	2.06	-	µsec
Ultimate Rejection	45	55	-	dB
Substrate Material	-	112 LT	-	-
Ambient Temperature	-	25	-	°C

* Custom SAW IF Filters available. Contact Oscilent for assistance.

PACKAGE OUTLINE (mm)

TEST FIXTURE



L1 = 86nH C1 = 75pF
 L2 = 82nH C2 = 75pF
 Source/Load Impedance = 50 ohms

Part No.: 820-IF70.0M-F

Oscilent Corporation - CALL **949.252.0522**

17962 Sky Park Circle, Building D, Irvine, CA 92614, USA
 Fax: 949.252.0599, E-Mail: Sales@Oscilent.com