



Data Sheet

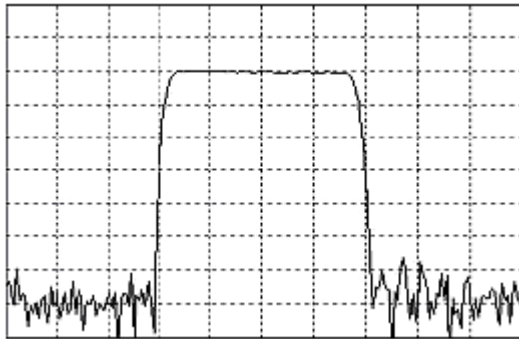


Product Category: IF SAW Filter

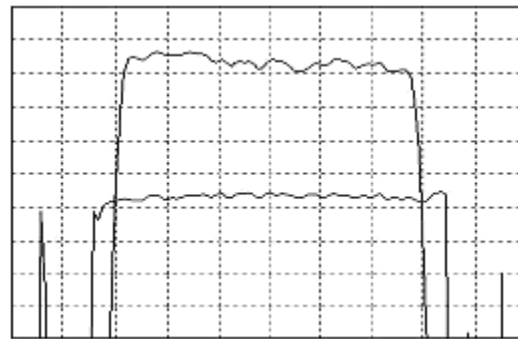
Part Number: 820-IF140.0M-F Package: 20.2 x 12.6 Thru Hole Application: Base Station & Repeater Last Modified: May 30 2003

TYPE :
140.0 MHz Bandpass Filter
34.0 MHz Bandwidth

PART NUMBER :
820-IF140.0M-F



Horizontal : 10.0 MHz/Div
Vertical : 10 dB/Div



Horizontal : 6.0 MHz/Div
Vertical : 1 dB/Div
Vertical : 50 ns/Div

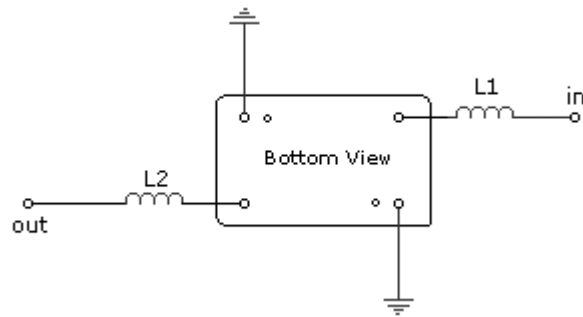
OPERATING CONDITIONS / ELECTRICAL CHARACTERISTICS

PARAMETERS	Minimum	Typical	Maximum	Units
Center Frequency	139.75	140.0	140.25	MHz
Insertion Loss	-	22.2	24.0	dB
1dB Bandwidth	33.0	34.0	-	MHz
3dB Bandwidth	34.0	35.4	-	MHz
40dB Bandwidth	-	40.4	42.0	MHz
Passband Ripple	-	0.65	1.0	dB
Group Delay Variation	-	20	50	nsec
Absolute Delay	-	0.96	-	µsec
Ultimate Rejection	50	60	-	dB
Substrate Material	-	LN	-	-
Ambient Temperature	-	25	-	°C
Phase Linearity	-	7.5	10.0	degc

* Custom SAW IF Filters available. Contact Oscilent for assistance.

PACKAGE OUTLINE (mm)

TEST FIXTURE



L1 = 68nH

L2 = 82nH

Source/Load Impedance = 50 ohms

Oscilent Corporation - CALL **949.252.0522**

17962 Sky Park Circle, Building D, Irvine, CA 92614, USA
 Fax: 949.252.0599, E-Mail: Sales@Oscilent.com

Part No.: 820-IF140.0M-F