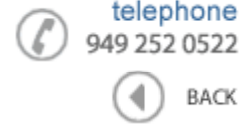




Data Sheet

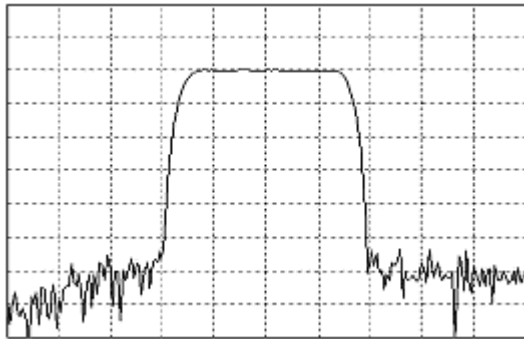


Product Category: IF SAW Filter

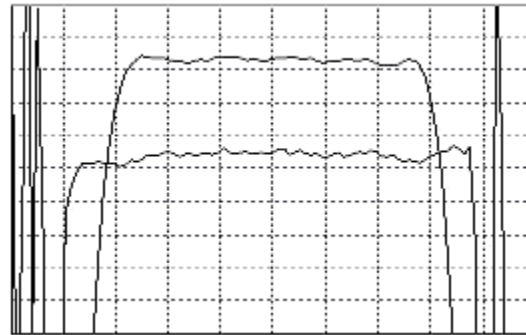
Part Number: 820-IF140.0M-D Package: 20.2 x 12.6 Thru Hole Application: Base Station & Repeater Last Modified: May 30 2003

TYPE :
140.0 MHz Bandpass Filter
7.3 MHz Bandwidth

PART NUMBER :
820-IF140.0M-D



Horizontal : 2.5 MHz/Div
Vertical : 10 dB/Div



Horizontal : 1.2 MHz/Div
Vertical : 1 dB/Div
Vertical : 100 ns/Div

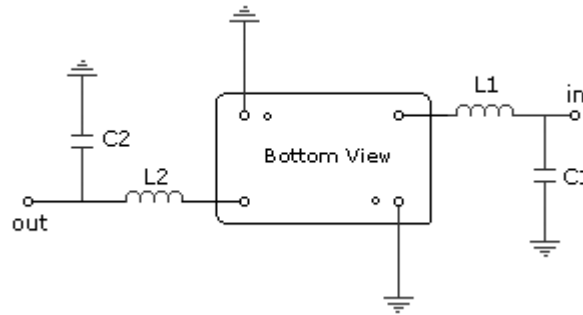
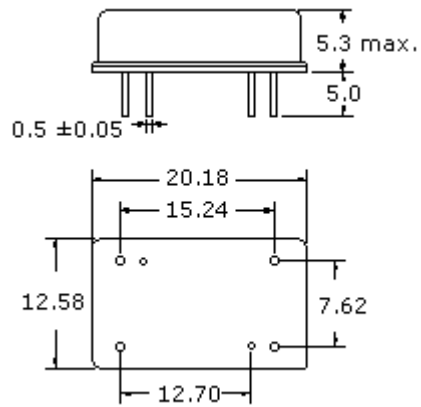
OPERATING CONDITIONS / ELECTRICAL CHARACTERISTICS

PARAMETERS	Minimum	Typical	Maximum	Units
Center Frequency	139.9	140.0	140.1	MHz
Insertion Loss	-	22.5	25.0	dB
1dB Bandwidth	6.8	7.1	-	MHz
3dB Bandwidth	7.3	7.6	-	MHz
40dB Bandwidth	-	9.5	10.0	MHz
Passband Ripple	-	0.4	0.8	dB
Group Delay Variation	-	50	70	nsec
Absolute Delay	-	2.84	-	µsec
Ultimate Rejection	50	55	-	dB
Substrate Material	-	112LT	-	-
Ambient Temperature	-	25	-	°C
Phase Linearity	-	3.8	7.0	degc

* Custom SAW IF Filters available. Contact Oscilent for assistance.

PACKAGE OUTLINE (mm)

TEST FIXTURE



L1 = 39nH C1 = 43pF
 L2 = 39nH C2 = 43pF
 Source/Load Impedance = 50 ohms

Oscilent Corporation - CALL **949.252.0522**

17962 Sky Park Circle, Building D, Irvine, CA 92614, USA
 Fax: 949.252.0599, E-Mail: Sales@Oscilent.com

Part No.: 820-IF140.0M-D