



Data Sheet



Product Category: IF SAW Filter

Part Number
820-IF140.0M-A

Package
20.2 x 12.6 Thru Hole

Application
Base Station & Repeater

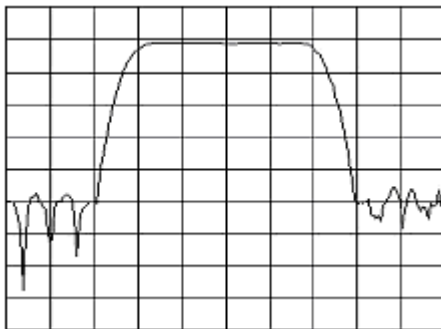
Last Modified
May 30 2003

TYPE :

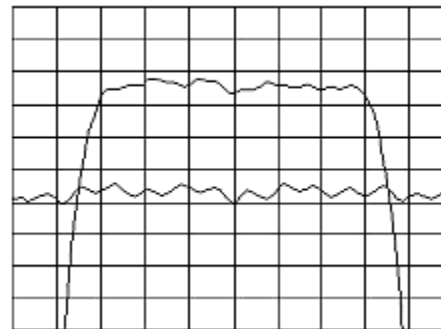
140.0 MHz Bandpass Filter
4.1 MHz Bandwidth

PART NUMBER :

820-IF140.0M-A



Horizontal : 1.0 MHz/Div
Vertical : 10 dB/Div



Horizontal : 0.6 MHz/Div
Vertical : 1 dB/Div
Vertical : 100 ns/Div

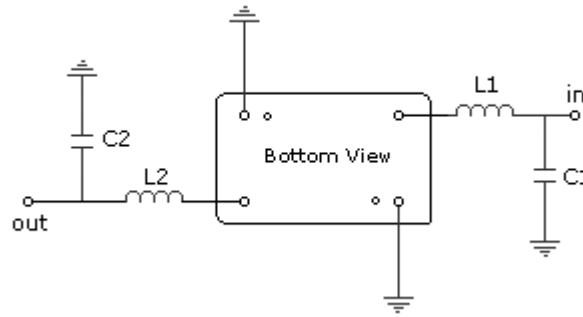
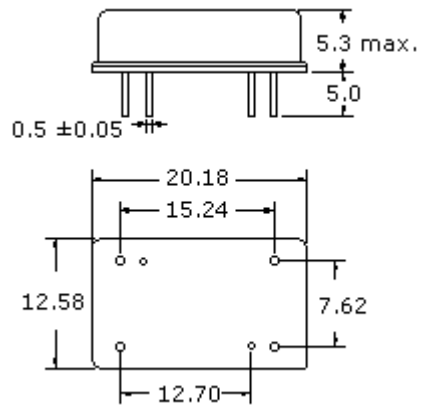
OPERATING CONDITIONS / ELECTRICAL CHARACTERISTICS

PARAMETERS	Minimum	Typical	Maximum	Units
Center Frequency	139.94	140.0	140.06	MHz
Insertion Loss	-	23.1	25.0	dB
1dB Bandwidth	3.8	3.93	-	MHz
3dB Bandwidth	4.1	4.24	-	MHz
40dB Bandwidth	-	5.7	5.9	MHz
Passband Ripple	-	0.5	0.7	dB
Group Delay Variation	-	60	100	nsec
Absolute Delay	-	1.62	-	µsec
Ultimate Rejection	50	55	-	dB
Substrate Material	-	Quartz	-	-
Ambient Temperature	-	25	-	°C
Phase Linearity	-	2.7	5.0	degc

* Custom SAW IF Filters available. Contact Oscilent for assistance.

PACKAGE OUTLINE (mm)

TEST FIXTURE



L1 = 100nH C1 = 43pF
 L2 = 90nH C2 = 56pF
 Source/Load Impedance = 50 ohms

Oscilent Corporation - CALL **949.252.0522**

17962 Sky Park Circle, Building D, Irvine, CA 92614, USA
 Fax: 949.252.0599, E-Mail: Sales@Oscilent.com

Part No.: 820-IF140.0M-A