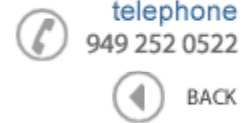


**Data Sheet**

Product Category: IF SAW Filter

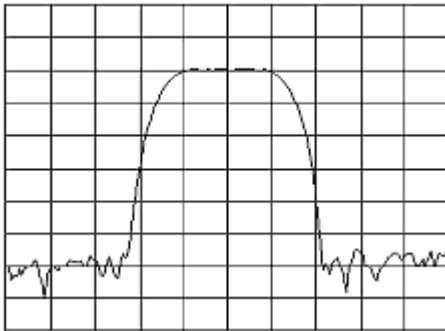
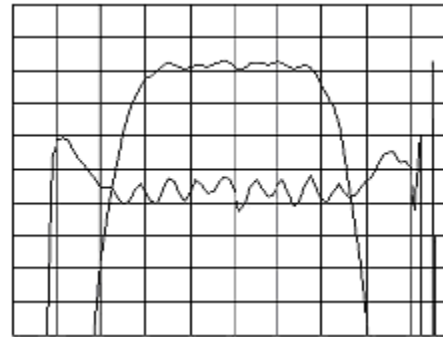
Part Number
820-IF114.99M-APackage
20.2 x 12.6 Thru HoleApplication
Base Station & RepeaterLast Modified
May 30 2003

TYPE :

114.99 MHz Bandpass Filter

1.8 MHz Bandwidth

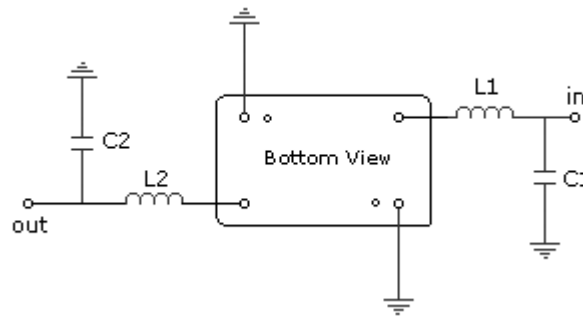
PART NUMBER :

820-IF114.99M-AHorizontal : 0.8 MHz/Div
Vertical : 10 dB/DivHorizontal : 0.4 MHz/Div
Vertical : 1 dB/Div
Vertical : 100 ns/Div**OPERATING CONDITIONS / ELECTRICAL CHARACTERISTICS**

| PARAMETERS | Minimum | Typical | Maximum | Units |
|------------------------------|---------|---------|---------|-------|
| Center Frequency | 114.95 | 114.99 | 115.03 | MHz |
| Insertion Loss | - | 20.0 | 23.0 | dB |
| 0.5dB Bandwidth | 1.4 | 1.6 | - | MHz |
| 3dB Bandwidth | 1.8 | 2.05 | - | MHz |
| 50dB Bandwidth | - | 3.44 | 3.8 | MHz |
| Passband Ripple | - | 0.3 | 0.5 | dB |
| Group Delay Variation | - | 100 | 200 | nsec |
| Absolute Delay | - | 1.9 | - | µsec |
| Ultimate Rejection | 50 | 55 | - | dB |
| Substrate Material | - | Qz | - | - |
| Ambient Temperature | - | 25 | - | °C |
| Phase Linearity | - | 2.5 | 7.0 | degc |

* Custom SAW IF Filters available. Contact Oscilent for assistance.

PACKAGE OUTLINE (mm)**TEST FIXTURE**



$L1 = 100\text{nH}$ $C1 = 56\text{pF}$
 $L2 = 86\text{nH}$ $C2 = 56\text{pF}$
 Source/Load Impedance = 50 ohms

Oscilent Corporation - CALL **949.252.0522**

17962 Sky Park Circle, Building D, Irvine, CA 92614, USA
 Fax: 949.252.0599, E-Mail: Sales@Oscilent.com

Part No.: 820-IF114.99M-A